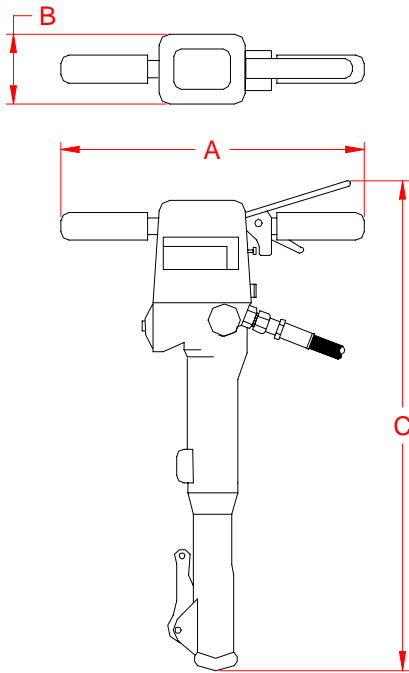


**08200
 TAMPER**

The Matweld Hydraulic Tamper is equipped with torsion dampened handles which reduce the vibration level to a minimum. An excellent multipurpose tool that can tamp, cut asphalt or break concrete.



FLOW	PRESSURE	DIMENSIONS	WEIGHT
5 gpm (19 lpm)	2000 psi (140 bar)	A - 18" (457mm) B - 5" (127mm) C - 30" (762mm)	31 lbs (14 kg)

ACCESSORIES:

- 01362 - TAMPER BIT
- 01365 - SPIKER BIT
- 01370 - ASPHALT CUTTER BIT
- 01375 - CONCRETE BREAKER

Prior to Operation

We thank you for choosing a Matweld breaker.

To ensure smooth operation and long-lasting performance of your new breaker, we recommend you study this operating manual carefully and pay special attention to the topics about:

Safety, Service Precautions and Operation

We hope you will be satisfied with your new Matweld breaker.

Best Regards
Matweld, Inc.

GENERAL SAFETY PRECAUTIONS:

TOOL OPERATORS AND MAINTENANCE PERSONNEL MUST ALWAYS COMPLY WITH THE SAFETY PRECAUTIONS GIVEN IN THIS MANUAL, AND WITH ALL STICKERS AND TAGS ATTACHED TO THE TOOL AND HOSE. ALL SAFETY PRECAUTIONS ARE GIVEN FOR YOUR SAFETY. READ TO UNDERSTAND AND FOLLOW ALL SAFETY, MAINTENANCE AND OPERATION INSTRUCTIONS BEFORE YOU USE OR MAINTAIN THE TOOL. REVIEW THE MANUAL DAILY BEFORE USING THE TOOL. IN ADDITION, FOLLOW ALL SAFETY GUIDELINES GIVEN YOU BY YOUR SUPERVISOR. DO NOT USE THE TOOL IF YOU HAVE ANY QUESTIONS ABOUT THE OPERATION, SAFETY OR MAINTENANCE OF THIS TOOL. FAILURE TO FOLLOW THESE INSTRUCTIONS CAN RESULT IN PERSONAL INJURY OR EQUIPMENT DAMAGE.

MATWELD HAS NO CONTROL OVER TOOL USE OR OPERATION ONCE IT LEAVES THE MATWELD PLANT. MATWELD HAS NO CONTROL OVER OPERATOR OR MAINTAINER SELECTION. THE CUSTOMER MUST ASSUME RESPONSIBILITY FOR THE TOOL'S SUITABILITY FOR A PARTICULAR FUNCTION, FOR ANYONE USING THE TOOL OR MAINTAINING THE TOOL REGARDING THEIR FITNESS TO USE THE TOOL OR REPAIR THE TOOL, UNDERSTANDING OF THE OPERATION AND SAFETY AND MAINTENANCE MANUAL, INTELLIGENCE TO USE GOOD JUDGMENT NECESSARY TO WORK SAFELY AND EFFICIENTLY WITHOUT ENDANGERING THEMSELVES OR BYSTANDERS IN THE WORK AREA.

- DO NOT OPERATE THE TOOL UNTIL YOU HAVE BEEN THOROUGHLY AND PROPERLY TRAINED OR UNDER THE SUPERVISION OF AN INSTRUCTOR.
- CHECK POWER SOURCE DAILY TO DETERMINE IF CORRECT FLOW AND PRESSURE ARE AVAILABLE. NEVER EXCEED FLOWS OR PRESSURES FOR THE TOOL BEING USED. PERSONAL INJURY OR DAMAGE TO THE TOOL CAN RESULT.
- OPERATORS MUST CLEAR THE WORK AREA OF NONESSENTIAL PERSONNEL. FLYING DEBRIS CAN CAUSE SERIOUS INJURY.
- THE OPERATOR MUST BE FAMILIAR WITH ALL PROHIBITED WORK AREAS SUCH AS UNSAFE GRADES, POOR FOOTING AREAS AND OVERHEAD HAZARDS.
- MAINTAIN BALANCE AND PROPER FOOTING AT ALL TIMES. NEVER OVERREACH TO THE EXTENT THAT A BROKEN PART OR SUDDEN MOVEMENT OF THE TOOL CAN CAUSE YOU TO LOSE YOUR BALANCE AND FALL, OR CAUSE INJURY TO YOUR SELF OR SOMEONE ELSE.

- WHEN WORKING NEAR ELECTRICAL CONDUCTORS, ALWAYS ASSUME THAT THE CONDUCTORS ARE ENERGIZED AND THAT HOSES AND CLOTHING CAN CONDUCT HARMFUL ELECTRICITY. USE HOSES LABELED AND CERTIFIED AS NONCONDUCTIVE.
- DO NOT OPERATE THE TOOL AT EXCESSIVE FLUID TEMPERATURES. OPERATOR DISCOMFORT AND POTENTIAL BURNS CAN RESULT AT HIGH OIL TEMPERATURES.
- NEVER WEAR LOOSE CLOTHING THAT CAN GET ENTANGLED IN THE WORKING PARTS OF THE TOOLS OR BE CARELESS WITH HANDS, FEET OR OTHER BODY PARTS AROUND THE WORKING PARTS OF THE TOOLS. HYDRAULIC TOOLS EXERT HIGH TORQUE AND FORCE AND CAN CAUSE SERIOUS INJURY OR DEATH IF IMPROPERLY USED.
- TO AVOID PERSONAL INJURY OR EQUIPMENT DAMAGE, ALL TOOL REPAIR, MAINTENANCE OR SERVICE MUST ONLY BE PERFORMED BY AUTHORIZED AND PROPERLY TRAINED PERSONNEL.
- ALWAYS WEAR SAFETY EQUIPMENT SUCH AS WORK GLOVES, SAFETY GLASSES, SAFETY BOOTS, EAR PROTECTION AND OTHER SAFETY APPAREL DICTATED BY YOUR SUPERVISOR APPLICABLE FOR THE JOB YOU ARE DOING AND THE TOOL YOU ARE USING.
- DO NOT CLEAN, INSPECT, OR REPAIR THE TOOL WHILE CONNECTED TO THE POWER SOURCE. ACCIDENTAL ENGAGEMENT OF THE TOOL CAN CAUSE SERIOUS PERSONAL INJURY.
- OIL INJECTION HAZARD EXISTS WITH THIS TOOL. OIL INJECTION IS A CONDITION WHERE HYDRAULIC OIL IS INJECTED UNDER THE SKIN FROM PRESSURE IN THE LINE. NEVER USE YOUR FINGERS TO CHECK FOR OIL LEAKS AND NEVER HOLD YOUR FACE CLOSE TO SUSPECTED LEAKS-USE A PIECE OF CARDBOARD INSTEAD. ALWAYS WEAR GLOVES AND REPAIR ANY LEAKS IMMEDIATELY. NEVER CARRY A TOOL BY THE HOSES.
- DO NOT USE DAMAGED EQUIPMENT. IMMEDIATELY REPLACE ANY DAMAGED HOSES, FITTINGS, OR OTHER COMPONENTS SHOWING WIRE BRAID, NICKS, CUTS, DAMAGE OR ABRASIONS. FAILURE TO DO SO MAY RESULT IN EQUIPMENT DAMAGE AND / OR PERSONAL INJURY OR DEATH.
- CLEAN UP ANY OIL OR FLUID SPILLS IMMEDIATELY.
- ONLY USE THE BREAKER IN ACCORDANCE WITH THE LOCAL WORKING REGULATIONS ON ALLOWED WORKING TIME. TIME BASED ON BREAKER VIBRATION LEVEL. WORKING WITH THE BREAKER LONGER THAN PRESCRIBED MAY DAMAGE THE OPERATOR.
- ALL MATWELD BREAKERS ARE SUPPLIED WITH SAFETY TRIGGER. (THE **SAFETY** TRIGGER MAY NOT BE DISMOUNTED.)

08200 TAMPER

SAFETY PRECAUTIONS:

1. **ALWAYS** WEAR PROTECTIVE EQUIPMENT SUCH AS GLOVES, SAFETY GLASSES, EAR PROTECTION AND SAFETY SHOES.
2. DO NOT WEAR CLOTHING WHICH MAY BECOME ENTANGLED IN THE TOOL.
3. **ALWAYS** KEEP WORK AREA FREE OF TOOLS OR ANY OTHER OBJECTS WHICH MAY IMPAIR SOUND FOOTING.
4. **CAUTION** OIL INJECTION HAZARD EXISTS WITH THIS TOOL. OIL INJECTION IS A CONDITION WHERE THE HYDRAULIC OIL IS FORCED UNDER THE SKIN THROUGH PRESSURE IN THE LINE. ALWAYS WEAR GLOVES, DO NOT CARRY THE TOOL BY HYDRAULIC HOSES, AND REPAIR LEAKS IMMEDIATELY.
5. **DO NOT** CARRY THE TOOL BY THE PIGTAIL HOSES.
6. **NEVER** ALLOW ANYONE OTHER THAN A PROPERLY TRAINED SERVICE REPRESENTATIVE TO SERVICE ACCUMULATOR. THE ACCUMULATOR IS UNDER HIGH PRESSURE, IMPROPER DISASSEMBLY CAN CAUSE SERIOUS INJURY OR DEATH. DO NOT USE THE TOOL OR HOOK TO A POWER SOURCE IF IT APPEARS THAT THE ACCUMULATOR HAS BEEN TAMPERED WITH. IMMEDIATELY RETURN THE TOOL TO MATWELD FOR INSPECTION AND SERVICE.
7. **ALWAYS** KEEP A FIRM GRASP ON THE TAMPER, WITH BOTH HANDS, AT ALL TIMES.
8. **DO NOT LEAN** ON THE TOOL WHILE IN OPERATION. THE FAILURE OF THE BIT OR ANY OTHER PART COULD CAUSE YOU TO LOSE YOUR BALANCE AND CAUSE SERIOUS INJURY.
9. **AVOID** FREE BLOWS (THE PISTON DOES NOT HIT THE TOOL), AS THIS WILL LEAD TO UNNECESSARY HEATING OF THE OIL AND IN THE LONG RUN DAMAGE BOTH SEALS AND THE TOOL.

08200 TAMPER

FLOW: 5 GPM (19 LPM)
PRESSURE: 2000 PSI (140 BAR) (MAX. PRESSURE RELIEF VALVE 2150 PSI (150 BAR))
BACK PRESSURE: 150 PSI (10 BAR) MAXIMUM
WEIGHT: 50 LBS. (22.7 kg)

OPERATION:

1. INSERT TOOL (MAKE SURE THE LATCH IS LOCKED SO THE BIT WILL NOT FALL OUT).
2. WITH THE POWER SOURCE IN THE "OFF" POSITION, CONNECT THE HOSES. DO NOT DRAG THE SERVICE HOSE BY PULLING WITH THE TOOL. LOOP THE SERVICE HOSE IN THE WORK AREA IN SUCH A WAY TO RELIEVE STRESS ON THE HOSE AND QUICK DISCONNECT FITTINGS WHILE WORKING. BE AWARE OF HOSE LOCATION AT ALL TIMES.
3. CONNECT THE TOOL TO THE POWER SOURCE.
4. TURN THE POWER SOURCE "ON" TO SUPPLY 5 GPM TO TOOL.
5. WITH THE BIT IN PLACE AND THE TOOL POSITIONED READY FOR WORK, RELEASE THE SAFETY TRIGGER AND PRESS THE TRIGGER LEVER DOWN TOWARDS HANDLE.
6. RELEASE THE TRIGGER WHEN THE TOOL IS BEING REPOSITIONED TO ANOTHER WORK AREA. THE SAFETY TRIGGER AUTOMATICALLY RE-LOCKS THE TRIGGER LEVER.
7. **DO NOT LEAN** ON THE TOOL. LET THE TOOL ACTION DO THE WORK.
8. **NEVER** OPERATE THE TOOL ON ANY HIGHER FLOW THAN 5 GPM. THE TOOL IS DESIGNED TO ACCEPT ONLY THE RECOMMENDED 5 GPM AND WILL MALFUNCTION AND OVERHEAT IF USED OTHERWISE.
9. TURN THE POWER SOURCE "**OFF**" BEFORE DISCONNECTING TOOL.

08200 TAMPER

REPAIR TROUBLESHOOTING:

1. TAMPER BIT NOT ALIGNED WITH HANDLE

- LOOSEN BOLTS ON LOWER HOUSING AND ROTATE HOUSING UNTIL BIT ALIGNS WITH HANDLES.
- RETORQUE BOLTS TO 45 FT. LBS.

2. TAMPER CYCLES OK BUT NO POWER

- ACCUMULATOR POSSIBLY LOW OR DISCHARGED OF NITROGEN. HAVE ACCUMULATOR CHECKED BY A PROPERLY TRAINED SERVICE REPRESENTATIVE.
- WORN HEX BUSHING OR TAMPER BIT WILL CAUSE LOSS OF POWER BECAUSE OF EXCESSIVE CLEARANCE BETWEEN STRIKING PISTON AND TOP OF TAMPER BIT. REPLACE WORN PART.
- **ACCUMULATOR CHARGING PRESSURE IS 730 PSI (50 BAR).**

3. BIT LATCH SPRINGS OPEN AND/OR BIT FALLS OUT

- REPLACE WORN TAMPER BIT.
- REPLACE LATCH AND ROLL PINS.
- IF THE SHAFT OF A NEW BIT CAN BE TURNED MORE THAN 20 DEGREES IN THE BUSHING, OR IF THE COLLAR IS CRACKED, THE BUSHING AND/OR NOSE CASTING MUST BE REPLACED.

4. TO MINIMIZE POSSIBILITY OF BIT BREAKAGE

- REPLACE BIT ANNUALLY
- BE AWARE THAT BIT IS MADE FROM A HARDENED HIGH IMPACT ALLOY, AND CARE SHOULD BE TAKEN TO STORE BITS PROPERLY. AVOID "THROWING" BITS AND/OR STRIKING BITS ON OTHER HARD SURFACES.
- OPERATE TAMPER ON PROPER FLOWS AND PRESSURES TO DECREASE UNDUE STRESS ON TOOL.
- DO NOT USE BIT FOR PRYING OR AS A LEVER. LET THE BIT WORK INTO THE AREA FROM THE TAMPER ACTION ONLY.
- SEVERAL BITS ARE AVAILABLE - USE ONLY THE ONE DESIGNED FOR THE APPLICATION.

08200 TAMPER

MAINTENANCE:

1. CHECK TOOL **DAILY** FOR PROPER OPERATION, LEAKS, OR DAMAGE.
2. INSPECT HOSES **DAILY**. REPLACE CUT, BURNED, OR OTHERWISE DAMAGED HOSES.
3. KEEP QUICK DISCONNECT COUPLERS **CLEAN AND LUBRICATED**.
4. USE HYDRAULIC FLUIDS THAT COMPLY WITH HTMA SPECIFICATION 5.7, THE HYDRAULIC FLUID SHOULD HAVE A VISCOSITY BETWEEN 100 AND 400 SSU (20-82 CENTISTOKES) AT THE MAXIMUM AND MINIMUM EXPECTED OPERATING TEMPERATURES. PETROLEUM BASED HYDRAULIC FLUIDS WITH ANTI-WEAR PROPERTIES AND A VISCOSITY INDEX OF OVER 140 WORK FOR A WIDE RANGE OF OPERATING CONDITIONS.

THE FOLLOWING OILS MEET HTMA SPECIFICATION 5.7:

AMOCO RYKON MV	CITGO A/W ALL TEMP
SUNVIS 706	MOBIL D.T.E. 13
CHEVRON EP-MV	TEXACO "RANDO" HDAZ

OTHER FLUIDS THAT MEET OR EXCEED THIS SPECIFICATION CAN BE USED.

*SEE **COLD WEATHER OPERATION** HYDRAULIC OIL NOTE.

5. HAVE TOOL INSPECTED, AT LEAST ANNUALLY, BY MATWELD OR A MATWELD QUALIFIED SERVICE REPRESENTATIVE TO DETERMINE IF TOOL IS IN NEED OF SAFETY CHANGES OR WORN PART REPLACEMENT.
6. CONTACT MATWELD ON A PERIODIC BASIS, AT LEAST ANNUALLY, FOR SERVICE BULLETINS, SAFETY NOTICES, OR OTHER IMPORTANT INFORMATION PERTAINING TO THIS TOOL.
7. CHECK THE OIL SUPPLY AND THE WORKING PRESSURE BY MEANS OF TEST EQUIPMENT. THE TEST EQUIPMENT SHOULD COMPRISE OF A PRESSURE GAUGE, A FLOW METER AND A VALVE DOE ADJUSTMENT OF THE FLOW.

MAKE SURE THAT:

- THE OIL SUPPLY IS NOT TOO HIGH
- THE WORKING PRESSURE IS NOT TOO HIGH
- THE RETURN PRESSURE IS NOT TOO HIGH
- THE PRESSURE RELIEF VALVE IS NOT SET HIGHER THAN 150 BAR
- THE INTERNAL DIAMETER OF THE HOSES IS SUFFICIENT (MIN. 1/2")

COLD WEATHER OPERATION

HYDRAULIC SYSTEM PERFORMANCE IS AFFECTED WHEN THE TEMPERATURE DROPS BELOW 50 F. THEREFORE MEASURE SHOULD BE TAKEN TO PRE-WARM TOOLS AND FLUIDS BEFORE OPERATING.

MATWELD, INC.

PHONE:(270) 444-0085

FAX:(270) 443-6180

Matweld reserves the right to change parts, features, or specifications without notice.

08200 TAMPER

OIL SUPPLY AND PRESSURE:

YOUR NEW MATWELD BREAKER IS DESIGNED FOR CERTAIN OIL SUPPLY, WORKING PRESSURE AND MAXIMUM PRESSURE. A TOO HIGH OIL SUPPLY AND/OR A TOO HIGH PRESSURE RESULTS IN OVERLOAD OF THE BREAKER, MEANING THAT THE LIFETIME OF YOUR NEW MATWELD BREAKER WILL NOT BE AS EXPECTED, AND THAT YOUR SERVICE AND REPAIR COST WILL BE TOO HIGH.

IT IS IMPORTANT TO CHECK THAT THE BREAKER IS NOT SUPPLIED WITH AN OIL FLOW BEYOND ITS DESIGN CAPACITY, THAT THE WORKING PRESSURE IS CORRECT AND THAT THE MAXIMUM ALLOWED PRESSURE IS NOT EXCEEDED.

VIBRATION LEVEL:

THERE ARE MANY EXAMINATIONS ABOUT THE RISK OF CONTRACTING THE SO-CALLED "WHITE FINGERS" DISEASE AS A CONSEQUENCE OF THE USE OF TOOLS WITH HIGH VIBRATION LEVEL. HAND-HELD ELECTRIC, PNEUMATIC AND HYDRAULIC BREAKERS BELONG TO THIS CATEGORY.

TO REDUCE THE RISK OF INJURY, A NUMBER OF GUIDELINES FOR MAXIMUM DAILY USE HAVE BEEN LAID DOWN. THE RISK IS MINIMIZED IF YOU KEEP THE TIMES OF MAXIMUM DAILY USE.

IT IS THEREFORE IMPORTANT TO MANUFACTURERS OF HAND HELD BREAKERS THAT THEY OFFER BREAKERS WITH A LOW VIBRATION LEVEL.

AT MATWELD, WE ATTACH GREAT IMPORTANCE TO THE PROTECTION OF OUR CUSTOMERS IN THE FORM OF A VERY LOW VIBRATION LEVEL.

THEREFORE, YOUR NEW MATWELD BREAKER IS EQUIPPED WITH A HANDLE DESIGNED FOR THE LOWEST POSSIBLE VIBRATION LEVEL, EVEN THOUGH THE BREAKER HAS HIGH PERFORMANCE. ON ALL MATWELD BREAKERS WE MOUNT OUR BEST VIBRATION-DAMPED HANDLE AS STANDARD TO PROTECT YOU AS USER.

IF YOU WISH TO OBTAIN FURTHER INFORMATION ABOUT THE GUIDELINES FOR MAXIMUM DAILY USE, PLEASE CONTACT US.

<u>BLOW FREQUENCY:</u> <i>1560 1/MIN.</i>	<u>VIBRATION LEVEL:</u> <i>133.6 dB (4.8M/S²)</i>	<u>SOUND PRESSURE</u>
<u>BLOW ENERGY:</u> <i>60 JOULE</i>		<u>LEVEL (Lpa) LM:</u> <i>94dB</i>
		<u>SOUND POWER LEVEL</u>
		<u>(LWA):</u> <i>105 dB</i>

REVIEW OF HYDRAULIC PRINCIPLES

A. TOOL CIRCUIT

1. HYDRAULIC FORMULAS:

$$\text{GPM} = \frac{\text{CID X RPM}}{231} \qquad \text{HP} = \frac{\text{GPM X PSI}}{1714 (.85)}$$

1456.9

Example: HP required to deliver 10 GPM at 1500 PSI.

$$\frac{10 \text{ GPM X } 1500 \text{ PSI}}{1456.9} = \frac{15000}{1456.9} = 10.3 \text{ HP}$$

(subtract back pressure for tool HP)

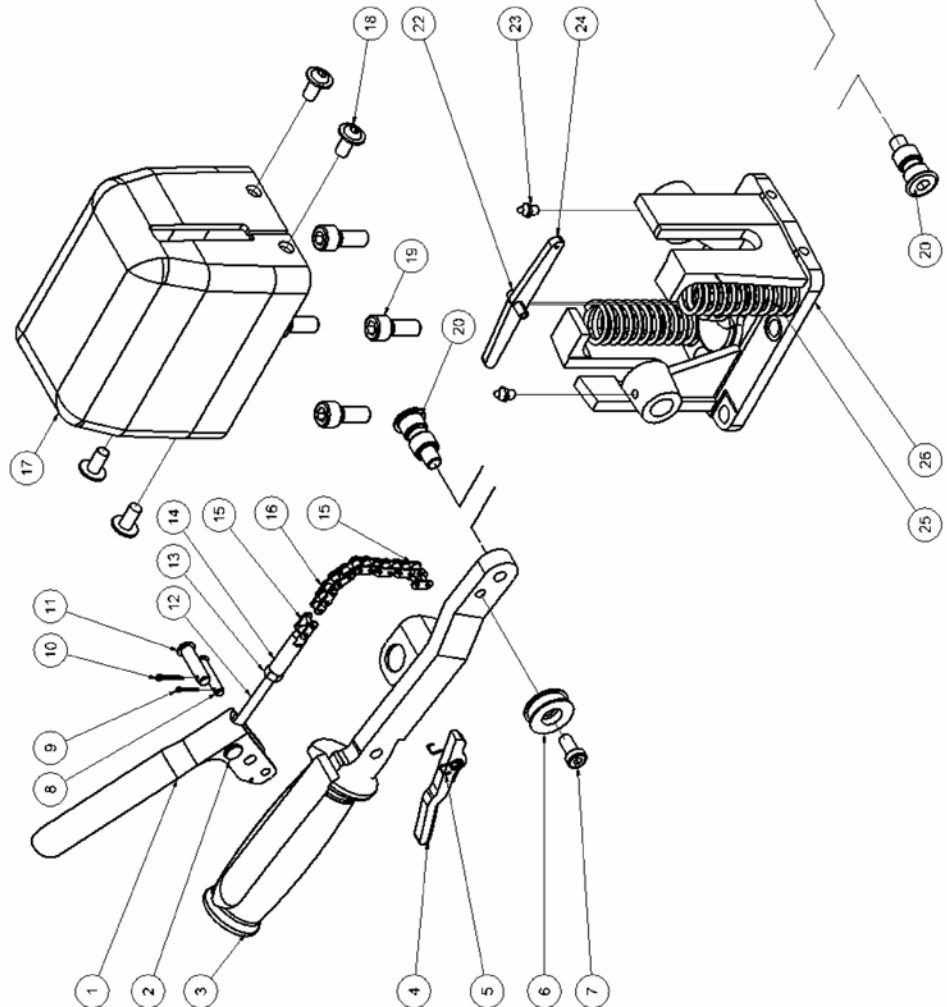
Estimated HP delivered by pump or used by tool.

GPM	PSI	500	1,000	1,500	2,000	2,500	3,000
3		1.03	2.06	3.09	4.12	5.15	6.18
5		1.72	3.43	5.15	6.86	8.58	10.30
10		3.43	6.86	10.3	13.70	17.20	20.60
15		5.15	10.30	15.40	20.60	25.70	30.90

2. BACK PRESSURE

BACK PRESSURE MEASURED AT THE TOOL RETURN PORT MUST NOT EXCEED THE MANUFACTURERS BACK PRESSURE RATING. MOST MANUFACTURERS LIST THE MAXIMUM BACK PRESSURE FOR THEIR HYDRAULIC TOOLS AT 250 PSI. BACK PRESSURE MEASURED ON THE RETURN SIDE OF THE TOOL IS THE FORCE REQUIRED TO GET THE OIL BACK TO THE TANK. IN ALMOST ALL CASES THE LOWER THE BACK PRESSURE THE BETTER THE TOOL PERFORMANCE. FIRST, THE BACK PRESSURE IS SUBTRACTED FROM THE MAXIMUM TOOL PRESSURE TO ARRIVE AT A MAXIMUM TOOL OPERATING PRESSURE. FOR EXAMPLE, TOOLS WITH 2000 PSI OPERATING PRESSURE ARE INSTALLED ON A SYSTEM WITH 250 PSI BACK PRESSURE. THIS LEAVES 1750 PSI AS A MAXIMUM TOOL PRESSURE. IMAGINE A SYSTEM WITH 500 PSI BACK PRESSURE. 2000 MINUS 500 PSI BACK PRESSURE LEAVES ONLY 1500 PSI FOR THE TOOL. SECOND, TOOLS ARE DESIGNED FOR PRESSURE TO BUILD ON THE PRESSURE SIDE OF THE TOOL. IF TOO MUCH PRESSURE BUILDS ON THE RETURN SIDE, NOT ONLY IS PERFORMANCE EFFECTED, BUT SEALS MAY BLOW. THIS IS WHY IT IS VERY IMPORTANT TO DIRECT THE FLOW INTO THE TOOL CORRECTLY. REVERSING THE HOSES TO TEST MAY RESULT IN BLOWN SEALS, DAMAGE TO THE TOOL, AND PERSONAL INJURY.

Pos.	Part No.	Description	Pcs.
1	8211270	Trigger lever	1
2	8211271	Cross pin	1
3	8711275	Handle (trigger side)	1
4	8211273	Safety trigger	1
5	8611291	Spring	1
6	8211276	Chain spool	1
7	7611290	Screw M8x16	1
8	8612137	Pin ø6x27	1
9	7612139	Split pin ø1.6x10	1
10	7612138	Split pin ø2.0x12	1
11	8612136	Pin ø8x27	1
12	7611277	Screw M6x80	1
13	7611278	Nut M6	1
14	8211279	Adaptor	1
15	7611280	Joint	2
16	9011662	Chain	1
17	8711359	Top cover black w/o logo	1
18	7611282	Screw M8x16	4
19	7611283	Screw M10x25	4
20	8211260	Shaft for handle	2
22	7611284	Roll pin 6x20	1
23	7611285	Grease nipple M6	2
24	8211286	Boom	1
25	8611406	Compression spring	2
26	8211209	Housing	1
27	8711287	Handle	1
-	9011595	Handle complete <i>Incl. all positions except 17, 18 and 19</i>	1



MATWELD, INC.

PHONE:(270) 444-0085

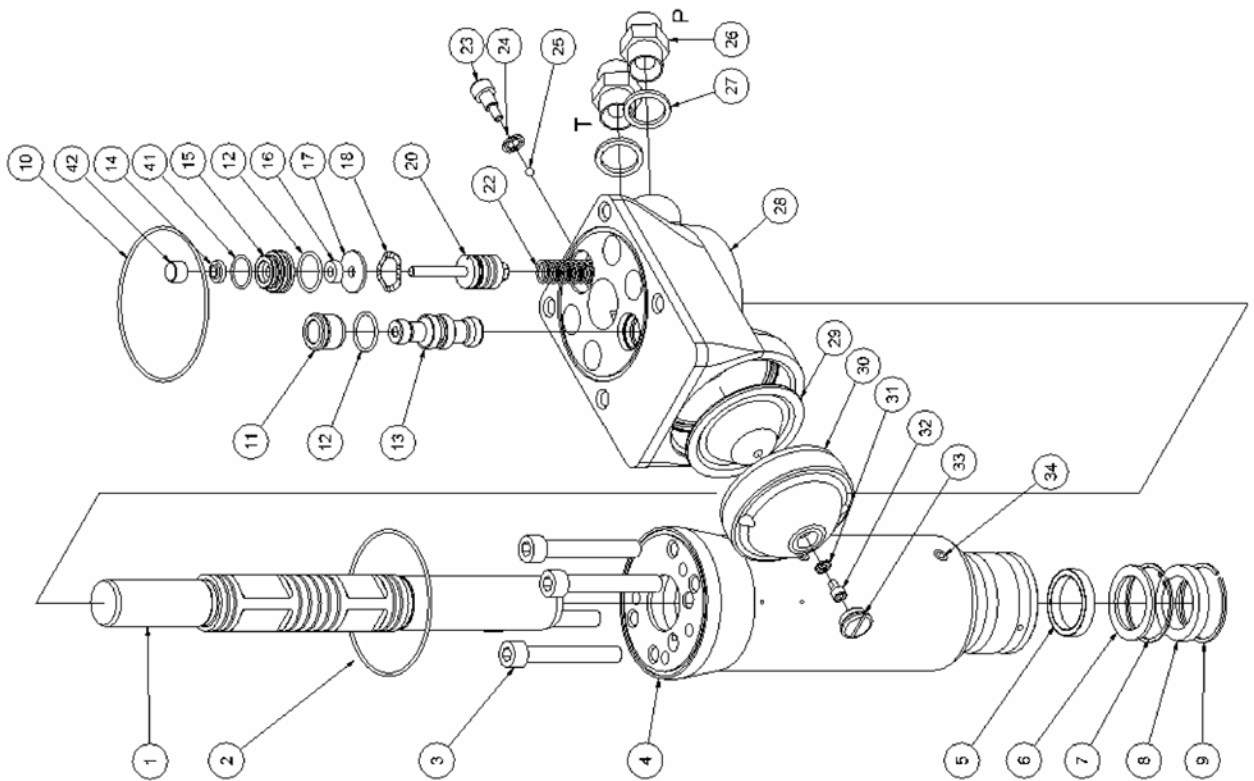
FAX:(270) 443-6180

Matweld reserves the right to change parts, features, or specifications without notice.

08200 TAMPER

Pos.	Part No.	Description	Pcs.
-	4141358	1/2" tailhose-set 0.3 m	1
-	7401141	Q.R. coupling 1/2" BSP male	1
-	7401142	Q.R. coupling 1/2" BSP female	1
1	8211213	Striking piston	1
* 2	7511247	O-ring 82x2	1
3	7611244	Screw M10x70	4
4	9011375	Cylinder	1
* 5	7511231	Seal ø28/ø36x5.7	1
* 6	8211257	Supporting washer 28.7x38x2.0	1
* 7	7611258	Retaining ring	1
* 8	7511233	Rod wiper	1
* 9	7611259	Spring ring	1
* 10	7511246	O-ring 88x2	1
11	8211228	Sleeve	1
* 12	7511248	O-ring 20x2	2
13	8211746	Spool HH20	1
* 14	7521013	Seal	1
15	8211226	Seal housing	1
* 16	7521014	Seal	1
17	8211251	Washer	1
18	7611252	Crinkled spring washer 23.8x17.3x0.3	1
20	9011750	Trigger piston complete	1
22	8611249	Compression spring 1.25x12.5x62.5	1
23	8611255	Screw M8 f/lock nut	1
* 24	7511254	Seal ring M8	1
25	7611253	Ball ø5 mm	1
26	7421063	Fitting 1/2"x1/2" BSP <i>Only for tail-hoses with female thread</i>	2
26	7421343	Fitting 1/2"x3/4" JIC <i>Only for tail-hoses with female thread</i>	2
* 27	7521072	Seal ring 1/2"	2
28	8211202	Valve housing	1
29	7711091	Diaphragm	1
30	8211216	Accumulator cover	1
* 31	7511268	Seal ring M5	1
32	8611269	Screw M5 f/accumulator	1
33	8211256	Plug	1
34	7621037	Pipe plug 1/8"	4
* 41	7511300	O-ring 17x1.5	1
* 42	8211227	Distance piece	1

* Items sold in 9011378 seal kit only



MATWELD, INC.

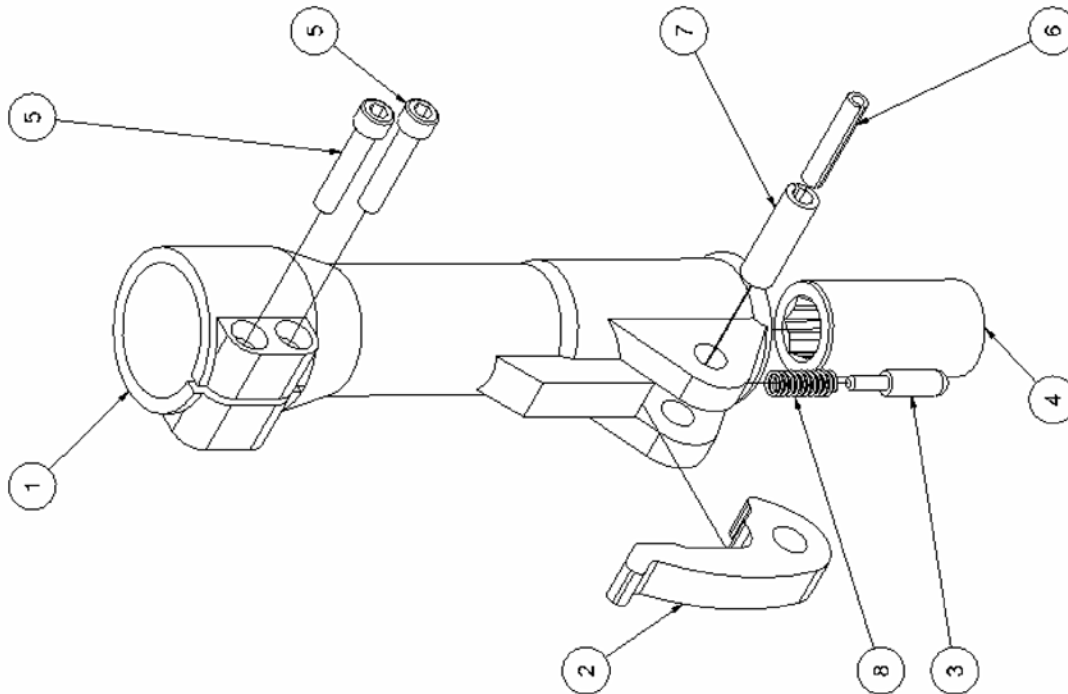
PHONE:(270) 444-0085

FAX:(270) 443-6180

Matweld reserves the right to change parts, features, or specifications without notice.

08200 TAMPER

Pos.	Part No.	Description	Pcs.
1	8211205	Nose part Hex 25	1
1	8211207	Nose part Hex 28/32	1
2	8211220	Latch	1
3	8211221	Pin	1
4	8211217	Chisel bushing Hex 25x108	1
4	8211218	Chisel bushing Hex 32x152	1
4	8211619	Chisel bushing Hex 28x160	1
4	8211219	Chisel bushing Hex 32x160	1
5	7611238	Screw M10x50	2
6	7611239	Roll pin ϕ 10x50 Nose part Hex 25x108	1
6	7611242	Roll pin ϕ 10x60 Nose part Hex 32x152/Hex 28x160/Hex 32x160	1
7	7611240	Roll pin ϕ 16x50 Nose part Hex 25x108	1
7	7611241	Roll pin ϕ 16x60 Nose part Hex 32x152/Hex 28x160/Hex 32x160	1
8	8611222	Compression spring 2x10x38.5	1
-	1111235	Nose part complete Hex 25x108	1
-	1111236	Nose part complete Hex 32x152	1
-	1111620	Nose part complete Hex 28x160	1
-	1111237	Nose part complete Hex 32x160	1



MATWELD, INC.

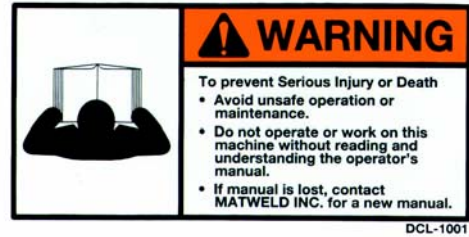
PHONE:(270) 444-0085

FAX:(270) 443-6180

Matweld reserves the right to change parts, features, or specifications without notice.

08200 TIE TAMPER

DECAL LEGEND:



LIMITED WARRANTY

MATWELD, INC., PADUCAH, KY., WARRANTS TO THE ORIGINAL PURCHASER OF THIS PRODUCT THAT THE PRODUCT WILL BE FREE FROM DEFECTS IN MATERIAL AND WORKMANSHIP FOR THE PERIOD OF ONE (1) YEAR AFTER THE DELIVERY OF SUCH PRODUCT TO THE CUSTOMER. OTHER EQUIPMENT AND PARTS USED, BUT NOT MANUFACTURED BY MATWELD INC. ARE COVERED DIRECTLY BY THE WARRANTY OF THE MANUFACTURER OF THOSE PRODUCTS. PROOF OF PURCHASE MUST BE DOCUMENTED INCLUDING REFERENCE TO A SERIAL NUMBER LOCATED ON EACH TOOL. THE PURCHASER'S ONLY REMEDIES UNDER THIS LIMITED WARRANTY SHALL BE LIMITED AT MATWELD'S SOLE OPTION TO THE FOLLOWING: REPAIR, REPLACEMENT OR REFUND OF THE PURCHASE PRICE OF THE DEFECTIVE PRODUCTS. EACH OF THESE REMEDIES REQUIRES TIMELY NOTIFICATION OF THE DEFECT IN THE PRODUCT AND SUBSTANTIATION THAT THE PRODUCT HAS BEEN PROPERLY STORED, MAINTAINED AND USED. MATWELD'S OBLIGATIONS HEREUNDER EXTEND ONLY TO THE PURCHASER OF THE PRODUCT AND NOT TO ANY THIRD PARTY.

AS A CONDITION PRECEDENT TO MATWELD'S OBLIGATION HEREUNDER, THE DEFECTIVE PRODUCT MUST NOT HAVE BEEN ALTERED OR MODIFIED WITHOUT THE EXPRESS WRITTEN APPROVAL OF MATWELD, INC. THE PRODUCT MUST NOT HAVE BEEN SUBJECTED TO DELIBERATE DAMAGE, SHIPPING DAMAGE, NEGLIGENCE, TAMPERING BY UNAUTHORIZED PERSONNEL OR DAMAGE BY IMPROPER USE, STORAGE OR MAINTENANCE. SERIAL NUMBERS MUST NOT HAVE BEEN ALTERED, DEFACED OR REMOVED. SUCH ACTION VOIDS LIMITED WARRANTY.

EXCLUSIONS TO LIMITED WARRANTY

THIS LIMITED WARRANTY IS EXCLUSIVE AND IS IN LIEU OF ANY OTHER WARRANTY, WRITTEN OR ORAL, EXPRESSED OR IMPLIED, INCLUDING, WITHOUT LIMITATION, ANY IMPLIED WARRANTY OR MERCHANTABILITY OR FITNESS FOR A PARTICULAR PURPOSE.

LIMITED WARRANTY DOES NOT COVER NORMAL WEAR AND TEAR ITEMS SUCH AS FILTERS, HOSES, COUPLERS, BITS, SOCKETTS, AUGERS, AND BATTERIES.

LIMITATION OF LIABILITY

EXCEPT AS PROVIDED ABOVE, MATWELD SHALL IN NO EVENT BE LIABLE OR RESPONSIBLE FOR ANY INJURY, LOSS OR DAMAGE, DIRECT, INCIDENTAL OR CONSEQUENTIAL, ARISING OUT OF THE USE OR MISUSE OR INABILITY TO USE THE PRODUCT, HOWEVER CAUSED AND ON ANY THEORY OF LIABILITY INCLUDING, WITHOUT LIMITATIONS, BREACH OF CONTRACT, TORT, (INCLUDING NEGLIGENCE OR STREET LIABILITY) AND NOT WITHSTANDING ANY FAILURE OF ANY REMEDY HEREIN OF ITS ESSENTIAL PURPOSE, EVEN IF MATWELD WAS AWARE OF THIS POSSIBILITY OF SUCH DAMAGE. MATWELD'S LIMITED WARRANTY AS SET FORTH ABOVE SHALL NOT BE ENLARGED, DIMINISHED OR AFFECTED BY, AND NO OBLIGATION OR LIABILITY SHALL ARISE OR GO OUT OF THE RENDERING OF TECHNICAL ADVICE OR SERVICE BY MATWELD OR ITS AGENTS. THE FOREGOING MAY NOT BE CHANGED EXCEPT BY WRITTEN AGREEMENT SIGNED BY AN AUTHORIZED OFFICER OF MATWELD, THE REMEDIES SET FORTH HEREIN ARE EXCLUSIVE.

MATWELD, INC.

PHONE:(270) 444-0085

FAX:(270) 443-6180

Matweld reserves the right to change parts, features, or specifications without notice.

IMPORTANT SAFETY MESSAGE

**PLEASE OBEY
IT'S THE LAW!**

YOU MUST WEAR EYE PROTECTION. ALL HAMMER OPERATIONS REQUIRE EYE PROTECTION FOR BOTH THE USER OF THE TOOL, AND BY OTHERS WHO MAY BE EXPOSED TO THE FLYING PARTICLES. THE OCCUPATIONAL SAFETY AND HEALTH ADMINISTRATION (OSHA) IS CHARGED TO ENFORCE THE MANDATED CODE OF FEDERAL REGULATIONS GOVERNING THE USE OF EYE PROTECTION DURING HAMMERING OPERATIONS.

1. NEVER USE A MODIFIED, DAMAGED, WELDED, ABUSED, OR WORN HAMMER ACCESSORY TOOL.
2. USE ACCESSORY TOOL **ONLY** WITH THE HYDRAULIC TOOL IT IS DESIGNED FOR.
3. NEVER STRIKE ACCESSORY WITH ANY HAND HELD INSTRUMENT AND BE CAREFUL DURING TRANSPORT AND MOVEMENT NOT TO STRIKE THE TOOL AGAINST ANOTHER HARDENED SURFACE.
4. MAKE SURE THAT THE ACCESSORY IS PROPERLY SECURED WITH THE DESIGNED RETAINER. THE RETAINER SHOULD NEVER BE USED IF IT IS DAMAGED OR WORN.
5. DO NOT COME IN PHYSICAL CONTACT WITH THE WORKING END OF AN ACCESSORY DURING OPERATION OF THE HAMMER. ALWAYS WEAR SAFETY BOOTS AND APPAREL DURING HAMMERING OPERATIONS.
6. INSPECT SHANKS AND ADAPTERS DAILY AND REPLACE IF ANY INDICATIONS OF FATIGUE OR WEAR ARE FOUND.
7. NEVER LEAN ON TOOL OR USE IT FOR PRYING.

**ALL OF THE ABOVE
SHOULD BE REVIEWED
WITH AND UNDERSTOOD
BY THE END USER OF
THIS PRODUCT!**

08200 TIE TAMPER

GENERAL NOTES:

MATWELD, INC.

PHONE:(270) 444-0085

FAX:(270) 443-6180

Matweld reserves the right to change parts, features, or specifications without notice.

08200 TIE TAMPER

GENERAL NOTES:

MATWELD, INC.

PHONE:(270) 444-0085

FAX:(270) 443-6180

Matweld reserves the right to change parts, features, or specifications without notice.

CUSTOMER INFORMATION:

Name _____

Company _____

Serial # of your Matweld tool _____

(Upon receiving your Matweld tool, make sure to list serial number above so that a good record is kept for order information.)

MATWELD HYDRAULIC TOOL LIST

All Matweld Hydraulic Tools operate at 5 or 10 GPM @ 2000 PSI

POWER UNITS:

00100K – GASOLINE POWERED (1) 10 GPM OR (2) 5 GPM CIRCUITS

02900A – DIESEL (1) 10 GPM OR (2) 5 GPM CIRCUITS

(OPTIONAL CATALYTIC EXHAUST AND/OR MSHA CERTIFIED)

05500 – TWIN POWER DUAL CIRCUIT (1) 10 GPM OR (2) 5 GPM CIRCUITS & 5000 WATT GENERATOR

02050K – GASOLINE POWERED (1) 5 GPM

03700A – ELECTRIC POWER (1) 10 GPM OR (2) 5 GPM CIRCUITS

GRINDERS:

09200A – PRECISION FROG GRINDER

06000 – PROFILE GRINDER

06900 & 06900A – MULTI-PURPOSE GRINDER (TRIGGER VERSION AVAILABLE)

05900 – FROG/PROFILE GRINDER (TRIGGER VERSION AVAILABLE)

00700 – RAIL SURFACING GUIDE

04600 – STRAIGHT STONE CW ROTATION (TRIGGER VERSION AVAILABLE)

04700 – STRAIGHT STONE CCW ROTATION (TRIGGER VERSION AVAILABLE)

07500 – CHAMFER TOOL

04800 – CUP STONE GRINDER (TRIGGER VERSION AVAILABLE)

00600C – CUP STONE GRINDER

05400 – ANGLE GRINDER

05600 – BULL NOSE GRINDER

02400 – 10" OR 14" FROG AND SWITCH GRINDER

TRACK TOOLS:

03900A – REVERSING RAIL SAW

05100A & 05100B – POWER WELD SHEAR

03500 – SELF FEED RAIL DRILL

01600A – 5 GPM 1" IMPACT WRENCH

04500D – 1/2" HYDRAULIC DRILL IMPACT WRENCH

08200 – TAMPER

02800 – 60 TON BRIDGE SPREADER

01200 – SPRING ANCHOR APPLICATOR

01100A – SPIKE PULLER (SINGLE, 2 STAGE & TRIGGER VERSIONS AVAILABLE)

00800A – 16" RAIL SAW

05000 – HAND PUMP WELD SHEAR

01500 – RAIL DRILL

02500 – 10 GPM 1" IMPACT WRENCH

03100C – RAIL PULLER

08300 – SPIKE DRIVER

07650 – HYDRAULIC CLIP TOOL

OTHER PRODUCTS:

HYDRAULIC MANIFOLDS

HYDRAULIC TEST GAUGES

HOSE REELS

HYDRAULIC HOSES

ACCESSORIES

MATWELD, INC.

PHONE:(270) 444-0085

FAX:(270) 443-6180

Matweld reserves the right to change parts, features, or specifications without notice.