

THE AMAZING
**MIDAS
TOUCH**

• FAST & EASY •



THE FAST AND EASY WAY
TO FIND BIG WINNERS
ALL DAY LONG



A lightning-fast method for knowing when to buy, what to buy and when to sell...

No Time? Not Making Money? Too complicated?

Your investment problems are *history!*

Introducing the Midas Touch. The one thing all investors have been waiting for—a *fast, easy* system for spotting big winners in all market conditions. VectorVest's exclusive Midas Touch System manages the impossible by taking away the frustrations of do-it-yourself investing by *doing all the hard work for you.*

This amazing cherry-picking technique gives you the ability to instantaneously find the stocks that are already doing what you want them to do—making money for investors. These stocks are in strong uptrends and have the stamina and persistence to *keep* rising in price.

Investors have been discovering winner after winner using this precision system that shows exactly what to buy, when to buy and when to sell. And now it's your turn. With the Midas Touch, you'll be able to consistently buy low and sell high, increase your winning trades and control your investment risks, all while managing your portfolio in as little as 5 minutes a night. In this report, you'll find the three simple steps that will give your bank account the "Midas Touch."

1 When to Buy. It all starts with market timing. Market timing is the most important information an investor can have. And you'll find it right on the VectorVest Home tab.

FIGURE 1. VECTORVEST'S MARKET TIMING GAUGE SHOWS YOU WHEN TO BUY



Just log in to check the status of the Market Timing Gauge on the Home screen.

If the gauge needle is in the red, VectorVest will let you know that now is not the best time to buy stocks.

If the gauge needle is in the green, it tells you that it's okay to buy, and you can move to step 2.

2 What to Buy. It's time to let the Midas Touch WatchList point you directly to the best stocks in the strongest uptrends. VectorVest ranks all stocks passing the 'Midas Touch' test by VST (value, safety & timing) to ensure they are the cream of the crop. You can view the *complete* listing of all the stocks meeting the Midas Touch requirements by following the steps below (Figure 2). It's effortless investing at its finest!

Accessing the complete list of Midas Touch stocks:

1. Click the Viewers tab at the top of your screen.
2. Select the 'Cherry-Picking' Group in the 'WatchList' section.
3. Click on the 'Midas Touch' WatchList to display the stocks.

FIGURE 2. ACCESSING THE MIDAS TOUCH WATCHLIST FROM 'VIEWERS'

The screenshot shows the VectorVest 7 US - RealTime software interface. The 'Viewers' tab is selected at the top, indicated by a yellow '1'. In the left sidebar, the 'WatchLists' section is expanded, and the 'Midas Touch' watchlist is selected, indicated by a yellow '2'. The main window displays a table of stocks sorted by VST (Value, Safety & Timing) in descending order. The table includes columns for Company, Symbol, Exch., Price, \$ Change, %PRC, Value, RV, RS, RT, VST, REC, and Stop. The date 9/5/2013 is shown at the top of the table.

Company	Symbol	Exch.	Price	\$ Change	%PRC	Value	RV	RS	RT	VST	REC	Stop
SouFun Hlds	SFUN	xN	50.91	+0.84	+1.68	55.37	1.41	0.94	1.93	1.51	B	37.41
E-House China	EJ	xN	7.86	-0.07	-0.88	7.87	1.35	0.86	1.94	1.49	B	5.79
Bitauto Hldg	BITA	xN	15.52	+1.58	+11.33	23.53	1.57	0.99	1.70	1.46	B	13.33
Emerge Energy	EMES	N	31.86	+0.85	+2.74	44.16	1.45	0.88	1.82	1.46	B	26.13
Skechers USA	SKX	xN	31.27	+0.26	+0.84	29.82	1.46	1.04	1.71	1.44	B	27.65
Charles&Colvard	CTHR	xO	7.02	+0.35	+5.25	5.44	1.37	0.95	1.79	1.43	B	5.93
iGate Corp	IGTE	xO	23.62	+0.32	+1.37	31.12	1.42	0.96	1.74	1.43	B	20.79
Qihoo 360	QIHU	xN	84.20	+2.41	+2.95	37.93	1.05	1.12	1.86	1.43	B	65.98
Tree.Com Inc	TREE	O	25.27	+0.42	+1.69	27.61	1.57	0.95	1.65	1.43	B	21.34
NQ Mobile inc	NQ	xN	17.27	+0.70	+4.22	22.35	1.40	0.95	1.73	1.42	B	14.14
Nationstar Mort	NSM	xN	52.44	+0.29	+0.56	85.52	1.62	0.88	1.63	1.42	B	46.04
Fed. Signal	FSS	xN	12.32	+0.32	+2.67	16.65	1.43	1.00	1.68	1.41	B	10.48

To refine your selections, take a look at the graphs. To launch the graph window, right click on any stock (or group of stocks) that you have selected and then click 'View Stock Graph.'

Once you have the graph window open, you'll want to change your layout to the 'Midas Touch.'

Selecting the Midas Touch graph layout:

1. Click 'Graph Layouts.'
2. Select 'Midas Touch.'
3. Use the shortcut buttons along the bottom of the graph to limit your viewing period to 3 months.

FIGURE 3. MIDAS TOUCH GRAPHS—A MIDAS TOUCH SUCCESS



With the exception of price, all the indicators shown on the graph need to be hitting new highs to be "Midas Touch" approved. Because every stock in the Midas Touch WatchList will already meet these requirements, the only thing left is the fun task of choosing which ones are your personal favorites. In the example above, Skyworks Solutions, Inc., meets the 'Midas Touch' test but VipShop, shown on the following page, does not (Figures 3 and 4 respectively).

FIGURE 4. STOCK FAILS THE MIDAS TOUCH TEST



As you can see using the crosshair cursor, the moving average of relative timing (displayed along the bottom of the graph), is not hitting a new three month high. Therefore, VIPS fails the Midas Touch test.

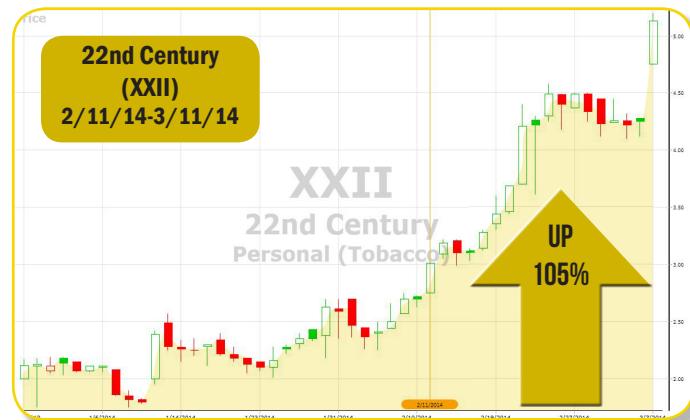
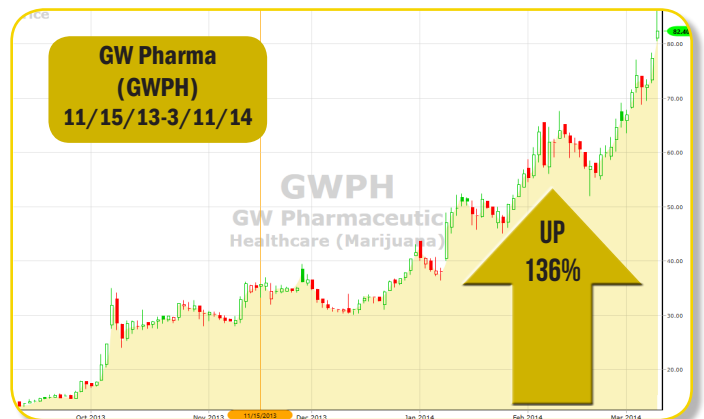
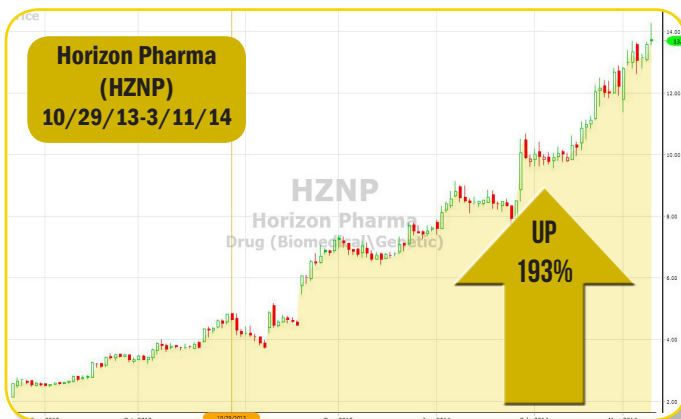
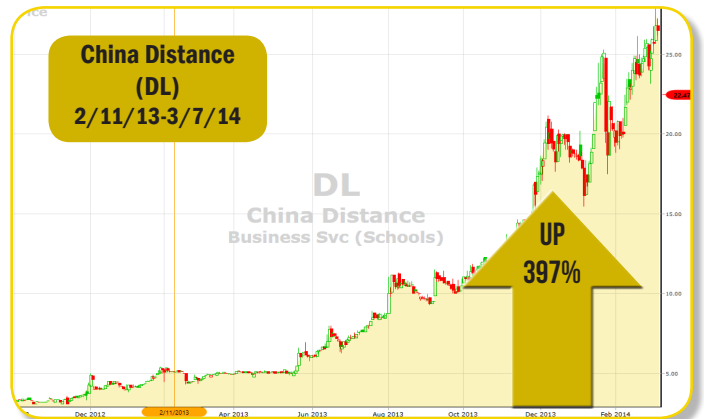
3 **When to Sell.** VectorVest believes you should always have a stop-loss in place to protect your capital and your profits. Almost any standard gain/loss or trailing stop works well with the Midas Touch, but one strong suggestion is to close your position when the stock price meets the 10-day moving average of the stop-price. (Figure 5)

FIGURE 5. SELLING USING THE 10-DAY STOP-PRICE MOVING AVERAGE



That's all there is to it! In just 3 steps, VectorVest gives you a system so fast and easy, you'll be able to find winners—BIG winners—all day long *in only a few seconds*. Try it for yourself! You won't believe how fast the "Midas Touch" starts transforming your portfolio. Take a look at the next page for just a few incredible Midas Touch Winners.

The "Midas Touch" System that Cherry-Picks Winner After Winner!



It's easy to see why VectorVest calls this system "The Midas Touch." Whether you're a short-term trader or a long-term investor, there's simply no faster, easier way to cherry-pick big winners than with VectorVest's Midas Touch. Get started today and prepare to be amazed!

Only VectorVest has it. Only VectorVest does it.

"I never pick a stock without it...
I use the Cherry Picking with the Midas Touch
method to select 100% of the shares I buy."

~Dr. Bart DiLiddo on the Midas Touch

More on the Midas Touch

Dr. Bart DiLiddo, VectorVest Founder, demonstrates how fast and easy it is to start finding winners with the Midas Touch. Don't miss this fantastic presentation.

Click or visit www.vectorvest.com/BetterWay.

If you would like more information on the Midas Touch, there are a wealth of essays available in the VectorVest Views, as well as Strategy of the Week Videos that can be viewed at www.VectorVest.com/VVUniversity.

- 12/31/09 The Midas Touch (Introduction)
- 05/07/10 Go for the Gold
- 10/01/10 Is the Price of Gold too High?
- 03/04/11 Hi Ho Silver
- 04/15/11 The Midas Method
- 04/21/11 Long-term Winners
- 04/29/11 Cherry Picking Using the Midas Method
- 08/19/11 Panning for Gold Stocks
- 04/20/12 When to Buy Gold
- 08/31/12 The Midas Touch (Update)
- 03/28/13 COLT 45: Cherry Picking with the Midas Touch
- 04/19/13 Why I Love the Midas Touch
- 05/10/13 COLT 45: Automated
- 06/28/13 When to Buy Gold Stocks
- 08/30/13 Midas Touch ETFs
- 09/06/13 Cherry Picking with the Midas Touch
- 09/20/13 Making Money with the Midas Touch
- 02/14/14 Midas Touch Update
- 03/07/14 Picking Derby Winners with the Midas Touch