

AUSTRALIAN INTERSTATE QUARANTINE



A TRAVELLER'S GUIDE

Quarantine Domestic

CHECK WHAT YOU'RE CARRYING. PENALTIES APPLY.

ENJOY YOUR TRIP AND LOOK AFTER AUSTRALIA



Help us protect our agricultural industries and environment from pests and diseases.

Use this simple guide before you travel and keep it with you. It will help you check what you can and can't take across state and quarantine borders and avoid on-the-spot fines.



CONTENTS

State and quarantine borders	3
Key	3
NSW (including ACT)	4
Northern Territory	6
Queensland	8
South Australia	10
Tasmania	12
Victoria	14
Western Australia	16
Some of the major threats	18
Further information	19

December 2013

PLEASE NOTE:

This document is a guide only for private interstate travellers.

Commercial importers and exporters must consult with state authorities for full information.

STAY UP TO DATE:

Quarantine requirements may change as new pests, diseases and weeds are detected.

For the most up to date information, visit the Quarantine Domestic website www.quarantinedomestic.gov.au or telephone 1800 084 881 during business hours Mon-Fri. This QR code can be used to access the website.





AUSTRALIA'S DOMESTIC QUARANTINE RULES

Pests, diseases and weeds can travel with you as you visit different areas of Australia. There are restrictions on what you can take as you cross state and quarantine borders within Australia. Travellers face on-the-spot fines for taking prohibited items across borders.

Check before you travel

It's always good to check any restrictions that might apply to your trip. You can also check restrictions online at quarantinedomestic.gov.au or by ringing Freecall 1800 084 881 (business hours Mon-Fri)

Eat it or bin it

If you reach a border with produce that can't be taken across, eat it or bin it. There are interstate quarantine bins at domestic airports, ferry terminals and state and quarantine zone borders. You must dispose of any restricted products at that point. That way you can be sure you're not giving a pest or disease a free ride into new areas.

The risks

Pests, diseases and weeds can be spread from one part of Australia to another through the movement of:

- plant or plant products
- fruit and vegetables
- animals or animal products
- soil
- agricultural machinery and other equipment
- recreational equipment.

Following the rules about moving these items will help to minimise the risk to Australia's unique environments and valuable agricultural markets.

AUSTRALIAN STATE BORDERS



KEY TO THE TABLES



NO ✘

You **cannot** carry this item with you when travelling to this state or territory.



ASK ⚠

You **need** to obtain an appropriate permit or certificate or provide more information to carry this item with you when travelling to this state or territory. Please contact the relevant authority indicated for the destination state or territory.



YES ✓

You **can** carry this item with you without restriction when travelling to this state or territory.

Please see www.quarantinedomestic.gov.au for a detailed map of Australian quarantine borders.

DESTINATION: NEW SOUTH WALES/AUSTRALIAN CAPITAL TERRITORY



TRAVELLING TO NSW & ACT

Please examine the listed products carefully. Although broad terms such as 'fruits and vegetables' are used, exceptions may apply.

Fruits, vegetables & nuts (products)	from:	NT	QLD	SA	TAS	VIC	WA
F&V* (fresh)		⚠	⚠	⚠	✓	⚠	⚠
F&V* (cooked, canned, freeze-dried, dehydrated)		✓	✓	✓	✓	✓	✓
Fruit salad (sliced fresh)		✓	✓	✓	✓	✓	✓
Herbs (fresh)		✓	✓	✓	✓	✓	⚠
Herbs & spices (dried)		✓	✓	✓	✓	✓	✓
Nuts (dried)		✓	✓	✓	✓	✓	✓
Vegetable salad		✓	✓	✓	✓	✓	✓
Food items	from:	NT	QLD	SA	TAS	VIC	WA
Dairy products including milk, cheese & yoghurt (fresh & powdered)		✓	✓	✓	✓	✓	✓
Eggs		✓	✓	✓	✓	✓	✓
Fish (canned, smoked/cured)		✓	✓	✓	✓	✓	✓
Honey		⚠	⚠	⚠	⚠	⚠	⚠
Processed foods (noodles, bread, baby food, cereals, sauces, biscuits, fruit cake)		✓	✓	✓	✓	✓	✓
Meats (sausage, salami, sliced meats)		✓	✓	✓	✓	✓	✓
Rice		⚠	⚠	⚠	⚠	⚠	⚠
Tea & coffee		✓	✓	✓	✓	✓	✓
Other	from:	NT	QLD	SA	TAS	VIC	WA
Agricultural equipment (<i>contaminated with soil</i>)		⚠	⚠	⚠	⚠	⚠	⚠
Dogs, cats		✓	✓	✓	✓	✓	✓
Livestock (cattle, pigs, sheep, horses)		⚠	⚠	⚠	⚠	⚠	⚠
Native birds & mammals		⚠	⚠	⚠	⚠	⚠	⚠
Reptiles		⚠	⚠	⚠	⚠	⚠	⚠
Animal skins & hides		✓	✓	✓	✓	✓	✓
Boots (<i>free of soil</i>)		✓	✓	✓	✓	✓	✓
Fish (live)		⚠	⚠	⚠	⚠	⚠	⚠
Garden tools (<i>free of soil</i>)		✓	✓	✓	✓	✓	✓
Honeycomb, bees & used beekeeping equipment		⚠	⚠	⚠	⚠	⚠	⚠
Soil		✗	✗	✗	✗	✗	✗
Plant items	from:	NT	QLD	SA	TAS	VIC	WA
Banana planting material		✗	✗	✗	✗	✗	✗
Bulbs, corms (dormant)		✓	✓	✓	✓	✗	✗
Citrus plants, cuttings or budwood		⚠	✗	✓	✓	✓	⚠
Cut flowers & foliage		✓	✓	✓	✓	✓	✓
F&V* plants, seedlings & seeds		⚠	⚠	⚠	✓	⚠	⚠
Grapevines, cuttings or budwood		✗	✗	✗	✗	✗	✗
Lupin plant material		✓	✓	⚠	✓	✓	⚠
Potato planting material		✗	✗	✗	✗	✗	✗
Pot plants & nursery stock		⚠	⚠	✓	✓	⚠	⚠
Timber (raw or treated)		✓	✓	✓	✓	✓	⚠

* F&V – fruit and vegetables



For more information on carrying the following items into New South Wales and Australian Capital Territory, please contact:

- **Plants or plant products** – 1800 084 881, 02 6391 3384 or biosecurity@industry.nsw.gov.au
- **Fish or fish products** – 1300 550 474 or information-advisory@dpi.nsw.gov.au
- **Animals or animal products** – 02 6391 3384 or biosecurity@industry.nsw.gov.au
- **Native birds and wildlife including reptiles** – Office of Environment and Heritage 1300 361 967 or 02 9585 6406
- **Weeds** – Weeds hotline 1800 680 244 or weeds@dpi.nsw.gov.au
- **Aquatic pests or exotic fish** – 02 4916 3877 or aquatic.pests@dpi.nsw.gov.au
- www.dpi.nsw.gov.au/biosecurity

TRAVELLING WITHIN NEW SOUTH WALES/AUSTRALIAN CAPITAL TERRITORY

Banana Protected Area

Mid-north coast and Richmond-Tweed regions. Do not bring banana planting material into this area.

Greater Sunraysia Pest Free Area (PFA)

Part of the far west and Murray regions. Do not take fruit (including capsicum, chilli, tomato and eggplant) into the PFA.

Quarantine roadblocks and fruit disposal bins are strategically placed throughout NSW.

Phylloxera Exclusion Zone

All of NSW except for Albury/Corowa and the Sydney Basin. Do not take grapevines, cuttings or budwood into this zone.

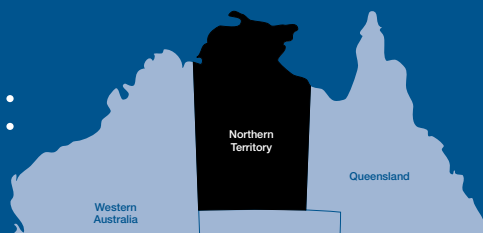
Rice Pest and Disease Exclusion Zone

Most of the Murrumbidgee and Murray regions. Do not bring rice plants, grain such as milled or brown rice, or rice products into this zone.

Seed Potato Protected Area

Parts of the south-eastern, central west and northern regions. Do not bring potato planting material into these areas.

DESTINATION: NORTHERN TERRITORY



TRAVELLING TO NT

Please examine the listed products carefully. Although broad terms such as 'fruits and vegetables' are used, exceptions may apply.

Fruits, vegetables & nuts (products)	from:	NSW	QLD	SA	TAS	VIC	WA
Banana		⚠	⚠	⚠	⚠	⚠	⚠
Citrus		⚠	⚠	⚠	⚠	⚠	⚠
Fruit (commercially-grown)		✓	✓	✓	✓	✓	⚠
F&V* (cooked, canned, freeze-dried, dehydrated)		✓	✓	✓	✓	✓	✓
F&V* (cucumber fly hosts eg zucchini, cucumber, melons, pumpkin, tomato, passionfruit)		⚠	⚠	⚠	⚠	⚠	⚠
F&V* (home-grown)		⚠	⚠	⚠	⚠	⚠	⚠
Fruit salad (fresh)		✓	✓	✓	✓	✓	✓
Herbs (fresh)		⚠	⚠	⚠	⚠	⚠	⚠
Herbs & spices (dried)		✓	✓	✓	✓	✓	✓
Nuts (dried)		✓	✓	✓	✓	✓	✓
Pawpaw (papaya)		⚠	⚠	⚠	⚠	⚠	⚠
Potato (ware and seed)		⚠	⚠	⚠	⚠	⚠	⚠
Vegetable salad		✓	✓	✓	✓	✓	✓
Vegetables (non-leafy, commercial)		⚠	⚠	⚠	⚠	⚠	⚠
Vegetables (leafy eg lettuce)		⚠	⚠	⚠	⚠	⚠	⚠
Food items	from:	NSW	QLD	SA	TAS	VIC	WA
Dairy products including milk, cheese & yoghurt (fresh & powdered)		✓	✓	✓	✓	✓	✓
Eggs (chicken & duck)		✓	✓	✓	✓	✓	✓
Fish (fresh, canned, smoked, cured)		✓	✓	✓	✓	✓	✓
Honey		⚠	⚠	⚠	⚠	⚠	⚠
Processed foods (noodles, bread, rice, baby food, cereals, sauces)		✓	✓	✓	✓	✓	✓
Meats (sausage, salami, sliced meats)		✓	✓	✓	✓	✓	✓
Tea, coffee & biscuits		✓	✓	✓	✓	✓	✓
Other	from:	NSW	QLD	SA	TAS	VIC	WA
Dogs & cats		✓	✓	✓	✓	✓	✓
Feral animals (fox, cane toad, dingo, European carp etc)		✗	✗	✗	✗	✗	✗
Fish (domestic or aquarium)		⚠	⚠	⚠	⚠	⚠	⚠
Horses		⚠	⚠	⚠	⚠	⚠	⚠
Livestock (cattle, pigs, sheep)		⚠	⚠	⚠	⚠	⚠	⚠
Native wildlife & caged birds		⚠	⚠	⚠	⚠	⚠	⚠
Yabbies		✗	✗	✗	✗	✗	✗
Animal skins & hides		✓	✓	✓	✓	✓	✓
Fishing bait (snails, worms etc)		✗	✗	✗	✗	✗	✗
Boots (<i>free of soil</i>)		✓	✓	✓	✓	✓	✓
Garden tools (<i>free of soil</i>)		✓	✓	✓	✓	✓	✓
Soil		✗	✗	✗	✗	✗	✗
Potting mix and compost		⚠	⚠	⚠	⚠	⚠	⚠
Machinery and equipment (agricultural, earthmoving)		⚠	⚠	⚠	⚠	⚠	⚠

* F&V – fruit and vegetables

STOP THE SPREAD OF FRUIT FLY



YOU ARE NOW ENTERING A
FRUIT FLY FREE
HORTICULTURAL AREA
BE FRUIT FLY AWARE

Northern Territory Government



Plant items	from:	NSW	QLD	SA	TAS	VIC	WA
Bulbs, corms (dormant)		✓	✓	✓	✓	✓	✓
Cut flowers & foliage		⚠	⚠	⚠	⚠	⚠	⚠
F&V* plants & seedlings		⚠	⚠	⚠	⚠	⚠	⚠
Grapevines, cuttings or budwood		⚠	⚠	✓	✓	⚠	⚠
Maize (seed)		⚠	⚠	✓	✓	✓	✓
Pot plants & nursery stock		⚠	⚠	⚠	⚠	⚠	⚠
Pinewood & pinewood products		✓	✓	✓	✓	✓	⚠
Seeds		✓	✓	✓	✓	✓	✓
Weeds & weed seeds		✗	✗	✗	✗	✗	✗



For more information on carrying the following items into Northern Territory, please contact:

- **Plants or plant products** – 08 8999 2118
- **Livestock** – 08 8999 2030
- **Live fish** – 08 8999 2144
- **Native birds and other wildlife** – 08 8995 5008 or 08 8999 4486
- **Aquatic pests** – 08 8999 2126 or 0413 381 094
- **Fisheries** – 08 8999 2144

Note: No plant or plant product, whether listed or not, is permitted entry if found to be affected by a pest or disease.

TRAVELLING WITHIN NORTHERN TERRITORY

Movement of plant products into and/or out of the following zones is regulated

Ti Tree Fruit Fly Exclusion Zone (FFEZ)

The Ti Tree FFEZ extends from Tennant Creek to Alice Springs. Do not take fruit (including capsicum, chilli, tomato, eggplant, cucumber, zucchini and squash) into the FFEZ.

Adelaide River

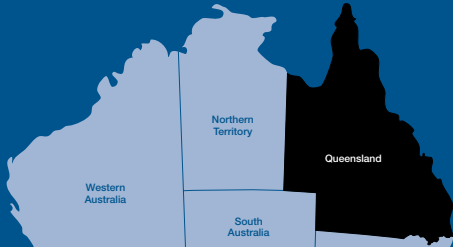
Restrictions apply to fruit and vegetables when travelling south from Darwin to prevent the spread of the pest melon thrips.

The following produce must not be carried south along the Stuart Highway beyond the Adelaide River township:

- beans
- capsicum
- chilli

- cucumber
- eggplant
- melons
- mango fruit and mango plants (unless treated against leaf hopper)
- okra
- pumpkin
- silverbeet
- squash
- tomato
- zucchini.

DESTINATION: QUEENSLAND



TRAVELLING TO QLD

Please examine the listed products carefully. Although broad terms such as 'fruits and vegetables' are used, exceptions may apply.

Fruits, vegetables & nuts (products)	from:	NSW	NT	SA	TAS	VIC	WA
Citrus fruit		✓	✓	✓	✓	✓	✗
Fruit and fruiting vegetables (fresh, except banana and mango)		✓	✓	✓	✓	✓	✗
• banana fruit (must be removed from bunch stalk)		✓	✗	✓	✓	✓	✗
• mango fruit (stalks must be removed)		✓	✓	✓	✓	✓	✗
Fruit salad (fresh)		✓	✓	✓	✓	✓	✓
F&V* (dried, cooked, frozen, canned)		✓	✓	✓	✓	✓	✓
Herbs (fresh)		✓	✓	✓	✓	✓	✓
Herbs & spices (dried)		✓	✓	✓	✓	✓	✓
Nuts (dried)		✓	✓	✓	✓	✓	✓
Pawpaw (papaya)		⚠	⚠	⚠	⚠	⚠	⚠
Potatoes (fresh or seed)		✓	✓	✓	✓	✗	✓
Vegetables (leafy eg lettuce)		✓	✓	✓	✓	✓	✓
Food items	from:	NSW	NT	SA	TAS	VIC	WA
Camping foods (freeze-dried/dehydrated)		✓	✓	✓	✓	✓	✓
Dairy products including milk, cheese & yoghurt (fresh & powdered)		✓	✓	✓	✓	✓	✓
Eggs		✓	✓	✓	✓	✓	✓
Fish (fresh, canned, smoked, cured)		✓	✓	✓	✓	✓	✓
Honey		⚠	⚠	⚠	⚠	⚠	⚠
Meats (sausage, salami, sliced meats)		✓	✓	✓	✓	✓	✓
Processed foods (eg noodles, bread, rice, cereals, baby food, fruit cake, tea)		✓	✓	✓	✓	✓	✓
Other	from:	NSW	NT	SA	TAS	VIC	WA
Animals (dogs & cats)		✓	✓	✓	✓	✓	✓
Animals (fish – aquarium not noxious)		✓	✓	✓	✓	✓	✓
Animals (fish – declared noxious)		✗	✗	✗	✗	✗	✗
Animals (pets except dogs, cats, fish)		⚠	⚠	⚠	⚠	⚠	⚠
Animals (pet rabbits, pet ferrets)		✗	✗	✗	✗	✗	✗
Animals (livestock – cattle, pigs, sheep)		⚠	⚠	⚠	⚠	⚠	⚠
Animals (native birds & wildlife)		⚠	⚠	⚠	⚠	⚠	⚠
Animal skins & hides		✗	✗	✓	✓	✓	✗
Boots (<i>free of soil and not associated with bananas, sugarcane, mangoes or grape vines</i>)		✓	✓	✓	✓	✓	✓
Garden tools (<i>washed and totally free of soil</i>)		✓	⚠	✓	✓	⚠	✓
Honeycomb, bees & used beekeeping equipment		⚠	⚠	⚠	⚠	⚠	⚠
Soil or anything containing soil		✗	✗	✗	✗	✗	✗

* F&V – fruit and vegetables



Plant items	from:	NSW	NT	SA	TAS	VIC	WA
Banana plants and seeds of Musaceae (<i>Musa</i> , <i>Musella</i> and <i>Ensete</i>)		✗	✗	✗	✗	✗	✗
Bare rooted plants		✓	✓	✓	✓	⚠	✓
Bulbs, corms etc (<i>dormant and free of soil</i>)		✓	⚠	⚠	✓	⚠	✓
Cut flowers & foliage		✓	✓	✓	✓	✓	✓
Flower seedlings		✓	✓	✓	✓	⚠	✓
F&V* plants & seedlings		⚠	⚠	⚠	⚠	⚠	⚠
Grapes, grapevines, cuttings or budwood		✗	✗	✗	✗	✗	✗
House/pot plants		⚠	⚠	⚠	⚠	⚠	⚠
Native plants		⚠	⚠	⚠	⚠	⚠	⚠
Plants of the <i>Saccharum</i> genus (sugarcane, pit-pit)		✗	✗	✗	✗	✗	✗
Stock feed (hay, grains, bird food)		✓	✓	⚠	✓	✓	✓
Strawberry plants		✓	✓	✓	✓	✓	✓
Timber		✓	✓	✓	✓	✓	⚠
Weeds & weed seeds		✗	✗	✗	✗	✗	✗



For more information on carrying the following items into Queensland, please contact:

- **Plants or plant products, skins and hides, movement of livestock, pets (except declared noxious fish), declared noxious fish** – Department of Agriculture, Fisheries and Forestry (DAFF) customer service centre on 07 3404 6999 or callweb@daff.qld.gov.au
- www.daff.qld.gov.au/biosecurity
- **Native plants, birds and wildlife** – Environment and Heritage Protection 1300 130 372

TRAVELLING WITHIN QUEENSLAND

Movement of plant products into and/or out of areas within Queensland is regulated.

The whole of the state is a pest quarantine area for bananas. Do not take banana plants, fruit, soil or items that have been in contact with banana plants into Queensland.

For more information about the following quarantine areas, please contact the DAFF customer service centre on 07 3404 6999.

- Banana Pest Quarantine Area
- Cape York Peninsula Pest Quarantine Area
- Fire Ant Pest Quarantine Area
- Mango Leafhopper Pest Quarantine Area
- Papaya Ring Spot Quarantine Area
- Phylloxera Exclusion Zone – do not take grapes, grape vines, cuttings, budwood or soil from within 100m of a living grape vine into this zone.
- Sugarcane Pests Quarantine Area.

DESTINATION: SOUTH AUSTRALIA



TRAVELLING TO SA

Please examine the listed products carefully. Although broad terms such as 'fruits and vegetables' are used, exceptions may apply.

Fruits, vegetables & nuts (products)	from:	NSW	NT	QLD	TAS	VIC	WA
Asparagus		✓	✓	✓	✓	⚠	⚠
Fruit (fresh)		✗	✗	✗	✗	✗	✗
Fruit salad (fresh)		⚠	⚠	⚠	⚠	⚠	⚠
F&V* (processed, dried, preserved, cooked, frozen, canned)		✓	✓	✓	✓	✓	✓
Herbs (fresh)		✓	✓	✓	✓	⚠	⚠
Herbs and spices (dried)		✓	✓	✓	✓	✓	✓
Melons (watermelon, rockmelon, honeydew)		✗	✗	✗	✗	✗	✗
Mushrooms		✓	✓	✓	✓	✓	✓
Nuts (dried)		✓	✓	✓	✓	✓	✓
Onions, garlic, leeks, spring onions, chives etc		⚠	⚠	⚠	⚠	⚠	⚠
Pineapple		✓	✓	✓	✓	✓	✓
Potatoes		⚠	⚠	⚠	⚠	⚠	⚠
Sweet potatoes		✓	✓	✓	✓	✓	✓
Spinach, silver beet		✗	✗	✗	✗	✗	✗
Tomato plants		⚠	⚠	⚠	⚠	⚠	⚠
Vegetables (cucurbit eg cucumber, pumpkin, squash, zucchini)		✗	✗	✗	✗	✗	✗
Vegetables (fruiting eg capsicum, chilli, eggplant, tomato, tamarillo)		✗	✗	✗	✗	✗	✗
Vegetables (leafy eg lettuce, cabbage, cauliflower, broccoli)		✓	✓	✓	✓	⚠	⚠
Vegetables (root eg beetroot, turnip, swede, parsnip, carrot) (free of soil and tops removed)		✓	✓	✓	✓	✓	✓
Food items	from:	NSW	NT	QLD	TAS	VIC	WA
Camping food (freeze-dried, dehydrated)		✓	✓	✓	✓	✓	✓
Dairy products including milk, cheese and yoghurt		✓	✓	✓	✓	✓	✓
Fish (fresh or canned)		✓	✓	✓	✓	✓	✓
Honey, honeycomb, beeswax, pollen, Propolis (bee products)		⚠	⚠	⚠	⚠	⚠	⚠
Meats (poultry, sausage, salami, sliced meats)		✓	✓	✓	✓	✓	✓
Processed foods (eg noodles, bread, rice, cereals, baby food, biscuits, cakes)		✓	✓	✓	✓	✓	✓
Other	from:	NSW	NT	QLD	TAS	VIC	WA
Animals (dogs & cats)		✓	✓	✓	✓	✓	✓
Cartons (fruit & vegetable, used for packaging containers)		✓	✓	✓	✓	✓	✓
Eggs (poultry hatching)		✓	✓	✓	✓	✓	✓
Honeycomb, bees & used beekeeping equipment		⚠	⚠	⚠	⚠	⚠	⚠
Soil		✗	✗	✗	✗	✗	✗
Stock feed (hay & fodder)		✓	✓	⚠	✓	⚠	⚠

* F&V – fruit and vegetables



Plant items	from: NSW	NT	QLD	TAS	VIC	WA
Bulbs, corms (<i>dormant</i>)	✓	✓	✓	✓	✓	✓
Citrus plants	⚠	⚠	✗	⚠	⚠	⚠
Date palms	✓	⚠	⚠	✓	⚠	⚠
Cut flowers (excluding <i>Myrtaceae</i>)	✓	✓	✓	✓	⚠	⚠
Grapes, grapevines, cuttings, budwood	✗	✗	✗	✗	✗	✗
House/pot plants and cuttings	⚠	⚠	⚠	⚠	⚠	⚠
<i>Pinus</i> plants	⚠	⚠	⚠	⚠	⚠	⚠
Plant nursery stock	⚠	⚠	⚠	⚠	⚠	⚠
Seeds (edible or sprouting)	✓	✓	✓	✓	✓	✓



For more information on carrying the following items into South Australia, please contact:

- **Fruit, vegetables and plant material** – 08 8207 7820
- **Aquarium fish and plants, and exotic fish** – Fishwatch 1800 065 522
- **Bees, bee products and beekeeping equipment** – 08 8207 7820
- **Livestock, and animal health enquiries** – 08 8648 5166
- **Native animals** – Fauna Permits Office 08 8124 4700
- **Exotic animals** – 08 8303 9520

TRAVELLING WITHIN SOUTH AUSTRALIA

Kangaroo Island

Kangaroo Island has a Ligurian Bee Sanctuary and a Potato Protected Production Area. Carrying honey, bees and bee products onto the island is prohibited. Potatoes are also prohibited unless they have been washed or brushed free of soil and are in new packaging.

Riverland of South Australia

Do not take fresh, unprocessed fruit and fruiting vegetables (including capsicum, chilli, tomato and eggplant) into the Riverland of South Australia without an itemised receipt from an SA retail outlet or a plant health certificate.

South Australian Quarantine Checkpoints

Quarantine stations and fruit disposal bins are strategically placed throughout South Australia. Mobile quarantine stations can operate anywhere and at anytime within South Australia.

DESTINATION: TASMANIA



TRAVELLING TO TASMANIA

Please examine the listed products carefully. Although broad terms such as 'fruits and vegetables' are used, exceptions may apply.

Fruits, vegetables & nuts (products)	from:	NSW	NT	QLD	SA	VIC	WA
F&V* (fresh)		⚠	⚠	⚠	⚠	⚠	⚠
F&V* (cooked, hard frozen, canned, preserved, dried commercially)		✓	✓	✓	✓	✓	✓
Fruit salad (fresh)		✗	✗	✗	✗	✗	✗
Herbs (fresh)		⚠	⚠	⚠	⚠	⚠	⚠
Herbs & spices (dried & non-viable)		✓	✓	✓	✓	✓	✓
Nuts (dried)		✓	✓	✓	✓	✓	✓
Onions, shallots, chives, garlic		⚠	⚠	⚠	⚠	⚠	⚠
Peas (fresh or dried; including seeds for sowing)		⚠	⚠	⚠	⚠	⚠	⚠
Potatoes (fresh or seed)		✗	✗	✗	✗	✗	✗
Vegetable/summer salad		✗	✗	✗	✗	✗	✗
Food items	from:	NSW	NT	QLD	SA	VIC	WA
Camping foods (freeze-dried)		✓	✓	✓	✓	✓	✓
Dairy products including milk, cheese & yoghurt (fresh & powdered)		✓	✓	✓	✓	✓	✓
Eggs		✓	✓	✓	✓	✓	✓
Fish (canned)		✓	✓	✓	✓	✓	✓
Fish (flake, snapper, coral trout, barramundi, tuna, whiting, trevally, ling, squid, prawns, crab meat, crayfish) (fresh/frozen, whole/fillets)		✓	✓	✓	✓	✓	✓
Fish (salmon, trout, eel, hake, herring, cod, perch, mullet, flounder, bream, flathead, sardine); pickled herring (rollmops); shellfish (oysters, clams, mussels, abalone (dead or alive))		✗	✗	✗	✗	✗	✗
Honey (unless certified as heat treated)		✗	✗	✗	✗	✗	✗
Meats (poultry, sausage, salami, sliced meats)		✓	✓	✓	✓	✓	✓
Meats (pork, lamb, beef for personal consumption)		✓	✓	✓	✓	✓	✓
Processed foods (noodles, bread, rice, cereals, baby food, biscuits, fruit cake, pastries, jams, sauces)		✓	✓	✓	✓	✓	✓
Tea & coffee		✓	✓	✓	✓	✓	✓
Other	from:	NSW	NT	QLD	SA	VIC	WA
Agricultural equipment contaminated with plant material or soil		✗	✗	✗	✗	✗	✗
Cats, horses, guinea pigs		✓	✓	✓	✓	✓	✓
Dogs (<i>must be treated for hydatid tapeworm prior to arrival</i>)		⚠	⚠	⚠	⚠	⚠	⚠
Feral animals (fox, cane toad, European carp, Indian myna etc)		✗	✗	✗	✗	✗	✗
Fish (freshwater or marine)							
• Private or commercial imports		⚠	⚠	⚠	⚠	⚠	⚠
• Fishing bait (snails, worms etc)		✗	✗	✗	✗	✗	✗
• Fish products		⚠	⚠	⚠	⚠	⚠	⚠
• Goldfish		✗	✗	✗	✗	✗	✗
Livestock (cattle, pigs, sheep)		⚠	⚠	⚠	⚠	⚠	⚠
Native wildlife, pigeons & aviary birds		⚠	⚠	⚠	⚠	⚠	⚠
Reptiles, ferrets & amphibians		✗	✗	✗	✗	✗	✗
Poultry & hatching eggs		✓	✓	✓	✓	✓	✓

* F&V – fruit and vegetables



Other continued	from:	NSW	NT	QLD	SA	VIC	WA
Animals (yabbies/freshwater crayfish)		✗	✗	✗	✗	✗	✗
Animal skins & hides (untanned fox skins)		⚠	⚠	⚠	⚠	⚠	⚠
Boots (<i>free of soil</i>)		✓	✓	✓	✓	✓	✓
Fishing & diving equipment inc. boats & waders (marine or freshwater)		⚠	⚠	⚠	⚠	⚠	⚠
Garden tools (<i>free of soil</i>)		✓	✓	✓	✓	✓	✓
Honeycomb, bees & used beekeeping equipment		✗	✗	✗	✗	✗	✗
Soil or anything containing soil		✗	✗	✗	✗	✗	✗
Plant items	from:	NSW	NT	QLD	SA	VIC	WA
Bulbs, corms		⚠	⚠	⚠	⚠	⚠	⚠
Cut flowers & foliage		⚠	⚠	⚠	⚠	⚠	⚠
F&V* plants, seedlings & seeds		⚠	⚠	⚠	⚠	⚠	⚠
Grapevines, cuttings or budwood		⚠	⚠	⚠	⚠	⚠	⚠
House/pot plants & nursery stock		⚠	⚠	⚠	⚠	⚠	⚠
Stock feed (hay, grain, birdseed/sticks)		⚠	⚠	⚠	⚠	⚠	⚠
Timber & timber products (untreated)		⚠	⚠	⚠	⚠	⚠	⚠
Weeds & weed seeds		✗	✗	✗	✗	✗	✗



For more information on carrying the following items into Tasmania, please contact:

- **Plants or plant products and seafood** – 03 6165 3777
- **Fish, fish products and fishing/diving equipment (marine and freshwater)** – 03 6165 3777
- **Dogs (treatment for hydatid tapeworm prior to arrival)** – 1800 684 215
- **Livestock/pets/domestic animals (including livestock restrictions applying to Bass Strait Islands)** – Quarantine Vet 03 6165 3777
- **Native wildlife and aviary birds** – 03 6165 4305
- **Restricted fin-fish** – www.dpipwe.tas.gov.au/importinganimals

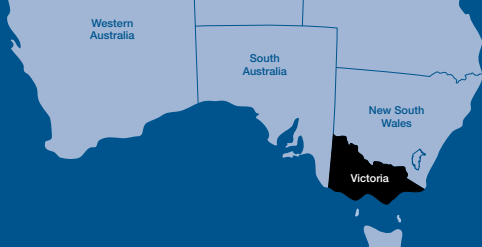
Note: Taking rabbits to King, Flinders and other Bass Strait Islands is prohibited.

TRAVELLING WITHIN TASMANIA

Tasmanian quarantine checkpoints

Plant and animal quarantine examinations are conducted at all points of entry into Tasmania. On-the-spot fines apply for both commercial and non-commercial imports.

DESTINATION: VICTORIA



TRAVELLING TO VICTORIA

Please examine the listed products carefully. Although broad terms such as 'fruits and vegetables' are used, exceptions may apply.

Fruits, vegetables & nuts (products)	from:	NSW	NT	QLD	SA	TAS	WA
Fruit (fresh)		⚠	⚠	⚠	⚠	✓	⚠
Fruit salad (fresh)		✓	✓	✓	✓	✓	✓
F&V* (dried, dehydrated, freeze-dried, cooked, frozen, canned)		✓	✓	✓	✓	✓	✓
Grapes (table)		⚠	⚠	⚠	⚠	✓	⚠
Herbs (fresh)		✓	✓	✓	✓	✓	⚠
Herbs & spices (dried)		✓	✓	✓	✓	✓	✓
Melons		✓	✓	✓	✓	✓	✓
Nuts (dried)		✓	✓	✓	✓	✓	✓
Onions		✓	✓	✓	✓	✓	✓
Vegetables (leafy eg lettuce, cabbage)		✓	✓	⚠	✓	✓	⚠
Vegetables (root eg carrot, parsnip)		✓	✓	✓	✓	✓	✓
Vegetable salad		✓	✓	✓	✓	✓	✓
Food items	from:	NSW	NT	QLD	SA	TAS	WA
Dairy products including milk, cheese & yoghurt (fresh & powdered)		✓	✓	✓	✓	✓	✓
Eggs		✓	✓	✓	✓	✓	✓
Fish (fresh, canned, smoked, cured)		✓	✓	✓	✓	✓	✓
Honey		⚠	⚠	⚠	⚠	⚠	⚠
Meats (sausage, salami, sliced meats)		✓	✓	✓	✓	✓	✓
Processed foods (noodles, bread, rice, cereals, baby food, biscuits, fruit cake)		✓	✓	✓	✓	✓	✓
Other	from:	NSW	NT	QLD	SA	TAS	WA
Animals (dogs & cats)		✓	✓	✓	✓	✓	✓
Boots (<i>free of soil</i>)		✓	✓	✓	✓	✓	✓
Garden tools (<i>free of soil</i>)		✓	✓	✓	✓	✓	✓
Honeycomb, bees & used beekeeping equipment		⚠	⚠	⚠	⚠	⚠	⚠
Soil		⚠	✓	⚠	⚠	✓	⚠
Plant items	from:	NSW	NT	QLD	SA	TAS	WA
Bare rooted plants (except vines)		⚠	⚠	⚠	⚠	✓	⚠
Blueberry plants		⚠	✓	⚠	⚠	✓	⚠
Bulbs, corms		✓	✓	✓	✓	✓	✓
Citrus plants		⚠	✓	⚠	✓	✓	⚠
Cut flowers & foliage		⚠	⚠	⚠	⚠	✓	⚠
Flower seedlings		✓	✓	⚠	✓	✓	⚠
Grapevines, cuttings or budwood		⚠	✓	⚠	✓	✓	⚠
House/pot plants		⚠	⚠	⚠	⚠	✓	⚠
Stock feed (hay, grains, bird food)		⚠	✓	⚠	⚠	✓	⚠
Timber (raw or treated)		✓	✓	✓	✓	✓	⚠
Vegetable seedlings		✓	✓	⚠	✓	✓	⚠
Weeds & weed seeds		⚠	⚠	⚠	⚠	⚠	⚠

* F&V – fruit and vegetables



For more information on carrying the following items into Victoria, please contact:

Department of Environment and Primary Industries (DEPI) Victoria – 136 186 or visit www.depi.vic.gov.au/psb

- **Plants, plant products or soil**
- **Animals (including honeybees)**
- **Weeds.**

TRAVELLING WITHIN VICTORIA

Movement of plant products into and/or out of the following zones is regulated

Greater Sunraysia Pest Free Area

The Greater Sunraysia Pest Free Area (PFA) was established to protect fruit production areas along the Murray River from Queensland fruit fly. Do not take fruit or fruiting vegetables (including capsicum, chilli, tomato and eggplant) into the PFA. Fruit disposal bins are in place in the PFA and quarantine roadblocks may operate in this zone. Signs on major roads indicate when you are entering the PFA.

Phylloxera Control Areas

Control areas have been established in Victoria to prevent the spread of the grapevine pest phylloxera. Signs on major roads indicate when you are entering a Phylloxera Exclusion Zone or leaving a Phylloxera Infested Zone, and that restrictions on the movement of grapevines exist for each zone.

Potato Plant Protection Districts

Potato Plant Protection Districts (PPDs) are established around some Victorian seed potato production regions in order to reduce biosecurity threats. Signs on major roads indicate when you are entering a PPD and what restrictions on potato movement apply.

Toolangi Plant Protection District

The Toolangi Plant Protection District is a protected area in which plant breeding programs are conducted. The entry of plants for propagation into this area is restricted.

For more information about these zones, please contact DEPI Victoria on 136 186 or visit www.depi.vic.gov.au/psb

DESTINATION: WESTERN AUSTRALIA



TRAVELLING TO WA

Please examine the listed products carefully. Although broad terms such as 'fruits and vegetables' are used, exceptions may apply.

Fruits, vegetables & nuts (products)	from:	NSW	NT	QLD	SA	TAS	VIC
F&V* (fresh)		⚠	⚠	⚠	⚠	⚠	⚠
• exceptions (providing they are free of soil, pests, disease and any sprouting or green growth): beetroot, carrot, coconut, corn on the cob, ginger, mushrooms, parsnip, pineapple, swede, galangal, sweet potato, taro, turnip		✓	✓	✓	✓	✓	✓
F&V* (frozen or commercially dried & packaged)		✓	✓	✓	✓	✓	✓
• providing: banana leaves are cooked; mangoes are pitted; pawpaws (papaya) are peeled							
• exceptions: grapes, guava, onions, potatoes		✗	✗	✗	✗	✗	✗
F&V* (cooked)		✓	✓	✓	✓	✓	✓
Nuts (walnuts; raw in shell)		✗	✗	✗	✗	✗	✗
Nuts (other)		✓	✓	✓	✓	✓	✓
Food items	from:	NSW	NT	QLD	SA	TAS	VIC
Dairy products		✓	✓	✓	✓	✓	✓
Eggs		✓	✓	✓	✓	✓	✓
Fish & seafood (fresh, frozen, smoked/cured, cooked)		✓	✓	✓	✓	✓	✓
Herbs (<i>fresh cut; free of soil, pests, disease</i>)		✓	✓	✓	✓	✓	✓
Herbs & spices (commercially dried)		✓	✓	✓	✓	✓	✓
Honey & other hive products (unless certified as heat-treated)		✗	✗	✗	✗	✗	✗
Lentils, split peas, beans (split or processed)		✓	✓	✓	✓	✓	✓
Meat products (fresh, frozen, dried or processed)		✓	✓	✓	✓	✓	✓
Processed foods (biscuits, fruit cake, fruit juice, cordial, polished rice, cereals, bread, chips, baby food, jams, pickles, soups)		✓	✓	✓	✓	✓	✓
Processed items (flour, sugar, tinned F&V)		✓	✓	✓	✓	✓	✓
Rice (unmilled)		✗	✗	✗	✗	✗	✗
Seeds (<i>edible – commercially packaged</i>)		⚠	⚠	⚠	⚠	⚠	⚠
• exceptions: pumpkin, sun flower, pepita		✓	✓	✓	✓	✓	✓
Tea & coffee (commercially packaged, beans)		✓	✓	✓	✓	✓	✓
Truffles (<i>for consumption – free of soil, pests, disease</i>)		✓	✓	✓	✓	✓	✓
Other	from:	NSW	NT	QLD	SA	TAS	VIC
Animals (birds/fish/aquariums/wildlife): pets or other		⚠	⚠	⚠	⚠	⚠	⚠
Animals (domestic: cats & dogs)		✓	✓	✓	✓	✓	✓
Animals skins & hides (<i>free of plant material, seeds, soil & pests</i>)		✓	✓	✓	✓	✓	✓
Animals (livestock: cattle, pigs, sheep, horses etc)		⚠	⚠	⚠	⚠	⚠	⚠
Bees & apiary equipment		✗	✗	✗	✗	✗	✗
Containers (agricultural/horticultural; used, including sacks, bags, cartons)		✗	✗	✗	✗	✗	✗
Soil (including in plant pots)		✗	✗	✗	✗	✗	✗
Plant items	from:	NSW	NT	QLD	SA	TAS	VIC
Bulbs		⚠	⚠	⚠	⚠	⚠	⚠
Cut flowers & foliage		⚠	⚠	⚠	⚠	⚠	⚠
Garden/house/pot plants		⚠	⚠	⚠	⚠	⚠	⚠
Seeds		⚠	⚠	⚠	⚠	⚠	⚠

* F&V – fruit and vegetables



Plant items (cont.)	from:	NSW	NT	QLD	SA	TAS	VIC
Stock feed (hay/fodder)		✗	✗	✗	✗	✗	✗
Timber (dressed/without bark)		✓	✓	✓	✓	✓	✓
Wood (firewood: dried & bark-free)		✓	✓	✓	✓	✓	✓
Wood (ornamental: dried & bark-free)		✓	✓	✓	✓	✓	✓



For more information on carrying the following items into Western Australia, please contact:

Quarantine WA – 08 9334 1800 or followup@agric.wa.gov.au

- Bees, bee products, bee keeping equipment
- Fish, aquarium fish
- Plant or plant products
- Livestock and stock movement
- Travelling with exotic/non-native animals and insects
- Domestic travellers – general enquires 1800 084 881.

Department of Parks and Wildlife (DPaW) – 08 9219 9831 or wildlifelicensing@dpaw.wa.gov.au

- Aviary birds
- Native animals (reptiles, birds, mammals)
- Native insects.

TRAVELLING WITHIN WESTERN AUSTRALIA

The movement of plant products into and/or out of the following zones is regulated

Carnarvon and Kununurra areas

Only certified bananas can enter Carnarvon area. Banana plants, leaves and soil must not be removed from the Carnarvon and Kununurra areas.

Kimberley region

Broccoli, lettuce and spinach is prohibited in the Shires of Broome and Wyndham East Kimberley from parts of Western Australia outside the Kimberley region, unless certified by Quarantine WA.

Ord River Irrigation Area

Uncertified citrus and stone fruit are prohibited entry into the Ord River Irrigation Area (Kununurra) from 1 April to 30 November.

Uncertified cut flowers, foliage and leafy vegetables are not allowed out of the Ord River Irrigation Area (Kununurra).

Broome area

Uncertified palm plants and foliage are not allowed out of the Broome area.

Gin Gin and South-west

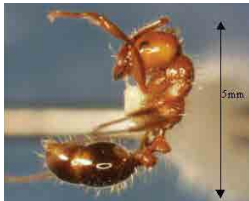
Potatoes imported into WA from another state/territory (except Tasmania) are not allowed entry into the potato-growing areas of the state.

SOME MAJOR THREATS

Red imported fire ant (*Solenopsis invicta*)

Threat: Red imported fire ants inflict a fiery sting, which may cause an allergic reaction. Invasions can make recreational areas unusable and damage native flora and fauna and pets.

Spread: By the movement of infested materials such as pot plants, soil, mulch and timber.



Red imported fire ant. DAFF Qld (Peter Green)

Queensland fruit fly (*Bactrocera tryoni*)

Threat: The feeding of Queensland fruit fly larvae (maggots) makes fruit inedible, lowering production and severely affecting trade to sensitive markets.

Spread: By the movement of uncertified host fruit out of infested areas. Most fresh fruits, including capsicum, chillies and tomatoes, are fruit fly hosts.



Queensland fruit flies. DEPI Vic

Grape phylloxera (*Daktulosphaira vitifoliae*)

Threat: The feeding of the phylloxera aphid on grapevine roots causes vines to decline and possibly die. It can also affect market access for the viticulture industry.

Spread: By the movement of grapevine rootlings, equipment and soil from infested areas.



Phylloxera aphids. DEPI Vic

Green snail (*Cantareus apertus*)

Threat: Green snail can significantly damage a wide range of plants, including most leafy vegetables, cereal crops, lupins, pasture grasses and native plants.

Spread: By the movement of host plant material.



Green snail. DAF WA

Potato cyst nematode (*Globodera rostochiensis*)

Threat: Potato cyst nematode (PCN) feeds on the roots of potatoes, tomatoes and related crops, reducing crop yields and resulting in trade restrictions.

Spread: By the movement of host plants or of soil attached to plants, bulbs, advanced trees or agricultural equipment.



PCN-infested potato roots. DEPI Vic.

European house borer (*Hylotrupes bajulus*)

Threat: European house borer (EHB) larvae chew through the wood of seasoned coniferous timber and can cause major structural damage to buildings and furniture.

Spread: By the movement of infested host timber, including building materials, wooden pallets and pine furniture.



(L-R) EHB larva, male adult and female adult. DAF WA

Further information on pests and diseases of quarantine importance is available on the Quarantine Domestic website www.quarantinedomestic.gov.au



FURTHER INFORMATION

Australian Capital Territory

Environment Protection and Heritage
Licensing & Compliance Unit
Level 2, Macarthur House.
12 Wattle St, Lyneham ACT 2602
Ph: 02 6207 6376 **Fax:** 02 6207 2316
Email: environmentACT@act.gov.au
Website: www.act.gov.au



New South Wales

NSW Department of Primary Industries
161 Kite St, Orange NSW 2800
Ph: 02 6391 3100 **Fax:** 02 6391 3206
Email: biosecurity@dpi.nsw.gov.au
Website: www.dpi.nsw.gov.au



Department of
Primary Industries

Northern Territory

Department of Primary Industry and Fisheries
Biosecurity & Product Integrity Division
NT Quarantine
GPO Box 3000, Darwin NT 0801
Ph: 08 8999 2118 **Fax:** 08 8999 8328
Email: quarantine@nt.gov.au
Website: www.nt.gov.au/d/Primary_Industry/index.cfm



Northern
Territory
Government

Queensland

Department of Agriculture, Fisheries and Forestry
Biosecurity Queensland
GPO Box 46, Brisbane QLD 4001
Ph: 07 3404 6999 **Fax:** 07 3087 8328
Email: callweb@daff.qld.gov.au
Website: www.biosecurity.qld.gov.au



South Australia

Primary Industries and Regions
Biosecurity SA – Plant Health
33 Flemington St, Glenside SA 5065
Ph: 08 8207 7820 **Fax:** 08 8207 7844
Email: pirs.planthealth@sa.gov.au
Website: www.pir.sa.gov.au



Government of South Australia
Primary Industries and Regions SA

Tasmania

Department of Primary Industries, Parks,
Water and Environment
3rd Floor, 169 Main Rd, Moonah TAS 7008
Ph: 03 6165 3777 **Fax:** 03 6233 8885
Email: quarantine.enquiries@dpiwve.tas.gov.au
Website: www.dpiwve.tas.gov.au/quarantine



Victoria

Department of Environment and Primary Industries
Biosecurity Victoria
Melbourne Markets Box 126, 542 Footscray Rd
West Melbourne VIC 3003
Ph: 136 186 **Fax:** 03 9687 6746
Email: plant.standards@depi.vic.gov.au
Website: www.depi.vic.gov.au/psb



Department of
Environment and
Primary Industries

Western Australia

Department of Agriculture and Food
Quarantine WA
Locked Bag 69 Welshpool DC, WA 6986
9 Fricker Rd, Perth International Airport WA 6105
Ph: 08 9334 1800 **Fax:** 08 9334 1888
Email: followup@agric.wa.gov.au
Website: www.agric.wa.gov.au



Department of
Agriculture and Food



Do not take fruit, vegetables, plants or flowers across State and quarantine borders. **PENALTIES APPLY.**

Jangan membawa buah-buahan, sayur-sayuran, tanaman atau bunga melewati batas-batas negara bagian dan karantina. **DENDA DIBERLAKUKAN**

Está prohibido pasar frutas, verduras, plantas y flores al otro lado de los límites estatales y los de cuarentena. **SE IMPONDRÁN MULTAS.**

لا تنقل الفواكه، الخضروات، النباتات أو الزهور عبر حدود الولايات أو حدود الحجر الصحي. تُفرض الغرامات.

不要把水果、蔬菜、植物或鮮花帶過州和檢疫邊境。違者受罰。

州境界及び檢疫線を越えて果物、野菜、植物または花を持ち込まないでください。違反者には罰則が適用されます。



**IF IN DOUBT,
THROW IT OUT**



For more information, visit the website
www.quarantinedomestic.gov.au
or telephone Freecall 1800 084 881

Quarantine Domestic