



FIRE PROTECTION PRODUCTS

Fire Alarm Signals, Photoelectric Smoke Alarms, and Accessories for Faster, More Efficient Installation and Operation

ALL NEW GENTEX COLOR CODES!



GENTEX
CORPORATION

1.800.436.8391
www.gentex.com

9 ESSENTIAL FEATURES OF GENTEX PRODUCTS

Fire and security professionals know Gentex as well designed photoelectric smoke alarms and signals that deliver outstanding performance. Gentex Fire Protection Products are backed by outstanding service, excellent warranty and a performance record second to none. What's more, Gentex offers critical features not available from other manufacturers . . . nine more reasons to specify and install Gentex products.

1 CHECKMATE™ INSTANT VOLTAGE VERIFICATION

Available on Commander², Commander³ and Commander⁴ Series

- Quick, easy terminal test port access
- Insert probe on last signal to read voltage drop
- Verify current draw calculations to the blueprint
- Easier to check for opens and ground faults



2 SUPER-SLIDE™ MOUNTING BRACKET

Available on Commander², Commander³ and Commander⁴ Series

- Pre-wire your system, test for system supervision, remove the signal head until occupancy
- Switch out Gentex signals without changing mounting brackets
- Universal die cast mounting bracket
- Locking edge connector for snap-in-place installation
- Mounts to any available back box



3 SUPERVISION TESTER

Available on Commander², Commander³ and Commander⁴ Series

- Test for system supervision with a circuit card
- Saves time for easy troubleshooting
- Easy and reliable for horns and horn/strobes
- Install A/V appliance just prior to occupancy



4 TAMPERPROOF LOCK

Available on Commander³ and Commander⁴ Series

- Select candela then install unit to pre-wired system
- Locking pin/screw prevents unauthorized candela selection change



5 FIELD SELECTABLE CANDELA

Available on Commander³ and Commander⁴ Series

- One signal for all your candela needs
- Easy candela selection during installation
- Locking pin/screw prevents unauthorized candela change
- Streamline inventory and reduce inventory carrying costs



6 WIDE VARIETY OF EMERGENCY NOTIFICATION OPTIONS

Available on Selectable Candela Ceiling and Wall Mount Versions

- Choose blue, red, amber or green lens
- Same great features as Commander³ and Commander⁴ signals
- UL 1971, UL 1638, UL464 and HKFSD listed
- Add GOE/GOELP enclosure for wall mount weatherproof applications



7 .88% AND 3.45% SMOKE TEST

Available on 7000, 9000, 710CS/LS and 8000 Series

- Three-position test feature to simulate a true smoke condition
- Meets NFPA 72 requirements
- Just turn the test knob to identify contaminated alarms
- No additional equipment needed



8 ZERO FAULT PHOTOELECTRIC TECHNOLOGY

Available on 7000, 9000, 710CS/LS and 8000 Series

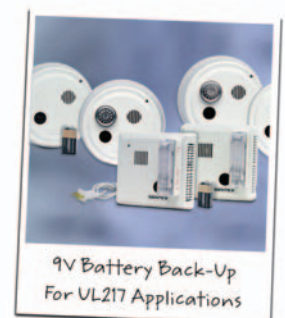
- RF Immune
- 5-to-1 signal-to-noise ratio reduces possibility of nuisance alarms
- Insect protection
- On-site maintenance washing program



9 POWERSURE BACKUP

Available on 9000 and 7109CS/LS Series

- Audible will sound and contacts will function on battery power
- Low battery notification
- Missing battery indicator
- Tandem lines will function on battery power
- Units will self restore once smoke clears



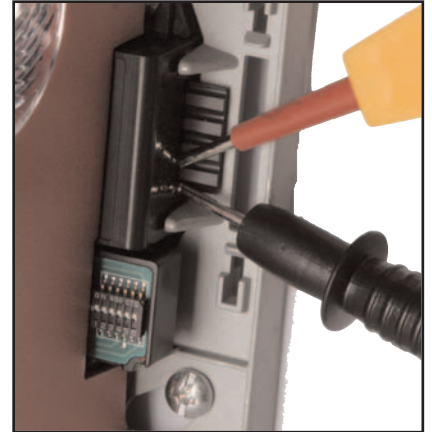
COMMANDER SERIES

Checkmate™

instant voltage **verification**

Introducing Checkmate™, available exclusively on all Super-Slide™ products. Checkmate™ allows the installer to calculate the voltage drop over the line and check it to the blueprint.

- Quick, easy terminal test port
- Insert probe on last signal to read current draw
- Verify against your blueprint
- Eliminates guess work
- Easy to check opens and ground faults



SUPER-SLIDE™ PRODUCTS SAVE 80% OR MORE ON INSTALLATION TIME WITH GENTEX COMMANDER SERIES.

COMMANDER¹

Models: ST, HS *



Lowest Current Draw Strobe and Horn/Strobe Signals for 24VDC

Fire Alarm Systems: The Commander¹ has separate horn and strobe capabilities to meet your specific requirements. Available in 15, 30, 60, 75, 110, and 15/75 fixed candela — plus the best looking signal profile on the market. Synchronize with the Gentex AVS44 synchronization module.



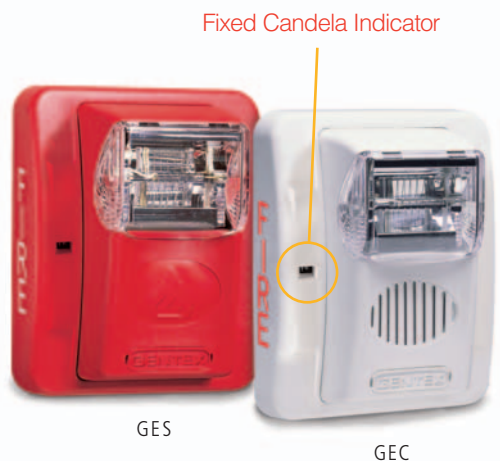
COMMANDER²

Models: GES, GEC *



24VDC Low Current Draw Strobe and Horn/Strobe:

This low frequency evacuation horn is wall-penetrating LOUD — up to 104 dBA. Available in 15, 30, 60, 75, 110, 177 and 15/75 fixed candela, Field selectable tones include high/low dBA and 2400 Hz broadband evacuation tone, chime tone or whoop. Choose strobe and horn/strobe models. Synchronize with Gentex AVS44 and AVSM synchronization modules.



* SEE BACK PAGE FOR MODEL NUMBER EXPLANATION

COMMANDER³

Models: GES3, GEC3 *



Wall Mount, Field Selectable Candela Strobe and Horn/Strobe:

The evacuation signal for all your needs in both 12VDC or 24VDC — tamperproof field selectable candela settings of 15, 30, 60, 75 and 110 (24VDC only). This signal is LOUD — up to 104 dBA. High/low dBA and 2400 Hz broadband evacuation tone, chime tone or whoop. Synchronize with Gentex AVS44 and AVSM synchronization modules.



COMMANDER⁴

Models: GCS, GCC *



Ceiling Mount, Field Selectable Candela Strobe and Horn/Strobe:

Sleek profile signal offered in 24VDC has tamperproof field selectable candela settings of 15, 30, 75, 95, 115 and 150. This signal is LOUD — up to 104 dBA. High/low dBA, 2400 Hz and 1500-3000 Hz broadband evacuation tone. Synchronize with Gentex AVS44 and AVSM synchronization modules.



Horn

Model: GEH *



Ceiling or Wall Mount, 12VDC or 24VDC, Horn:

Wall-penetrating LOUD — up to 104 dBA. High/low dBA and 2400 Hz broadband evacuation tone, chime tone or whoop. Use with GOE or GOELP enclosure for outdoor use. Synchronize with Gentex AVS44 and AVSM synchronization modules.



* SEE BACK PAGE FOR MODEL NUMBER EXPLANATION

CEILING/WALL SPEAKERS AND SIGNALS

Low Profile Ceiling Speaker

Models: SSPK24CLP, SSPKCLP

NEW SERIES!!

Low Profile, Ceiling Mount,

Selectable Candela Speaker and

Speaker/Strobe:

The SSPKCLP Series offer both evacuation signaling and visual alarms. The speaker/strobe has high output tamperproof candela selections of 15, 30, 75, 95, and 115. The SSPKCLP Series fits **into a 2 1/8 inch back box without an extension ring.** The SSPKCLP Series is provided with field selectable 25 or 70.7 VRMS and also field selectable powertaps of 1/8W - 4W. Synchronize with Gentex AVS44 and AVSM synchronization modules.



SSPK24CLP

SSPKCLP

Ceiling Speaker

Models: SSPKC24, SSPKC *

Ceiling Mount, Selectable Candela

Speaker and Speaker/Strobe:

The SSPKC Series offer both dependable evacuation signaling and visual alarms. The speaker/strobe is available in high output tamperproof candela selections of 15, 30, 75, 95, and 115. The SSPKC series is provided with field selectable 25 or 70.7 VRMS and also field selectable powertaps of 1/8W - 4W. Synchronize with Gentex AVS44 and AVSM synchronization modules.



SSPKC24

SSPKC

Wall Mount Speaker

Models: SSPK24, SSPK *

Wall Mount, Speaker and

Speaker/Strobe:

High output 15, 30, 60, 75, 110 and 15/75 fixed candela Xenon strobe and speaker with field selectable 25 VRMS or 70.7 VRMS and 1/8W - 4W power taps. Rotatable strobe **allows for 2 1/8" deep box installation.** Synchronize with Gentex AVS44 and AVSM synchronization modules.



SSPK24

SSPK

Gentex Color Codes

To help your selection from our growing product line, we're implementing a color-coded system in packaging, data sheets and marketing materials. Please refer to label on the top of the carton for specific model number. Some products have multiple applications.



Red
Signals



Green
Speakers



Amber
Emergency
Notification



Black
Smoke
Alarms



Blue
Weatherproof



Purple
Accessories

GX/GXS Series

Models: GX91, GX93, GXS *



Low current remote signals for 12VDC and 24VDC supervised systems:

The GX91 is available in continuous tone only. While the GX93 features Temporal 3 and continuous tone and can be synchronized with the Gentex synchronization Gentex AVS44 and AVSM synchronization modules. GXS is available in 120 VAC with 177 candela strobe to be used as a remote signal. All products can be flush mounted to a wall or ceiling.



GX5

GX93

GX91

Vibrating Alarm Bells

Models: GB10, GB6 *

Our polarized 24VDC and 120VAC bells utilize conventional two coil vibratory technology to produce a distinct 95dbA alarm. Choose 6" or 10" gong models; both can be mounted to standard 4" square electrical boxes or GBBB weatherproof backbox.



GB10

GB6

GBBB

EMERGENCY NOTIFICATION APPLIANCES (ENA)

Gentex signal performance - colored lenses

Blue, Red, Amber and Green — Let Gentex solve all of your ENA requirements with our new colored lenses. We are introducing blue, red, amber and green lenses better known as the BRAG color codes. Just simply add the letter B.R.A.G. to our already popular models.

Ceiling Speaker

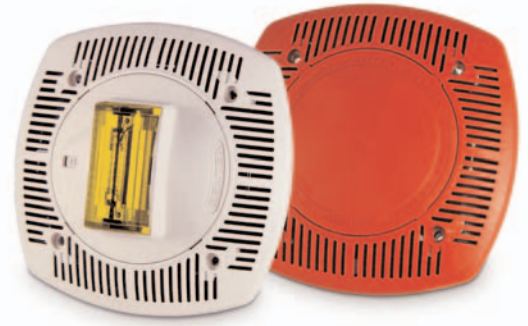
Models: SSKPCA, SSPKCLP



**NEW PRODUCT SERIES
COMING SOON!**

24VDC Ceiling Mount Emergency

Notification Speaker: Available with blue, red, amber or green lens. See SSPKCLP (page 5) for specifications.



SSKPCA

SSPKCLP

COMMANDER³

Models: GESR, GECG



24VDC Wall Mount Emergency Notification Horn and Horn/Strobe Combination:

Available with blue, red, amber or green lens. See Commander³ (page 4) for specifications.



GESR

GECG

COMMANDER⁴

Models: GCSB, GCSA



24VDC Ceiling Mount Emergency Notification Horn and Horn/Strobe Combination:

Available with blue, red, amber or green lens. See Commander⁴ (page 4) for specifications.



GCSB

GCSA

WEATHERPROOF SIGNALS

Housed in weatherproof enclosures

and back boxes

Gentex signaling appliances can withstand extreme temperature and humidity

environments, making them ideal for harsh outdoor applications. Excellent performance, NFPA code compliance, and ease of installation make Gentex the leader in the outdoor appliance field.

Weatherproof Surface and Electrical Box Mount

Models: GOE, GOELP *



Conventional and low profile outdoor enclosure provides a tight, weatherproof seal for the Commander² WGE Series and GEH horn. Universal mounting. Available with and without "FIRE" wording.



Weatherproof Electrical Box Mount

Models: WGES-LP, WGEC-LP



Includes the Gentex Commander² Evacuation Signal with a UL1638 listed 75 fixed candela strobe and a GOELP outdoor enclosure.



Weatherproof with Surface Mount Back Box

Models: WGES, WGEC *



Includes the Gentex Commander² Evacuation Signal (WGEC or WGES) with a fixed UL 1638 listed 75 fixed candela strobe and the Gentex GOE or GOELP outdoor enclosure. Synchronize with Gentex AVS44 and AVSM synchronization modules.



**GN-200·GN-203
GN-300·GN-303
Series**

**NEW PRODUCT SERIES
COMING SOON!**

**For 120VAC and 120VAC/9VDC
Residential and Commercial**

Residential: Assembled in USA. 120VAC photoelectric smoke alarm with 9VDC battery back-up (GN-300 Series) with push button testing. The GN-203 and GN-303 offers a Temporal 3 horn. UL 217 smoke alarm is listed for residential and commercial residential use.



GN-300 • GN-303

GN-200 • GN-203

**710CS/LS
7109CS/LS
713CS/LS
7139CS/LS
Series**



**Single or Multiple Station 120VAC
Smoke Alarm with Visual Signal:**

Assembled in USA. Designed to alert the hearing impaired. The portable LS models are equipped with a 9 foot line cord that lets you equip any room with a 177 Candela visual and 90 dBA audible signal. 713/CS/LS and 7139/CS/LS offer a Temporal 3 horn. Battery back up for audible signal. 7139 UL 217 listed and ADA compliant. The CSX models are used for remote annunciation of the strobe and can be activated from a field mounted relay.



710LS • 713LS

7109CS • 7139CS

**7000·7003
Series**



**For 120VAC and 220VAC Single or
Multiple Station:**

Assembled in USA. 120VAC photoelectric smoke alarm with patented 3-position test switch. Applications include residential and commercial residential occupancies. 7103 offers a temporal 3 horn. UL 217 smoke alarm is listed for residential and commercial residential use.



7100T • 7103T

7100 • 7103

PHOTOELECTRIC SMOKE ALARMS

The only photoelectric smoke alarm on the market
that includes an optional relay, on board.

**Optional Temporal 3 plus 3-Position Test Switch for
.88% and 3.45% Smoke Conditions to Meet Requirements**

9000•9003 Series



For 120VAC/9VDC and 220VAC/9VDC Single or Multiple

Station: Assembled in USA.

120VAC photoelectric smoke alarm with 9VDC battery back-up and patented 3-position test switch.

Applications include residential and commercial residential occupancies.

9123 offers a Temporal 3 horn. UL 217 smoke alarm is listed for residential and commercial residential use.



9120•9123

9120T•9123T

8000•8003 Series



For 24VDC and 120VAC Fire

Alarm Systems: Assembled in USA.

Engineered for commercial, industrial, institutional and multi-family housing applications.

Units have Form A/Form C relays. UL268 listed for releasing device service.

Options include: latching or self restoring circuits, thermals, continuous or temporal 3 sounder.



8100P•8103P

8100PH•8103PH

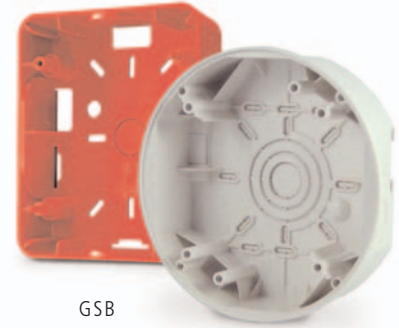
ACCESSORIES

Back Boxes

Models: **GSB, GCSB**



GSB is fully compatible with the Gentex wall mount A/V products and the GCSB fits ceiling A/V applications. Features 1/2" conduit knockouts with metal washer reinforcement and wire mold knockouts. Available in red or off-white textured finish. GCSB has pendent mount option.



GSB

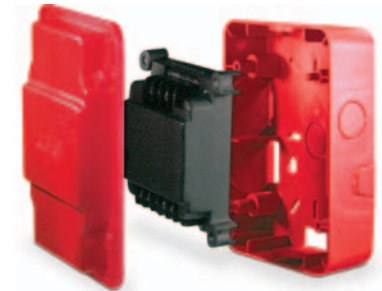
GCSB

Synchronization Module

Model: **AVSM**



The AVSM Series is designed to provide easy synchronization of multiple horns and/or strobes where required. The control module has the ability to mute the horns while the strobe continues to flash. Must use AVS44 for Commander¹ products and AVSM for 12VDC products.



AVSM

The following designations are used on Gentex audible and visual product numbers:

HS	Horn Strobe
ST	Strobe
GEC	Gentex Evacuation Combination
GES	Gentex Evacuation Strobe
GEH	Gentex Evacuation Horn
GEC3	Gentex Evacuation Combination 3rd Generation
GES3	Gentex Evacuation Strobe 3rd Generation
GCC	Gentex Evacuation Ceiling Combination
GCS	Gentex Evacuation Ceiling Strobe
SSPK	Speaker Only, Wall Mount
SSPK24	Speaker Strobe, Wall Mount
SSPKC	Speaker Only, Ceiling Mount
SSPK24C	Speaker Strobe, Ceiling Mount
SSPKCLP	Speaker Only, Ceiling Mount, Low Profile
SSPK24CLP	Speaker Strobe, Ceiling Mount, Low Profile
GOE	Gentex Outdoor Enclosure
GOELP	Gentex Outdoor Enclosure, Low Profile

Important Notice: These materials have been prepared by Gentex Corporation ("Gentex") for informational purposes only, are necessarily summary, and are not purported to serve as legal advice and should not be used as such. Gentex makes no representations and warranties, express or implied, that these materials are complete and accurate, up-to-date, or in compliance with all relevant local, state and federal laws, regulations and rules. The materials do not address all legal considerations as there is inevitable uncertainty regarding interpretation of laws, regulations and rules and the application of such laws, regulations and rules to particular fact patterns. Each person's activities can differently affect the obligations that exist under applicable laws, regulations or rules. Therefore, these materials should be used only for informational purposes and should not be used as a substitute for seeking professional legal advice. Gentex will not be responsible for any action or failure to act in reliance upon the information contained in this material.