



## Flanged Fittings and Flanges

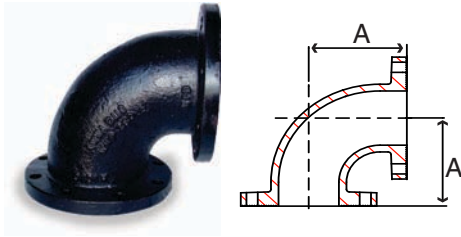
### Flanged Fittings Class 125 & 250 Specifications

- Flanged fittings UL Listed through 12"
- Grey iron castings conform to ASTM A126 and ASTM A48
- Flanged fitting dimensions conform to ASME B16.1 and ANSI/AWWA C110/A21.10
- Manufacturing facility is ISO 9001:2008
- Flanged fittings made of 150# ductile iron for sizes 6" and below
- Galvanizing available upon request

### Class 125 & 250 Cast Flanges Specifications

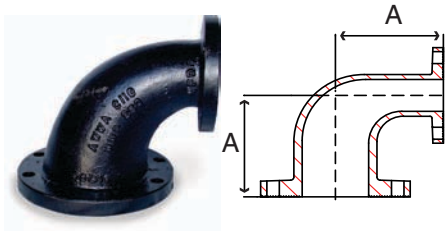
- Grey iron castings conform to ASTM A126 and ASTM A48
- Companion flange dimensions conform to ASME B16.1
- Hot-dipped galvanized flanges conform to ASTM A153
- Companion flanges threads conform to ASME B1.20.1
- Manufacturing facility is ISO 9001:2008

**Fig. 38E 1 – 90° Elbow**



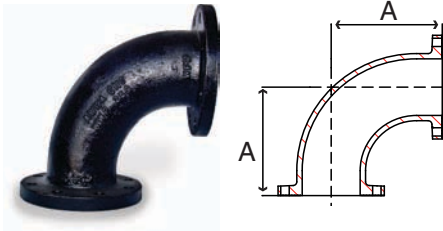
Size IN	Part Number	Materials	A IN	Weight LB
1-1/4	38E 1012D	150 lb. Ductile Iron	3.75	9
1-1/2	38E 1014D	150 lb. Ductile Iron	4.00	9
2	38E 1020D	150 lb. Ductile Iron	4.50	14
2-1/2	38E 1024D	150 lb. Ductile Iron	5.00	19
3	38E 1030D	150 lb. Ductile Iron	5.50	25
3-1/2	38E 1034D	150 lb. Ductile Iron	6.00	25
4	38E 1040D	150 lb. Ductile Iron	6.50	45
5	38E 1050D	150 lb. Ductile Iron	7.50	52
6	38E 1060D	150 lb. Ductile Iron	8.00	65
8	38E 1080	125 lb. Cast Iron	9.00	105
10	38E 1100	125 lb. Cast Iron	11.00	165
12	38E 1120	125 lb. Cast Iron	12.00	255
14	38E 1140	125 lb. Cast Iron	14.00	353
16	38E 1160	125 lb. Cast Iron	15.00	430
18	38E 1180	125 lb. Cast Iron	16.50	450
20	38E 1200	125 lb. Cast Iron	18.00	580
24	38E 1240	125 lb. Cast Iron	22.00	900

**Fig. 38RE1 – 90° Reducing Elbow**



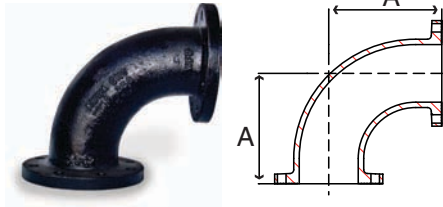
Size IN	Part Number	Materials	A IN	Weight LB
2 x 1-1/2	38RE1020014D	150 lb. Ductile Iron	4.50	22
3 x 1-1/2	38RE1030014D	150 lb. Ductile Iron	5.50	22
3 x 2	38RE1030020D	150 lb. Ductile Iron	5.50	22
3 x 2-1/2	38RE1030024D	150 lb. Ductile Iron	5.50	22
4 x 2	38RE1040020D	150 lb. Ductile Iron	6.50	29
4 x 2-1/2	38RE1040024D	150 lb. Ductile Iron	6.50	31
4 x 3	38RE1040030D	150 lb. Ductile Iron	6.50	29
5 x 2	38RE1050020D	150 lb. Ductile Iron	7.50	50
5 x 2-1/2	38RE1050024D	150 lb. Ductile Iron	7.50	50
5 x 4	38RE1050040D	150 lb. Ductile Iron	7.50	50
6 x 2	38RE1060020D	150 lb. Ductile Iron	8.00	42
6 x 2-1/2	38RE1060024D	150 lb. Ductile Iron	8.00	45
6 x 3	38RE1060030D	150 lb. Ductile Iron	8.00	50
6 x 4	38RE1060040D	150 lb. Ductile Iron	8.00	55
6 x 5	38RE1060050D	150 lb. Ductile Iron	8.00	65
8 x 4	38RE1080040	125 lb. Cast Iron	9.00	80
8 x 5	38RE1080050	125 lb. Cast Iron	9.00	85
8 x 6	38RE1080060	125 lb. Cast Iron	9.00	85
10 x 4	38RE1100040	125 lb. Cast Iron	11.00	110
10 x 6	38RE1100060	125 lb. Cast Iron	11.00	130
10 x 8	38RE1100080	125 lb. Cast Iron	11.00	150
12 x 6	38RE1120060	125 lb. Cast Iron	12.00	188
12 x 8	38RE1120080	125 lb. Cast Iron	12.00	185
12 x 10	38RE1120100	125 lb. Cast Iron	12.00	210
14 x 12	38RE1140120	125 lb. Cast Iron	14.00	275
16 x 12	38RE1160120	125 lb. Cast Iron	15.00	310

**Fig. 38LE1 – 90° Long Radius Elbow**



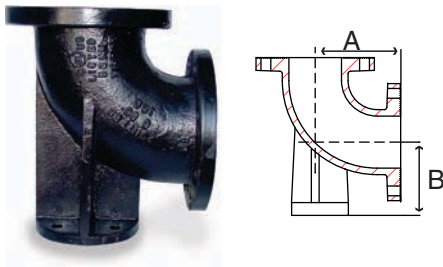
Size IN	Part Number	Materials	A IN	Weight LB
3	38LE1030D	150 lb. Ductile Iron	7.75	30
4	38LE1040D	150 lb. Ductile Iron	9.00	50
6	38LE1060D	150 lb. Ductile Iron	11.50	85
8	38LE1080	125 lb. Cast Iron	14.00	145
10	38LE1100	125 lb. Cast Iron	16.50	225
12	38LE1120	125 lb. Cast Iron	19.00	325
14	38LE1140	125 lb. Cast Iron	21.50	385
16	38LE1160	125 lb. Cast Iron	24.00	400
18	38LE1180	125 lb. Cast Iron	26.50	630
20	38LE1200	125 lb. Cast Iron	29.00	810
24	38LE1240	125 lb. Cast Iron	34.00	1,240

**Fig. 38LE1 – 90° Reducing Long Radius Elbow**



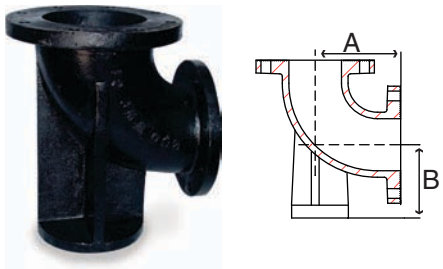
Size IN	Part Number	Materials	A IN	Weight LB
10 x 8	38LE1100080	125 lb. Cast Iron	16.50	185
12 x 10	38LE1120100	125 lb. Cast Iron	19.00	360

**Fig. 38BE1 – 90° Base Elbow**



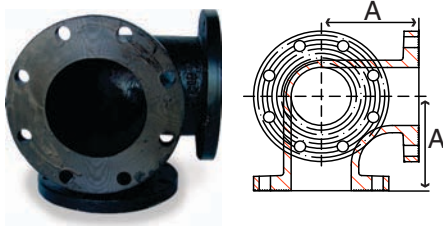
Size IN	Part Number	Materials	A IN	B IN	Weight LB
2	38BE1020D	150 lb. Ductile Iron	4.50	4.12	19
2-1/2	38BE1024D	150 lb. Ductile Iron	5.00	4.50	29
3	38BE1030D	150 lb. Ductile Iron	5.50	4.88	35
4	38BE1040D	150 lb. Ductile Iron	6.50	5.50	55
6	38BE1060D	150 lb. Ductile Iron	8.00	7.00	85
8	38BE1080	125 lb. Cast Iron	9.00	8.75	145
10	38BE1100	125 lb. Cast Iron	11.00	9.75	220
12	38BE1120	125 lb. Cast Iron	12.00	11.25	324
14	38BE1140	125 lb. Cast Iron	14.00	12.50	375
16	38BE1160	125 lb. Cast Iron	15.00	13.75	445

**Fig. 38BE1 – 90° Reducing Base Elbow**



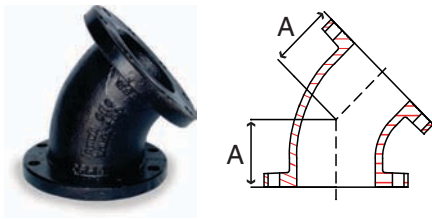
Size IN	Part Number	Materials	A IN	B IN	Weight LB
6 x 3	38BE1060030D	150 lb. Ductile Iron	8.00	7.00	74
6 x 4	38BE1060040D	150 lb. Ductile Iron	8.00	7.00	76
6 x 5	38BE1060050D	150 lb. Ductile Iron	8.00	7.00	84
8 x 6	38BE1080060	125 lb. Cast Iron	9.00	8.75	120

**Fig. 38OE1 – 90° Side Outlet Elbow**



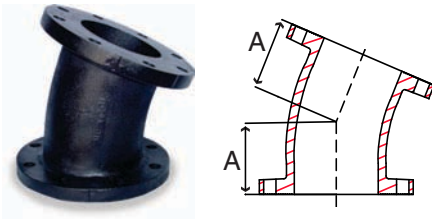
Size IN	Part Number	Materials	A IN	Weight LB
4	38OE1040D	150 lb. Ductile Iron	6.50	60
6	38OE1060D	150 lb. Ductile Iron	8.00	95

**Fig. 38F 1 – 45° Elbow**



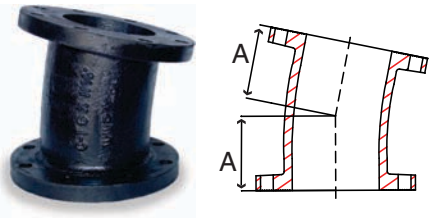
Size IN	Part Number	Materials	A IN	Weight LB
2	38F 1020D	150 lb. Ductile Iron	2.50	12
2-1/2	38F 1024D	150 lb. Ductile Iron	3.00	17
3	38F 1030D	150 lb. Ductile Iron	3.00	20
4	38F 1040D	150 lb. Ductile Iron	4.00	40
5	38F 1050D	150 lb. Ductile Iron	4.50	45
6	38F 1060D	150 lb. Ductile Iron	5.00	55
8	38F 1080	125 lb. Cast Iron	5.50	90
10	38F 1100	125 lb. Cast Iron	6.50	135
12	38F 1120	125 lb. Cast Iron	7.50	220
14	38F 1140	125 lb. Cast Iron	7.50	220
16	38F 1160	125 lb. Cast Iron	8.00	280
18	38F 1180	125 lb. Cast Iron	8.50	325
20	38F 1200	125 lb. Cast Iron	9.50	430
24	38F 1240	125 lb. Cast Iron	11.00	630

**Fig. 38TT1 – 22-1/2° Elbow**



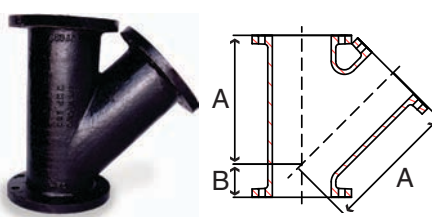
Size IN	Part Number	Materials	A IN	Weight LB
4	38TT1040D	150 lb. Ductile Iron	4.00	40
6	38TT1060D	150 lb. Ductile Iron	5.00	55
8	38TT1080	125 lb. Cast Iron	5.50	90
10	38TT1100	125 lb. Cast Iron	6.50	130
12	38TT1120	125 lb. Cast Iron	7.50	195

**Fig. 38EL1 – 11-1/4° Elbow**



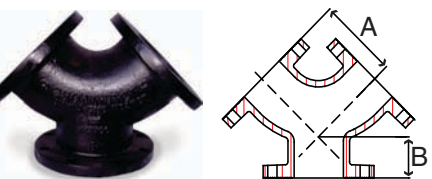
Size IN	Part Number	Materials	A IN	Weight LB
3	38EL1030D	150 lb. Ductile Iron	3.00	20
4	38EL1040D	150 lb. Ductile Iron	4.00	40
6	38EL1060D	150 lb. Ductile Iron	5.00	55
8	38EL1080	125 lb. Cast Iron	5.50	90
10	38EL1100	125 lb. Cast Iron	6.50	135
12	38EL1120	125 lb. Cast Iron	7.50	205

**Fig. 38LT1 – Lateral**



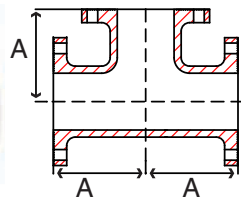
Size IN	Part Number	Materials	A IN	B IN	Weight LB
3	38LT1030D	150 lb. Ductile Iron	10.00	3.00	45
4	38LT1040D	150 lb. Ductile Iron	12.00	3.00	75
6	38LT1060D	150 lb. Ductile Iron	14.50	3.50	120
8	38LT1080	125 lb. Cast Iron	17.50	4.50	200
10	38LT1100	125 lb. Cast Iron	20.50	5.00	335
12	38LT1120	125 lb. Cast Iron	24.50	5.50	515
16	38LT1160	125 lb. Cast Iron	30.00	6.50	805

**Fig. 38Y 1 – Wye**



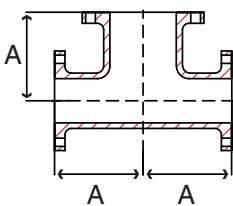
Size IN	Part Number	Materials	A IN	B IN	Weight LB
4	38Y 1040D	150 lb. Ductile Iron	6.50	3.00	66
6	38Y 1060D	150 lb. Ductile Iron	8.00	3.50	101
12	38Y 1120	125 lb. Cast Iron	12.00	5.50	265

FLANGED



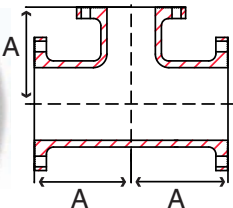
**Fig. 38T 1 – Tee**

Size IN	Part Number	Materials	A IN	Weight LB
2	38T 1020D	150 lb. Ductile Iron	4.50	20
2-1/2	38T 1024D	150 lb. Ductile Iron	5.00	30
3	38T 1030D	150 lb. Ductile Iron	5.50	40
4	38T 1040D	150 lb. Ductile Iron	6.50	65
5	38T 1050D	150 lb. Ductile Iron	7.50	85
6	38T 1060D	150 lb. Ductile Iron	8.00	95
8	38T 1080	125 lb. Cast Iron	9.00	155
10	38T 1100	125 lb. Cast Iron	11.00	270
12	38T 1120	125 lb. Cast Iron	12.00	385
14	38T 1140	125 lb. Cast Iron	14.00	435
16	38T 1160	125 lb. Cast Iron	15.00	550
18	38T 1180	125 lb. Cast Iron	16.50	665
20	38T 1200	125 lb. Cast Iron	18.00	855
24	38T 1240	125 lb. Cast Iron	22.00	1,330



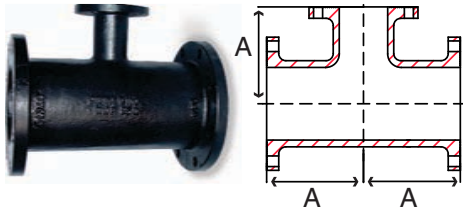
**Fig. 38BT1 – Bull Head Tee**

Size IN	Part Number	Materials	A IN	Weight LB
4 x 6	38BT1040060D	150 lb. Ductile Iron	8.00	88
6 x 8	38BT1060080	125 lb. Cast Iron	9.00	142
8 x 10	38BT1080100	125 lb. Cast Iron	11.00	240



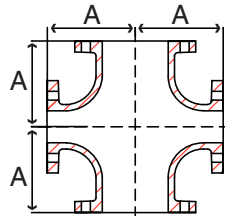
**Fig. 38RT1 – Reducing Tee**

Size IN	Part Number	Materials	A IN	Weight LB
2 x 1-1/2	38RT1020014D	150 lb. Ductile Iron	4.50	29
2-1/2 x 1	38RT1024010D	150 lb. Ductile Iron	5.00	29
2-1/2 x 1-1/2	38RT1024014D	150 lb. Ductile Iron	5.00	29
2-1/2 x 2 x 2	38RT1024020020D	150 lb. Ductile Iron	5.00	29
2-1/2 x 2	38RT1024020D	150 lb. Ductile Iron	5.00	50
3 x 1	38RT1030010D	150 lb. Ductile Iron	5.50	25
3 x 1-1/2	38RT1030014D	150 lb. Ductile Iron	5.50	38
3 x 2	38RT1030020D	150 lb. Ductile Iron	5.50	35
3 x 2-1/2	38RT1030024D	150 lb. Ductile Iron	5.50	34
4 x 1-1/2	38RT1040014D	150 lb. Ductile Iron	6.50	55
4 x 2 x 4	38RT1040020040D	150 lb. Ductile Iron	6.50	50
4 x 2	38RT1040020D	150 lb. Ductile Iron	6.50	50
4 x 2-1/2	38RT1040024D	150 lb. Ductile Iron	6.50	55
4 x 3	38RT1040030D	150 lb. Ductile Iron	6.50	60
4 x 3-1/2	38RT1040034D	150 lb. Ductile Iron	6.50	55
5 x 2	38RT1050020D	150 lb. Ductile Iron	7.50	85
5 x 2-1/2	38RT1050024D	150 lb. Ductile Iron	7.50	85
5 x 3	38RT1050030D	150 lb. Ductile Iron	7.50	85
5 x 3-1/2	38RT1050034D	150 lb. Ductile Iron	7.50	85
5 x 4 x 4	38RT1050040040D	150 lb. Ductile Iron	7.50	80
5 x 4	38RT1050040D	150 lb. Ductile Iron	7.50	85



**Fig. 38RT1 – Reducing Tee cont.**

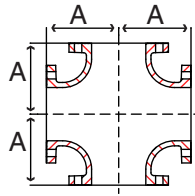
Size IN	Part Number	Materials	A IN	Weight LB
6 x 2	38RT1060020D	150 lb. Ductile Iron	8.00	85
6 x 2-1/2	38RT1060024D	150 lb. Ductile Iron	8.00	90
6 x 3 x 3	38RT1060030030D	150 lb. Ductile Iron	8.00	85
6 x 3 x 5	38RT1060030050D	150 lb. Ductile Iron	8.00	85
6 x 3	38RT1060030D	150 lb. Ductile Iron	8.00	85
6 x 4 x 4	38RT1060040040D	150 lb. Ductile Iron	8.00	90
6 x 4 x 5	38RT1060040050D	150 lb. Ductile Iron	8.00	85
6 x 4 x 6	38RT1060040060D	150 lb. Ductile Iron	8.00	95
6 x 4	38RT1060040D	150 lb. Ductile Iron	8.00	90
6 x 5 x 3	38RT1060050030D	150 lb. Ductile Iron	8.00	85
6 x 5 x 5	38RT1060050050D	150 lb. Ductile Iron	8.00	85
6 x 5 x 6	38RT1060050060D	150 lb. Ductile Iron	8.00	105
6 x 5	38RT1060050D	150 lb. Ductile Iron	8.00	110
8 x 2-1/2	38RT1080024	125 lb. Cast Iron	9.00	120
8 x 3	38RT1080030	125 lb. Cast Iron	9.00	135
8 x 4	38RT1080040	125 lb. Cast Iron	9.00	135
8 x 4 x 8	38RT1080040080	125 lb. Cast Iron	9.00	140
8 x 5	38RT1080050	125 lb. Cast Iron	9.00	149
8 x 6	38RT1080060	125 lb. Cast Iron	9.00	145
8 x 6 x 6	38RT1080060060	125 lb. Cast Iron	9.00	145
8 x 6 x 8	38RT1080060080	125 lb. Cast Iron	9.00	160
10 x 3	38RT1100030	125 lb. Cast Iron	11.00	210
10 x 4	38RT1100040	125 lb. Cast Iron	11.00	202
10 x 6	38RT1100060	125 lb. Cast Iron	11.00	215
10 x 8	38RT1100080	125 lb. Cast Iron	11.00	225
10 x 8 x 8	38RT1100080080	125 lb. Cast Iron	11.00	240
10 x 8 x 10	38RT1100080100	125 lb. Cast Iron	11.00	262
10 x 10	38RT1120100	125 lb. Cast Iron	11.00	360
12 x 4	38RT1120040	125 lb. Cast Iron	12.00	290
12 x 5	38RT1120050	125 lb. Cast Iron	12.00	310
12 x 6	38RT1120060	125 lb. Cast Iron	12.00	295
12 x 8	38RT1120080	125 lb. Cast Iron	12.00	310
14 x 4	38RT1140040	125 lb. Cast Iron	14.00	410
14 x 6	38RT1140060	125 lb. Cast Iron	14.00	375
14 x 8	38RT1140080	125 lb. Cast Iron	14.00	390
14 x 10	38RT1140100	125 lb. Cast Iron	14.00	400
14 x 12	38RT1140120	125 lb. Cast Iron	14.00	425
16 x 4	38RT1160040	125 lb. Cast Iron	15.00	230
16 x 8	38RT1160080	125 lb. Cast Iron	15.00	475
16 x 10	38RT1160100	125 lb. Cast Iron	15.00	495
16 x 12	38RT1160120	125 lb. Cast Iron	15.00	520
16 x 14	38RT1160140	125 lb. Cast Iron	15.00	530
18 x 6	38RT1180060	125 lb. Cast Iron	13.00	480
18 x 8	38RT1180080	125 lb. Cast Iron	13.00	495
18 x 12	38RT1180120	125 lb. Cast Iron	13.00	535
20 x 6	38RT1200060	125 lb. Cast Iron	14.00	610
20 x 10	38RT1200100	125 lb. Cast Iron	14.00	635



**Fig. 38RX1 – Reducing Cross**

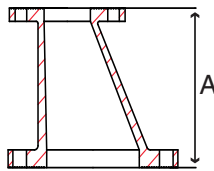
Size IN	Part Number	Materials	A IN	Weight LB
6 x 4	38RX1060040D	150 lb. Ductile Iron	8.00	110
6 x 5	38RX1060050D	150 lb. Ductile Iron	8.00	110
8 x 4	38RX1080040	125 lb. Cast Iron	9.00	155
8 x 6	38RX1080060	125 lb. Cast Iron	9.00	165
10 x 4	38RX1100040	125 lb. Cast Iron	11.00	220
10 x 6	38RX1100060	125 lb. Cast Iron	11.00	240
10 x 8	38RX1100080	125 lb. Cast Iron	11.00	265
12 x 4	38RX1120040	125 lb. Cast Iron	12.00	310
12 x 6	38RX1120060	125 lb. Cast Iron	12.00	320
12 x 8	38RX1120080	125 lb. Cast Iron	12.00	345
12 x 10	38RX1120100	125 lb. Cast Iron	12.00	415
14 x 6	38RX1140060	125 lb. Cast Iron	14.00	425
14 x 8	38RX1140080	125 lb. Cast Iron	14.00	425
14 x 10	38RX1140100	125 lb. Cast Iron	14.00	460
14 x 12	38RX1140120	125 lb. Cast Iron	14.00	505
16 x 6	38RX1160060	125 lb. Cast Iron	15.00	490
16 x 8	38RX1160080	125 lb. Cast Iron	15.00	520
16 x 10	38RX1160100	125 lb. Cast Iron	15.00	555
16 x 12	38RX1160120	125 lb. Cast Iron	15.00	605
16 x 14	38RX1160140	125 lb. Cast Iron	15.00	620
18 x 6	38RX1180060	125 lb. Cast Iron	13.00	610
18 x 8	38RX1180080	125 lb. Cast Iron	13.00	610
18 x 10	38RX1180100	125 lb. Cast Iron	13.00	560
18 x 12	38RX1180120	125 lb. Cast Iron	13.00	610
18 x 14	38RX1180140	125 lb. Cast Iron	16.50	680
18 x 16	38RX1180160	125 lb. Cast Iron	16.50	700
20 x 6	38RX1200060	125 lb. Cast Iron	14.00	745
20 x 8	38RX1200080	125 lb. Cast Iron	14.00	760
20 x 10	38RX1200100	125 lb. Cast Iron	14.00	685
20 x 12	38RX1200120	125 lb. Cast Iron	14.00	735
20 x 14	38RX1200140	125 lb. Cast Iron	14.00	745
20 x 16	38RX1200160	125 lb. Cast Iron	18.00	915
20 x 18	38RX1200180	125 lb. Cast Iron	18.00	945
24 x 10	38RX1240100	125 lb. Cast Iron	15.00	895
24 x 12	38RX1240120	125 lb. Cast Iron	15.00	960
24 x 18	38RX1240180	125 lb. Cast Iron	22.00	1365





**Fig. 38X 1 – Cross**

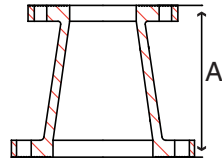
Size IN	Part Number	Materials	A IN	Weight LB
2-1/2	38X 1024D	150 lb. Ductile Iron	5.00	37
3	38X 1030D	150 lb. Ductile Iron	5.50	50
4	38X 1040D	150 lb. Ductile Iron	6.50	80
6	38X 1060D	150 lb. Ductile Iron	8.00	120
8	38X 1080	125 lb. Cast Iron	9.00	195
10	38X 1100	125 lb. Cast Iron	11.00	330
12	38X 1120	125 lb. Cast Iron	12.00	460
14	38X 1140	125 lb. Cast Iron	14.00	530
16	38X 1160	125 lb. Cast Iron	15.00	665
18	38X 1180	125 lb. Cast Iron	16.50	795
20	38X 1200	125 lb. Cast Iron	18.00	1,001
24	38X 1240	125 lb. Cast Iron	22.00	1,570



**Fig. 38ER1 – Eccentric Reducer**

Size IN	Part Number	Materials	A IN	Weight LB
3 x 2	38ER1030020D	150 lb. Ductile Iron	6.00	16
3 x 2-1/2	38ER1030024D	150 lb. Ductile Iron	6.00	20
4 x 2	38ER1040020D	150 lb. Ductile Iron	7.00	25
4 x 2-1/2	38ER1040024D	150 lb. Ductile Iron	7.00	28
4 x 3	38ER1040030D	150 lb. Ductile Iron	7.00	30
5 x 2-1/2	38ER1050024D	150 lb. Ductile Iron	8.00	35
5 x 3	38ER1050030D	150 lb. Ductile Iron	8.00	35
5 x 4	38ER1050040D	150 lb. Ductile Iron	8.00	39
6 x 2	38ER1060020D	150 lb. Ductile Iron	9.00	35
6 x 2-1/2	38ER1060024D	150 lb. Ductile Iron	9.00	38
6 x 3	38ER1060030D	150 lb. Ductile Iron	9.00	40
6 x 4	38ER1060040D	150 lb. Ductile Iron	9.00	45
6 x 5	38ER1060050D	150 lb. Ductile Iron	9.00	50
8 x 4	38ER1080040	125 lb. Cast Iron	11.00	65
8 x 5	38ER1080050	125 lb. Cast Iron	11.00	70
8 x 6	38ER1080060	125 lb. Cast Iron	11.00	75
10 x 4	38ER1100040	125 lb. Cast Iron	12.00	85
10 x 6	38ER1100060	125 lb. Cast Iron	12.00	90
10 x 8	38ER1100080	125 lb. Cast Iron	12.00	110
12 x 6	38ER1120060	125 lb. Cast Iron	14.00	130
12 x 8	38ER1120080	125 lb. Cast Iron	14.00	150
12 x 10	38ER1120100	125 lb. Cast Iron	14.00	170
14 x 10	38ER1140100	125 lb. Cast Iron	16.00	190
14 x 12	38ER1140120	125 lb. Cast Iron	16.00	220
16 x 12	38ER1160120	125 lb. Cast Iron	18.00	285
20 x 14	38ER1200140	125 lb. Cast Iron	20.00	355

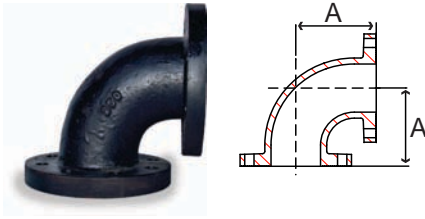
**Fig. 38CR1 – Concentric Reducer**



Size IN	Part Number	Materials	A IN	Weight LB
2 x 1-1/2	38CR1020014D	125 lb. Ductile Iron	5.00	12
2-1/2 x 2	38CR1024020D	150 lb. Ductile Iron	5.50	14
3 x 1-1/2	38CR1030014D	150 lb. Ductile Iron	6.00	15
3 x 2	38CR1030020D	150 lb. Ductile Iron	6.00	16
3 x 2-1/2	38CR1030024D	150 lb. Ductile Iron	6.00	20
4 x 2	38CR1040020D	150 lb. Ductile Iron	7.00	25
4 x 2-1/2	38CR1040024D	150 lb. Ductile Iron	7.00	28
4 x 3	38CR1040030D	150 lb. Ductile Iron	7.00	30
5 x 2	38CR1050020D	150 lb. Ductile Iron	8.00	26
5 x 2-1/2	38CR1050024D	150 lb. Ductile Iron	8.00	31
5 x 3	38CR1050030D	150 lb. Ductile Iron	8.00	32
5 x 3-1/2	38CR1050034D	150 lb. Ductile Iron	8.00	32
5 x 4	38CR1050040D	150 lb. Ductile Iron	8.00	39
6 x 1-1/2	38CR1060014D	150 lb. Ductile Iron	9.00	34
6 x 2	38CR1060020D	150 lb. Ductile Iron	9.00	34
6 x 2-1/2	38CR1060024D	150 lb. Ductile Iron	9.00	38
6 x 3	38CR1060030D	150 lb. Ductile Iron	9.00	40
6 x 4	38CR1060040D	150 lb. Ductile Iron	9.00	45
6 x 5	38CR1060050D	150 lb. Ductile Iron	9.00	50
8 x 3	38CR1080030	125 lb. Cast Iron	11.00	60
8 x 4	38CR1080040	125 lb. Cast Iron	11.00	65
8 x 5	38CR1080050	125 lb. Cast Iron	11.00	70
8 x 6	38CR1080060	125 lb. Cast Iron	11.00	75
10 x 3	38CR1100030	125 lb. Cast Iron	12.00	85
10 x 4	38CR1100040	125 lb. Cast Iron	12.00	85
10 x 6	38CR1100060	125 lb. Cast Iron	12.00	93
10 x 8	38CR1100080	125 lb. Cast Iron	12.00	109
12 x 4	38CR1120040	125 lb. Cast Iron	14.00	130
12 x 6	38CR1120060	125 lb. Cast Iron	14.00	130
12 x 8	38CR1120080	125 lb. Cast Iron	14.00	151
12 x 10	38CR1120100	125 lb. Cast Iron	14.00	170
14 x 6	38CR1140060	125 lb. Cast Iron	16.00	185
14 x 8	38CR1140080	125 lb. Cast Iron	16.00	175
14 x 10	38CR1140100	125 lb. Cast Iron	16.00	194
14 x 12	38CR1140120	125 lb. Cast Iron	16.00	223
16 x 6	38CR1160060	125 lb. Cast Iron	18.00	190
16 x 8	38CR1160080	125 lb. Cast Iron	18.00	210
16 x 10	38CR1160100	125 lb. Cast Iron	18.00	258
16 x 12	38CR1160120	125 lb. Cast Iron	18.00	310
16 x 14	38CR1160140	125 lb. Cast Iron	18.00	279
18 x 6	38CR1180060	125 lb. Cast Iron	19.00	195
18 x 8	38CR1180080	125 lb. Cast Iron	19.00	240
18 x 10	38CR1180100	125 lb. Cast Iron	19.00	265
18 x 12	38CR1180120	125 lb. Cast Iron	19.00	295
18 x 14	38CR1180140	125 lb. Cast Iron	19.00	310
18 x 16	38CR1180160	125 lb. Cast Iron	19.00	340
20 x 6	38CR1200060	125 lb. Cast Iron	20.00	345
20 x 8	38CR1200080	125 lb. Cast Iron	20.00	345
20 x 10	38CR1200100	125 lb. Cast Iron	20.00	345
20 x 12	38CR1200120	125 lb. Cast Iron	20.00	345
20 x 14	38CR1200140	125 lb. Cast Iron	20.00	355
20 x 16	38CR1200160	125 lb. Cast Iron	20.00	390
20 x 18	38CR1200180	125 lb. Cast Iron	20.00	410
24 x 8	38CR1240080	125 lb. Cast Iron	24.00	420
24 x 10	38CR1240100	125 lb. Cast Iron	24.00	460
24 x 12	38CR1240120	125 lb. Cast Iron	24.00	480
24 x 14	38CR1240140	125 lb. Cast Iron	24.00	490
24 x 16	38CR1240160	125 lb. Cast Iron	24.00	525
24 x 18	38CR1240180	125 lb. Cast Iron	24.00	550
24 x 20	38CR1240200	125 lb. Cast Iron	24.00	590

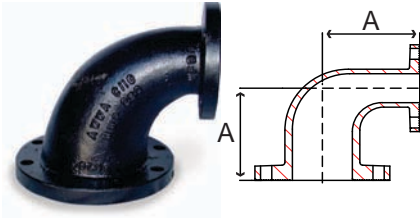
FLANGED

**Fig. 38E 2 – 90° Elbow**



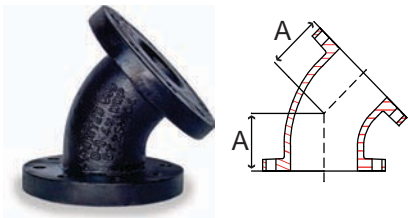
Size IN	Part Number	Materials	A IN	Weight LB
3	38E 2030	250 lb. Cast Iron	6.00	40
4	38E 2040	250 lb. Cast Iron	7.00	65
6	38E 2060	250 lb. Cast Iron	8.50	105
8	38E 2080	250 lb. Cast Iron	10.00	185
10	38E 2100	250 lb. Cast Iron	11.50	296
12	38E 2120	250 lb. Cast Iron	13.00	410

**Fig. 38RE2 – 90° Reducing Elbow**



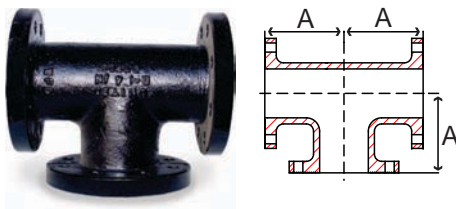
Size IN	Part Number	Materials	A IN	Weight LB
3 x 2-1/2	38RE2030024	250 lb. Cast Iron	6.00	35
4 x 2-1/2	38RE2040024	250 lb. Cast Iron	7.00	48
6 x 4	38RE2060040	250 lb. Cast Iron	8.50	95
8 x 6	38RE2080060	250 lb. Cast Iron	10.00	161
10 x 8	38RE2100080	250 lb. Cast Iron	11.50	240

**Fig. 38F 2 – 45° Elbow**



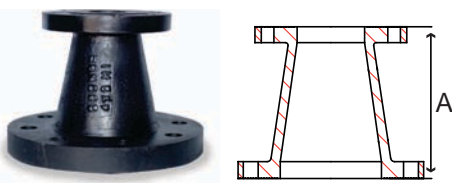
Size IN	Part Number	Materials	A IN	Weight LB
3	38F 2030	250 lb. Cast Iron	3.50	35
4	38F 2040	250 lb. Cast Iron	4.50	58
6	38F 2060	250 lb. Cast Iron	5.50	103
8	38F 2080	250 lb. Cast Iron	6.00	158

**Fig. 38T 2 – Tee**

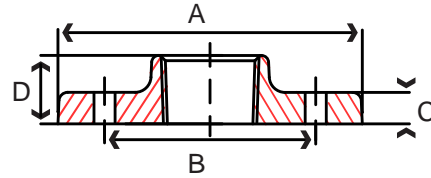


Size IN	Part Number	Materials	A IN	Weight LB
2-1/2	38T 2024	250 lb. Cast Iron	5.50	46
3	38T 2030	250 lb. Cast Iron	6.00	58
4	38T 2040	250 lb. Cast Iron	7.00	99
5	38T 2050	250 lb. Cast Iron	8.00	135
6	38T 2060	250 lb. Cast Iron	8.50	180
8	38T 2080	250 lb. Cast Iron	10.00	280
10	38T 2100	250 lb. Cast Iron	11.50	430
12	38T 2120	250 lb. Cast Iron	13.00	620

**Fig. 38CR2 – Concentric Reducer**

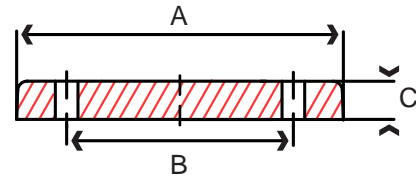


Size IN	Part Number	Materials	A IN	Weight LB
3 x 2	38CR2030020	250 lb. Cast Iron	6.00	25
3 x 2-1/2	38CR2030024	250 lb. Cast Iron	6.00	29
4 x 2	38CR2040020	250 lb. Cast Iron	7.00	36
4 x 3	38CR2040030	250 lb. Cast Iron	7.00	45
6 x 4	38CR2060040	250 lb. Cast Iron	9.00	77
6 x 5	38CR2060050	250 lb. Cast Iron	9.00	85
8 x 6	38CR2080060	250 lb. Cast Iron	11.00	130
10 x 8	38CR2100080	250 lb. Cast Iron	12.00	190
12 x 10	38CR2120100	250 lb. Cast Iron	14.00	268



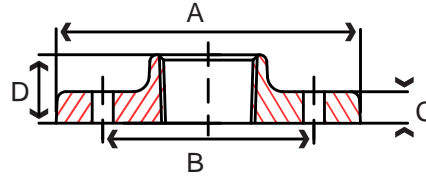
**Fig. 17TH1 & 18TH1 – 125 lb. Threaded Companion Flange**

Size IN	Part Number		A IN	B IN	C IN	D IN	Bolt Hole Size	Number of Bolt Holes	Weight LB
	Black	Galvanized							
1/2	17TH1004	18TH1004	3.50	2.38	0.50	0.75	5/8	4	1
3/4	17TH1006	18TH1006	3.89	2.75	0.50	0.75	5/8	4	1
1	17TH1010	18TH1010	4.25	3.12	0.44	0.75	5/8	4	1
1-1/4	17TH1012	18TH1012	4.62	3.50	0.50	0.81	5/8	4	2
1-1/2	17TH1014	18TH1014	5.00	3.88	0.56	0.88	5/8	4	3
2	17TH1020	18TH1020	6.00	4.75	0.62	1.00	3/4	4	4
2-1/2	17TH1024	18TH1024	7.00	5.50	0.69	1.12	3/4	4	6
3	17TH1030	18TH1030	7.50	6.00	0.75	1.19	3/4	4	8
4	17TH1040	18TH1040	9.00	7.50	0.94	1.31	3/4	8	12
5	17TH1050	18TH1050	10.00	8.50	0.94	1.44	7/8	8	14
6	17TH1060	18TH1060	11.00	9.50	1.00	1.56	7/8	8	16
8	17TH1080	18TH1080	13.50	11.75	1.12	1.75	7/8	8	28
10	17TH1100	18TH1100	16.00	14.25	1.19	1.94	1	12	38
12	17TH1120	18TH1120	19.00	17.00	1.25	2.19	1	12	55



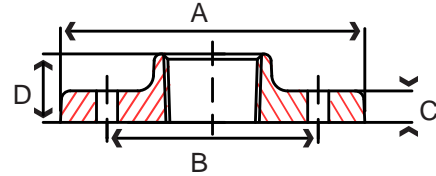
**Fig. 17BL1 & 18TH1 – 125 lb. Blind Flange**

Size IN	Part Number		A IN	B IN	C IN	Bolt Hole Size	Number of Bolt Holes	Weight LB
	Black	Galvanized						
1	17BL1010	18BL1010	4.25	3.12	0.44	5/8	4	2
1-1/4	17BL1012	18BL1012	4.62	3.50	0.50	5/8	4	2
1-1/2	17BL1014	18BL1014	5.00	3.88	0.56	5/8	4	4
2	17BL1020	18BL1020	6.00	4.75	0.62	3/4	4	5
2-1/2	17BL1024	18BL1024	7.00	5.50	0.69	3/4	4	7
3	17BL1030	18BL1030	7.50	6.00	0.75	3/4	4	9
3-1/2	17BL1034	18BL1034	8.50	7.00	0.81	3/4	8	14
4	17BL1040	18BL1040	9.00	7.50	0.94	3/4	8	15
5	17BL1050	18BL1050	10.00	8.50	0.94	7/8	8	18
6	17BL1060	18BL1060	11.00	9.50	1.00	7/8	8	23
8	17BL1080	18BL1080	13.50	11.75	1.12	7/8	8	37
10	17BL1100	18BL1100	16.00	14.25	1.19	1	12	59
12	17BL1120	18BL1120	19.00	17.00	1.25	1	12	89
14	17BL1140	-	21.00	18.75	1.38	1-1/8	12	101
16	17BL1160	-	23.50	21.25	1.44	1-1/8	16	152
18	17BL1180	-	25.00	22.75	1.56	1-1/4	16	172
20	17BL1200	-	27.50	25.00	1.69	1-1/4	20	226
24	17BL1240	-	32.00	29.50	1.88	1-3/8	20	355
30	17BL1300	-	38.75	36.00	2.12	1-3/8	28	425



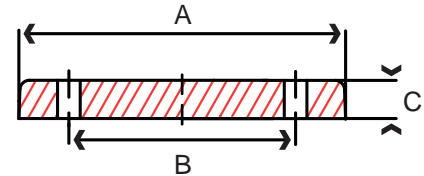
**Fig. 17RT1 & 18RT1 – 125 lb. Reducing Companion Flange**

Size IN	Part Number		A IN	B IN	C IN	D IN	Bolt Hole Size	Number of Bolt Holes	Weight LB
	Black	Galvanized							
1 x 4-5/8	17RT1010045	-	4.62	3.50	0.50	0.81	5/8	4	3
1 x 5	17RT1010050	-	5.00	3.88	0.56	0.88	5/8	4	3
1 x 7	17RT1010070	-	7.00	5.50	0.69	1.12	3/4	4	7
1-1/4 x 6	17RT1012060	-	6.00	6.00	0.75	1.00	3/4	4	4
1-1/2 x 6	17RT1014060	18RT1014060	6.00	6.00	0.75	1.00	3/4	4	4
1-1/2 x 7	17RT1014070	18RT1014070	7.00	5.50	0.69	1.12	3/4	4	6
1-1/2 x 7-1/2	17RT1014074	-	7.50	6.00	0.75	1.19	3/4	4	9
1-1/2 x 9	17RT1014090	-	9.00	7.50	0.94	1.31	3/4	8	15
1-1/2 x 10	17RT1014100	-	10.00	8.50	0.94	1.44	7/8	8	19
1-1/2 x 11	17RT1014110	-	11.00	9.50	1.00	1.56	7/8	8	24
2 x 7	17RT1020070	18RT1020070	7.00	5.50	0.69	1.12	3/4	4	7
2 x 7-1/2	17RT1020074	18RT1020074	7.50	6.00	0.75	1.19	3/4	4	8
2 x 8-1/2	17RT1020084	-	8.50	7.00	0.81	1.25	3/4	8	10
2 x 9	17RT1020090	18RT1020090	9.00	7.50	0.94	1.31	3/4	8	16
2 x 10	17RT1020100	-	10.00	8.50	0.94	1.44	7/8	8	17
2 x 11	17RT1020110	18RT1020110	11.00	9.50	1.00	1.56	7/8	8	23
2 x 13-1/2	17RT1020134	-	13.50	11.75	1.12	1.75	7/8	8	44
2 x 16	17RT1020160	-	16.00	14.25	1.19	1.94	1	12	60
2 x 19	17RT1020190	-	19.00	17.00	1.25	2.19	1	12	87
2-1/2 x 7-1/2	17RT1024074	18RT1024074	7.50	6.00	0.75	1.19	3/4	4	8
2-1/2 x 9	17RT1024090	18RT1024090	9.00	7.50	0.94	1.31	3/4	8	13
2-1/2 x 10	17RT1024100	-	10.00	8.50	0.94	1.44	7/8	8	18
2-1/2 x 11	17RT1024110	18RT1024110	11.00	9.50	1.00	1.56	7/8	8	22
2-1/2 x 13-1/2	17RT1024134	-	13.50	11.75	1.12	1.75	7/8	8	40
3 x 9	17RT1030090	18RT1030090	9.00	7.50	0.94	1.31	3/4	8	13
3 x 10	17RT1030100	-	10.00	8.50	0.94	1.44	7/8	8	17
3 x 11	17RT1030110	-	11.00	9.50	1.00	1.56	7/8	8	21
3 x 13-1/2	17RT1030134	-	13.50	11.75	1.12	1.75	7/8	8	37
3-1/2 x 11	17RT1034110	-	11.00	9.50	1.00	1.56	7/8	8	22
3-1/2 x 13-1/2	17RT1034134	-	13.50	11.75	1.12	1.75	7/8	8	39
4 x 10	17RT1040100	18RT1040100	10.00	8.50	0.94	1.44	7/8	8	14
4 x 11	17RT1040110	18RT1040110	11.00	9.50	1.00	1.56	7/8	8	21
4 x 13-1/2	17RT1040134	18RT1040134	13.50	11.75	1.12	1.75	7/8	8	35
5 x 11	17RT1050110	18RT1050110	11.00	9.50	1.00	1.56	7/8	8	20
5 x 13-1/2	17RT1050134	-	13.50	11.75	1.12	1.75	7/8	8	32
6 x 13-1/2	17RT1060134	18RT1060134	13.50	11.75	1.12	1.75	7/8	8	30
6 x 16	17RT1060160	-	16.00	14.25	1.19	1.94	1	12	55
8 x 16	17RT1080160	-	16.00	14.25	1.19	1.94	1	12	45
8 x 19	17RT1080190	-	19.00	17.00	1.25	2.19	1	12	76
10 x 19	17RT1100190	-	19.00	17.00	1.25	2.19	1	12	68



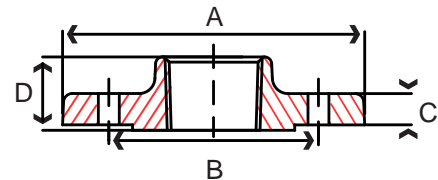
**Fig. 17HF1 – 125 lb. Threaded Hydrant Flange**

Size IN	Part Number Black	A IN	B IN	C IN	D IN	Bolt Hole Size	Number of Bolt Holes	Weight LB
6	17HF1060	11.00	9.50	1.00	1.56	7/8	6	16



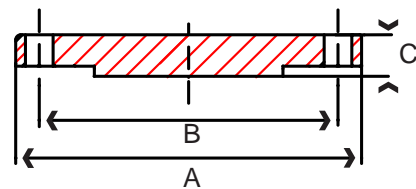
**Fig. 17HB1 – 125 lb. Blind Hydrant Flange**

Size IN	Part Number Black	A IN	B IN	C IN	Bolt Hole Size	Number of Bolt Holes	Weight LB
6	17HB1060	11.00	9.50	1.00	7/8	6	26



**Fig. 17TH2 & 18TH2 – 250 lb. Threaded Companion Flange**

Size IN	Part Number		A IN	B IN	C IN	D IN	Bolt Hole Size	Number of Bolt Holes	Weight LB
	Black	Galvanized							
2	17TH2020	18TH2020	6.50	5.00	0.88	1.25	3/4	8	7
2-1/2	17TH2024	18TH2024	7.50	5.88	1.00	1.43	5/8	8	10
3	17TH2030	18TH2030	8.25	6.62	1.12	1.56	5/8	8	14
4	17TH2040	18TH2040	10.00	7.88	1.25	1.75	5/8	8	24
6	17TH2060	-	12.50	10.60	1.44	1.94	5/8	12	39
8	17TH2080	-	15.00	13.00	1.62	2.19	1	12	58



**Fig. 17BL2 – 250 lb. Blind Flange**

Size IN	Part Number Black	A IN	B IN	C IN	Bolt Hole Size	Number of Bolt Holes	Weight LB
2	17BL2020	6.50	5.00	0.88	3/4	8	8
2-1/2	17BL2024	7.50	5.88	1.00	7/8	8	12
3	17BL2030	8.25	6.62	1.12	7/8	8	16
4	17BL2040	10.00	7.88	1.25	7/8	8	27
5	17BL2050	11.00	9.25	1.38	7/8	8	35
6	17BL2060	12.50	10.60	1.44	7/8	12	50
8	17BL2080	15.00	13.00	1.62	1	12	81
10	17BL2100	17.50	15.25	1.88	1-1/8	16	115

All 250 lb. Flanges have 1/16 raised face