

Hay and Forage Attachments Guide



Section 1: Round Balers

Section 2: Small Square Balers

Section 3: Bale Ejectors

Section 4: Self-Propelled Windrowers

Section 5: Windrower Platforms

Section 6: Mower Conditioners

Section 7: Pull-Type Forage Harvesters

Section 8: Large Square Balers

Section 1: Round Balers

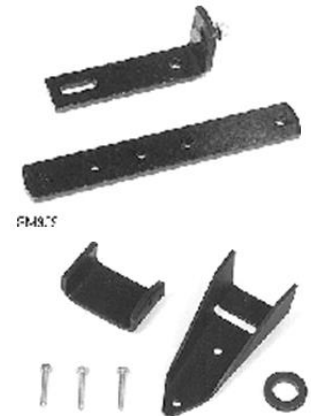
BE22696 Bale Counter 6, 7, 8 and 9 Series

The bale counter keeps record of the number of bales baled.



BE23519 Monitor Mounting Kit 6, 7, 8 and 9 Series

Console mounting kit is for 5020, 5025, 6000, 6010, 6015, 6020, 6005, 7000, 7010, 7020 Cab Tractors and John Deere tractors with a Sound-Gard body.



BE23599 Monitor Mounting Kit 6, 7, 8 and 9 Series

Console mounting kit for John Deere tractors with a Sound-Gard body.

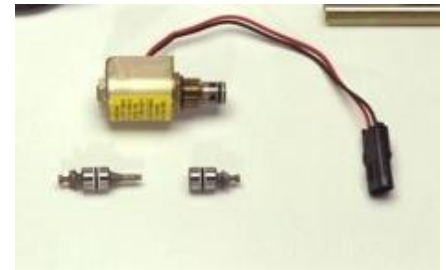
BE32262 Drawbar Shield 6, 7, 8 and 9 Series

A drawbar shield helps to prevent windrow bunching that can occur when the drawbar contacts heavy windrows.



BE23827 Variable Core Valve 466, 566, 467, 567,
468, 568, 469 and 569
BE24159 Variable Core Valve 457, 557, 458, 558, 459
and 559
BE32298 Variable Core Valve 459 Standard with
Electric Twine

This kit reduces hydraulic pressure for easier bale starts in difficult conditions. The variable core kit is for balers equipped with the **BaleTrak Pro™** and **BaleTrak Plus™** monitor.



BE23828 High Moisture Kit 6, 7, 8 and 9 Series
(4' Wide)

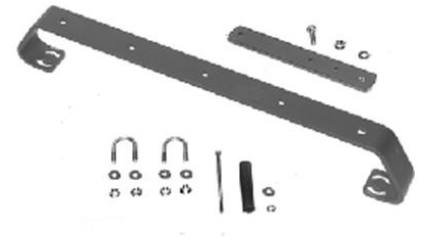
BE23829 High Moisture Kit 6, 7, 8 and 9 Series
(5' Wide)

This kit will help performance in wet sticky crops. It offers the starter-roll-scraper knife but does not include the staggered roll-auger kit. Not the same as a silage-special kit.



BE23840 Monitor Mounting Kit 6, 7, 8 and 9 Series

Console mounting kit is for open-station 6000 (serial numbers 148721 and below) and all 7000 and 7010 Tractors.



BE23861 Monitor Mounting Kit 6, 7, 8 and 9 Series

Console mounting kit is for 5000, 5010, 5020, 5025 Series Open-Station Tractors except isolated open operator platform.



BE23862 Monitor Mounting Kit 6, 7, 8 and 9 Series

Console mounting kit is for 6000, 6010, 6020 (serial numbers 148722 and above) or low-profile 6000, 6010, 6020 (serial numbers 148787 and above) Tractors.



BE32481 Monitor Mounting Kit 447 and 547

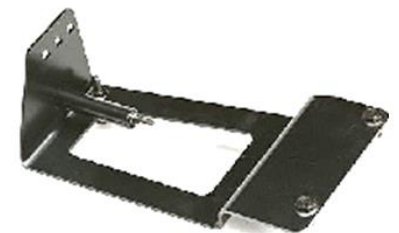
Electric twine-wrap control module mounting kit for open-station tractors (clamps on ROPS support).

Also order A54171, A53254, and E88560



BE23864 Monitor Mounting Kit 6, 7, 8 and 9 Series

Console mounting kit is for 5000 and 5010 Series Tractors with a cab.



BE23893 Gathering Wheels 6, 7, 8 and 9 Series
(Regular & MegaTooth Pickups)

These wheels are perfect for picking up extra-wide or wind-scattered windrows – improving your haymaking productivity.



BE23963 Monitor Mounting Kit 6, 7, 8 and 9 Series

Console mounting kit is for 6405, 6605, 7405, 6403, and 6603 Open-Station Tractors.



BE32556 Bale Push Bar (5') 567, 568 and 569

The bale push bar moves the bale away from the baler and eliminates the need to back up when ejecting a bale.



BE24157 Adjustable Twine Guide (LH & RH) 557, 558 and 559

BE24158 Adjustable Twine Guide (LH) 447, 457, 448, 458, 449 and 459

Adjustable twine guides are used to move the location of the twine closer to the center of the bale. Guides are especially useful when baling slick grasses and straw.



BE32284 Bale Ramps 449

The spring loaded bale ramp allows a bale to gently roll away from the baler. It reduces the need to back up for bale ejection.



BE24231 Monitor Mounting Kit 6, 7, 8 and 9 Series

Console mounting kit is for 5020 and 5025 Series Tractors with an isolated operator platform.



BE24260 Safety Chain – 10,000 lbs. Multiple Applications

BE24261 Safety Chain – 20,000 lbs. Multiple Applications

A safety chain serves as a device to ensure the round baler stays attached to the tractor, should a drawbar or hitch pin failure occur.



| | | |
|---------|----------------------|-----|
| BE24268 | Hydraulic Bale Ramps | 458 |
| BE32285 | Hydraulic Bale Ramps | 459 |
| BE24269 | Hydraulic Bale Ramps | 558 |
| BE32291 | Hydraulic Bale Ramps | 559 |

The hydraulic bale ramp allows the bale to gently roll away from the baler. The tractor must have a 2200-psi hydraulic system to operate hydraulic bale ramps.



| | | |
|---------|--|----------------------|
| BE30005 | Deflector Curtains (5' Wide Balers) | 6, 7, 8 and 9 Series |
|---------|--|----------------------|

Curtains fit only on balers with the MegaWide™ pickup to deflect objects that may be thrown forward by the MegaTooth™ teeth. The curtains can be easily removed for pickup service.



| | | |
|---------|-----------------------|-------------------|
| BE32448 | BaleTrak™ Pro Monitor | 7, 8 and 9 Series |
|---------|-----------------------|-------------------|

A second BaleTrak Pro monitor-controller and tractor portion of the wiring harness can be ordered for installation on a second tractor, if desired.



| | | |
|---------|--------------------|----------------------|
| BE31105 | Crop Deflector Kit | 6, 7, 8 and 9 Series |
|---------|--------------------|----------------------|

The crop deflector kit prevents crop from accumulating in the lower gate area of the baler, which can prevent the gate from closing. The deflector keeps crop out of the lower gate area as the bale is ejected from the bale chamber.



| | | |
|---------|----------------------|---------------------------------------|
| BE31125 | High Flotation Tires | 8 and 9 Series (MegaWide™ Pickups) |
|---------|----------------------|---------------------------------------|

The 21.5-16.1 XL tire option provides a smoother ride on rough or pivot tracked ground, allowing faster ground speed and increasing productivity. The large footprint also decreases ground compaction.



| | | |
|---------|---------------------|--|
| BE31132 | Pickup Gauge Wheel | 6, 7, 8 and 9 Series (Regular Pickup) |
| BE31133 | Gauge Wheel Arm Kit | 6, 7, 8 and 9 Series (Regular Pickup) |

Gauge wheels provide smooth ground gauging over uneven terrain while protecting your pickup. Gauge wheels are adjustable to meet pickup-tooth-to-stubble-height requirements.



| | | |
|---------|--|--------------------------|
| BE31183 | 4' Wide Staggered Belt Roll Auger Kit | 458, 468, 459 and 469 |
|---------|--|--------------------------|

In very dry, fluffy crop conditions, this auger kit prevents crop from climbing the front of the baler belts.



| | | |
|---------|-------------------------------|--------------------------|
| BE32101 | Side-sheet Enhancement Kit | 468, 568, 469 and 569 |
| BE32141 | Side-sheet Enhancement Kit | 467 and 567 |

Use the side-sheet enhancement kit in extremely abrasive crops and field conditions to add additional service life to 7 or 8 Series Round Balers with worn side sheets.



| | | |
|---------|-----------------------|--|
| BE32240 | Hydraulic Pickup Lift | 6, 7, 8 and 9 Series (MegaWide™ Plus) |
| BE32241 | Hydraulic Pickup Lift | 6, 7, 8 and 9 Series (Regular Pickup) |

The hydraulic pickup lift makes raising the pickup for transport and clearing field obstructions easy. The crank handle is used as an adjustable down stop when the hydraulic pickup lift cylinder is installed, limiting pickup downward travel.



| | | |
|---------|---|----------------|
| BE32257 | Cornstalk Compressor Rack (5' Wide Balers) | 8 and 9 Series |
|---------|---|----------------|

The cornstalk compressor rack is designed to improve the feeding of fluffy cornstalk windrows into the baler. The cornstalk compressor rack offers a full complement of compressor rods and utilizes a solid steel shaft to attach the compressor rods. For 6 and 7 series balers reference DTAC solution 90295.



| | | |
|---------|-----------------------|--------------------------|
| BE32258 | Auxiliary Take-up Arm | 468 and 469 |
| BE32259 | Auxiliary Take-up Arm | 568 and 569 |
| BE32453 | Auxiliary Take-up Arm | 458, 558, 459 and 559 |

Auxiliary take-up rolls eliminate flipping and twisting of the belts in hilly conditions.



| | | |
|---------|--------------------------|----------------------|
| BE32270 | 540 RPM Driveline | 6, 7, 8 and 9 Series |
| BE32271 | 1000 RPM Driveline 1-3/8 | 6, 7, 8 and 9 Series |
| BE32272 | 1000 RPM Driveline 1-3/4 | 6, 7, 8 and 9 Series |

These drivelines use a friction slip clutch.



| | | |
|---------|--------------------------|---------------------|
| BE32286 | 540 RPM Driveline | 469 and 569 Premium |
| BE32287 | 1000 RPM Driveline 1-3/8 | 469 and 569 Premium |
| BE32273 | 1000 RPM Driveline 1-3/4 | 469 and 569 Premium |

Premium balers use a cam style clutch. Cam-clutch PTO drivelines disengage when slipped which allows them to run cooler and are maintenance free unlike the slip-clutch PTO drivelines which require yearly slippage maintenance.



| | | |
|---------|-----------------------|---------------------|
| BE32277 | Auxiliary ISO Harness | 469 and 569 Premium |
|---------|-----------------------|---------------------|

For 30, 40, 50, 55, 60, or 70 Series Tractors or competitive tractor models without a current ISO Bus wiring harness installed. Kit Includes battery (AFH205692) harness and cab harness (AF205697).



| | | |
|---------|------------------------|--|
| BE32310 | Corn Cob Filler Plates | 6, 7, 8 and 9 Series (MegaWide™ Pickups) |
|---------|------------------------|--|

Pickup filler plates are now available for MegaWide™ pickups. The filler plates are designed to prevent corn cobs from becoming lodged in pickup strippers. Adding filler plates to a MegaWide pickup will ultimately improve pickup tooth and rotor tine reliability.



BE32314 Grease Bank 469 and 569

This allows the customer to only have to grease eight zerks (four on each side of the baler) for grease zerks that were hard to reach on previous models. The customer will still have to grease the driveline and some other components on the baler. Kit is standard on premium balers.



BE32327 Speed Compensation Slip Clutch Alert Kit 7, 8 and 9 Series

Kit is included in base equipment for MY2010 and later models. Kit requires BaleTrak Pro Monitor and MegaWidePlus pickup.



BE32659 COVER-EDGE™ Net-Wrap Kit 567, 568 and 569

BE32663 COVER-EDGE™ Net-Wrap Kit 467, 468 and 469

BE32664 COVER-EDGE™ Net-Wrap Kit 557, 558 and 559

BE32665 COVER-EDGE™ Net-Wrap Kit 457, 458 and 459

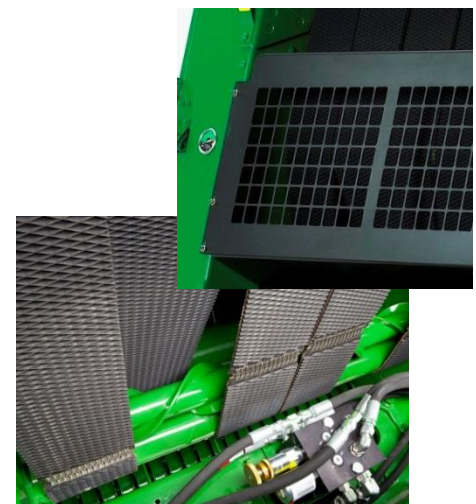


The COVER-EDGE net wrap stretches over the edges of the bale approximately 1 in. to 2 in. for complete bale coverage. The attachment also provides storage space for an extra roll of surface wrap. The COVER-EDGE net wrap produces a better-looking bale for increased marketability and retains higher hay quality during storage. The wrap time is reduced to only two turns of the bale.

BE32442 Silage Special Kit 459 and 469

BE32443 Silage Special Kit 559 and 569

The silage-special kit is offered as a bundle for field installation if the baler is not ordered as a silage-special machine from the factory. There are three major components to a silage-special baler, a staggered roll-auger kit (1), starter-roll-scraper knife, and a screen (2). The powered auger sits above the staggered roll on the baler to help keep wet hay from traveling up the belts and reduce buildup on that roll. The screen is bolted on the front of the baler as a safety feature. The knife/scrapper is mounted in front of the starter roll to help prevent wrapping of wet crop on that starter roll.



| | | |
|---------|--------------------------------------|-----|
| BE32464 | Monitor Mounting Kit Cab Tractors | 449 |
| BE32465 | Monitor Mounting Kit Open Station | 449 |

Monitor mounting kit for 4520 and 4720 tractors.

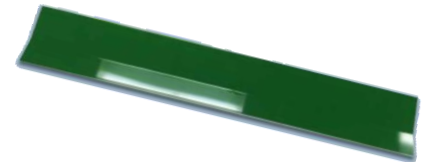


| | | |
|---------|---------------------------------|---|
| BE32467 | B-Wrap Kit (Non-Premium Balers) | 457, 467, 557, 567 |
| BE32551 | B-Wrap Kit (Premium Balers) | 458, 468, 558, 568 459, 559, 469 and 569 |

B-Wrap is applied onto bales just like net wrap, but it protects hay much better than net. B-Wrap includes a special patented material with Tama SCM Technology. It sheds rain and snow while protecting the bale from ground moisture. Plus this material has microscopic pores that let water vapor inside the bale escape. B-Wrap is the alternative to indoor storage, delivering barn-quality hay without the barn. The B-Wrap kit is easy to install. The kit includes wiring that connects a sensor to the bale monitor and a new EPOM chip is also added to the bale monitor. 7 and 8 (MY10 & Older) Series Balers must be equipped with a speed compensation/slip clutch alert kit (BE32327).



| | | |
|----------|---------------------------------|-------------------------------------|
| FH332540 | Surface Wrap Net Pan Liner (4') | 457, 458, 459, 467, 468, and 469 |
| FH332541 | Surface Wrap Net Pan Liner (5') | 557, 558, 559, 567, 568, and 569 |

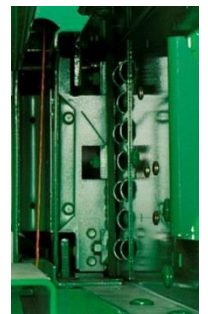


Instead of replacing the whole Net Pan Support, we now offer the net pan liner that can be welded into place to mitigate replacement of the complete assembly.

Section 2: Small Square Balers

| | | |
|---------|--------------------|------------------|
| BE20120 | Side Hay Resistors | 328, 338 and 348 |
|---------|--------------------|------------------|

Side hay resisters help to increase bale density, especially when baling light, dry material such as straw. One or two sets of resisters may be installed, depending on the bale density desired.



| | | |
|---------|------------------|-----|
| BE21106 | Auxiliary Lights | 348 |
|---------|------------------|-----|

This bundle consists of pickup-area and knotter-area lights with a switch, and a twine or wire box area light with a switch. Attachment is helpful for nighttime baling.



BE21437 Multi-luber for Twine Knotter 328, 338 and 348

The multi-luber for the twine knotter reduces the time and effort required to lubricate the knotter.



BE21497 Regular Bale Chute 328, 338 and 348

The regular bale chute drops the bale on its wide side.



BE21723 Side-drop Bale Chute 328, 338 and 348

The side-drop bale chute drops each bale on its side and keeps the twine off the ground. It is reversible so bales may be dropped on either the right or left side.



BE32440 Wagon Hitch Support 328, 338 and 348

BE21896 Hitch Telescoping 328, 338 and 348

The wagon hitch support is required for a baler not equipped with a wagon hitch and bale chute extension. Add a hitch to load bales onto a trailing wagon.



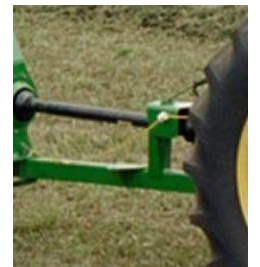
BE22066 Bale Chute Extension 328, 338 and 348

Add the extension to allow bales to be loaded onto a trailing wagon.



BE22078 Hydraulic Tongue Positioning Bracket 328, 338 and 348

This bracket is required to attach the hydraulic cylinder to the tongue on balers with Category 4 driveline. It can be used with the hydraulic cylinder or with an owner-supplied cylinder (3-in. x 8-in. double acting).



| | | |
|---------|---------------------|-----|
| BE22083 | Slip Clutch | 348 |
| BE22086 | Slip Clutch (CAT 5) | 348 |

This slip clutch protects drive components including driveline, u joints, gearboxes, and chains. Drivelines benefit from this clutch due to the irregular loads that a square baler sees due to the plunger packing hay in the compression chamber.



| | | |
|---------|--------------------|------------------|
| BE22172 | Pickup Gauge Wheel | 328, 338 and 348 |
|---------|--------------------|------------------|

The adjustable gauge wheel enables the pickup to follow ground contours more evenly when operating in irrigated or rough fields. A flotation-type tire (16 x 6.50-8) allows smoother operation.



| | | |
|---------|--------------|------------------|
| BE23404 | Bale Counter | 328, 338 and 348 |
|---------|--------------|------------------|

The bale counter keeps an exact record of the number of bales baled. It keeps count to 9,999 and can be set back to zero at any time.



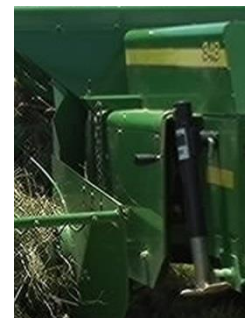
| | | |
|---------|----------------------------|------------------|
| BE24261 | Safety Chain – 20,000 lbs. | 328, 338 and 348 |
|---------|----------------------------|------------------|

A safety chain serves as a device to ensure the round baler stays attached to the tractor, should a drawbar or hitch pin failure occur.



| | | |
|---------|-----------------------|------------------|
| BE24263 | Hydraulic Pickup Lift | 328, 338 and 348 |
|---------|-----------------------|------------------|

The hydraulic pickup cylinder with down stop replaces the pickup positioning crank. The adjustable down stop enables the operator to easily position the pickup to the preset operating height for accurate windrow retrieval. Hoses and couplers are included.



| | | |
|---------|--|------------------|
| BE24273 | Hydraulic Cylinder for Tongue Positioning | 328, 338 and 348 |
|---------|--|------------------|

A double-acting 3-in. x 8-in. hydraulic cylinder with hoses is available to make positioning the baler for operating or transporting an easier job.



BE31075 540 RPM Driveline 348

This power take-off (PTO) is available as a replacement hookup for non-repairable ball-slip-style PTO telescoping hookup. Category 5, sliding collar telescoping hookup, 540 rpm



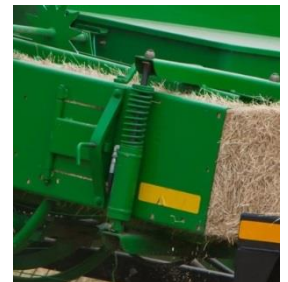
BE31174 Equal-Angle Hitch 348

The equal-angle hitch helps to smooth out vibrations when making turns with the harvester operating. It reduces wear and tear on driveline components. Category 5



BE32064 Hydraulic Bale Tension 328, 338 and 348

The hydraulic bale tension permits easy adjustment of bale density to meet crop variations. Exerts constant and uniform pressure on each side and has an easy one know control.



BE32309 Feeding Enhancement Kit 328, 338 and 348

This kit allows positive feeding of crop off the end of the auger into the pre compression chamber of the baler. This kit can be used in all crops but primarily recommend for crops that are long, steamy, and unconditioned.



Section 3: Bale Ejectors

BE21023 Left-hand Wheel Extensions 346, 347 and 348

BE21502 Left-hand Wheel Extensions 327, 328, 336, 337 and 338

The wheel extensions allow mounting the 42 Bale Ejectors on various balers.



BE23854 Electric Distance Control 327, 328, 336, 337,

BE22060 Hydraulic Cylinder 338, 347 and 348

BE21036 Hydraulic Tubes

The electric distance control allows the operator to adjust the throwing distance from the comfort of the tractor seat.



BE22557 Remote Wagon Hitch 327, 328, 336, 337,
338, 347 and 348

This enables the operator to unhook the wagon from the tractor seat.



BE23841 Electronic Distance Control 40 and 42
(Control Box)

BE23842 Electronic Distance Control 40 and 42
(Control Lever)

Order this if a second control console is desired. It connects to the tractor's three-terminal convenience outlet.



BE23853 Electric Distance and Tilt 40 and 42

Includes console and mounting bracket, electric actuator for distance control, and an electric actuator for tilt control plus wiring to hook up to the tractor's three-terminal convenience outlet.



BE23965 42 Bale Ejector 327, 328, 336, 337,

BE32225 42 Bale Ejector (Export) 338, 347 and 348

The bale ejector takes the hard work out of loading hay bales onto the trailing wagon.



BE32440 Support Kit 40 and 42

This kit is needed with a bale ejector to be able to attach the wagon that you are kicking the bales into.



Section 4: Self-Propelled Windrower

RE154906 Additional Lighting Kit 4895 and 4995

Four additional working lights are available as a field-installed attachment. The lights are adjustable to illuminate the area to the sides and rear of the platform. The lights mounted on the frame rails can be operated separately from the lights at the rear of the cab.



BE24183 Forming Shields 4990 and 4995

BE31003 Attaching Bundle 4990 and 4995

This bundle allows using the higher-horsepower 4990 and 4995 in sickle applications in addition to providing the ability to change between rotary and sickle platforms.



BE31134 Rear Air Screen Cover 4890, 4895, 4990 and 4995

The optional rear air screen cover redirects the intake of air to the top of the windrower instead of from the bottom and sides. Air on top of the windrow contains less foreign material, so plugging of the rear rotary air screen is reduced when cutting dry, fluffy material.



BE32070 Rear-wheel Dampener 4895 and 4995

The rear-wheel dampener minimizes wheel wobble occasionally experienced by rear caster wheels during higher transport speeds and washboard road conditions. This bundle is available for 4895 and 4995 Self-Propelled Windrowers with serial numbers 310001 up to 350000.



BE32213 Basic Radio (AM/FM 400 Series
and weatherband)

BE32214 Premium Radio (AM/FM, 400 Series
weatherband, CD, satellite)

There are two radio options for the 400 Series Self-Propelled Windrowers.



BE32215 LH Narrow Axle Wedge Kit A400 and R450

BE32216 RH Narrow Axle Wedge Kit A400 and R450

This kit allows rear axle to be positioned in narrow position to form windrows on right-hand or left-hand side of the machine.



BE32217 Power Mirrors 400 Series

Two side-mounted mirrors can be electrically adjusted right from your operator's station. Mirrors are also heated for greater visibility in cold conditions.



BE32218 Additional Lighting Kit 400 Series

Four additional working lights are available as a field-installed attachment. Lights mount to rear of cab and are adjustable.



BE32220 Hitch – Canola Roller D450

This field-installed receiver hitch is only to be used when towing a Canola roller; do not exceed the rated hitch capacity.



BE32235 Attaching Bundle R450

BE32236 Forming Shields R450

This kit allows using the higher-horsepower R450 Windrower in sickle applications in addition to providing the ability to change between rotary and sickle platforms. It allows the 890, 895 and 896 platforms to be used on R450.



BE32357 Hydraulic Centerlink W110 and W150

Adjust header and guard angles on-the-go from the cab. This enables you to get the knife and guards closer to the ground for recovery of downed crops and improved performance in crops such as peas, lentils, edible beans and soybeans.

Note: Auxiliary valve is also required when mounting a hydraulic center link on W110 only.



BE32359 Centerlink Vertical Alignment Kit W150

This kit includes an additional cylinder to raise and lower the center link for faster and easier attaching of the platform. It is highly recommended for commercial operators and customers who attach and detach the platform transport frequently.



BE32360 Pressure Sensor Kit W150

This kit gives indication of capacity when operating in tough conditions to maximize machine productivity. It allows monitoring of hydraulic platform drive pressures as follows: knife or reel circuit on draper header, knife, or conditioner circuit on auger platform.



BE32361 Reverser Kit W150

Kit is recommended with hay conditioner on draper platforms. It allows reversing direction of the following platform functions: knife, draper, and conditioner on draper headers and knife, auger, reel, and conditioner on auger platform.



| | | |
|---------|--|---------------|
| BE32362 | Booster Spring Kit (Includes 2 Springs) | W110 and W150 |
| BE32363 | Booster Spring Kit | W110 and W150 |

Booster spring kits are required for all 180A Auger Platform and many 30-ft and larger draper platform configurations. Refer to the float spring requirements in sales manual for requirements.



| | | |
|---------|---------------------|---------------|
| BE32364 | Light Flotation Kit | W110 and W150 |
|---------|---------------------|---------------|

Kit is required for 415D. Kit includes extension bracket for spring to reduce float. Refer to the float spring requirements in sales manual for requirements.



| | | |
|---------|-------------------|---------------|
| BE32365 | Windshield Shades | W110 and W150 |
|---------|-------------------|---------------|

Shades are recommended to reduce glare from sun off front windshield during early morning and late afternoon operation. Also helps to keep solar heat off back of operator. Kit includes front and rear.



| | | |
|---------|------------|------|
| BE32366 | Weight Box | W150 |
|---------|------------|------|

Weight box required to allow transport without platform attached. Weight box includes hitch for towing slow speed transport behind dual-direction windrowers (W150). Must also order wiring harness and hitch pin for weight box if towing slow-speed transport with W150. Requires wiring harness and pin for connecting to the draper platform slow-speed transport drawbar.



| | | |
|---------|-----------------|---------------|
| BE32369 | Warning Beacons | W110 and W150 |
|---------|-----------------|---------------|

Add these to your windrower to increase visibility of your machine while traveling on the road during the day or night.



BE32370 Lighting or Marking Kit W150

Kit is required for forward travel on W150. Kit is base equipment on W110.



BE32371 Engine Fan Baffle W110 and W150

Reduces windrow disturbance caused by engine cooling fan blast. Kit is recommended for reducing dust or crop disturbance for extended intervals between cleaning the rear screen and air filters.



BE32372 Auxiliary Hydraulic Valve W110

Kit is required for hydraulic center-link on W110. Kit is in base equipment on W150.



**BE32373 Anti-shimmy Kit for
Rear Casters W110**

The anti-shimmy kit minimizes wheel wobble occasionally experienced by rear caster wheels during higher transport speeds and washboard road conditions. Kit is base equipment on W150.



BE32374 Canola Roller Hitch Kit W110 and W150

Hitch for attaching drawn canola roller to the engine end of the W110 or W150 Windrower. Lighting/marketing kit for cab forward road travel on W150 required for road transport of drawn canola roller with W150 Windrower.



BE32375 Instructional Seat W110

For an instructional seat to train new operators or diagnosing machine problems, an instructional seat is available as a field-installed attachment. Seat is base equipment on W150.



BE32376 HID Auxiliary Lighting W110 and W150

High-intensity discharge (HID) auxiliary front lighting - includes two lights. Add more productivity at night with these HID lights.



BE32377 Knife and Reel Speed
Index and Tilt Sensing Kit W110

This kit allows the electronic monitoring of platform knife speed, reel speed, and platform angle. Also enables the indexing of reel speed to ground speed. Also requires knife speed sensor and reel speed sensor on platform. For platform angle sensing the hydraulic center link is required. Kit is base equipment for W150.



BE32386 Hay Conditioner with
Feed Deck W150

The hay conditioner is compatible with the W150 only and up to 30-ft platforms. It consists of the center feed section and a conditioner module. It enables faster dry down and wider cut than conventional hay harvesting methods. It is recommended primarily for silage and secondly for dry hay crops in drier climates with good drying conditions.



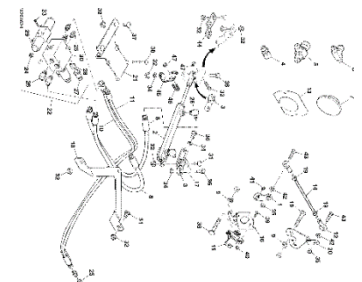
BE32428 Double Windrow
Attachment W150

Attachment is recommended for 25 ft. and under draper platforms and all auger platforms. Enables double windrowing and enables triple windrowing on platforms up to 16 feet. Requires hay conditioner on draper platforms to transfer crop.



BE32543 Hydraulic Valve Kit
(AutoTrac™) W150

The integrated hydraulic kit delivers improved line acquisition and faster cutting speeds.



BE32429 Wiring Harness and W150
Hitch Pin Kit

Kit includes wiring harness for weight box to attach lighting for platform when operating on public roads.



BE32461 Receiver Hitch W235

Add this to your machine for increased versatility. Hitch is only for towing a canola roller.



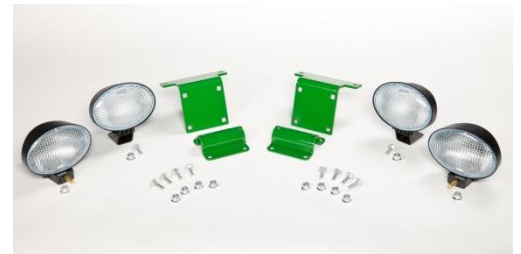
BE32484 Tool Box W235

The toolbox is an optional piece of equipment, which can quickly be removed from the machine. This allows the operator to carry parts and tools to the platform, minimizing trips to and from the toolbox during maintenance.



BE32485 Additional Side Lighting W235

The lights are adjustable to illuminate the area to the sides and rear of the platform.



BE32493 Flexible 4th Step W235

The step mounts to the existing step hardware for added versatility in muddy conditions.



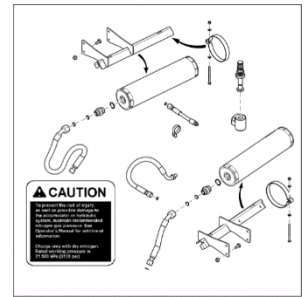
BE32554 Wheel Kit A400, D450, R450,
W235, and W260

Optional 16.5Lx16.1 8 PR ribbed tires are available for A400, D450, R450, W235, and W260 Windrowers. The larger tires provide improved ride quality and flotation especially over irrigation pivot tracks and in muddy conditions.



BE32600 Accumulator Kit W235

This kit is intended for MY14 W235 (Rotary Configuration) machines to add independent float for improved functionality and operation with regards to adjusting float independently.



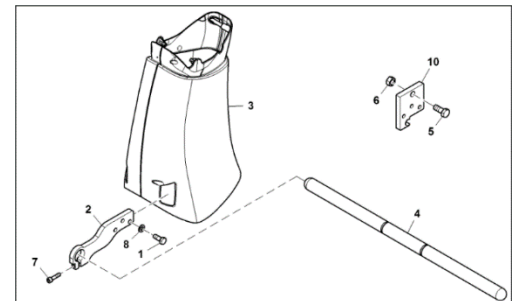
BM19780 Quick Tach Weights 70 lb. 400 Series and W235

Suitcase weights can be attached to the rear weight rack located directly underneath the rotary air screen access door.



KXE10454 Footrest Kit W235, W260

Provides a simple support to make longer rides in the field more comfortable and help with leg fatigue.



Section 5: Windrower Platform

BE24277 Deflector Kit 994 and 995

BE24278 Mounting Parts 994 and 995

An adjustable swathboard kit is available for customers desiring maximum windrow width. This kit will increase windrow width approximately 1-ft. depending on crop conditions. Kit is for impeller conditioner.



BE31182 Rotary Stripper Bundle 995

Rotary strippers can be installed on the 2nd module in from each end to improve crop flow. This can improve cutting, minimize crop recirculation, and smooth out material flow through the conditioner. (Modules 2 and 9)



BE32358 Gauge Rollers 140A, 160A and 180A

Gauge rollers attach behind the cutterbar to reduce wear on the cutterbar wear plate and improve the movement of the header over uneven terrain, as well as in sand or firm soil conditions.



BE32368 Additional Skid Shoes 140A, 160A and 180A

One set of shoes is factory installed. An additional set is available field installed which includes two shoes.



BE32427 Stub Guards 140A

BE32378 Stub Guards 160A

BE32383 Stub Guards 180A

BE32389 Stub Guard Kit 415D

BE32390 Stub Guard Kit 420D

BE32391 Stub Guard Kit 425D

BE32392 Stub Guard Kit 430D

BE32393 Stub Guard Kit 435D



Improve cutting performance in tough, stingy, grass-type crops that need to be cut close to the ground, such as grass and hay.

BE32399 Tall Crop Divider 140A, 160A and 180A

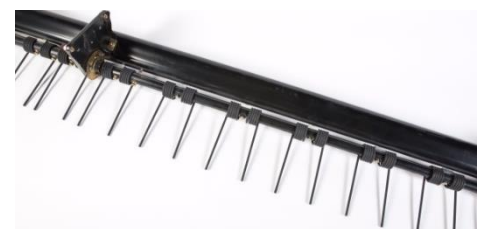
The tall crop dividers attach to the ends of the header for clean crop dividing, and reel entry in tall crops. They can be easily adjusted to suit the crop.



BE32418 Replaceable Reel Bat 140A

BE32420 Replaceable Reel Bat 160A

BE32421 Replaceable Reel Bat 180A



Make servicing your reel an ease with these replacement reel bats.

| | | |
|---------|---------------------------------------|---------------------|
| BE32379 | End Swath Deflector Rod Left-hand | 400D Series Drapers |
| BE32380 | End Swath Deflector Rod Right-hand | 400D Series Drapers |
| BE32381 | Swath Forming Rods Center | 400D Series Drapers |



These rods are mainly used for grass seed cutting applications. The rods form the windrow such that the heads are in the center and thus protected from shatter.

* Center Swath Forming Rods Shown

| | | |
|---------|----------------------|------------------------------|
| BE32385 | Hydraulic Deck Shift | 425D, 430D, 435D and 440D |
|---------|----------------------|------------------------------|

The hydraulic deck shift attachment allows the operator to select center, left, or right delivery from the windrower cab.



| | | |
|---------|----------------------|---------------------|
| BE32387 | Draper Extension Kit | 400D Series Drapers |
|---------|----------------------|---------------------|

This kit increases the length of each deck up to 10 inches (250mm) into the header opening which decreases the swath width when cutting light/thin crops.



| | | |
|---------|-------------------------|----------------------|
| BE32388 | Double Draper Drive Kit | 430D, 435D, and 440D |
|---------|-------------------------|----------------------|

This option minimizes draper slipping in heavy forage crops when using the side delivery feature, by having four draper rollers powered instead of the normal two.



| | | |
|---------|----------------|------|
| BE32563 | Tine Tube Reel | 415D |
| BE32564 | Tine Tube Reel | 420D |
| BE32397 | Tine Tube Reel | 425D |
| BE32398 | Tine Tube Reel | 430D |



Additional bats can be field installed to convert from six bats to nine bats. The nine-bat configuration gives more interaction for more positive and smooth crop flow in heavy down crop conditions. Additional bat configurations are recommended for heavy crop conditions such as silage and grass seed crops.

BE32400 Inboard Skid Shoes 400D Series

This kit is useful when cutting low to the ground. It acts as a touch-down point when operating on rough or undulating ground.



BE32401 LH Vertical Knife Mounts 400D Series

BE32402 RH Vertical Knife Mounts 400D Series

BE32403 Auxiliary Vertical Knife Plumbing Kit 400D Series

The vertical knife mounts allow installation of vertically oriented sickles onto both ends. The SABRE vertical knife must be obtained from Canadian Agri Technologies.



BE32404 End Finger Kit 400D Series

The steel fingers attach to ends of “every other” tine bar and help in clearing material in heavy hard to cut crops. Two kits are required for modifying each bar of a 6-bat reel.



BE32405 Cutterbar Polly 415D

BE32406 Cutterbar Polly 420D

BE32407 Cutterbar Polly 425D

BE32408 Cutterbar Polly 430D

BE32409 Cutterbar Polly 435D

BE32411 Cutterbar Polly 440D



Poly is recommended for cutting on the ground where the soil adheres to steel.

BE32419 Hydraulic Kit - Upper Auger and Double Draper 430D, 435D and 440D

Need for installation of upper auger or double draper drive.

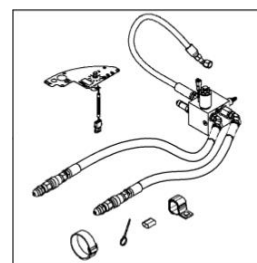


| | | |
|---------|-------------------|------|
| BE32413 | Upper Cross Auger | 415D |
| BE32414 | Upper Cross Auger | 425D |
| BE32415 | Upper Cross Auger | 430D |
| BE32416 | Upper Cross Auger | 435D |
| BE32417 | Upper Cross Auger | 440D |



The cross auger helps deliver very bulky crops across the header onto the windrow. May also need case drain kit BE32510.

| | | |
|---------|---|---------------------------------------|
| BE32419 | Hydraulic Kit - Upper Auger and Double Draper | 415D, 420D, 425D, 430D, 435D and 440D |
|---------|---|---------------------------------------|



Need for installation of upper auger or double draper drive.

| | | |
|---------|-------------------|---------------------|
| BE32426 | Stabilizer Wheels | 430D, 435D and 440D |
|---------|-------------------|---------------------|

The stabilizer wheels help stabilize the header in field conditions that would otherwise cause the header to bounce and result in uneven cutting height.



| | | |
|---------|----------------------|------|
| BE32422 | Spare Knife – Coarse | 425D |
| BE32423 | Spare Knife – Coarse | 430D |
| BE32424 | Spare Knife – Coarse | 435D |
| BE32425 | Spare Knife – Coarse | 440D |



Be ready this harvest with a spare sickle.

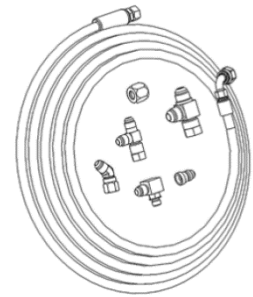
| | | |
|---------|----------------------|---------------------|
| BE32430 | Slow Speed Transport | 430D, 435D and 440D |
|---------|----------------------|---------------------|

The stabilizer/transport wheels help stabilize the header in field conditions that would otherwise cause the header to bounce and result in uneven cutting height. The wheels convert to transport mode to allow the header to be towed behind a properly configured W110/W150 windrower, or agricultural tractor at slow speed.



BE32510 Case Drain Kit 400D Series

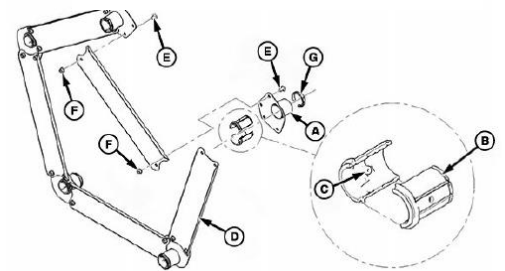
This kit is intended for single draper drive headers equipped with an upper cross auger.



BE32511 Tine Tube Reinforcing Kit (5-Bat) 400D Series

BE32512 Tine Tube Reinforcing Kit (6-Bat) 400D Series

The reel tine tube reinforcing kit is available for five-bat and six-bat reels when cutting extremely heavy crops where high reel loads are experienced.



Section 6: Mower Conditioner

| | | |
|---------|---|-------------|
| BE10055 | 540 RPM Driveline Ball-joint Hitch – Category 5 | 625 and 630 |
| BE10056 | 1000 RPM Driveline Ball-joint Hitch – Category 5 | 630 and 635 |
| BE10057 | 540 RPM Driveline Clevis Hitch – Category 5 | 625 and 630 |
| BE10058 | 1000 RPM Driveline Clevis Hitch – Category 5 | 630 and 635 |
| BE32031 | 1000 RPM Driveline Swivel Hitch – Category 5 | 630 and 635 |
| BE31141 | 540 RPM Driveline Ball-joint Hitch | 830 and 835 |
| BE31142 | 1000 RPM Driveline Ball-joint Hitch | 830 and 835 |



These bundles are available to match your driveline requirements.

BE32262 Drawbar Shield Multiple Applications

A drawbar shield helps to prevent windrow bunching that can occur when the drawbar contacts heavy windrows.



BE23877 Hose Support 900 Series

This attachment supports hydraulic hoses to help prevent damage from rubbing on the Quik-Coupler during operation. It is adjustable to match a wide variety of Quik-Couplers.



BE23921 Turnbuckle Top Link 900 Series

The turnbuckle top link is used to adjust the cutting angle adjustment. It includes a wrench for adjusting.



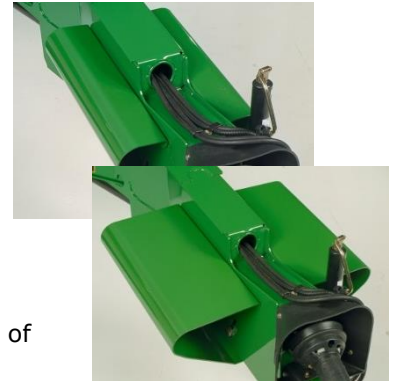
BE31086 Narrow Turn Limiters 500 and 600 Series

BE31087 Wide Turn Limiters 500 and 600 Series

BE31163 Narrow Turn Limiters 800 Series

BE31164 Wide Turn Limiters 800 Series

Turn limiters may be required to prevent powerline damage, if the hitch point of the tractor is beyond the rear drive wheels of the tractor.



BE31153 Clevis Hitch Bundle 600 Series

Match the correct hitch for your application.



BE31176 Ball-joint Hitch 600 Series

Match the correct hitch for your application.



BE31181 Drawbar Extension 500 and 700 Series

Machines ordered with the equal angle hitch will come with a new drawbar extension. This assembly has a cast frame and is easier to attach to the drawbar. When adjusted to the drawbar, the extension can be installed and removed without the use of wrenches.



BE31182 Rotary Stripper Bundle 500 and 700 Series

Rotary strippers can be installed on the end disks to improve crop flow and convergence to the conditioner. This can improve cutting, minimize crop recirculation, and smooth out material flow through the conditioner.



| | | |
|---------|---|-------------|
| BE32032 | Rear Powerline 540 RPM Standard U-joints | 625 and 630 |
| BE32509 | Rear Powerline 540 RPM Constant Velocity U-joints | 625 and 630 |
| BE32033 | Rear Powerline 1000 RPM Standard U-joints (EA) | 630 and 635 |
| BE32035 | Rear Powerline 1000 RPM Standard U-joints (SH) | 630 and 635 |
| BE32034 | Rear Powerline 1000 RPM Constant Velocity U-joints | 630 and 635 |
| BE32439 | Rear Powerline Double Telescoping | 900 Series |



These bundles are available to match your driveline requirements.

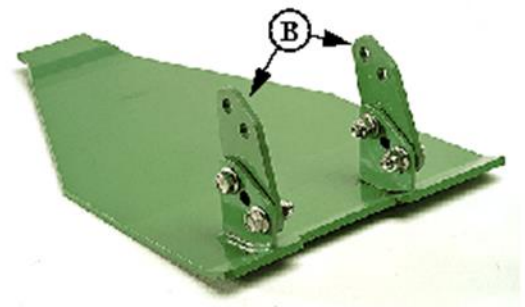
| | | |
|---------|------------------------|------------|
| BE32040 | Hydraulic Tilt Control | 600 Series |
| BE32041 | Hydraulic Tilt Control | 800 Series |
| BE32046 | Hydraulic Tilt Control | 900 Series |

The hydraulic cutting angle adjustment enables the operator to adjust the cutting angle on the go, to match changing ground or field conditions.



| | | |
|----------|---|------------------|
| CC104769 | Gauge Shoe Extension (Four Required) | 600 – 800 Series |
|----------|---|------------------|

Gauge shoe extensions are used to increase the maximum cutting height. Also requires 8 -19M7790 and 8 – 14M7401 from parts for installation.



Section 7: Pull-Type Forage Harvesters

| | | |
|---------|-------------------------|------------------------------|
| BE21559 | Manual Wagon Disconnect | 3950, 3955, 3970 and 3975 |
|---------|-------------------------|------------------------------|

The rope-controlled wagon-disconnect saves time when hitching and unhitching wagons.



| | | |
|---------|-------------------------|------------------------------|
| BE21792 | 10" Vertical Spout Ext. | 3950, 3955, 3970 and 3975 |
| BE21793 | 20" Vertical Spout Ext. | 3950, 3955, 3970 and 3975 |
| BE21794 | 40" Vertical Spout Ext. | 3950, 3955, 3970 and 3975 |

Vertical spout extensions are available to match your needs.



| | | |
|---------|---------------------------|------------------------------|
| BE21795 | 24" Horizontal Spout Ext. | 3950, 3955, 3970 and 3975 |
| BE21796 | 54" Horizontal Spout Ext. | 3950, 3955, 3970 and 3975 |

Horizontal spout extensions are available to match your needs.



| | | |
|---------|---------------------------------|------------------------------|
| BE21819 | 6" Wheel Extension (Non-KP) | 3950, 3955, 3970 and 3975 |
| BE21820 | 13" Wheel Extension (Non-KP) | 3950, 3955, 3970 and 3975 |

Use the proper wheel extensions to match your machine with the row spacing you desire. For machines with a kernel processor please order AE73318 (13") or AE73319 (6") extensions through parts.



| | | |
|---------|-----------------------|------------------------------|
| BE22588 | Wagon Transport Hitch | 3950, 3955, 3970 and 3975 |
|---------|-----------------------|------------------------------|

Use this hitch when transporting a wagon to reduce the width of the overall unit.



| | | |
|---------|-----------------------|------|
| BE23455 | 1000 RPM (Category 5) | 3975 |
|---------|-----------------------|------|

For tractors with up to 150 PTO hp with a 1-3/8-in. diameter PTO shaft and a 2-1/4-in. x 3-1/2-in. maximum drawbar section, it includes a 10-in. equal-angle hitch.



BE23456 1000 RPM (Category 6) 3975

For tractors with up to 235 PTO hp with a 1-3/4-in. diameter PTO shaft and a 2-1/4-in. x 4-in. maximum drawbar section, it includes a 5-1/2-in. equal-angle hitch.



BE23596 Console Mounting Brackets 3955 and 3975
(Sound-Gard Body)

BE24138 Console Mounting Brackets 3955 and 3975
(6000, 7000 and 8000 Series)

BE32481 Console Mounting Brackets 3955 and 3975
(Open-Station 6000 and 7000 Series)

These brackets are required for installation of the electrohydraulic control console.



BE24136 Short Tongue Assembly 3950, 3955, 3970
and 3975

BE24137 Long Tongue Assembly 3950, 3955, 3970
and 3975

Match the tongue assembly for your application. The long tongue is required for three-row row-crop heads.



BE24139 Hay Pickup Float System 3955 and 3975

The hay pickup float system provides up and down float when operating with 5-1/2-ft or 7-ft hay pickup. Gauge wheels are required on the pickups for operation.



BE24140 Unloader Valve Kit 3955 and 3975

This kit is required if the harvester will be operated with open-center hydraulics on the tractor.



BE24141 Additional Control Console 3955 and 3975

This is for forage harvesters used with more than one tractor. Switches are included for harvesting unit lift, feedroll shift, spout rotation, spout cap control, and tongue swing.



BE24142 Electric Downstop 3955 and 3975

Electric down-stop control allows the operator to preset the desired cutting height of row-crop heads.



BE24147 Hydraulic Control Wagon 3955 and 3975
Disconnect

With this bundle, the operator can disconnect from the wagon by simply pushing on a toggle switch on the electrohydraulic valve console.



BE24174 Kernel Processor 3975

By processing corn silage, more surface area is created for the microbes (the bacteria in a cow's stomach) to digest the fibrous material and transfer the available starch into energy. When more feed is digested, more energy is available to the animal. When more energy is available, it can result in greater milk production and daily gain efficiency.



BE24225 Cantilever Cross Auger 3950, 3955, 3970
and 3975

Use the cantilever cross auger with long material, particularly grassy crops. It is recommended when in alfalfa, or when using less than the standard number of knives with a long length of cut.



BE24234 Crop Deflector 3960, 3970 and
3975

The crop deflector is recommended when harvesting with a two-row row-crop narrow unit and a 3960, 3970, or 3975 Forage Harvester with a kernel processor. The bundle includes a metal bar extension that mounts to the harvesting unit to guide crop away from the right-hand side pull-type forage harvester wheel.



BE24262 Safety Chain 3970 and 3975

Use the 30,000-lb safety chain for towed equipment with the 3955 and 3975 Pull-Type Forage Harvesters.



BE24288 Anti-carryover Shield 3975

The anti-crop deflection shield contains a rubber shield placed between the upper front and back feedrolls to prevent corn ears from carrying over the feedrolls.



BE30002 Kernel Processor Shields 3960, 3970 and 3975

BE30003 Complete Kernel Processor 3960, 3970 and 3975
(Includes BE30002)

A John Deere-designed and engineered kernel processor (KP) is available for field installation on the 3975 Pull-Type Forage Harvesters. The KP can be retrofitted on the 3960 and 3970 models as well.



BE32242 Hay Pickup Float System 3955 and 3975

The hay pickup float system provides up and down float when operating with 5-1/2-ft or 7-ft hay pickup. Gauge wheels are required on the pickups for operation.



Section 8: Large Square Balers

BE32262 Rubber Drawbar Shield L330 and L34

A drawbar shield helps to prevent windrow bunching that can occur when the drawbar contacts heavy windrows.



BE32553 Quick Fill Lube Kit L330 and L340

This kit is available for refilling the automatic lubrication reservoir.



BE32569 LED Field Lights L330 and L340

Optional LED lights are available for the two rearward facing lights for improved visibility behind the machine compared to conventional halogen lights.



BE32570 Knife Filler Plates L330

BE32571 Knife Filler Plates L340

When precutter knives are removed, knife slot fillers can be installed instead. Knife slot fillers help to keep knife slots clean, and ensure a uniform crop flow over cutting unit floor.



BE32572 Flywheel Cam Clutch L330

A cam clutch is available for added protection and durability to replace the shear bolt protected clutch.



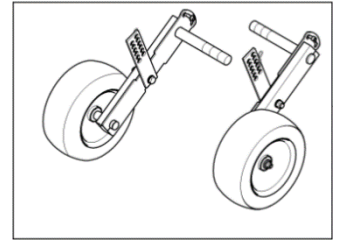
| | | |
|---------|-------------------------------------|---------------|
| BE32574 | PTO Driveline 1-3/8 In. 1000 RPM | L330 and L340 |
| BE32575 | PTO Driveline 1-3/4 In. 1000 RPM | L330 and L340 |

Different driveline options are available to match the tractor PTO.



| | | |
|---------|--------------------|------|
| BE32580 | Fixed Gauge Wheels | L330 |
| BE32578 | Fixed Gauge Wheels | L340 |

Standard fixed pickup gauge wheels provide smooth ground gauging over uneven terrain and protection to the pickup.



| | | |
|---------|-----------------------|------|
| BE32581 | Pivoting Gauge Wheels | L330 |
| BE32579 | Pivoting Gauge Wheels | L340 |

Optional pivoting gauge wheels reduce sliding and scuffing of the tires in the field when the baler turns.



| | | |
|---------|--------------|---------------|
| BE32582 | Safety Chain | L330 and L340 |
|---------|--------------|---------------|

30,000 lb. safety chain for towed equipment.



| | |
|------------|--------------------------------|
| SWBE32568 | Wireless Baler OBS Kit |
| SWBE32595 | Wireless Camera Kit (add-on) |
| SW31200050 | Harness 4' for Wireless Camera |
| SWVMAGBASE | Magnet Mount Base for Camera |

Easily monitor baler functions from the tractor cab with up to four different recommended locations: tension hoop to view bale chute, axle frame to view slack arms, left- hand knotter side shield to view knotters or tongue to view pickup.

