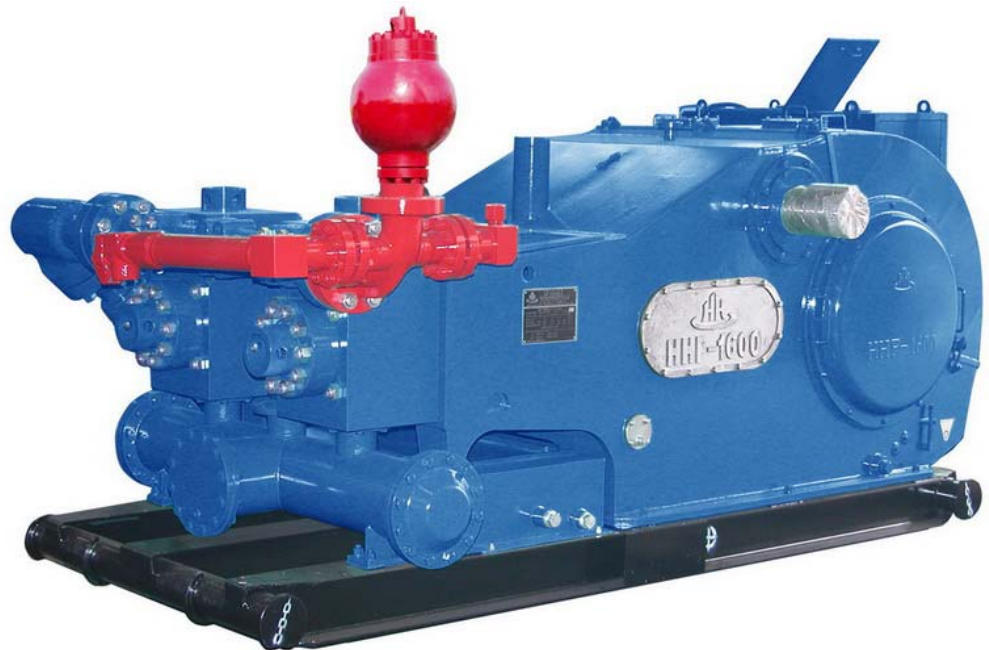




**HONGHUA AMERICA, LLC**

## HHF-1600 Mud Pump



**(832) 448.8100**

**[www.hh-america.com](http://www.hh-america.com)**



**HONGHUA Group ( HH)** HHF series mud pump is tough and field-proven, is specifically equipped to meet almost any customer requirement.

We have provided more than 1000 sets in the world-wide. This is backed by our warranty and field support program. And the HHF-1600 pump is one of the most acceptable and developed mud pump.

HHF-1600 mud pump is made of high quality material, according to API 7K specification. And HHF-1600 mud pump is a kind of F series, triplex single-acting piston mud pump. The seal packing, bearing and connection size are exchangeable with EMSCO F-1600 mud pump.

## Specification

▪ <b>Rated input power</b>	<b>1600HP (1193 KW)</b>
▪ <b>Rated Stroke</b>	<b>120 SPM</b>
▪ <b>Max. liner Di a.</b>	<b>7" ( 177.8 mm)</b>
▪ <b>Rated Stroke distance</b>	<b>12" ( 304.8 mm)</b>
▪ <b>Gear Ratio:</b>	<b>4.206: 1</b>
▪ <b>Suction pipe size:</b>	<b>12" (304.8mm), Flanged</b>
▪ <b>Discharge pipe size:</b>	<b>API 5 1/8" Flanged, 5000psi</b>
▪ <b>Max. discharge pressure</b>	<b>5000psi ( 34.5 Mpa)</b>
▪ <b>Max. discharge flow</b>	<b>780 gpm ( 49.21 L/s)</b>
▪ <b>Valve chamber size:</b>	<b>API 7 #</b>
▪ <b>Lubrication:</b>	<b>Forced and splash</b>
▪ <b>Discharge flow and pressure:</b>	<b>please reference table 1 and table 2</b>





Table 1: Pressure parameter for mud pump HHF-1600

Diameter of Liner	7"	6 ¾"	6 ½"	6"	5 ½"	5"
Rated pressure (MPa-psi)	3430 psi 23.6 MPa	3690 psi 25.4 MPa	3978 psi 27.4 MPa	4668 psi 32.2 MPa	5000 psi 34.5 MPa	5000 psi 34.5 MPa

Table 2: Discharge parameter for mud pump HHF-1600

Stroke (spm)	Rated power		Discharge capacity GPM					
	kW	HP	7"	6 ¾"	6 ½"	6"	5 ½"	5"
130	1293	1734	780	725	672	573	481	398
120*	1193*	1600*	720	669	621	529	444	367
110	1094	1467	660	613	569	485	407	337
100	995	1334	600	558	517	441	370	306
90	895	1200	540	502	465	397	333	275
80	796	1067	480	446	414	353	296	245
70	696	933	420	390	362	308	259	214
1	-	-	6.00	5.58	5.17	4.41	3.70	3.06

*Notes:*

1. Calculated as per volumetric efficiency (100%) and mechanical efficiency (90%).
2. \* shows rated stroke numbers while operating.





## Dimension

- **Transport dimension**

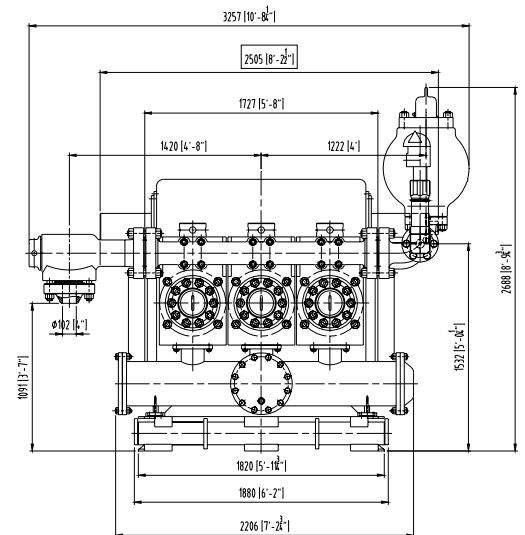
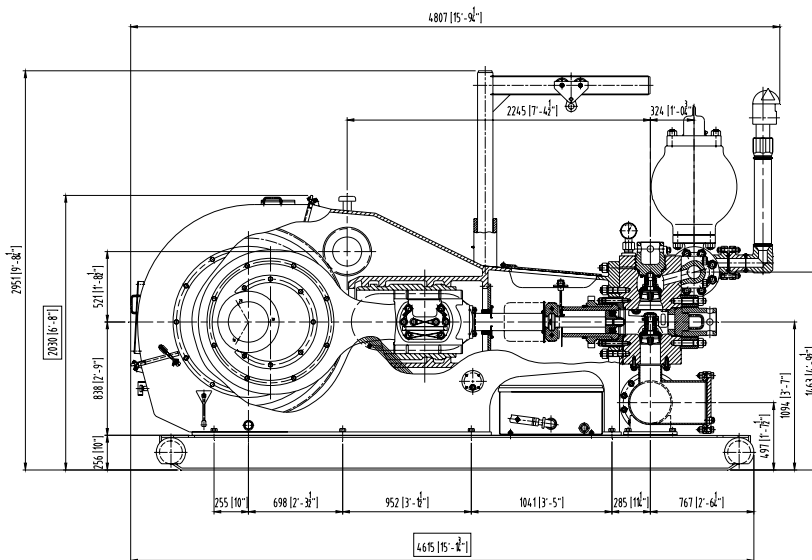
**Length** **15'-1 3/4" ( 4065mm)**

**Width** **8'- 2 1/2" (2505mm)**

**Height** **6' – 8" (2030mm)**

- **Weight ( without damper)**

**57540 lbs (26100 kg)**



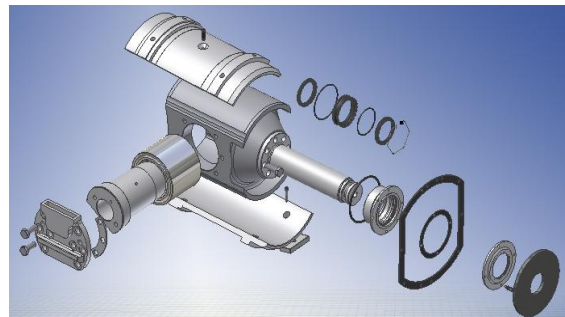


## Equipment scope

- Mud pump with a liner
- Damper and safety valve
- Equipped with Hoister.
- Completed with spare parts , special tools and fits



- We also maintain spare parts for you all requirements.



***Please contact us if you need more information!***

***Honghua, America, LLC***

***8300 McHard Road, Houston, TX 77053***

***Tel : (832) 448.8100***

***Fax : (832) 448.8101***

***E-mail: sales@hh-america.com***

***Website: www.hh-america.com***

