



## HP Asset Manager software

Comply. Optimize. Govern.

Companies build value through the delivery of high-quality and cost-effective services. IT organizations are at the forefront of making certain these goals are met. IT is challenged to reduce costs, mitigate security and compliance risks, and provide information to drive business decisions. IT asset management plays a major role in addressing these challenges.

Caught between cost and compliance, service level and outsourcers, IT organizations struggle to fully explain the value they provide to the business, at almost all major levels. In order to solve this problem, your IT group must take a step back and fully evaluate your asset management practices, and make a deliberate effort to evolve those practices to deliver a predictable and valued level of service.

Managing IT asset lifecycles effectively is no longer optional—it is critical.

At HP, we can help you achieve these objectives. The HP Asset Manager software solution helps your IT team deliver high-quality, cost-effective services. For nearly two decades, organizations around the world have used HP Asset Manager to enhance service and asset costs, mitigate security and compliance risks, and align IT with business objectives. Today, with so much to do and so little time, HP Asset Manager provides your IT team with one of the most comprehensive solutions for automating and maintaining tight control over your company's capital investments.

### **A foundation for business-based IT**

HP Asset Manager serves as the foundation for your IT organization to measure and communicate the value it provides to the businesses it supports. In today's competitive and ever-changing environment, IT demands a thorough understanding of the financial, operational and contractual relationships of assets to allow the organization to increase return on its IT investment.

HP Asset Manager drives IT operations and decision making by:

### **Aligning IT with business objectives**

- Measure total cost of ownership.
- Directly tie IT cost to business unit consumption.

Figure 1. Detailed information on each configuration item.

Name	Rights count	Entitlements count	Installations/Utilizations count	Unused installations	No of records in the scope	Do not include in the compliance reports	Is part of corporate software management
Count anti-virus licenses and installations per user	13	0	49	0	64	Yes	No
Count Sales Management software	1	0	87	0	4	Yes	No
Count Office installations and license points	338	0	471	30	64	Yes	No
Count Office licenses and installations per user	39	0	142	1	64	Yes	No
Count Office licenses and installations at Talkex per user	9	0	69	0	44	Yes	No
Count Office licenses and installations per company	39	0	142	1	37	Yes	No
Count PDA entitlements	4	0	3	0	64	Yes	No
Count EMS licenses and installations per coat center	338	0	284	18	64	Yes	No
Count Designer licenses and installations per coat center	676	0	426	27	64	Yes	No
Count HP AssetCenter licenses and installations per coat center	169	0	142	9	64	Yes	No
Count Winzip licenses and installations per coat center	338	0	284	18	64	Yes	No
Count Acrobat licenses and installations per coat center	507	0	71	0	64	Yes	No
Count WinRAR 3.10	0	0	4	0	64	Yes	No
Count WinRAR 3.20	40	0	30	0	64	Yes	No
Count WinRAR 3.30	50	0	68	0	64	No	No
Count WinRAR 3.40	10	0	4	0	64	No	No
Count WinRAR Upgrade 3.30	10	0	0	0	64	No	No

- Align business services to their supporting assets and contracts.
- Gain a common vehicle to communicate IT value to the business.
- Prepare for and adapt to constant change.

#### Enhancing service and reducing asset costs

- Effectively manage contracts, leases, license agreements and warranties.
- Streamline the fulfillment of goods and service requests from the service catalog
- Avoid potential penalties by using license management automation.
- Chargeback for usage of IT services to the individual business unit.
- Allocate penalty fees for the associated breached service level agreements (SLAs) and service downtime.
- Extend hardware lifecycles.
- Complete asset and project expense audit tracking.
- Enable fixed asset and invoice reconciliation.

#### Mitigating security and compliance risks

- Quantify and measure financial compliance risks of IT infrastructure.
- Prepare for software audits by using standards and automated processes.
- Enforce software and hardware standards to enable system security and continuity.

- Build a baseline for physical security.
- Determine current license compliance status.

## HP Asset Manager software

### Extensive, integrated application suite

HP Asset Manager software is a lifecycle asset management solution with best practices designed to simplify your use of the tool and creation of supporting processes. Years of experience with customers allows us to provide your organization with a system that is scalable, adaptable to your needs and easy to use.

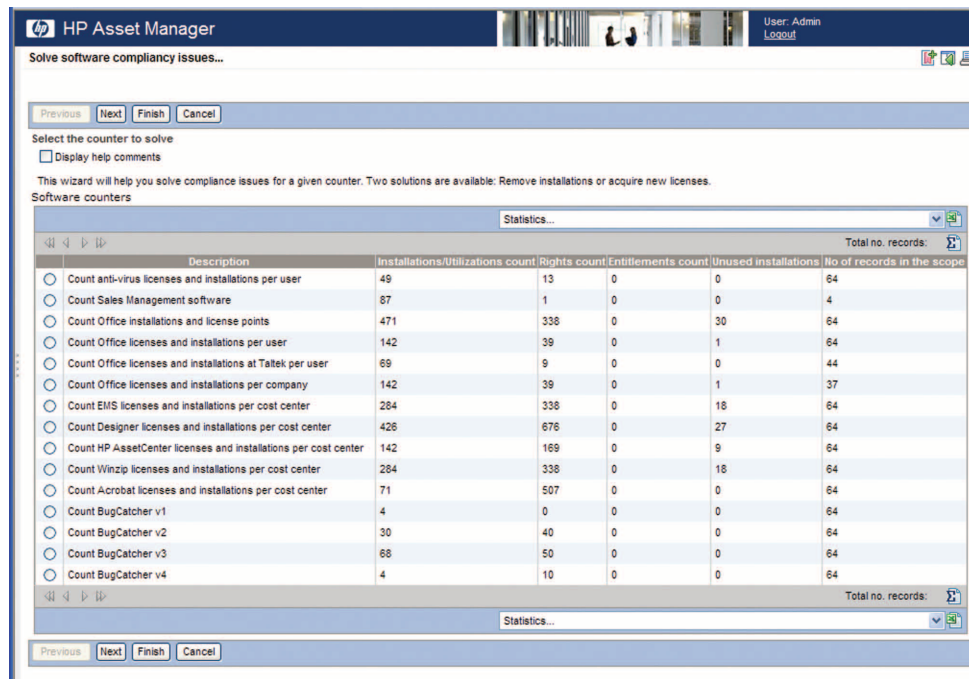
## Modular components

### HP Asset Manager Portfolio Management module

HP Asset Manager Portfolio Management simplifies asset tracking by consolidating assets and each configuration item into a central repository. This repository allows users of all HP Asset Manager applications to view and utilize the information and see relationships to other assets. As servers and applications are consolidated, your business units can share utilization and allocate costs correctly by using the powerful HP Asset Manager Portfolio Management configuration options.

HP Asset Manager Portfolio Management is at the heart of every HP Asset Manager implementation. It defines and manages the complex relationships among assets, contracts and costs, providing consistent and accurate inventory information.

**Figure 2.** Determine your current license compliance status using HP Asset Manager software.



### Key benefits

- Enables management of complex business services
- Provides a powerful and customizable workflow engine
- Enhances management of the asset lifecycle
- Administers and prioritizes IT projects and associated costs
- Provides a strong repository with the ability to model the assets and their management rules
- Allows multi-source, multi-level reconciliation
- Provides global platform for multi-language and multi-time-zone support

### HP Asset Manager Software Asset Management module

HP Asset Manager software provides a simple, standardized and proactive way to manage software license compliance. Using a central repository of existing contracts, HP Asset Manager software associates software purchase invoices with each software license agreement. Contractual and expense data are also collected to provide reconciliation reports from the physical inventory stored in HP Asset Manager Portfolio Management. HP Asset Manager software also manages entitlement to help control your software usage costs and promote internal compliance. This level of control allows for greater software optimization, as the usage of assets can be attributed and tracked to enforce standard rules and policies.

### Key benefits

- Increases software utilization with a powerful reconciliation engine
- Enables software compliance
- Tracks VM environments to facilitate compliance
- Manages entitlement and usage
- Simplifies processes by establishing discrete user profiles and tasks
- Facilitates complex software license type management
- Provides usage tracking and reconciliation to allow for greater cost savings

### HP Asset Manager Procurement module

HP Asset Manager Procurement automates and streamlines the entire request lifecycle. It verifies each request against corporate approval standards by checking against a catalog of approved assets. It monitors existing stocks and budgets so that requests are filled through available inventory whenever possible. Users generate and reconcile purchase orders against assets received from the vendor.

### Key benefits

- Controls all procurement processes and enforces company standards
- Reconciles assets against purchase orders
- Checks available stock before procuring new items

**Figure 3.** Use HP Asset Manager to measure overall IT expenditures.

The screenshot shows the HP Asset Manager interface. At the top, it says 'HP Asset Manager' and 'User: Admin Logout'. Below that is a navigation bar with 'Previous', 'Next', 'Finish', and 'Cancel' buttons. The main content area is divided into two sections:

**Counters linked to 'Count WinRAR 3.10' - details**  
List of software counters that can transmit rights

Name	Calculated on	Rights count	Installations/Utilizations count	Maximum consolidated rights count	Consolidated rights count	Compliance	Consolidated compliance
Count WinRAR 3.40	2008/03/17 10:58:06	10	4	10	10	6	6
Count WinRAR 3.30	2008/03/17 10:58:09	50	68	60	60	-8	-8
Count WinRAR 3.20	2008/03/17 10:58:11	40	30	30	30	0	0
Count WinRAR 3.10	2008/03/17 10:58:14	0	4	0	0	-4	-4

**List of software upgrade counters**

Name	Upgrade from	Upgrade to	Rights count	Number of transferred rights
Count WinRAR Upgrade 3.30	Count WinRAR 3.20	Count WinRAR 3.30	10	10

- Streamlines the fulfillment lifecycle
- Integrates with asset, service and supplier catalogs
- Enables out-of-the-box enterprise resource planning (ERP) integration
- Provides comprehensive control over processes through visualization of approval workflow

### HP Asset Manager Financial Management module

Align asset investments for improved business value. HP Asset Manager Financial Management captures, monitors and manages all costs associated with an asset, from acquisition through retirement.

HP Asset Manager Financial Management makes it easy to track costs associated with every asset at every stage in its lifecycle, including expenses related to capital and operations. Your IT organization can easily report on these costs by budget, cost center or total cost of ownership. HP Asset Manager Financial Management also associates and reconciles fixed assets with assets in HP Asset Manager Portfolio Management, so your management can fully understand the financial impact of asset service and disposition.

#### Key benefits

- Enables comprehensive budget management
- Defines tax rates and calculates tax liability
- IT Infrastructure Library (ITIL) aligned terminology based on defined best practices
- Reports based on HP IT Financial Management

software budget best practices

- Tracks and attributes cost per business unit
- Calculates depreciation on fixed asset
- Calculates total cost of ownership at multiple levels (i.e. asset, business service and asset model by category)

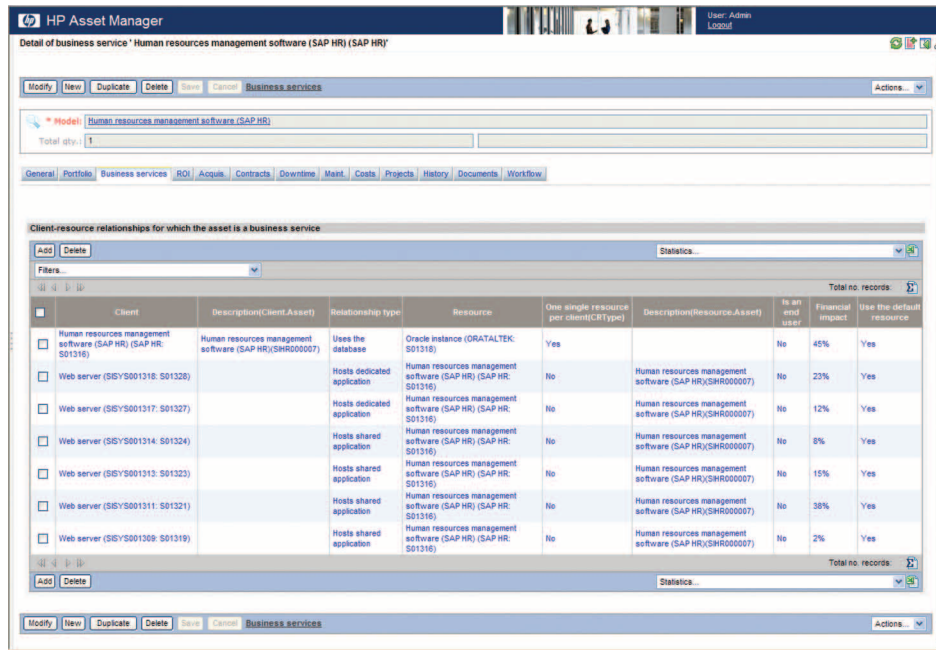
### HP Asset Manager Chargeback module

Chargebacks institute invoicing and chargeback programs to specific business units. This automated cost-allocation process enables charges to be made consistently and in accordance with business rules. HP Asset Manager Chargeback provides maximum visibility into the financial impact of IT support and services. Your business units are empowered—and encouraged—to make informed decisions about the service and availability levels they request. The flexible design of HP Asset Manager Chargeback software allows your IT organization to issue chargebacks based on multiple events, such as a move, service or asset. Calculations can be based on fixed cost, a percentage of the total cost or usage, and can be easily applied to any entity (i.e. business unit, asset or employee).

#### Key benefits

- Helps you to manage expense against individual business units
- Provides visibility of expense per cost center
- Enables cost recovery through chargebacks of various types of expenses to business units

**Figure 4.** Measure and communicate the total cost of ownership of business services.



- Allows calculations to be based on fixed cost, a percentage of the total cost or usage, and can be applied to any entity (i.e. business unit, asset or employee)
- Helps chargeback individual business units for utilized services
- Associates penalty fees for breached service level agreements

#### **HP Asset Manager Contract Management module**

HP Asset Manager Contract Management simplifies, automates and improves the business processes related to contract management. It tracks contract terms and conditions and sends automatic notifications of important dates, such as contract expirations. HP Asset Manager Contract Management also provides critical data that helps your organization manage vendor relationships, and it forms the basis for future planning and negotiations. The result: lower total cost of asset ownership.

#### **Key benefits**

- Manages the asset lifecycle from request and procurement through to retirement
- Works in conjunction with accounting and ERP systems to enable governmental compliance and reduce auditing costs and penalties and over-purchasing

#### **HP Asset Manager Cable Management module**

HP Asset Manager Cable Management manages physical network connectivity inside and outside your

organization's infrastructure, including your local area network (LAN), wide area network (WAN), and technology for voice and data services.

HP Asset Manager Cable Management extends the repository in HP Asset Manager by collecting, managing and reporting on information obtained about cable and circuit data throughout the IT asset lifecycle.

#### **Key benefits**

- Works to reduce contract costs
- Allows IT to manage and understand the physical relationship between assets and various cross-connections
- Helps IT manage work orders more effectively

#### **HP Connect-It Web Services software**

HP Connect-It Web Services provides interoperability between software applications running on disparate platforms. Using Simple Object Access Protocol (SOAP) technology to establish a standard messaging framework, HP Connect-It Web Services software makes it easy for developers to naturally access objects within multiple and customized data fields. The open architecture allows for real-time integration and the simple exposure of objects to external applications. HP Connect-It Web Services introduces enterprise applications as modular business services that can be easily integrated from different locations and reused. This helps your company establish truly flexible applications for an adaptable IT infrastructure.

### Key benefits

- Uses open standards and protocols and allows reuse of services and components
- Can combine multiple web services
- Uses HTTP/HTTPS to work through common firewall security measures without requiring changes to the firewall filtering rules
- Reuses services and components
- Facilitates open integration to other systems
- Provides a standard framework with a consistent and dynamic application program interface (API) architecture for process-based integration

## HP Asset Manager and beyond

### Advanced, scalable architecture

HP Asset Manager software is designed for enterprise class organizations and can scale to meet the most demanding requirements. Supporting a service-oriented architecture, HP Asset Manager extends its capabilities through direct integrations, out-of-the-box connectors and web services.

Global enterprise organizations also benefit from unicode, multi-client support and distributed system capabilities that enable 24x7, “follow-the-sun” asset management practices.

An intuitive user interface provides dynamic charts, graphs and customizable windows for both Microsoft® Windows® and web client users.

### Powerful customization and administrative tools

HP Asset Manager provides broad, out-of-the-box functionality, as well as extensive tailoring flexibility to adapt to your company’s unique processes and requirements, without the need to customize source code. HP Asset Manager provides customization and administrative tools for complete system management, including:

- A full-featured tailoring toolkit that uses both basic and advanced query languages
- A broad suite of system administrative tools that includes archiving and purge of data management and all the benefits of a J2EE application server hosted application (failover)
- A high level of customization of the user interface
- A powerful customizable workflow and wizard engine

### Multiple levels of users map to license level

HP Asset Manager provides specific licensed user types based on a user’s skill level and needs. At the very basic license level, a user can perform simple activities, such as requesting a catalog item. More advanced users, such as an administrator, can be licensed for greater usage and deeper access to the modular components.

As a result, your administrators can perform more advanced tasks. The different license levels help meet each user’s unique needs and are more cost effective to your business.

### Multiple languages supported for the global enterprise

HP Asset Manager is available in English, Japanese, French, Italian, German, Spanish, Russian, Korean and simplified Chinese.

## Complementary products

HP asset management solutions include the following supporting products.

### **HP Service Manager and HP Service Desk**

Out-of-the-box integrations to both HP Service Manager software and HP Service Desk software provide customers end-to-end adaptive management capabilities to streamline operations and lower costs. The asset base can be easily reconciled with other configuration items (CIs) to track the total costs of goods and services. This provides a greater understanding of total cost of ownership.

### **HP ServiceCenter Catalog module**

HP ServiceCenter Catalog provides organizations with an IT shop window of all the goods and services that are available to the business. Out-of-band (OOB) integrations to HP Asset Manager streamline the fulfillment and approval process, so that requested goods can be fulfilled at the lowest cost to the business.

### **HP Project and Portfolio Management (PPM) Center software**

HP PPM Center software out-of-the-box integration to HP PPM Center provides customers the ability to track the capital and operational costs of a project for total cost roll up. The bi-directional integration allows users to easily understand labor versus non-labor costs so that the overall health of a project can be easily tracked and assessed.

### **HP Client Automation software**

With the integrations to HP Client Automation, configuration management inventory and software usage data can be easily populated in HP Asset Manager

and reconciled against the asset record (purchase order, contract). The ability to offer license availability before distribution helps prevent software overspend as well as verifies that license distribution is driven by user entitlement. This integration allows customers to quickly and easily identify over-licensed software and remove it from their environment.

### **HP Discovery and Dependency Mapping Inventory software**

HP DDMI (previously known as HP Enterprise Discovery software) automatically discovers and inventories software, hardware and networked devices across the infrastructure and supplies detailed configuration information for effective UCMDB management.

### **HP DecisionCenter Business Impact Analytics module**

HP DecisionCenter Business Impact Analytics is a business intelligence tool for advanced analytics and data mining that transforms detailed operational data from HP Asset Manager into meaningful, business-focused intelligence. Leveraging the HP Reporting Data Store as a foundation, HP DecisionCenter Business Impact Analytics provides a pre-defined set of metrics, giving your users a consolidated view of their business variables and dimensions, enabling them to analyze standardized business data from any number of perspectives.

### **Integration connectors**

HP Connect-It software creates tests and administers integration scenarios between HP Asset Manager and a wide variety of other external applications. HP Connect-It leverages industry-standard protocols and connects with third-party information systems, including HP OVO, NNM, SAP, BMC, CA and IBM.

## A complete solution

### Comprehensive training

HP provides a comprehensive curriculum of HP Software and IT Service Management courses. These offerings provide the training you need to realize the full potential of your HP solutions, increase your network optimization and responsiveness, and achieve better return on your IT investments.

With more than 30 years experience meeting complex education challenges worldwide, HP knows training. This experience, coupled with unique insights into HP Software products, positions HP to deliver the optimum training experience. For more information about these and other educational courses, visit [www.hp.com/learn](http://www.hp.com/learn).

### The smartest way to invest in IT

HP Financial Services provides innovative financing and financial asset management programs to help you cost-effectively acquire, manage and ultimately retire your HP solutions. For more information on these services, contact your HP sales representative or visit [www.hp.com/go/hpfinancialservices](http://www.hp.com/go/hpfinancialservices).

## Contact information

To find an HP Software sales office or reseller near you, visit [www.managementsoftware.hp.com/buy](http://www.managementsoftware.hp.com/buy).

## HP Services

### Get the most from your software investment.

With HP, you have access to standards-based, modular, multi-platform software coupled with global services and support, for all aspects of your software application lifecycle needs. The wide range of HP service offerings—from online self-solve support to proactive mission-critical services—enables you to choose the services that best match your business needs.

For an overview of HP software services, visit [www.managementsoftware.hp.com/service](http://www.managementsoftware.hp.com/service).

To access technical interactive support, visit Software Support Online at [www.hp.com/managementsoftware/services](http://www.hp.com/managementsoftware/services).

To learn more about HP Software Customer Connection, a one-stop information and learning portal for software products and services, visit [www.hp.com/go/swcustomerconnection](http://www.hp.com/go/swcustomerconnection).

### Service management services

With service management, HP Services professionals help you fine-tune your people, processes and technology to transform and continually improve the way your organization delivers IT services. To learn more, visit [www.hp.com/services/itsm](http://www.hp.com/services/itsm).

### Support services for infrastructure software

The HP Software Technical Support and Software Update Services enable all of your HP ProLiant Essentials and HP Insight Control software to be supported in a single offer. To learn more, visit [www.hp.com/services/ProLiantEssentialservices](http://www.hp.com/services/ProLiantEssentialservices).

### HP Mission Critical and Proactive Services

HP Mission Critical and Proactive Services help you proactively avoid downtime, and the resulting impact to your business. The services are delivered by availability experts and business-critical consultants who are trained and certified in their areas of expertise. For more information, visit [www.hp.com/services/missioncritical](http://www.hp.com/services/missioncritical).

For more information, visit [www.hp.com/software](http://www.hp.com/software)

© Copyright 2006–2008 Hewlett-Packard Development Company, L.P. The information contained herein is subject to change without notice. The only warranties for HP products and services are set forth in the express warranty statements accompanying such products and services. Nothing herein should be construed as constituting an additional warranty. HP shall not be liable for technical or editorial errors or omissions contained herein. Microsoft and Windows are U.S. registered trademarks of Microsoft Corporation.

4AA0-5584ENW Rev. 3, May 2008



Technology for better business outcomes