

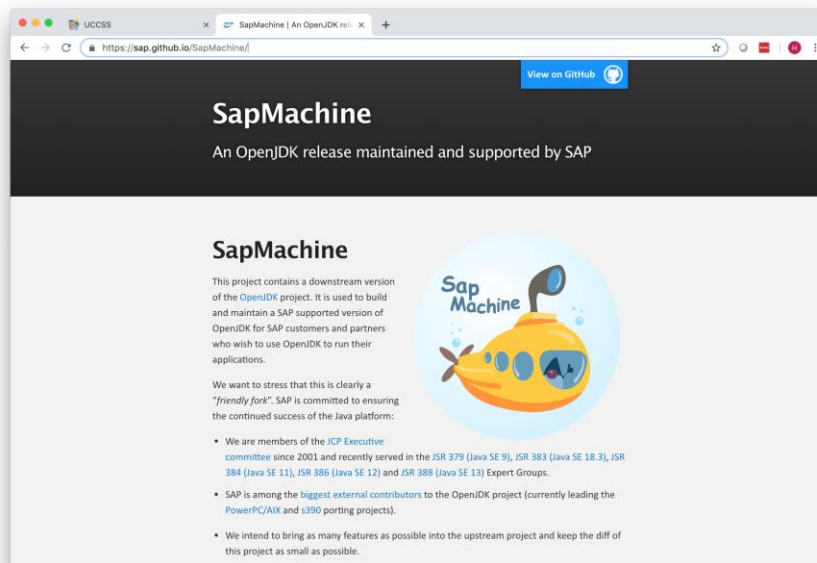
Installation Guide: SAP GUI 7.50 Java for Mac OS

Notes:

- This document is based on the Mac OS Mojave 10.14.3 release.
- Due to Oracle's new Java licensing model, the installation process has become slightly more complicated. Previous installation guides are no longer valid.
- SapMachine and JavaFX are required and replace the Java JDK used previously.
- New software versions are released continuously so the version numbers may not match those found in this document.

Install SapMachine

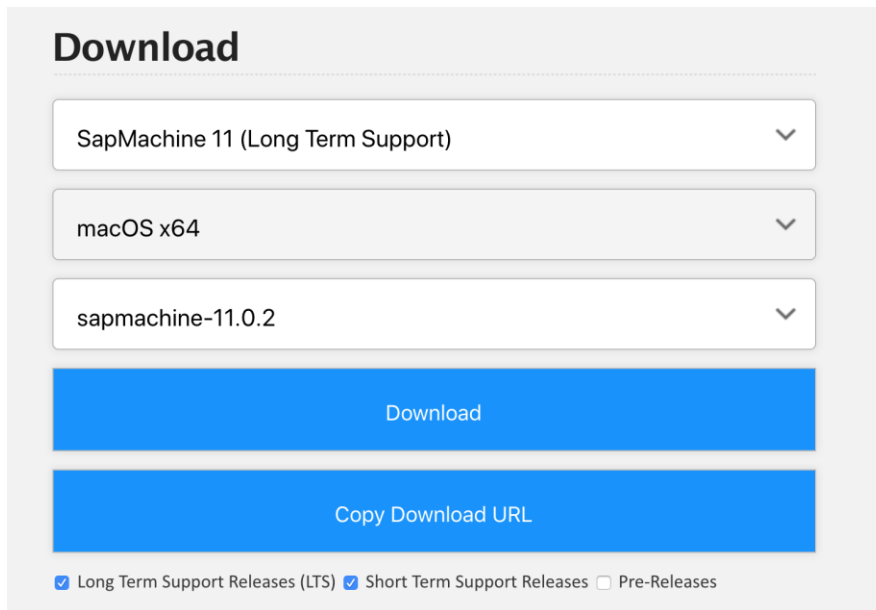
- 1) Go to the following URL:
<https://sap.github.io/SapMachine/>



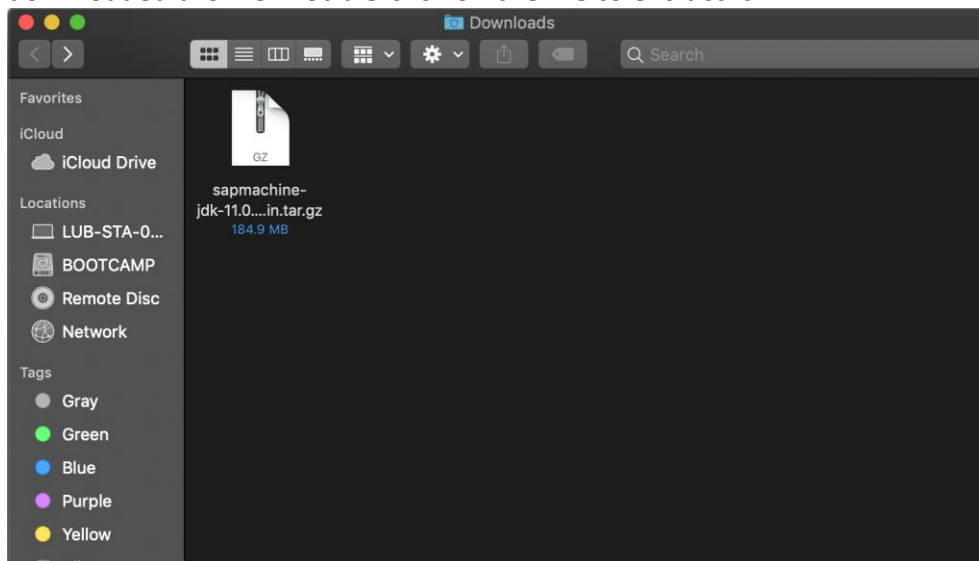
- 2) Scroll down and you should see the download section. Choose the following:

First Dropdown: SapMachine11
Second Dropdown: macOS x64
Third Dropdown: *Leave the default entry*

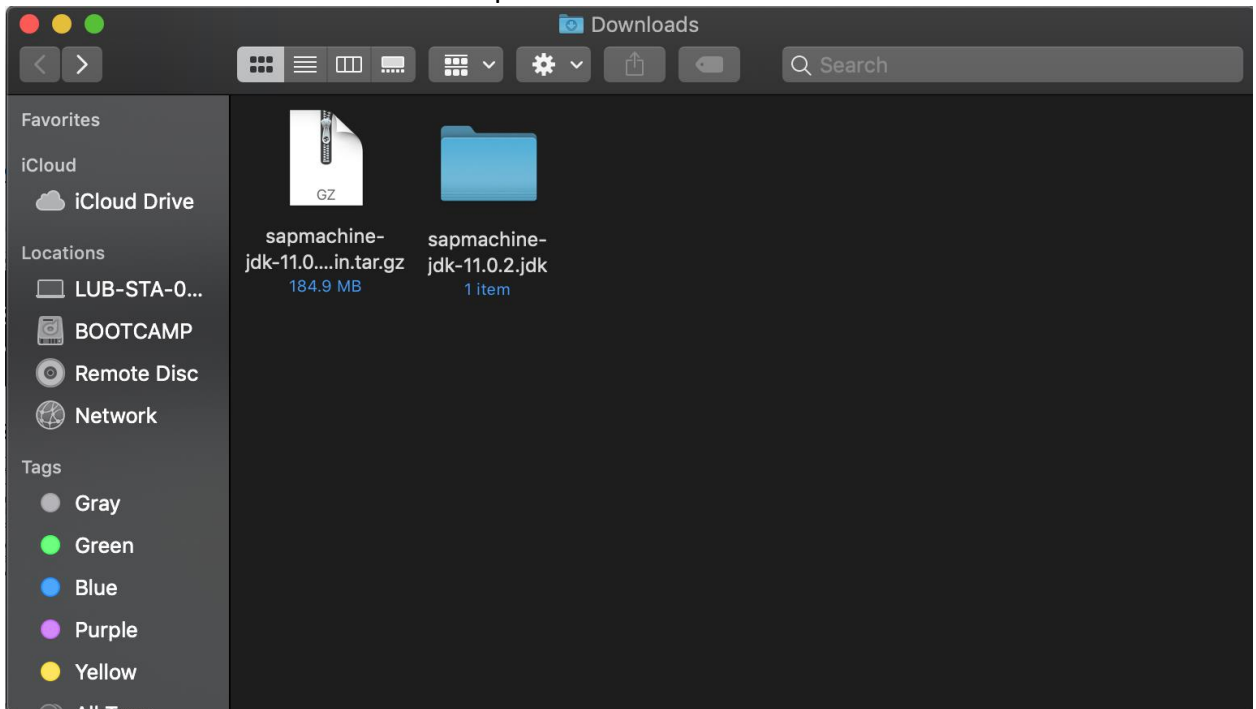
Press **Download**.



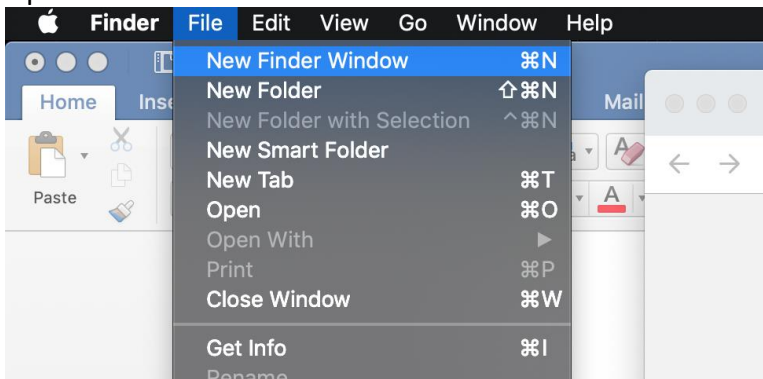
- 3) The file will be downloaded and placed in your Downloads folder (or possibly another directory based on your settings). Open Finder and go the directory where you downloaded the file. **Double-click on the file to extract it.**



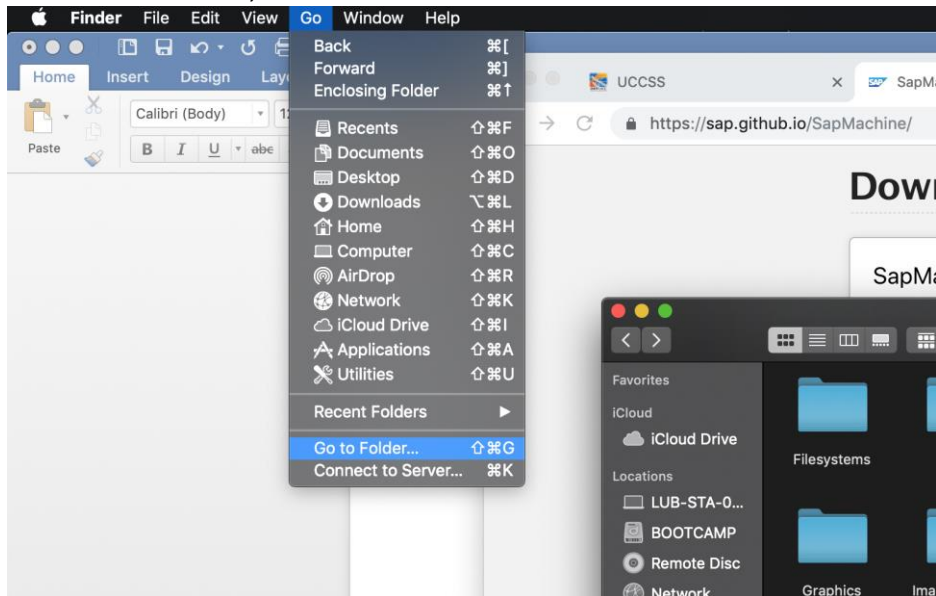
4) You should now see the extracted “sapmachine” folder.



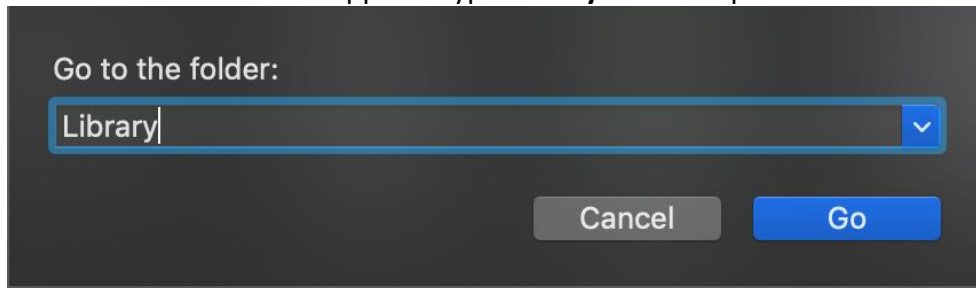
5) Open a new Finder window.



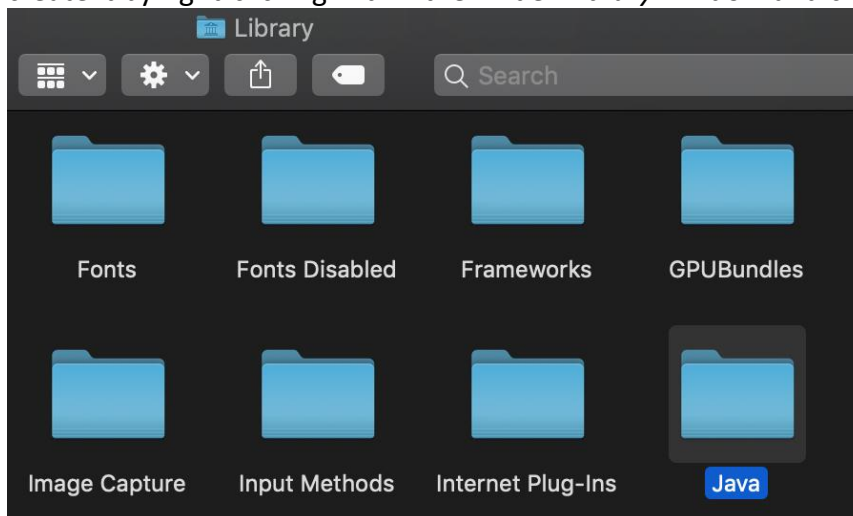
- 6) In the finder menu, select **Go > Go to Folder...**



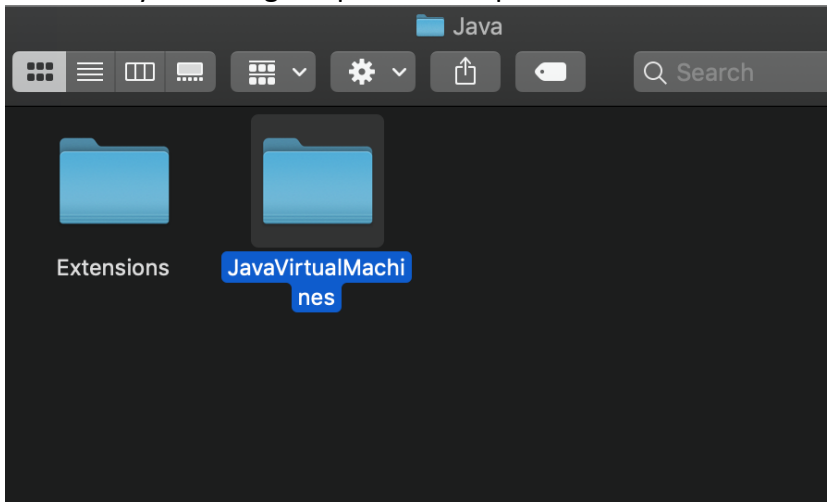
- 7) A search window should appear. Type **Library** and then press **Go**.



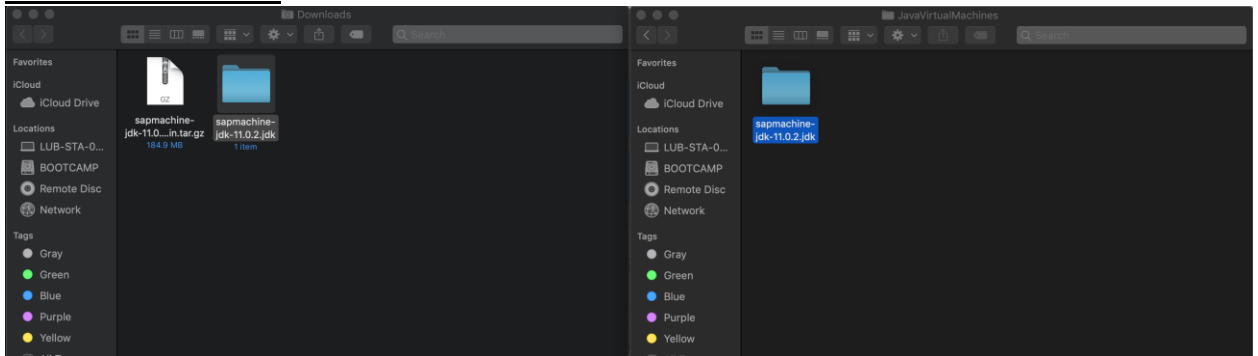
- 8) Navigate to the folder named **Java** and double-click on it. If it does not exist, you can create it by right-clicking within the Finder *Library* window and clicking New Folder.



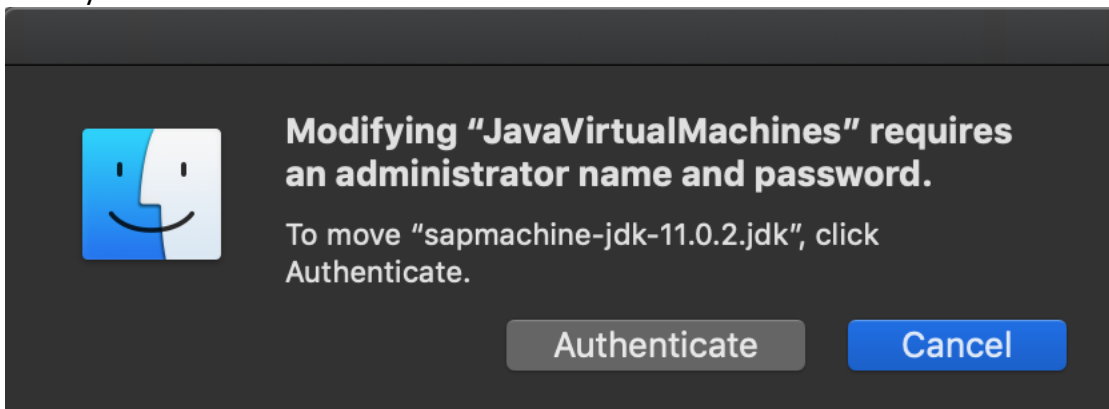
- 9) Now double-click on the **JavaVirtualMachines** folder. Again, if it does not exist, you can create it by following the previous step.



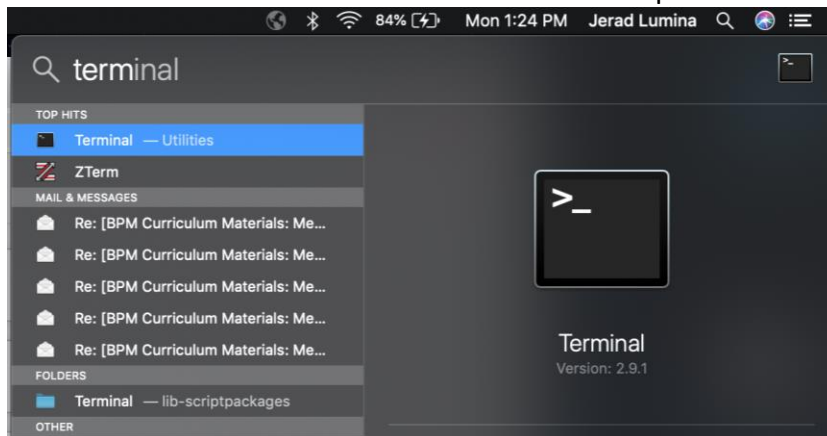
- 10) Now bring up your *Downloads* Finder window and your *JavaVirtualMachines* Finder window side-by-side and drag the extracted *sapmachine* folder from Downloads to JavaVirtualMachines.



- 11) You will be prompted for Administrator user credentials. Please press Authenticate and enter your credentials.



- 12) Now in the top-right corner of the screen, click on Spotlight (the magnifying glass) and search for **terminal**. Double-click on Terminal to open it.



- 13) To verify that SapMachine was installed correctly, type **java -version** and press **Enter**. You should receive a response similar to what is shown below. The version number may be different but you should see a reference to “sapmachine” in the last couple of lines.

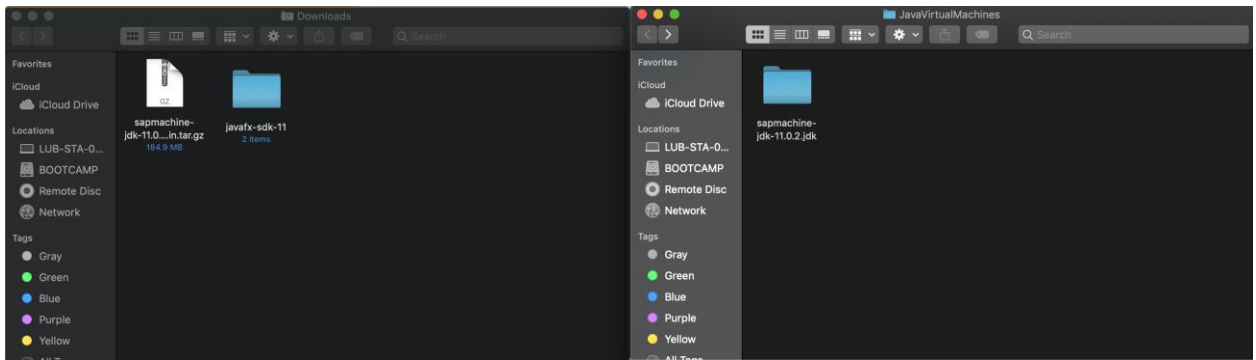
```

jeradlumina — -bash — 80x24
[LUB-STA-055:~ jeradlumina$ java -version
openjdk version "11.0.2" 2019-01-16 LTS
OpenJDK Runtime Environment (build 11.0.2+0-LTS-sapmachine)
OpenJDK 64-Bit Server VM (build 11.0.2+0-LTS-sapmachine, mixed mode)
LUB-STA-055:~ jeradlumina$

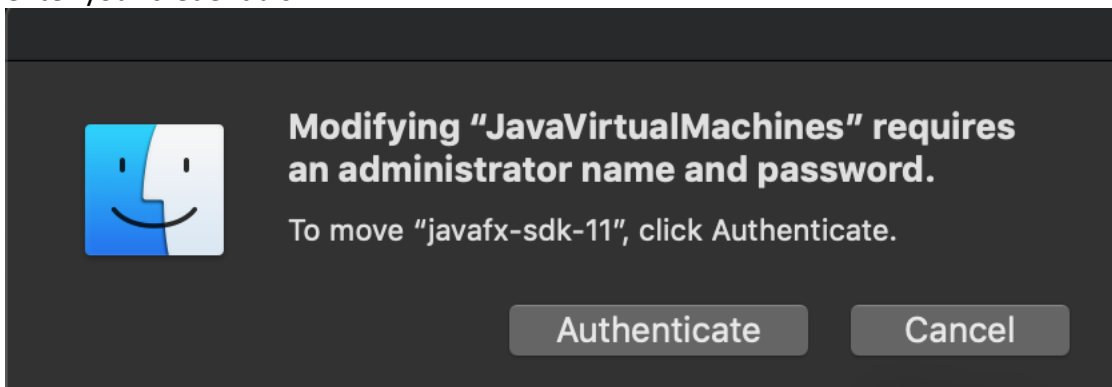
```

Install JavaFX SDK

- 1) Go to the following URL:
<http://gluonhq.com/download/javafx-11-sdk-mac>
- 2) The JavaFX SDK file should start downloading automatically and be sent to your downloads directory. The file is extracted automatically to a folder called **javafx-sdk-11**.
- 3) As we did in step 10 of the previous section, bring up your *Downloads* Finder window and your *JavaVirtualMachines* Finder window side-by-side and drag the extracted **javafx-sdk-11** folder from Downloads to JavaVirtualMachines.

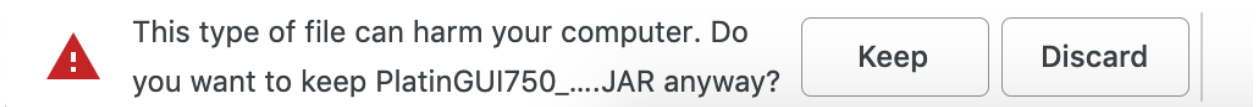


- 4) You will be prompted for Administrator user credentials. Please press Authenticate and enter your credentials.

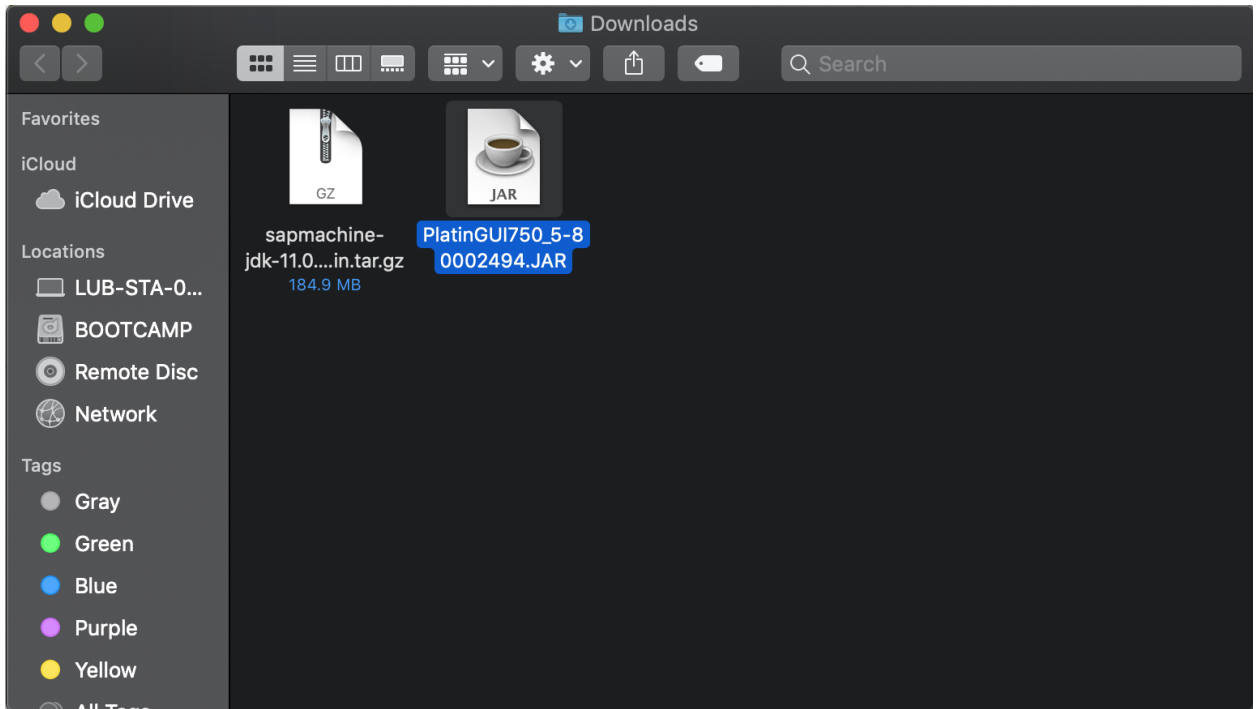


Install SAP GUI for Mac

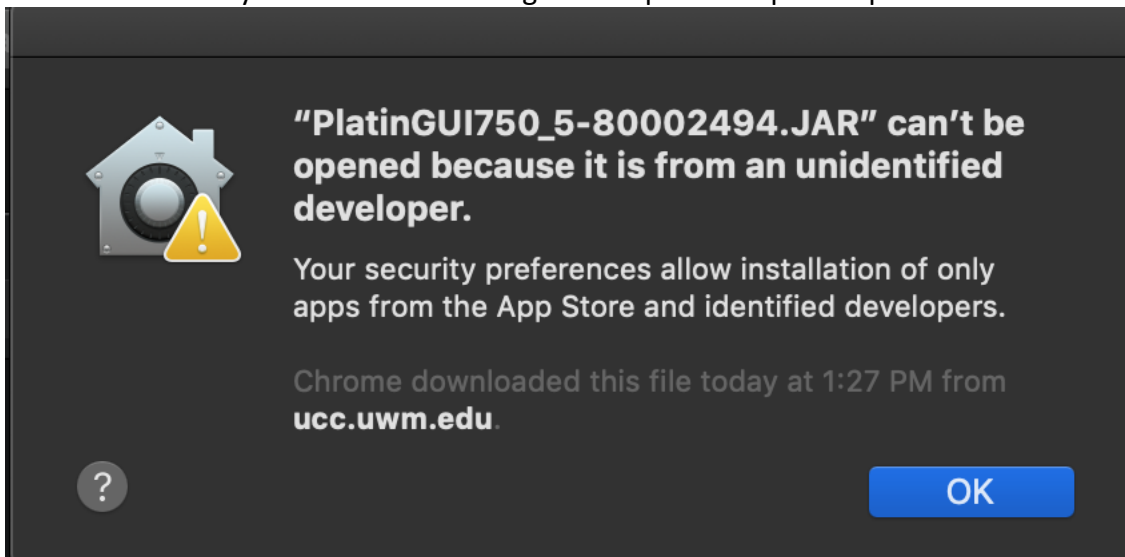
- 1) Download the SAP GUI installation file **PlatinGUI750_#-MacOSX.jar** from the location provided by your instructor.
- 2) You may run into the following warning message. In this case, press *Keep*.



- 3) Open the location where the file was downloaded and double-click on the **PlatinGUI750_#-MacOSX.jar** file.

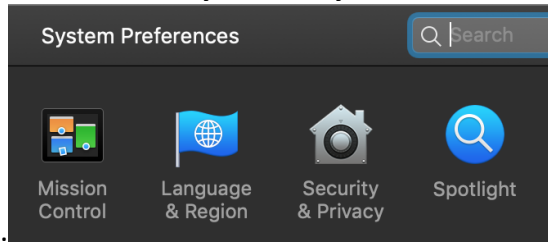
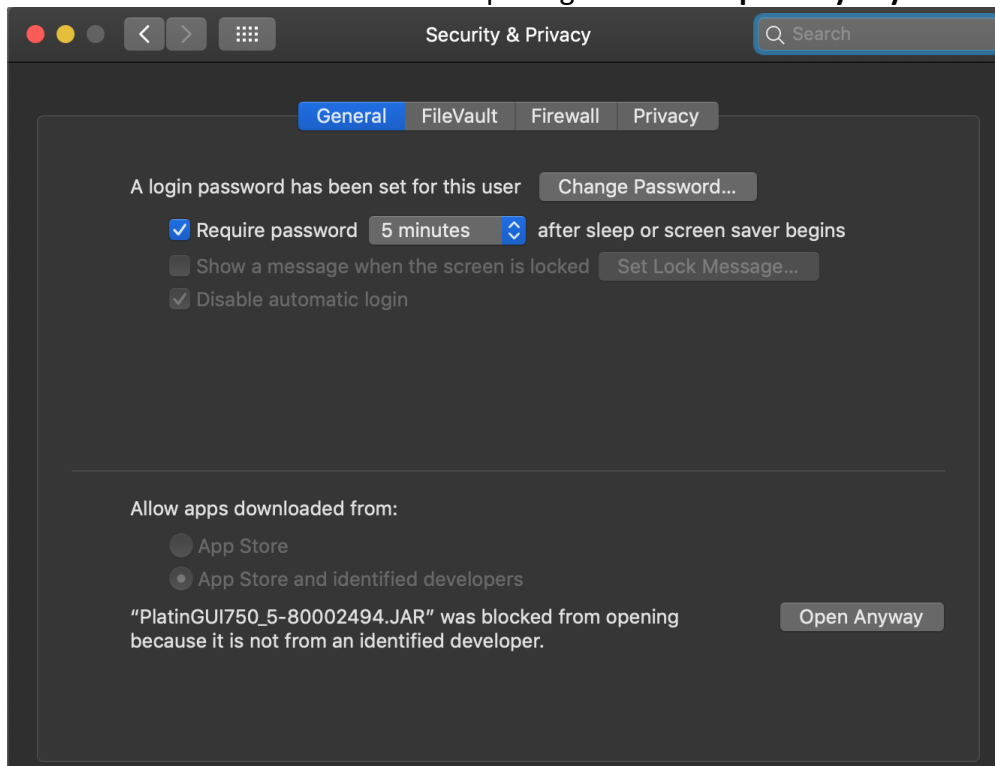
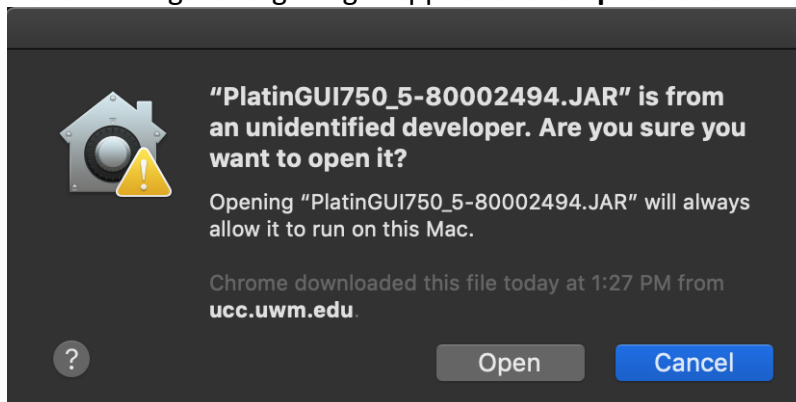


4) You will most likely see this error message. If not please skip to step 9.

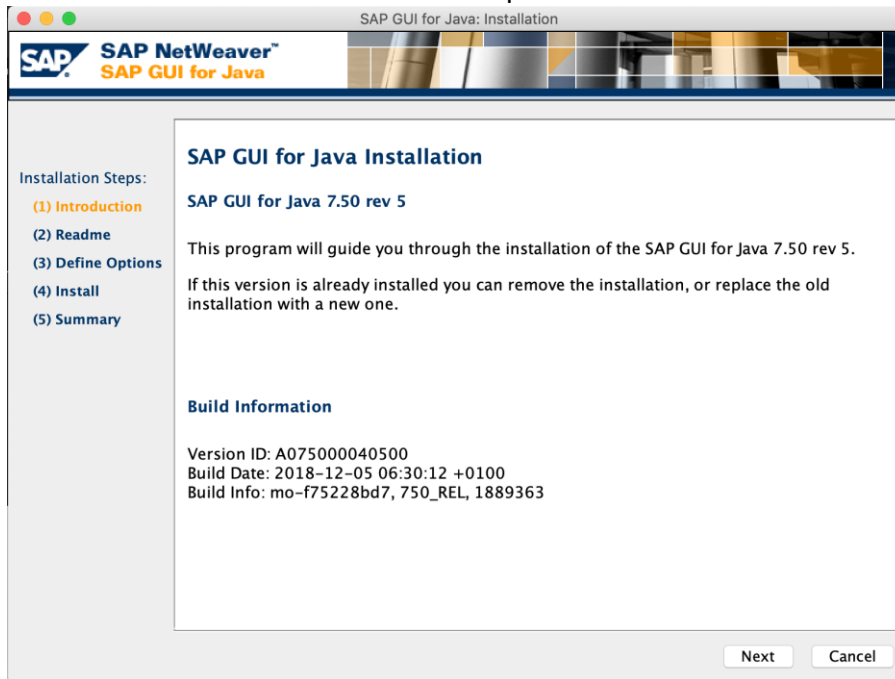


5) Open the Mac **System Preferences** (see icon below).

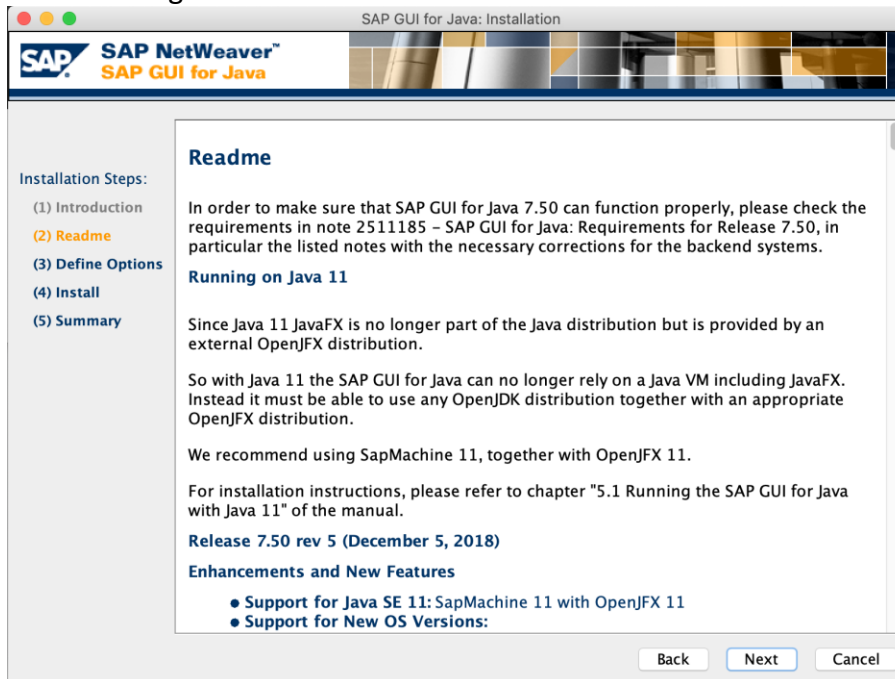


6) Click on **Security & Privacy**7) At the bottom of the Security and Privacy window, you will see the message that the SAP GUI installer was blocked from opening. Press the **Open Anyway** button.8) The following message might appear. Press **Open**.

9) The SAP GUI for Java installer should open. Press **Next**.



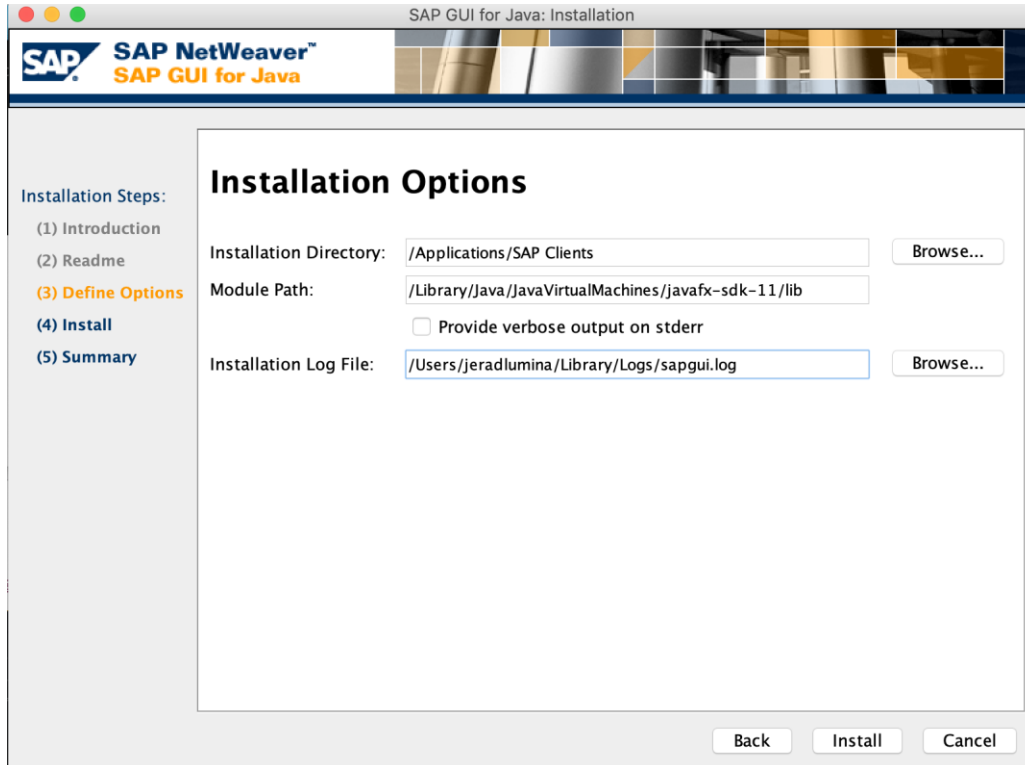
10) Press **Next** again.



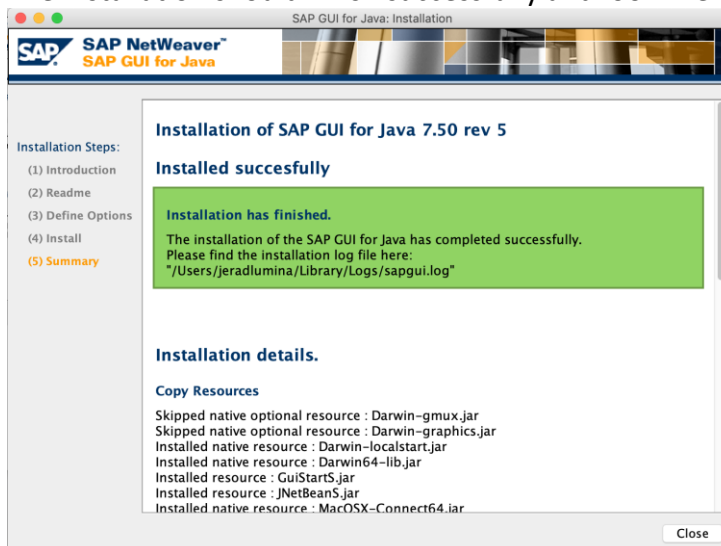
11) On this screen, please enter the **Module Path** as shown below:

/Library/Java/JavaVirtualMachines/javafx-sdk-11/lib

Then press **Install**.

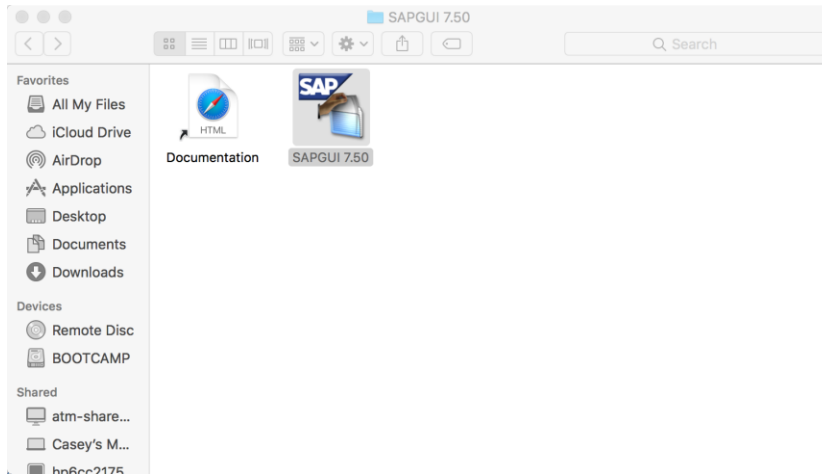


12) The installation should finish successfully and look like the screenshot below.

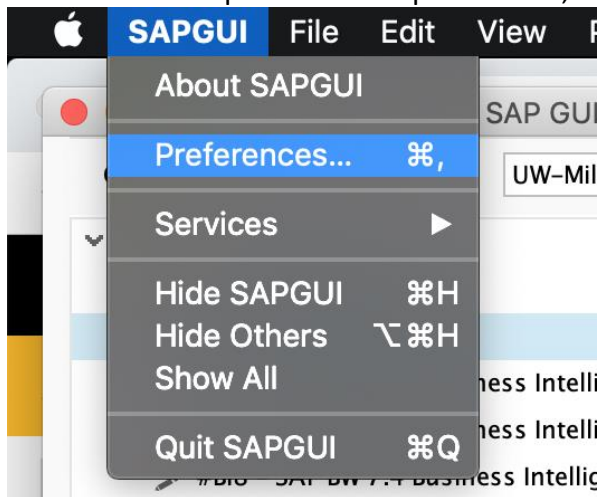


Open and Configure SAPGUI for Mac

- 1) Open Finder and navigate to *Applications > SAP Clients > SAPGUI 7.50*. Open *SAPGUI 7.50*.

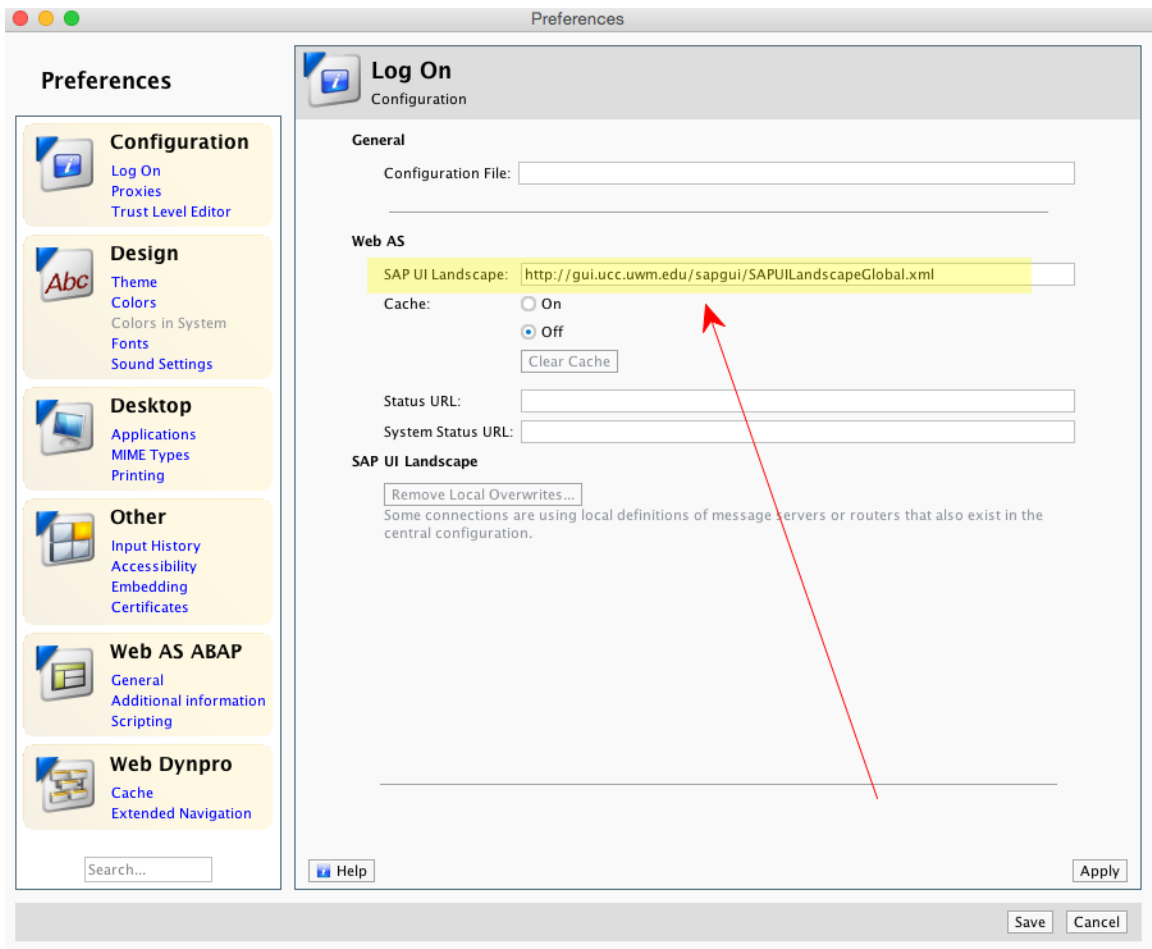


- 2) SAPGUI should open. On the top menu bar, select *SAPGUI > Preferences*.

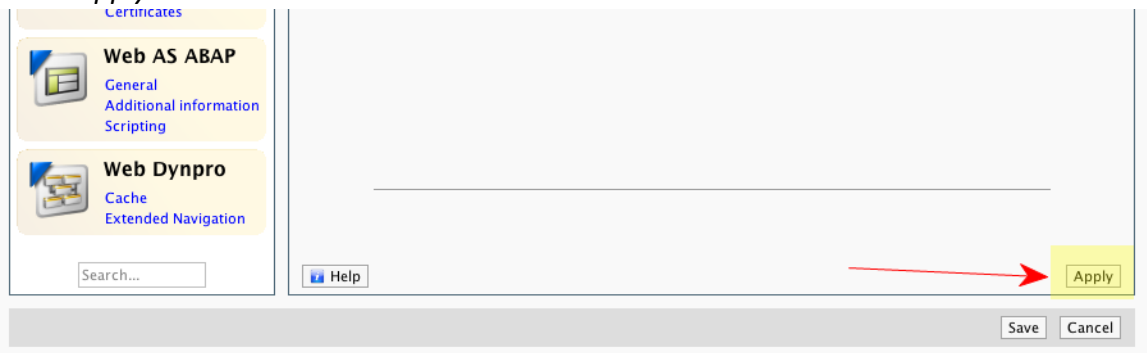


- 3) On the section titled *Log On*, you will need to type in or paste the following link in the *SAP UI Landscape* box under *Web AS*.

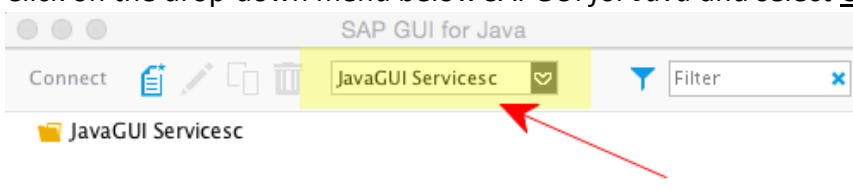
<http://gui.ucc.uwm.edu/sapgui/SAPUILandscapeGlobal.xml>



4) Press *Apply* and close the Preferences window.



5) Click on the drop-down menu below *SAPGUI for Java* and select UW-Milwaukee UCC.



- 6) The SAP server list should now be populated. Double-click on the system specified by your instructor to connect.

