



## **iVMS-4200 Client Software**

### **Adding a video recorder**

**Hikvision USA**



## Notices

---

The information in this documentation is subject to change without notice and does not represent any commitment on behalf of HIKVISION. HIKVISION disclaims any liability whatsoever for incorrect data that may appear in this documentation. The product(s) described in this documentation are furnished subject to a license and may only be used in accordance with the terms and conditions of such license.

Copyright © 2006-2011 by HIKVISION. All rights reserved.

**This documentation is issued in strict confidence and is to be used only for the purposes for which it is supplied.** It may not be reproduced in whole or in part, in any form, or by any means or be used for any other purpose without prior written consent of HIKVISION and then only on the condition that this notice is included in any such reproduction. No information as to the contents or subject matter of this documentation, or any part thereof, or arising directly or indirectly therefrom, shall be given orally or in writing or shall be communicated in any manner whatsoever to any third party being an individual, firm, or company or any employee thereof without the prior written consent of HIKVISION. Use of this product is subject to acceptance of the HIKVISION agreement required to use this product. HIKVISION reserves the right to make changes to its products as circumstances may warrant, without notice.

**This documentation is provided “as-is,” without warranty of any kind.**

Please send any comments regarding the documentation to:  
[techsupport@hikvisionusa.com](mailto:techsupport@hikvisionusa.com)


Find out more about HIKVISION at [www.hikvision.com](http://www.hikvision.com)

## Table of Contents

<b>Notices</b> .....	1
<b>Table of Contents</b> .....	2
<b>Chapter 1. Start iVMS-4200</b> .....	2
1.1 Install the Software .....	2
1.2 User Registration .....	9
1.3 Import Camera Wizard .....	9
<b>Chapter 2. Live View &amp; Control</b> .....	12
2.1 Main Preview Components .....	13
2.2 Start Live View .....	15
<b>Chapter 3. Recording</b> .....	16
3.1 Remote Recording .....	16

## Chapter 1. Start iVMS-4200

### 1.1 Install the Software

**Step1:** Double click the program file  iVMS-4200(v1.0) to enter the following InstallShield Wizard as shown below:

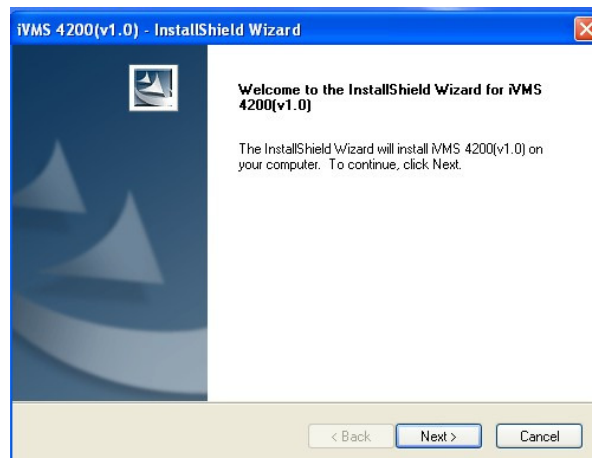


Figure 1.1 Welcome to InstallShield Wizard

**Step2:** Click "Next" to start the InstallShield Wizard. Select the language (English) for installation, and then click "Next" to continue.

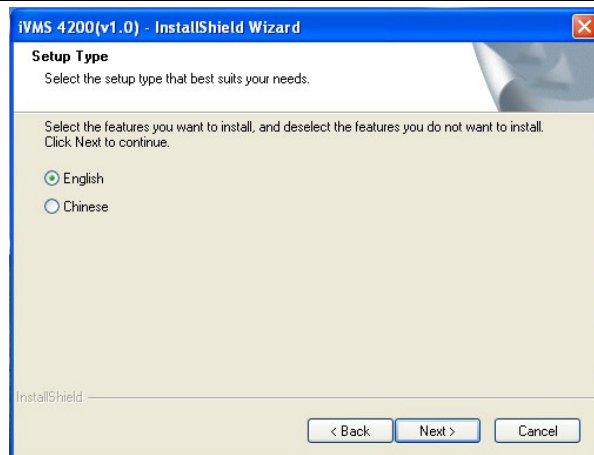


Figure 1.2 Select Language

### Step3: Install vcredist\_x86 patch/WinpCap

Select the driver you want to install.

vcredist\_x86 patch:for X86 operating system

WinpCap: for open source software, SADP driver

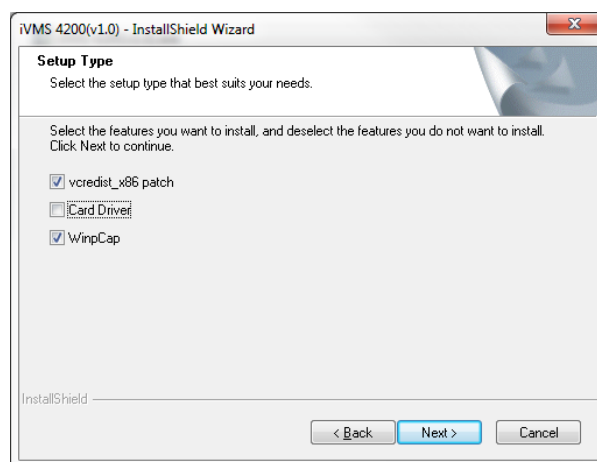


Figure 1.3 Select Driver

### Install vcredist\_x86 patch

Start to install the vcredist\_x86 patch and then click "Next" to continue.

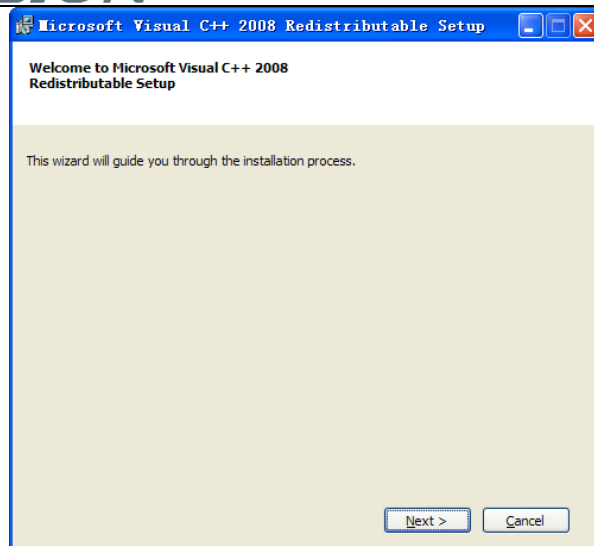


Figure 1.4 Install vcredist\_x86 patch-Start Installation

In the License Terms dialog box, click "I have read and accept the license terms", and then click "Install" to install the vcredist\_x86 patch.

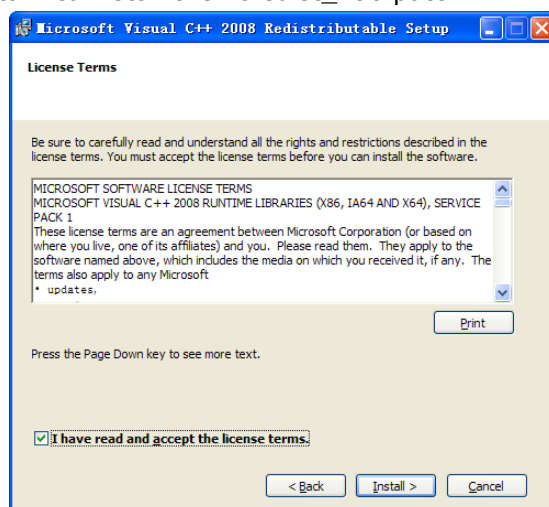


Figure 1.5 Install vcredist\_x86 patch-Accept License Terms

After the Setup Complete interface appears, click **Finish** to complete the installation of vcredist\_x86 patch.

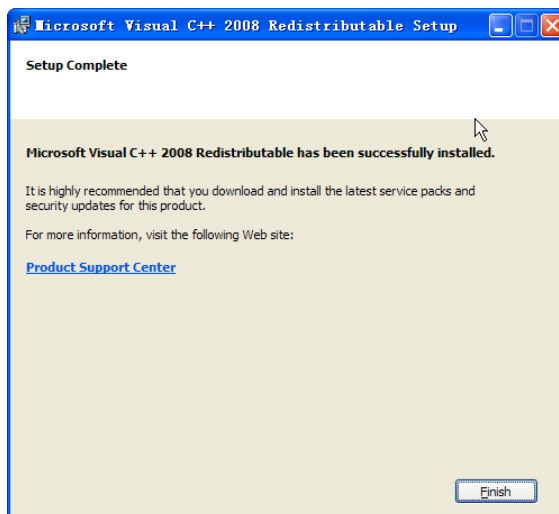


Figure 1.6 Install vcredist\_x86 patch-Complete Installation

### Install WinPcap

Follow the installation prompt to complete the installation of WinPcap. If it has been installed on your computer, you can cancel this step.

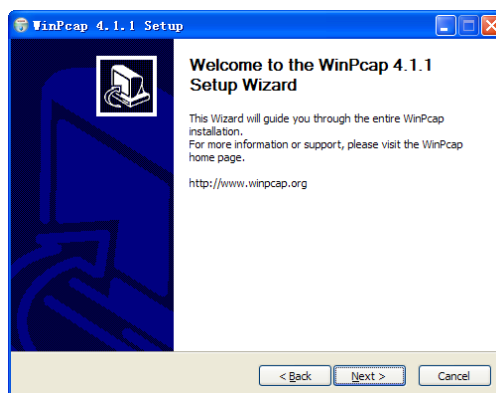
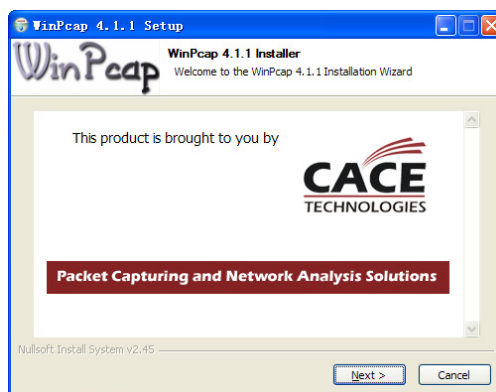


Figure 1.7 Install WinPcap

**Note:** The SADP is used for automatically searching the online device in the local

network. If the WinPcap is not installed, the SADP software cannot be used.

After the driver has been installed, continue the following steps.

**Step5:** Select Client and PC NVR Server to install on your computer. User can also click **Browse** to change the directory to save the program files. Click "Next" to continue.

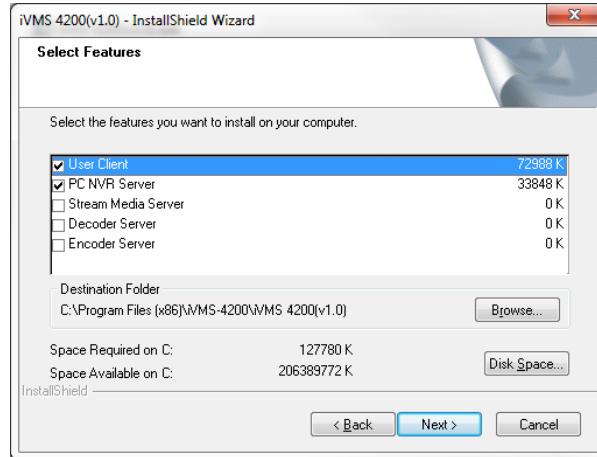


Figure 1.8 Select Installation Programs

**Step6:** In the License Terms interface, click "I accept the terms of the license agreement", and then click "Next" to continue the installation.

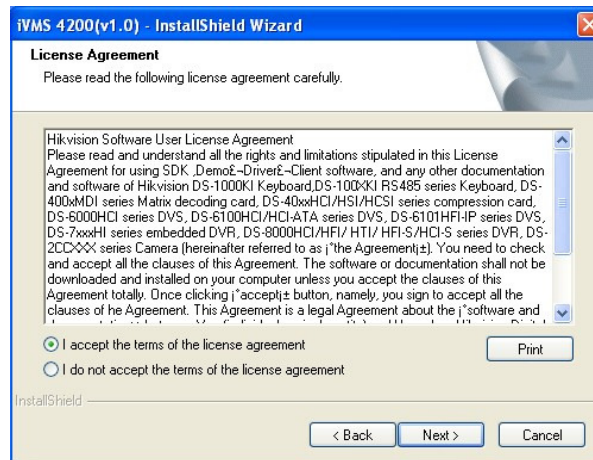


Figure 1.9 Select Installation Programs

**Step7:** Click "Install" to start installation of the selected programs.

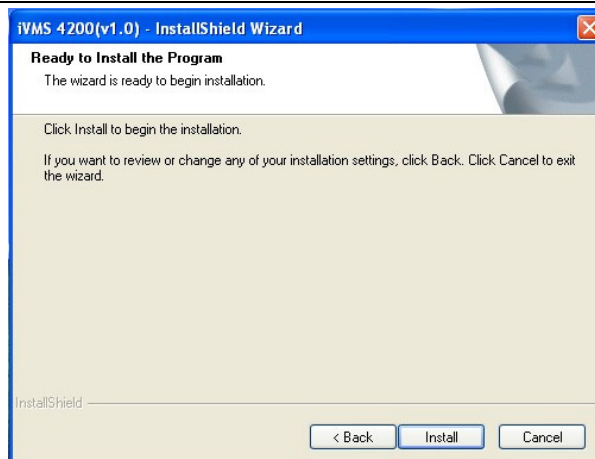


Figure 1.10 Install the Selected Programs

**Step8:** After the installing progress is completed, enter the Setup Type interface to select the desktop shortcut icons for the installed programs. Click "Next" to continue the installation.

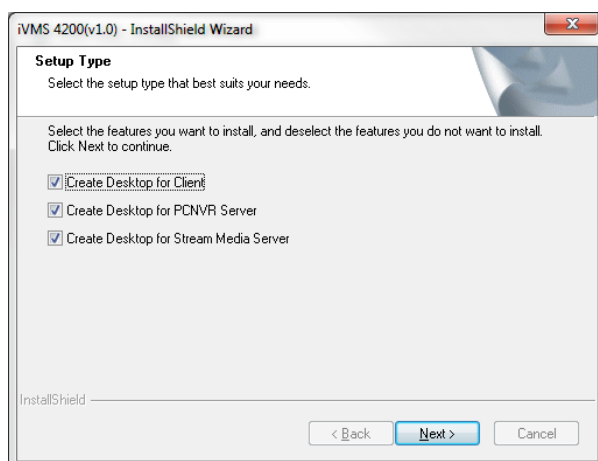


Figure 1.11 Create Desktop Shortcut Icons

**Step9:** Click "Finish" to complete the installation.

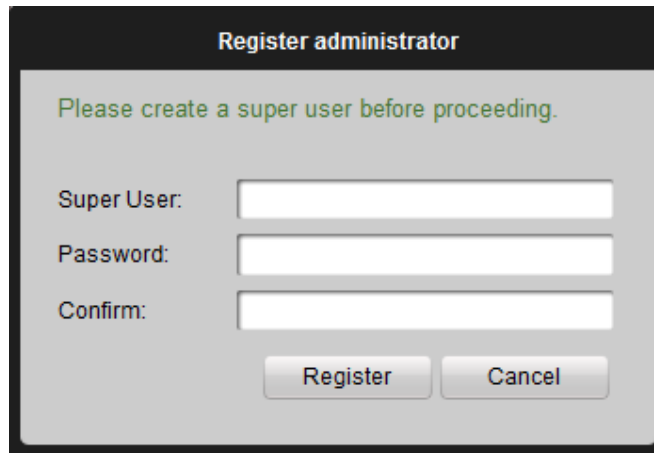




Figure 1.12 Finish the Completion

## 1.2 User Registration

For the first time to use the iVMS-4200 software, you need to register a super user for login.



The image shows a dialog box titled "Register administrator". It contains a green instruction: "Please create a super user before proceeding." Below this are three input fields labeled "Super User:", "Password:", and "Confirm:". At the bottom, there are two buttons: "Register" and "Cancel".

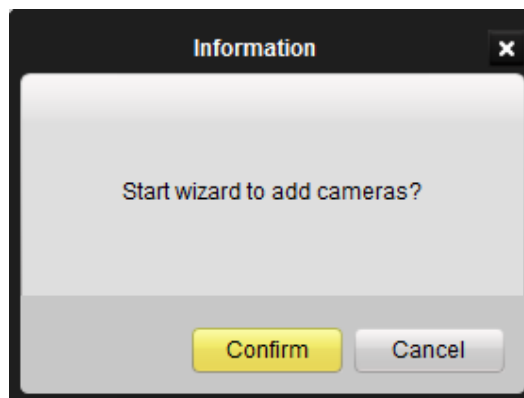
Figure 1.13 User Login

Input the super user name, password and confirm the password in the dialog box and click **Register**. Then, you can log in as the super user.

**Note:** Enter, Space, and TAB buttons are invalid for the user name and password. The password cannot be empty, and it should not be less than six characters and can't be copied and pasted.

## 1.3 Import Camera Wizard

After registration and login, the following message box will pop up:



The image shows an "Information" dialog box with a close button (X) in the top right corner. The main text inside the dialog box asks "Start wizard to add cameras?". At the bottom, there are two buttons: "Confirm" (highlighted in yellow) and "Cancel".

Figure 1.14 Import Camera Wizard

Click **OK** to start the wizard and add the device, or click **Cancel** to exit the wizard.

**Step1:** According to the hint, click **Import Camera** icon to enter the Camera Import control interface.

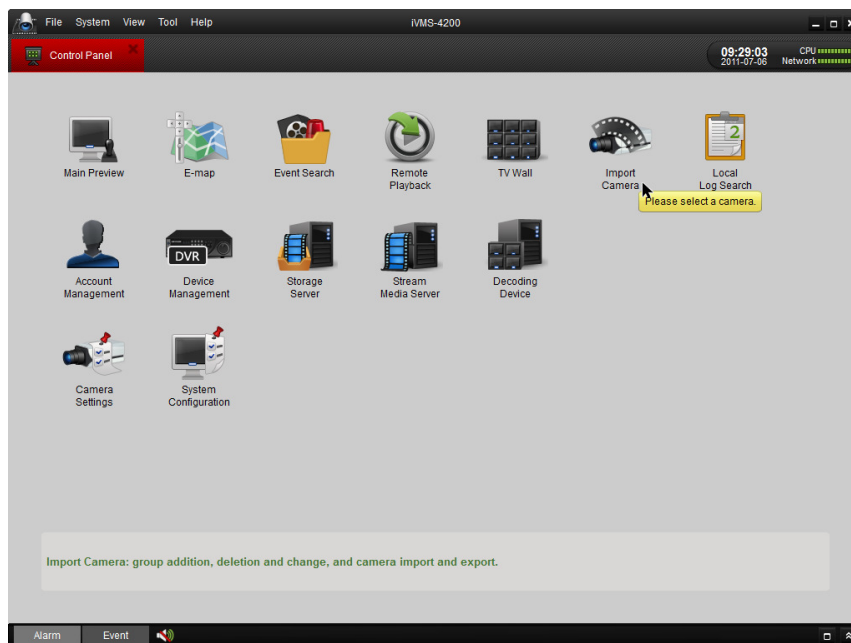


Figure 1.15 Enter Camera Import Interface

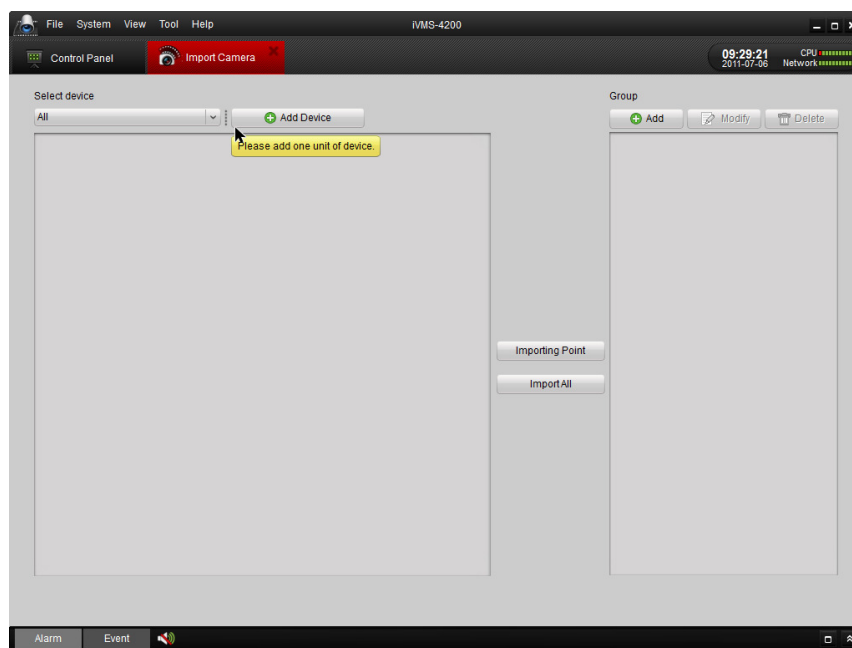


Figure 1.16 Device Management Interface

**Step 2: Add IPC**

Click **Add Device** and then input the device information. Select Export to Group box

and then click **Add** in the Add Device dialog box.

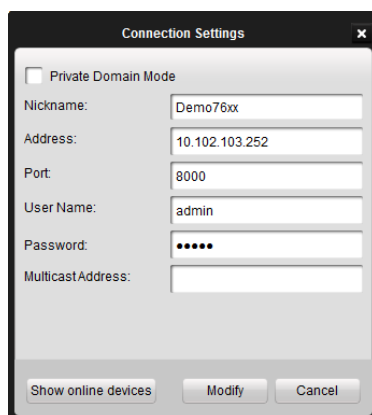



Figure 1.17 Add DVR


**Step 3:** After adding the device according to the above steps, you will see the toolbar after the device name.




click  to enter the Device Parameters configuration interface (Figure 3.19).

Click  to edit the connected device settings.

Click  to delete the added group.

Click  to refresh the page.

Click  to import all the monitoring point to the group named by the name of the device.

### **Step 5: Import Channel to Group**

In the left area on the Camera Import interface, click to select the channels and then click **Import** button to import the selected channels to the Group on the right. Refer to figure below.

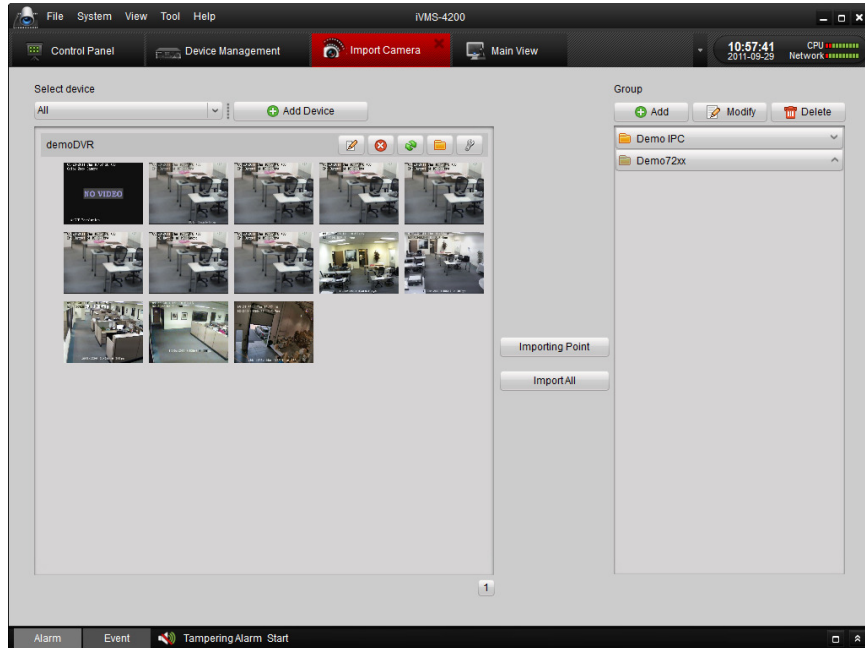


Figure 1.18 Camera Import –Completed

**Note:**

1. You can hold the Ctrl key on PC to select multiple channels or click **Import All** button to select all channels for import.
2. The devices to be added must be online currently.
3. Each channel can be added to one group only once, while the same channel can be added to different groups.
4. Up to 50 channels can be added to each group, with a maximum of 256 channels for all the groups totally.

**Step 6:** After importing the selected channels to the group, you can return to the control panel and then enter the main preview interface to get a live view of the added channels.

## Chapter 2. Live View & Control

**Note:**

A camera group is required to be defined before live view. For the grouping operation, please kindly refer to chapter 4.3 Add a Group.

## 2.1 Main Preview Components

Please click the icon “Main Preview” of the control panel, or click View -> Main Preview on the toolbar to start live view.

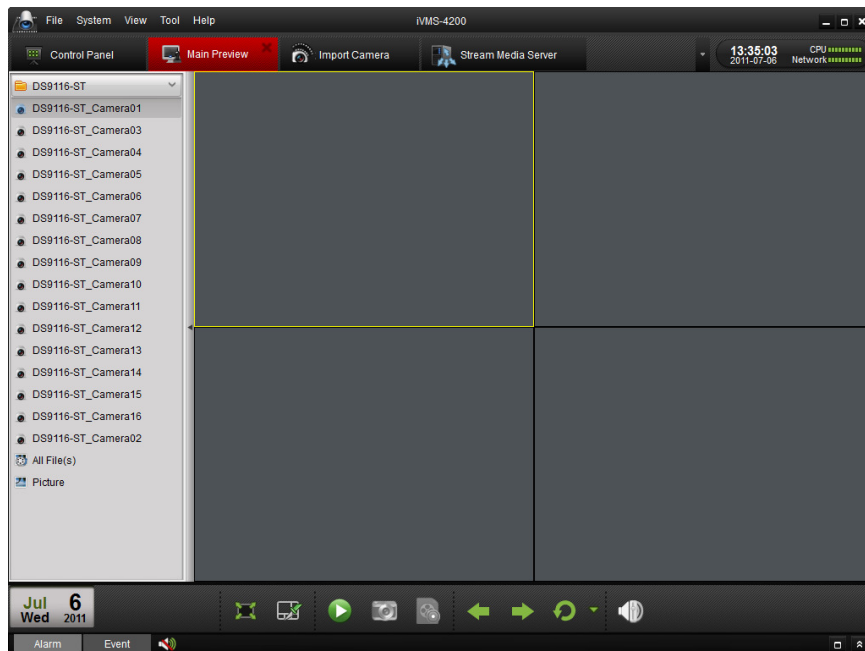


Figure 2.1 Main Preview Interface

Icons in the camera list:







Icon	Description
	Camera is connected and works properly.
	Camera is not connected
	Camera is in preview
	Camera is recording

Main Preview Toolbar:



Button	Name	Description
	Layout	Select different layout mode
	Full Screen	Display video in full screen mode, click again to restore



	Close All	Stop the display of all cameras
	Manual Record	Start manual record for the corresponding cameras, click again to stop
	Previous and Next	Click to view previous and next camera
	Auto Switch	Start auto switching the screen by cameras or by groups
	Volume	Adjust the volume for live audio
	Live Audio	Enable/disable live audio

## 2.2 Start Live View

To view the live video, drag the camera from the list to the display window, or double click the camera name on the list to view the live video (Figure 5.2).

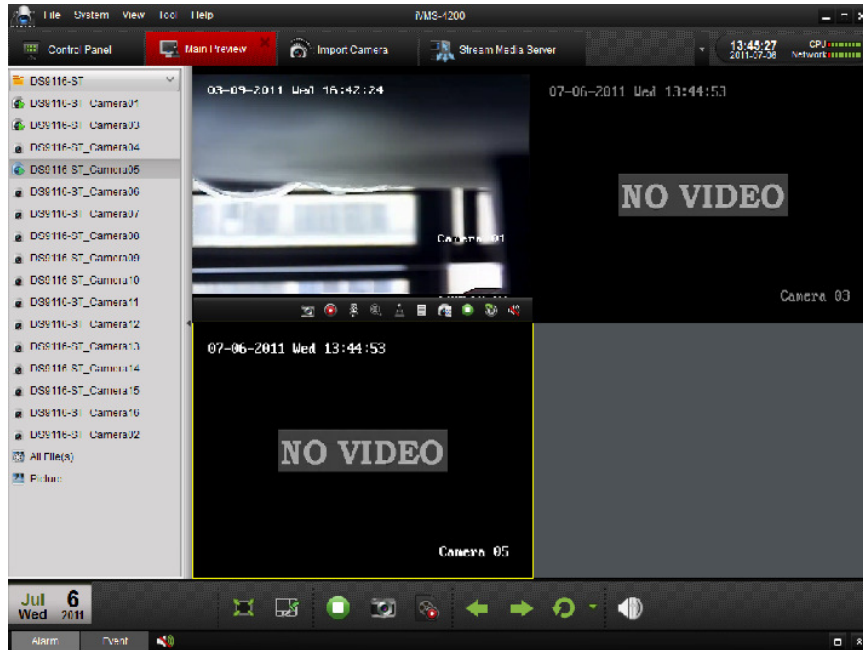


Figure 2.2 Start Live View

Toolbar in each display window:

Button	Description
	Capture
	Start manual record, click again to stop
	Start voice talk, click again to stop
	PTZ control, 8 direction icons will be displayed on the video.
	Check the camera status
	Go to the camera setting interface
	Stop live view
	Remote playback about 7 minutes record of current camera
	Audio button, click to open and close

## Chapter 3. Recording

iVMS-4200 software provides local and remote recording modes. Here we will demonstrate the typical remote scheduling recording. For other recording methods, please refer to the manual.

### 3.1 Remote Recording

When the video storage devices are HDDs, NetHDDs or SD/SDHC cards installed in the DVR or IP cameras, you may adopt remote recording mode as well.

1. Format the HDD or SD/SDHC card: After adding the devices into iVMS-4200, enter the Device Management interface and then HDD sub-menu to format the storage devices first, shown in the figure below.

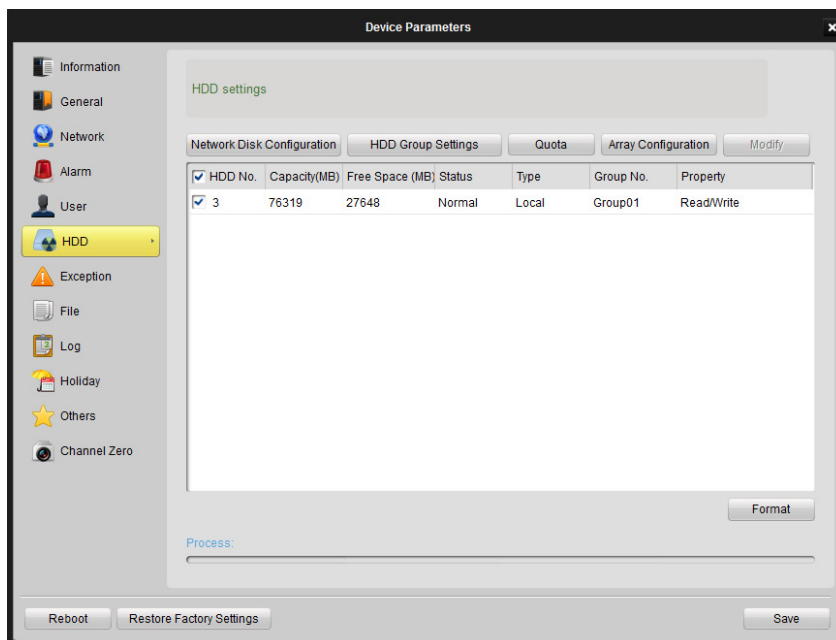


Figure 3.1 Format the HDD

2. Enable Local Recording: Go to **Camera Configuration** Panel and tick Local Recording of the Schedule tab.

Note: Here the Local Recording refers to the recording on the DVR or IP Camera.





Figure 3.2 Enable Local Recording

1. Recording Schedule Setup: After enabling the Use DVR option, please click Edit Schedule Template and select a recording schedule from the templates shown as below, please refer to previous chapter for schedule setting procedure.

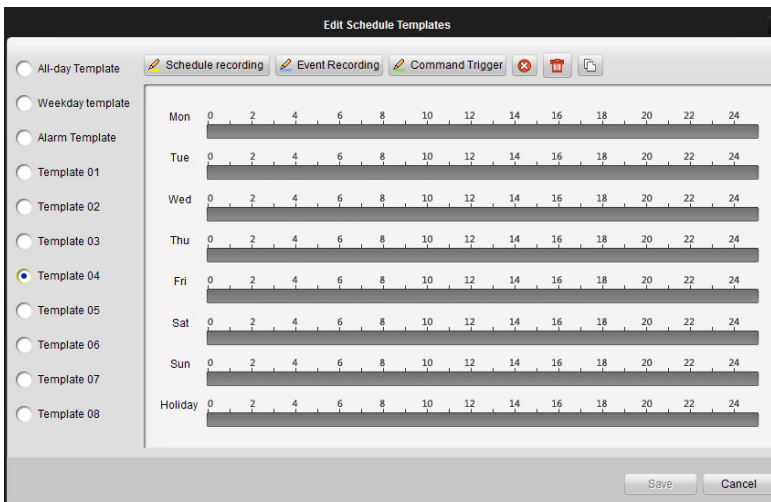



Figure 3.3 Recording Templates

## Chapter7. Playback

Based on the different recording modes, the playback function consists of three playback modes: Local playback and Event Playback. For demonstration purpose, we will demonstrate the most typical playback based on the remote scheduled recording.

### 7.1 Instant Playback

1. Go to Main Preview panel, double-click a channel to enable the tool bar shown as below, and click  button to start instant playback.

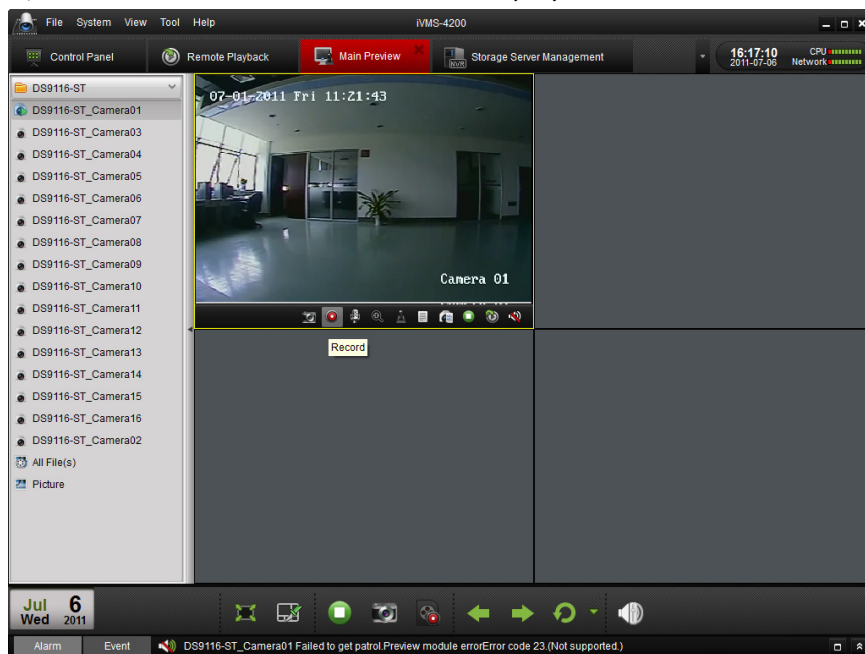









Figure 7.1 Switch Live Preview/Playback Mode

2. In instant playback interface, please click  button to start playback the first video files of current day; click  and  buttons to fast or slow play the video. Click  to pause.
3. The table below is a list of other buttons in this interface for video management.

Button	Description
	Picture capture
	Start/Stop video cutting
	Download the video file with flow control






	Switch preview/playback mode
	Open/close audio
	Add default tag
	Add customized tag
	Tag download

Figure 7.2 Playback Player



4. You may also use the time bar at the bottom of the Main View panel to adjust the playback progress. Also  and  buttons are used to expand and narrow down the time bar so user can choose a more accurate playback time.



Figure 7.3 Time Bar

1. Make sure to import all the channels that you wish to play back in **Import Camera** panel.
2. It is also required to enable continuous recording on all the alarm/motion-triggered channels before event playback.