

FRANKLIN & MARSHALL

March 2018
Franklin & Marshall
College Poll

SUMMARY OF FINDINGS

Prepared by:

Center for Opinion Research
Floyd Institute for Public Policy
Franklin & Marshall College

Table of Contents

TABLE OF CONTENTS	2
KEY FINDINGS	3
<i>VOTER INTEREST</i>	<i>4</i>
<i>PRESIDENT TRUMP: JOB PERFORMANCE</i>	<i>4</i>
<i>SENATOR CASEY: JOB PERFORMANCE</i>	<i>6</i>
<i>GOVERNOR WOLF: JOB PERFORMANCE</i>	<i>6</i>
<i>STATE ISSUES</i>	<i>9</i>
METHODOLOGY	11
ATTACHMENT A-1	12
ATTACHMENT A-2	13
ATTACHMENT A-3	14
MARGINAL FREQUENCY REPORT	15

Key Findings

The March 2018 Franklin & Marshall College Poll finds that nearly half (48%) of the state’s registered voters are “very interested” in the 2018 mid-term elections; more Democrats (60%) than Republicans (41%) or independents (26%) say they are “very interested.” The current survey shows that more registered voters expect to vote for the Democratic party candidate for the US House in November (42%) than expect to vote for the Republican candidate (35%), but the Democratic candidates’ advantage is much larger, 53% to 30%, among those “very interested” in the election. At the moment, both Governor Tom Wolf and Senator Bob Casey hold comfortable leads against their Republican challengers, but a large portion of voters are undecided in those races.

More than two in five (43%) registered voters in Pennsylvania believe Governor Wolf is doing an “excellent” or “good” job as governor, which is an increase from the September survey (38%). Two in five (37%) registered voters believe Senator Casey is doing an “excellent” or “good” job as the state’s US Senator, which is consistent with his ratings in the September survey. About one in three (30%) registered voters in Pennsylvania believes President Trump is doing an “excellent” or “good” job as president, which is consistent with his ratings in the September survey. Nearly half (46%) of the state’s registered voters believe the state is “headed in the right direction,” which is the first time since 2009 that more voters chose that option than said the state was “on the wrong track.” Three in five (60%) registered voters believe the state’s congressional districts created after the 2010 census were unfairly drawn. Most registered voters in Pennsylvania strongly favor enhancing the gun background check system (86%), banning assault style weapons (61%), and raising the minimum age to purchase a gun to 21 (59%).

Voter Interest

Nearly half (48%) of the state's registered voters say they are "very interested" in the 2018 elections. Voter interest is related to both political party and political ideology. At the moment, more Democrats (60%) than Republicans (41%) or independents (26%) say they are "very interested." More self-described liberals (60%) than conservatives (47%) or moderates (40%) say they are "very interested."

The outcomes of the 2018 mid-terms will be driven by differences in voter interest if that translates into different turnout rates among partisans. The current survey shows that more registered voters expect to vote for the Democratic party candidate for the US House in November (42%) than expect to vote for the Republican candidate (35%), but the Democratic candidates' advantage is much larger, 53% to 30%, among those "very interested" in the election.

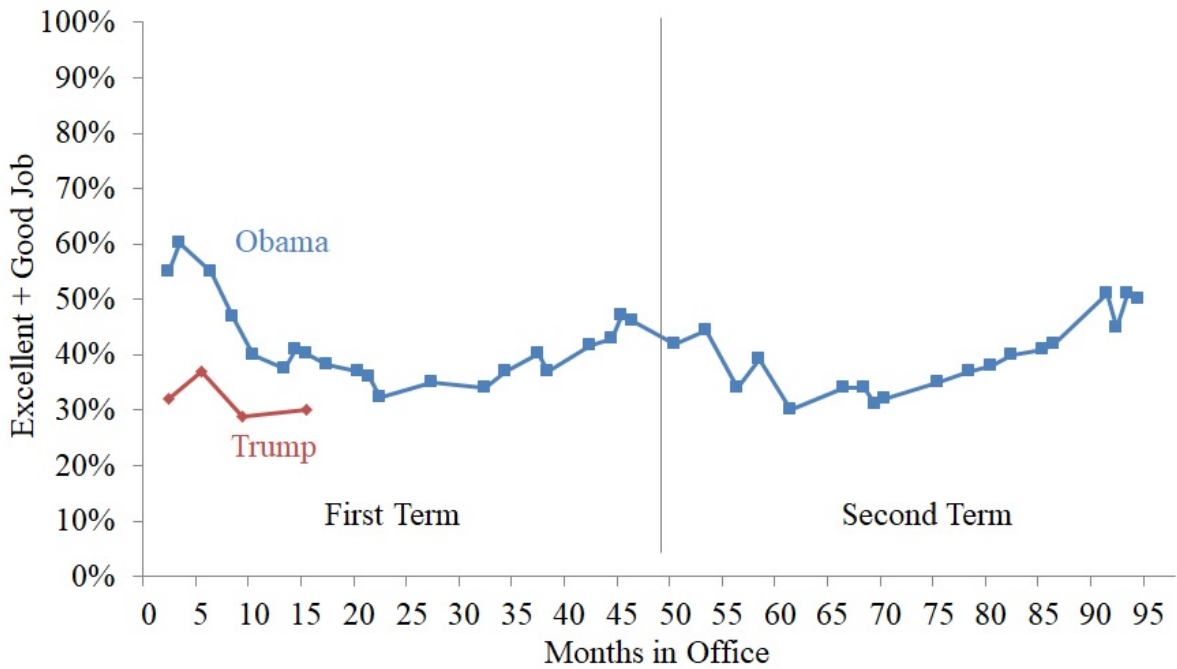
President Trump: Job Performance

About one in three (30%) registered voters in Pennsylvania believes President Trump is doing an "excellent" or "good" job as president, which is consistent with his ratings in the September survey. Figure 1 compares President Trump's job ratings to President Obama's job ratings; President Trump's current rating is below President Obama's rating in Pennsylvania at a similar point in his Presidency. A majority of Republicans (62%) rate the President's performance positively, while fewer Democrats (5%) or Independents (25%) do so. Conservatives (70%) are more likely than moderates (16%) or liberals (1%) to give the President positive job approval ratings.

Figure 1:

Comparison of Presidents' Job Performance Ratings, Pennsylvania voters March 2018

How would you rate the way that [fill President] is handling his job as President? Would you say he is doing... an excellent job, a good job, only a fair job, or a poor job as President?



Source: Survey conducted March 19 – 26, 2018



Senator Casey: Job Performance

Two in five (37%) registered voters in Pennsylvania believe Senator Casey is doing an “excellent” or “good” job as the state’s US Senator, which is consistent to his ratings in the September survey. Half (55%) of registered Democrats, one in three (32%) independents, and one in five (17%) Republicans provide positive ratings of the Senator’s job performance. Interestingly, a sizable group of Independents (31%), Republicans (23%), and Democrats (14%) say they “do not know” how they would rate the Senator’s performance.

Senator Casey (43%) currently holds a comfortable lead over his Republican challenger, Representative Lou Barletta (25%), although nearly one in three (30%) voters remains undecided.

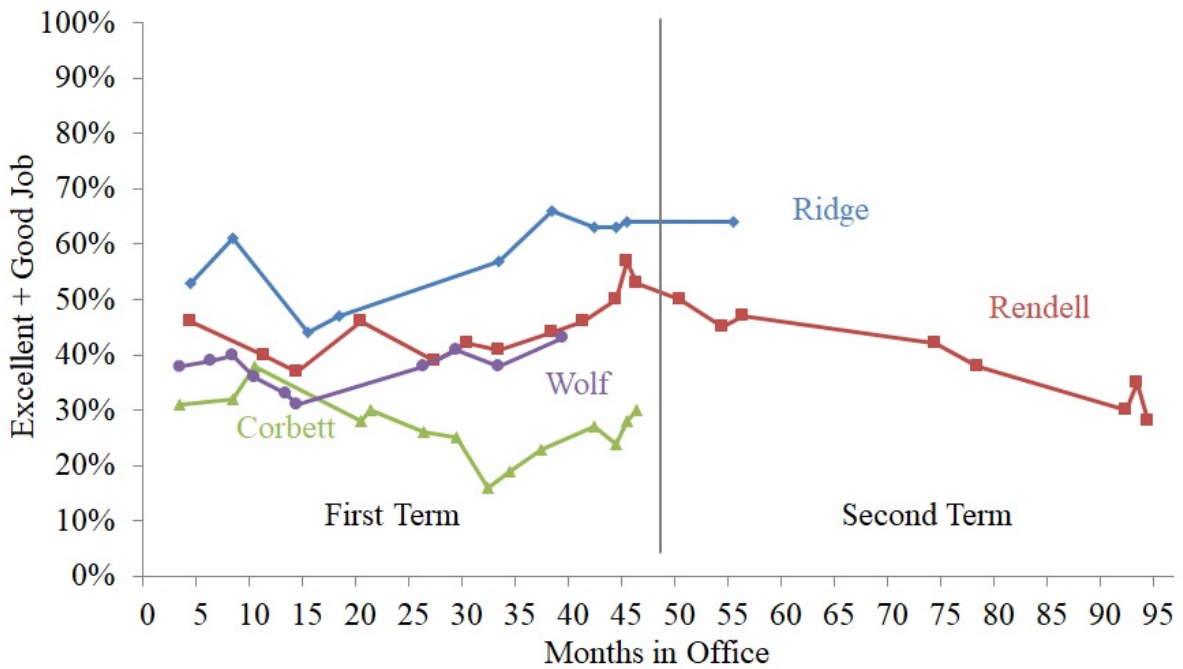
Governor Wolf: Job Performance

More than two in five (43%) registered voters in Pennsylvania believe Governor Wolf is doing an “excellent” or “good” job as governor, which is an increase from the September survey (38%). Two in three (63%) Democrats, nearly half (48%) of independents, and one in five (18%) Republicans provide positive ratings of the Governor’s job performance. Governor Wolf’s improved job performance ratings increased because more Democrats (50% in September) and independents (32% in September) rate his performance favorably. Figure 2 compares Governor Wolf’s job performance ratings to his recent predecessors. Wolf’s job performance rating is similar to Governor Rendell’s and better than Governor Corbett’s at similar points during their terms in office.

Figure 2:

Comparison of Governors' Job Performance Ratings, Pennsylvania voters March 2018

How would you rate the way that [fill Governor] is handling his job as Governor? Would you say he is doing... an excellent job, a good job, only a fair job, or a poor job as Governor?



Source: Survey conducted March 19 – 26, 2018



Governor Wolf currently leads all three of his Republican challengers, as Table 1 shows.¹ The Republican candidates performed similarly when matched against Governor Wolf, with each receiving about one in four votes. Still, there are many undecided voters in the race.

¹ The Republican candidate in the gubernatorial race was randomly selected so that each respondent was asked only about a single candidate, either Ellsworth, Mango, or Wagner. Randomization checks show that the distribution of respondents into each subgroup were statistically equivalent, meaning there were no difference by party, ideology, race, age, income, or geography. The distribution by gender did differ, with the samples for Ellsworth and Wagner having more females than the sample for Mango. There was no significant difference in the relative performance of the Republican candidates.

Table 1:

**Pennsylvania Gubernatorial Race:
Registered Voters, March 2018**

If the 2018 election for governor were being held today and the candidates included (rotated) ([fill candidate], the Republican and Tom Wolf, the Democrat), would you vote for [fill candidate], Tom Wolf some other candidate, or aren't you sure how you would vote?

	n=143
Tom Wolf	51%
Laura Ellsworth	22%
Some other candidate	2%
Do not know	25%

	n=143
Tom Wolf	49%
Paul Mango	22%
Some other candidate	4%
Do not know	25%

	n=137
Tom Wolf	38%
Scott Wagner	21%
Some other candidate	6%
Do not know	35%

Source: Survey conducted March 19 – 26, 2018



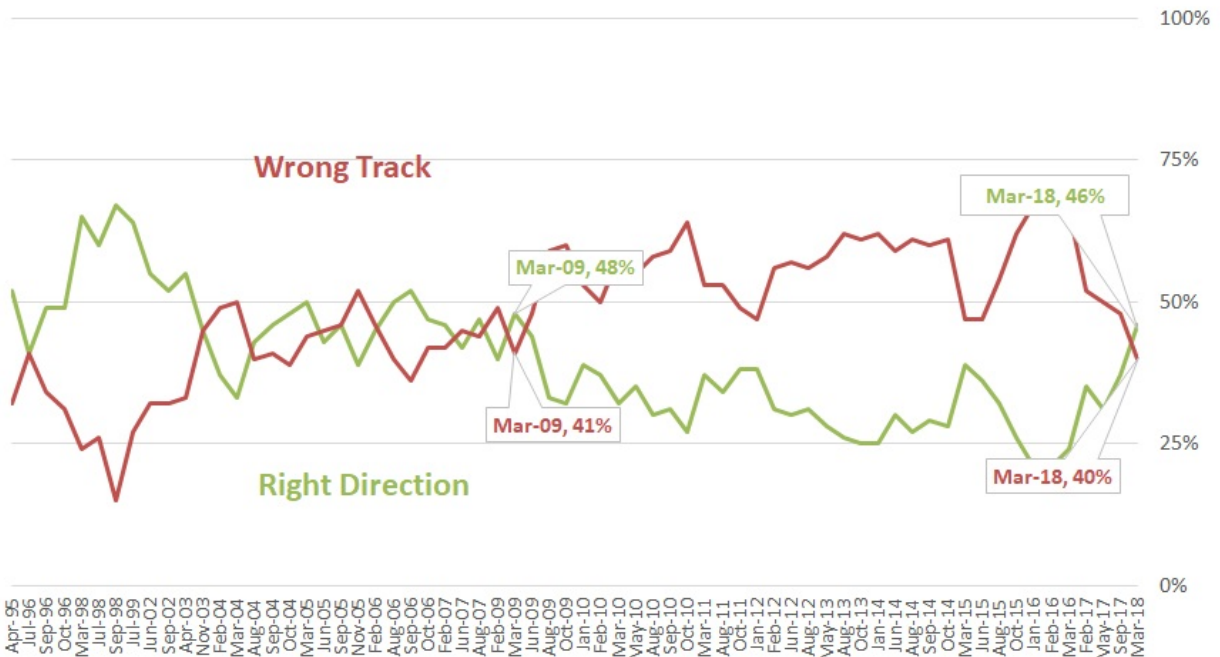
State Issues

Nearly half (46%) of the state’s registered voters believe the state is “headed in the right direction.” As Figure 3 shows, it is the first time since 2009 that more voters chose that option than said the state was “on the wrong track.” More Democrats (52%) than independents (46%) or Republicans (38%) believe the state is “headed in the right direction.” Registered voters mention unemployment and the economy (17%), government and politicians (16%), taxes (15%), crime (10%), education (9%), and an assortment of other issues as being the most important problems facing the state.

Figure 3:

Direction of State Over Time, Pennsylvania residents 1995-2018

All in all, do you think things in Pennsylvania are generally headed in the right direction, or do you feel that things are off on the wrong track?



Note: Beginning in 2012, question asked only of registered voter, prior surveys included all adults.



Three in five (60%) registered voters believe the state's congressional districts created after the 2010 census were unfairly drawn and most (67%) have heard about the State Supreme Court's order that the map be re-drawn. Democrats (69%) are most likely to believe the 2010 map was unfairly drawn, but a majority of Republicans (52%) and independents (51%) also believe the map was drawn unfairly.

Most registered voters in Pennsylvania strongly favor enhancing the gun background check system (86%), banning assault style weapons (61%), and raising the minimum age to purchase a gun to 21 (59%). There are sizable differences in support for these proposals by party and political ideology. Gun owners are less likely to support these proposals as well, although a majority of gun owners do favor all of the proposals: banning assault weapons (52%), enhanced background checks (86%), and raising the minimum age to purchase a weapon to 21 (58%).

Methodology

The survey findings presented in this release are based on the results of interviews conducted March 19 – 26, 2018. The interviews were conducted at the Center for Opinion Research at Franklin & Marshall College on behalf of the Center for Politics and Public Affairs. The poll was designed and administered by the staff of the Center for Opinion Research. The data included in this release represent the responses of 423 Pennsylvania registered voters, including 201 Democrats, 163 Republicans, and 58 Independents. The sample of registered voters was obtained from L2, formerly Labels & Lists. All sampled respondents were notified by letter about the survey. Interviews were completed over the phone and online depending on each respondent's preference. Survey results were weighted (age, gender, education, ideology, and party registration) using an iterative weighting algorithm to reflect the known distribution of those characteristics as reported by the Pennsylvania Department of State and Pennsylvania exit polls.

The sample error for this survey is +/- 6.8 percentage points when the design effects from weighting are considered. In addition to sampling error, this poll is also subject to other sources of non-sampling error. Generally speaking, two sources of error concern researchers most. Non-response bias is created when selected participants either choose not to participate in the survey or are unavailable for interviewing. Response errors are the product of the question and answer process. Surveys that rely on self-reported behaviors and attitudes are susceptible to biases related to the way respondents process and respond to survey questions.

Attachment A-1

Presidential Job Performance: Registered Voters, Pennsylvania, March 2018

How would you rate the way that Donald Trump is handling his job as President? Would you say he is going an excellent job, a good job, only a fair job, or a poor job as President?

	Excellent/Good	Fair/Poor	Do not know
Party*			
Republican	62%	36%	2%
Democrat	5%	95%	0%
Independent or something else	25%	75%	0%
Ideology*			
Liberal	1%	99%	0%
Moderate	16%	83%	1%
Conservative	70%	28%	1%
Gender			
Male	28%	72%	0%
Female	32%	67%	1%
Age*			
Under 35	12%	88%	0%
35-54	36%	64%	0%
Over 55	37%	61%	2%
Education*			
HS or less	44%	53%	3%
Some college	35%	64%	0%
College degree	21%	79%	0%
Income**			
Under 35	31%	65%	3%
35-75	30%	70%	0%
Over 75	22%	78%	0%
Race*			
White	33%	66%	1%
Nonwhite	1%	99%	0%
Marital Status*			
Single, Never Married	19%	81%	0%
Married	35%	65%	0%
Not currently married	31%	66%	4%
Religious Affiliation*			
Protestant	39%	59%	2%
Catholic	38%	62%	1%
Other, unaffiliated	19%	81%	0%
Born Again Christian or Fundamentalist*			
Yes	47%	51%	2%
No	26%	74%	0%
Region**			
Philadelphia	5%	95%	0%
Northeast	39%	59%	2%
Allegheny	27%	73%	0%
Southwest	27%	73%	0%
Northwest	19%	79%	3%
Central	38%	61%	0%
Southeast	26%	73%	1%
Employment**			
Fulltime	30%	70%	0%
Other	23%	76%	1%
Retired	37%	62%	1%

* p<0.01 ** p<0.05

Source: Survey conducted March 19 – 26, 2018

Attachment A-2

Gubernatorial Job Performance: Registered Voters, Pennsylvania, March 2018

How would you rate the way that Tom Wolf is handling his job as Governor? Would you say he is going an excellent job, a good job, only a fair job, or a poor job as Governor?

	Excellent/Good	Fair/Poor	Do Not Know
Party*			
Republican	18%	74%	8%
Democrat	63%	31%	6%
Independent or something else	48%	37%	15%
Ideology*			
Liberal	69%	22%	8%
Moderate	49%	45%	6%
Conservative	16%	75%	9%
Gender**			
Male	46%	49%	5%
Female	41%	48%	11%
Age*			
Under 35	51%	39%	10%
35-54	35%	53%	12%
Over 55	46%	52%	3%
Education*			
HS or less	27%	65%	8%
Some college	38%	53%	9%
College degree	54%	39%	7%
Income			
Under 35	44%	46%	10%
35-75	41%	50%	10%
Over 75	50%	46%	5%
Race			
White	43%	50%	8%
Nonwhite	58%	30%	12%
Marital Status**			
Single, Never Married	54%	37%	9%
Married	38%	55%	7%
Not currently married	45%	47%	8%
Religious Affiliation*			
Protestant	40%	53%	7%
Catholic	38%	61%	1%
Other, unaffiliated	51%	36%	13%
Born Again Christian or Fundamentalist*			
Yes	35%	50%	15%
No	47%	47%	6%
Region			
Philadelphia	51%	42%	7%
Northeast	43%	51%	7%
Allegheny	45%	45%	9%
Southwest	55%	31%	14%
Northwest	20%	73%	7%
Central	38%	55%	7%
Southeast	52%	40%	8%
Employment**			
Fulltime	41%	51%	8%
Other	46%	41%	13%
Retired	46%	52%	2%

* p<0.01

** p<0.05

Source: Survey conducted March 19 – 26, 2018

Attachment A-3

US Senator Casey Job Performance: Registered Voters, Pennsylvania, March 2018

How would you rate the way that Bob Casey, Jr. is handling his job as Senator? Would you say he is going an excellent job, a good job, only a fair job, or a poor job as Senator?

	Excellent/Good	Fair/Poor	Do Not Know
Party*			
Republican	17%	59%	23%
Democrat	55%	31%	14%
Independent or something else	32%	37%	31%
Ideology*			
Liberal	51%	31%	18%
Moderate	45%	35%	20%
Conservative	17%	62%	21%
Gender**			
Male	38%	47%	15%
Female	36%	39%	25%
Age**			
Under 35	30%	43%	27%
35-54	35%	41%	24%
Over 55	43%	44%	13%
Education			
HS or less	30%	44%	26%
Some college	32%	49%	19%
College degree	44%	38%	18%
Income**			
Under 35	36%	36%	27%
35-75	28%	51%	21%
Over 75	44%	39%	16%
Race			
White	38%	42%	20%
Nonwhite	33%	42%	25%
Marital Status			
Single, Never Married	33%	43%	24%
Married	38%	44%	19%
Not currently married	42%	40%	18%
Religious Affiliation			
Protestant	39%	40%	21%
Catholic	36%	46%	18%
Other, unaffiliated	38%	41%	21%
Born Again Christian or Fundamentalist			
Yes	32%	39%	29%
No	40%	42%	18%
Region			
Philadelphia	32%	50%	18%
Northeast	45%	35%	19%
Allegheny	37%	45%	18%
Southwest	49%	28%	23%
Northwest	26%	64%	11%
Central	33%	43%	24%
Southeast	42%	42%	16%
Employment*			
Fulltime	33%	45%	21%
Other	33%	39%	28%
Retired	47%	43%	10%

* p<0.01

** p<0.05

Source: Survey conducted March 19 - 26, 2018

Marginal Frequency Report

Responses may not total 100% due to rounding.

REG. Some people are registered to vote, and many others are not. Are you currently registered to vote at your present address?

100% Yes
0% No

RegPARTY. Are you currently registered as a Republican, a Democrat, an Independent, or as something else?

39% Republican
48% Democrat
13% Independent
1% Something else

Vot16. Did you vote in the last presidential election in 2016, or not?

	Yes	No
Mar 2018	92%	8%
Sep 2017	96%	4%
May 2017	97%	3%

ChgVote16 As of today, do you feel comfortable with your choice for President or do you wish you could change how you voted?

March 2018 <i>(Respondents who voted in last presidential election)</i>	Clinton <i>n=187</i>	Trump <i>n=149</i>	Other <i>n=50</i>
Comfortable with your choice	98%	91%	73%
Wish you could change	2%	4%	19%
Do not know	0%	5%	9%

September 2017 <i>(Respondents who voted in last presidential election)</i>	Clinton <i>n=193</i>	Trump <i>n=138</i>	Other <i>n=29</i>
Comfortable with your choice	92%	93%	86%
Wish you could change	4%	3%	10%
Do not know	3%	4%	4%

May 2017 <i>(Respondents who voted in last presidential election)</i>	Clinton <i>n=313</i>	Trump <i>n=247</i>	Other <i>n=49</i>
Comfortable with your choice	96%	94%	76%
Wish you could change	2%	3%	21%
Do not know	2%	2%	3%

Vote_Nov. Many people will vote in the election for governor and congress in November, however, many other people will not. What would you say are the chances you will vote in the November election? Are you certain to vote, will you probably vote, are the chances fifty-fifty you will vote, OR don't you think that you will vote in the November election?

- 71% Certain to vote
- 16% Probably vote
- 8% Chances fifty-fifty
- 5% Don't think will vote

Pol_Int. Some people don't pay much attention to political campaigns. How about you? Would you say that you are...very much interested, somewhat interested or not very interested in the 2018 elections?

- 48% Very much interested
- 43% Somewhat interested
- 8% Not very interested
- 1% Do not know

Please let me know your opinion of some people involved in politics today. Is your opinion of [FILL name] favorable, unfavorable, undecided, or haven't you heard enough about [FILL name] to have an opinion? (rotated)

	Strongly favorable	Somewhat favorable	Somewhat unfavorable	Strongly unfavorable	Undecided	Don't know
TOM WOLF						
Mar 2018	19%	31%	16%	16%	6%	12%
Sep 2017	16%	20%	8%	34%	12%	10%
Feb 2017	12%	29%	15%	19%	13%	11%
Feb 2016	14%	25%	16%	27%	9%	9%
Oct 2015	15%	23%	13%	20%	16%	13%
Aug 2015	22%	21%	9%	17%	18%	13%
Jun 2015	21%	23%	10%	17%	19%	11%
Mar 2015	22%	18%	11%	16%	22%	11%
Oct 2014	20%	20%	7%	18%	18%	16%
Sept 2014	19%	21%	9%	13%	18%	21%
Aug 2014	18%	19%	7%	10%	22%	24%
Jun 2014	15%	20%	5%	7%	20%	32%
BOB CASEY						
Mar 2018	17%	26%	13%	12%	8%	25%
Sep 2017	17%	28%	10%	14%	11%	20%
Feb 2017	16%	25%	13%	12%	14%	21%
Oct 2013	12%	23%	10%	13%	16%	27%
Aug 2013	12%	22%	11%	13%	17%	26%
May 2013	17%	26%	9%	13%	17%	18%
Feb 2013	13%	27%	11%	13%	16%	21%
Oct 2012	16%	20%	12%	19%	14%	19%
Sep 2012	14%	23%	13%	16%	13%	22%
Aug 2012	11%	25%	12%	10%	16%	27%
June 2012	14%	24%	10%	8%	14%	29%
Jan 2012	9%	20%	9%	8%	18%	35%
Mar 2011	6%	19%	11%	8%	19%	37%
May 2010	10%	23%	9%	11%	16%	31%
Mar 2010	9%	24%	10%	11%	17%	29%
Feb 2010	13%	20%	9%	9%	15%	34%
Jan 2010	9%	23%	11%	9%	17%	31%
Oct 2009	11%	21%	9%	12%	15%	32%
Aug 2009	17%	24%	10%	8%	17%	24%
Jun 2009	11%	21%	12%	5%	17%	34%
Feb 2009	11%	19%	9%	8%	21%	32%
LOU BARLETTA						
Mar 2018	7%	7%	4%	9%	4%	69%
Sep 2017	6%	9%	3%	6%	8%	68%

	Strongly favorable	Somewhat favorable	Somewhat unfavorable	Strongly unfavorable	Undecided	Don't know
DONALD TRUMP						
Mar 2018	21%	15%	11%	49%	2%	2%
Sep 2017	21%	22%	9%	36%	6%	6%
Feb 2017	23%	14%	6%	51%	6%	1%
Oct 2016	23%	12%	6%	56%	3%	1%
Sep 2016	20%	12%	6%	54%	6%	1%
Aug 2016	23%	14%	7%	51%	5%	1%
Jul 2016	20%	13%	5%	57%	5%	0%
Mar 2016	13%	14%	9%	56%	7%	1%
Feb 2016	12%	15%	11%	51%	10%	1%

Vote_Gov1. If the 2018 election for governor were being held today and the candidates included (*rotated*) [Laura Ellsworth, the Republican and Tom Wolf, the Democrat], would you vote for Laura Ellsworth, Tom Wolf some other candidate, or aren't you sure how you would vote?

n=143

- 22% Laura Ellsworth, the Republican
- 51% Tom Wolf, the Democrat
- 2% Some other candidate
- 25% Do not know

Vote_Gov2. If the 2018 election for governor were being held today and the candidates included (*rotated*) [Paul Mango, the Republican and Tom Wolf, the Democrat], would you vote for Paul Mango, Tom Wolf some other candidate, or aren't you sure how you would vote?

n=143

- 22% Paul Mango, the Republican
- 49% Tom Wolf, the Democrat
- 4% Some other candidate
- 25% Do not know

Vote_Gov3. If the 2018 election for governor were being held today and the candidates included (*rotated*) [Scott Wagner, the Republican and Tom Wolf, the Democrat], would you vote for Scott Wagner, Tom Wolf some other candidate, or aren't you sure how you would vote?

n=137

- 21% Scott Wagner, the Republican
- 38% Tom Wolf, the Democrat
- 6% Some other candidate
- 35% Do not know

Sen2018 If the November 2018 general election for U.S. Senator was being held today and the candidates were (*rotated*) [Lou Barletta, the Republican and Bob Casey Jr., the Democrat], would you vote for: Lou Barletta, Bob Casey, Jr., some other candidate, or aren't you sure how you would vote?

- 25% Lou Barletta, the Republican
- 43% Bob Casey, Jr., the Democrat
- 2% Some other candidate
- 30% Do not know

GenBalH If the 2018 elections for the United States House of Representatives were being held today, would you vote for (*rotated*) [the Republican Party's candidate or the Democratic Party's] for the House in your district?

- 35% Republican Party's candidate
- 42% Democratic Party's candidate
- 23% Do not know

Rate_Gov. How would you rate the way that Tom Wolf is handling his job as Governor? Would you say he is doing an excellent job, a good job, only a fair job, or a poor job as Governor?

	Excellent job	Good job	Only a fair job	Poor job	Don't know
Mar 2018	6%	37%	33%	16%	8%
Sep 2017	4%	34%	36%	19%	7%
May 2017	5%	36%	35%	17%	8%
Feb 2017	4%	34%	35%	19%	8%
Feb 2016	4%	27%	32%	29%	7%
Jan 2016	5%	28%	36%	26%	6%
Oct 2015	6%	30%	37%	21%	6%
Aug 2015	7%	32%	34%	17%	10%
Jun 2015	8%	31%	34%	16%	13%
Mar 2015	7%	31%	29%	14%	19%

RateSenC. How would you rate the way that Bob Casey is handling his job as US Senator? Would you say he is doing an excellent job, a good job, only a fair job, or a poor job as US Senator?

	Excellent Job	Good Job	Only a Fair Job	Poor Job	Don't Know
Mar 2018	7%	30%	32%	11%	20%
Sep 2017	8%	29%	27%	15%	22%
May 2017	10%	28%	33%	17%	13%
Feb 2017	10%	27%	31%	14%	18%
Oct 2013	5%	25%	34%	17%	20%
Aug 2013	5%	23%	39%	15%	19%
Oct 2012	6%	31%	33%	18%	12%
Sep 2012	7%	31%	32%	15%	16%
Aug 2012	4%	32%	37%	11%	16%
June 2012	5%	33%	32%	8%	21%
Feb 2012	4%	26%	43%	12%	15%
Jan 2012	4%	31%	36%	11%	19%
Oct 2011	5%	33%	38%	9%	16%
Aug 2011	5%	27%	43%	9%	16%
Mar 2011	3%	26%	39%	9%	23%
Feb 2009	7%	31%	32%	10%	20%
Aug 2007	5%	37%	36%	7%	15%

RatePres. How would you rate the way that Donald Trump is handling his job as president? Would you say he is doing an excellent job, a good job, only a fair job, or a poor job as President?

	Excellent Job	Good Job	Only a Fair Job	Poor Job	Don't Know
Mar 2018	13%	17%	16%	54%	1%
Sep 2017	13%	16%	18%	53%	1%
May 2017	13%	24%	14%	49%	2%
Feb 2017	13%	19%	13%	54%	1%

RightDir All in all, do you think things in Pennsylvania are generally headed in the right direction, or do you feel that things are off on the wrong track?

	Headed in Right Direction	Off on the Wrong Track	Don't know
Mar 2018	46%	40%	15%
Sep 2017	37%	48%	16%
May 2017	31%	50%	19%
Feb 2017	35%	52%	13%
Mar 2016	24%	66%	10%
Feb 2016	21%	67%	12%
Jan 2016	21%	67%	12%
Oct 2015	26%	62%	12%
Aug 2015	32%	54%	13%
Jun 2015	36%	47%	17%
Mar 2015	39%	47%	15%
Oct 2014	28%	61%	11%
Sept 2014	29%	60%	11%
Aug 2014	27%	61%	13%
Jun 2014	30%	59%	11%
Jan 2014	25%	62%	13%
Oct 2013	25%	61%	13%
Aug 2013	26%	62%	12%
May 2013	28%	58%	13%
Aug 2012	31%	56%	13%
June 2012	30%	57%	13%
Feb 2012	31%	56%	13%
Jan 2012	38%	47%	15%
Oct 2011	38%	49%	13%
Aug 2011	34%	53%	13%
Mar 2011	37%	53%	10%
Oct 2010	27%	64%	9%
Sep 2010	31%	59%	10%
Aug 2010	30%	58%	12%
May 2010	35%	55%	10%
Mar 2010	32%	58%	10%
Feb 2010	37%	50%	13%
Jan 2010	39%	53%	8%

MIP_PA. What do you think is the most important problem facing Pennsylvania today?

Oct 2014	Mar 2015	Jun 2015	Aug 2015	Oct 2015	Jan 2016	Feb 2016	Mar 2016	Feb 2017	May 2017	Sep 2017	Mar 2018	
14%	16%	17%	22%	39%	38%	47%	45%	24%	22%	30%	16%	Government, politicians
9%	17%	12%	12%	9%	9%	10%	7%	11%	12%	11%	15%	Taxes
20%	15%	18%	15%	12%	8%	9%	13%	12%	8%	9%	12%	Unemployment, personal finances
2%	3%	2%	3%	2%	3%	2%	1%	5%	5%	6%	10%	Crime, drugs, violence, guns
25%	19%	18%	21%	16%	18%	12%	13%	16%	17%	11%	9%	Education, school
1%	1%	1%	1%	1%	1%	0%	1%	2%	2%	1%	6%	Social issues
5%	6%	7%	4%	4%	4%	4%	5%	3%	3%	7%	5%	Economy, finances
2%	4%	5%	3%	2%	2%	1%	2%	4%	4%	2%	3%	Roads, infrastructure, transportation
2%	4%	1%	1%	2%	2%	1%	2%	4%	8%	4%	2%	Healthcare, insurance
1%	1%	1%	1%	1%	1%	1%	1%	2%	3%	1%	2%	Environment
0%	0%	0%	0%	0%	0%	0%	0%	0%	0%	2%	1%	Bipartisanship
1%	1%	1%	0%	0%	0%	1%	0%	1%	1%	1%	1%	Immigration
1%	1%	0%	1%	1%	0%	0%	1%	1%	0%	1%	1%	Welfare
0%	0%	0%	0%	0%	0%	0%	0%	1%	0%	1%	1%	Racism
0%	0%	1%	1%	1%	0%	1%	1%	2%	1%	0%	1%	Retaining, attracting businesses
0%	0%	0%	0%	0%	0%	0%	0%	1%	0%	0%	1%	Justice system, Lawyers
0%	0%	0%	0%	0%	0%	0%	0%	0%	0%	0%	1%	Population loss, movement out of state
5%	3%	6%	5%	2%	2%	2%	2%	3%	1%	3%	0%	Energy issues, gas prices
1%	2%	1%	2%	0%	1%	1%	1%	1%	0%	1%	0%	Values, morals
0%	1%	0%	0%	0%	0%	0%	0%	1%	0%	1%	0%	Civil liberties
0%	0%	0%	0%	0%	0%	0%	0%	0%	0%	1%	0%	Population, urban sprawl
1%	1%	6%	1%	1%	1%	0%	0%	0%	1%	0%	0%	Senior issues, social security
2%	2%	3%	2%	3%	4%	4%	3%	4%	5%	2%	5%	Other
8%	5%	0%	6%	6%	8%	5%	3%	6%	7%	5%	13%	Don't know

ReDist1. Do you think the state’s congressional districts, as drawn after the 2010 Census, were fairly created or do you think that the districts were created to give one party an advantage over another?

- 16% Fairly created
- 60% Were created to give one party an advantage over another
- 24% Do not know

ReDist2. Pennsylvania’s Supreme Court ordered that the state’s congressional districts should be re-drawn for the upcoming election. Have you heard or read anything about their decision?

- 67% Yes
- 31% No
- 2% Do not know

C1. Now I’d like to ask you a few questions about the environment and energy in the state. Do you think the state of Pennsylvania should do more to address the problems associated with climate change, or not?

- 47% Yes, definitely
- 20% Yes, probably
- 14% No, probably not
- 16% No, not at all
- 3% Do not know

C2. Do you think climate change is causing problems now, do you think the problems created by climate change will not happen until sometime in the future, or do you think climate change will never create any serious problems?

- 62% Causing problems now
- 17% Problems will not happen until sometime in the future
- 12% Will never create any serious problems
- 5% Doesn’t believe that climate change is happening (*accepted if volunteered*)
- 4% Do not know

C3. Have you personally experienced any problems that you think are related to climate change, or not? (*Respondents who believe climate change is happening.*)

- n=402
- 39% Yes
- 53% No
- 8% Do not know

C4. Do you think it is more important for Pennsylvania to pursue energy policies that prioritize the availability of renewable energy such as solar and wind, or do you think it is more important for Pennsylvania to pursue energy policies that prioritize fossil fuel extraction from coal and natural gas?

- 69% Prioritize availability of renewable energy
- 18% Prioritize fossil fuel extraction from coal and natural gas
- 7% Best value (cheapest) for consumers (accept if volunteered)
- 6% Do not know

MS1. In general, would you say that you strongly support, somewhat support, somewhat oppose, or strongly oppose the extraction of natural gas from shale deposits in Pennsylvania?

- 17% Strongly support
- 33% Somewhat support
- 16% Somewhat oppose
- 26% Strongly oppose
- 9% Do not know

MS2. In general, do you approve or disapprove of the way the state legislature has handled the issue of natural gas development in the state?

- 3% Strongly approve
- 16% Somewhat approve
- 26% Somewhat disapprove
- 25% Strongly disapprove
- 30% Do not know

MS3. In general, do you approve or disapprove of the way the Wolf administration has handled the issue of natural gas development in the state?

- 4% Strongly approve
- 22% Somewhat approve
- 27% Somewhat disapprove
- 13% Strongly disapprove
- 34% Do not know

MS4. Is your opinion of the natural gas drilling industry favorable or unfavorable?

Aug 2011	Jan 2014	Mar 2018	
31%	35%	13%	Strongly favorable
35%	29%	34%	Somewhat favorable
12%	12%	23%	Somewhat unfavorable
11%	15%	20%	Strongly unfavorable
11%	10%	9%	Do not know

MS5. Do you believe the potential economic benefits of natural gas drilling outweigh the possible environmental damage that drilling might cause or do you think the potential environmental risks of drilling outweigh the potential economic benefits?

Aug 2011	Jan 2014	Mar 2018	
39%	40%	30%	Economic benefits outweigh the possible environmental damage
35%	37%	55%	Potential environmental risks outweigh the potential economic benefits
26%	22%	15%	Do not know

MS6. Do you think that natural gas drilling in Pennsylvania has improved or reduced the quality of life in those communities where drilling is taking place?

Aug 2011	Jan 2014	Mar 2018	
15%	16%	7%	Greatly improved the quality of life
20%	22%	22%	Somewhat improved the quality of life
17%	13%	23%	Somewhat reduced the quality of life
9%	13%	16%	Greatly reduced the quality of life
--	--	4%	Has not affected the quality of life (<i>only if volunteered</i>)
40%	37%	29%	Do not know

MS7. Some people who lease land to natural gas drilling companies say they have not been paid what they are owed by those companies. Do you believe the state of Pennsylvania needs to strengthen the law that regulates how companies pay landowners or should these agreements and disputes be left to the landowners and companies to work out in court?

67%	State needs to strengthen the law
23%	Disputes be left to the landowners and companies to work out
10%	Do not know

MS8. Have you had any personal experience with the shale gas industry, or not?

- 13% Yes
- 86% No
- 1% Do not know

n=56 <i>(Respondent who have personal experience with shale gas industry) (rotated)</i>	Yes	No	Do not know
Do you or a household member work in the industry?	5%	95%	0%
Do you lease land to a shale gas company	10%	90%	0%
Do you have a neighbor who leases land to a shale gas company?	25%	74%	2%

MS8d. Has your experience with the shale gas industry been positive or negative?

- n=56
- 18% Mostly positive
- 24% Somewhat positive
- 10% Somewhat negative
- 27% Mostly negative
- 20% Do not know

DEMO I now have a final few questions for statistical purposes only.

CNTY. Region of state (What is the name of the county you live in?)

- 37% Central
- 18% Southeast
- 12% Northeast
- 12% Allegheny
- 9% Philadelphia
- 7% Southwest
- 5% Northwest

AGE. What was your age on your last birthday?

- 9% 18-24
- 18% 25-34
- 12% 35-44
- 21% 45-54
- 12% 55-64
- 29% 65 and older

EDUC. What was the highest level of schooling you have completed?

- 1% Non high school graduate
- 17% High school graduate or GED
- 19% Some college
- 14% Associate's degree or technical degree
- 27% Bachelor's degree
- 21% Post graduate degree

MAR. What is your CURRENT marital status...are you single, married, separated, divorced, or a widower?

- 55% Married
- 26% Single, Never Married
- 8% Divorced
- 7% Widow or widower
- 4% Separated

IDEO. Politically speaking, do you consider yourself to be a liberal, a moderate, or a conservative?

	Liberal	Moderate	Conservative	Don't know
Mar 2018	27%	40%	33%	0%
May 2017	26%	41%	30%	2%
Feb 2017	27%	42%	31%	0%
Oct 2016	33%	29%	34%	4%
Sep 2016	31%	28%	38%	4%
Aug 2016	31%	32%	33%	4%
Jul 2016	33%	30%	33%	4%
Mar 2016	24%	35%	37%	3%
Feb 2016	27%	33%	37%	3%
Jan 2016	22%	39%	36%	4%
Oct 2015	22%	38%	37%	4%
Aug 2015	21%	36%	40%	3%
Jun 2015	23%	35%	39%	4%
Oct 2014	23%	37%	36%	3%
Sept 2014	22%	36%	38%	5%
Aug 2014	20%	39%	36%	5%
Jun 2014	26%	36%	34%	5%
Jan 2014	24%	43%	28%	5%
Oct 2013	24%	39%	31%	6%
Aug 2013	22%	42%	33%	3%
May 2013	24%	39%	31%	6%
Feb 2013	26%	36%	35%	3%
Oct 2012	22%	39%	35%	5%
Sep 2012	26%	34%	35%	5%
Aug 2012	21%	40%	36%	4%
June 2012	25%	34%	36%	5%
Feb 2012	17%	39%	40%	4%
Jan 2011	21%	39%	36%	4%
Oct 2011	20%	39%	33%	8%
Aug 2011	24%	32%	37%	7%
Mar 2011	16%	33%	41%	10%
Oct 2010	16%	37%	39%	8%
Sep 2010	15%	34%	40%	10%
Aug 2010	19%	32%	40%	9%
May 2010	19%	32%	40%	9%
Mar 2010	17%	35%	40%	8%
Feb 2010	21%	33%	37%	9%
Jan 2010	19%	30%	42%	9%

PARTY. Regardless of how you are registered... in politics, as of today, do you think of yourself as a Republican, a Democrat, or an Independent?

20%	Strong Republican
10%	Republican
13%	Lean Republican
5%	Independent
15%	Lean Democrat
10%	Democrat
25%	Strong Democrat
2%	Don't know

GUN. Are you a gun owner?

35% Yes
65% No

GUN2. Generally speaking, do you favor or oppose creating more laws that regulate gun ownership?

	Strongly favor	Somewhat favor	Somewhat oppose	Strongly oppose	Don't know
Mar 2018	52%	20%	7%	19%	3%
Sep 2017	38%	23%	11%	24%	4%
Feb 2017	42%	19%	14%	23%	2%
Oct 2016	38%	27%	12%	21%	4%
Sep 2016	44%	21%	10%	23%	3%
Aug 2016	38%	16%	16%	26%	3%
Jul 2016	43%	18%	10%	25%	4%
Mar 2016	42%	17%	10%	28%	3%
Feb 2016	40%	16%	13%	29%	3%
Jan 2016	40%	15%	13%	29%	3%
Oct 2015	43%	13%	10%	31%	4%
Aug 2015	40%	14%	10%	32%	5%
Jun 2015	38%	13%	12%	33%	5%
Oct 2014	42%	12%	8%	37%	2%
Sept 2014	39%	14%	10%	32%	5%
Aug 2014	39%	14%	10%	31%	6%
Jun 2014	43%	12%	9%	31%	5%
Jan 2014	42%	12%	9%	32%	6%
Oct 2013	46%	16%	9%	24%	5%
Aug 2013	39%	12%	13%	33%	4%
May 2013	43%	14%	11%	30%	3%
Feb 2013*	43%	15%	10%	28%	4%
Aug 2007	40%	20%	14%	23%	3%
Jun 2007	39%	15%	12%	31%	3%
Feb 2007	39%	17%	15%	26%	3%

GUN3_A. Would you favor or oppose new laws that banned the sale of assault-style weapons in the state?

n=282

61%	Strongly support
7%	Somewhat support
9%	Somewhat oppose
18%	Strongly oppose
4%	Do not know

GUN4. Would you favor or oppose enhancements to the background check system required to purchase a firearm?

86%	Strongly support
8%	Somewhat support
1%	Somewhat oppose
4%	Strongly oppose
1%	Do not know

GUN5. Do you favor or oppose raising the minimum age to purchase a firearm to 21?

59%	Strongly support
13%	Somewhat support
10%	Somewhat oppose
15%	Strongly oppose
6%	Do not know

LABR. Are you or is any member of your household a member of a LABOR UNION?

22%	Yes
75%	No
2%	Do not know

VET. Are you a military veteran?

10%	Yes
90%	No

Hisp. Are you Hispanic or Latino, or not?

3% Yes
97% No

RACE. Which of the following categories best describes your racial background?

90% White
10% Non-white

REL. Do you consider yourself to be Protestant, Catholic, some other religion, or not affiliated with any religion?

31% Protestant
26% Catholic
18% Some other religion
25% Not affiliated with any religion

BAC. Do you consider yourself to be a born-again Christian or fundamentalist, or not?

21% Yes
76% No
3% Don't know

NUMC. How many children under 18 years of age currently live in your household?

73% None
12% One
14% 2-3
1% 4-5

WORK. Are you currently working fulltime, part-time, going to school, keeping house or something else?

47% Full-time
26% Retired
13% Part-time
5% Going to school
4% Disabled
3% Something else
2% Unemployed

INCOME. And, just for statistical purposes, we need to know if your total family income is above or below \$50,000 per year?

14%	Under \$25,000
11%	\$25-\$35,000
9%	\$35-50,000
26%	\$50-75,000
15%	\$75-100,000
24%	Over \$100,000
1%	Don't know

DONE. Sex of respondent:

48%	Male
52%	Female