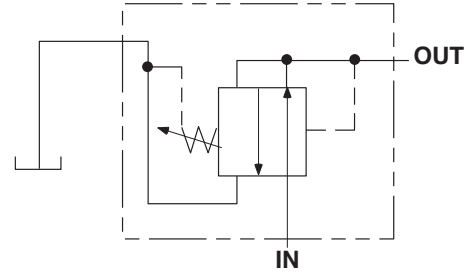
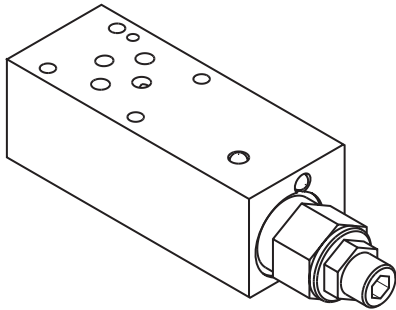




P03MSV-PDRA/P03MSV-PDRB/P03MSV-PDRP
POWRFLOW™
PRESSURE REDUCING / RELIEVING VALVE
 Pilot Operated, Sliding Spool



DESCRIPTION

This pilot operated hydraulic pressure reducing/relieving valve acts as a pressure-regulating device for a secondary circuit. It features a sliding spool and screw-in cartridge.

OPERATIONS

This valve will allow flow from the inlet port to the controlled port until pressure in the controlled port exceeds the force of the spring bias. Then the spool will shift and restrict. This causes reduced pressure in the controlled port. The valve will maintain the same pressure as the force of the spring setting regardless of the pressure at the inlet port. In this mode, the valve will also relieve from the controlled port to the drain port, regulating pressure at the controlled port.

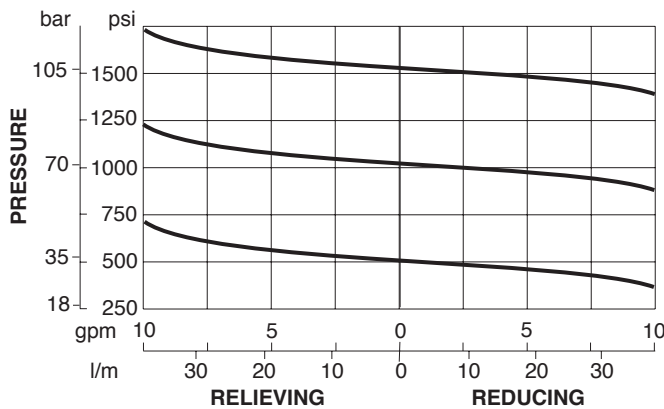
FEATURES & BENEFITS

- Low friction seal on the pilot piston.
- Separate heavy spring assures fast pilot piston return.
- All external parts are zinc-plated for long life against elements.
- All cartridges are 100% tested functionally.
- Industry common cavity.
- Anodized aluminum.

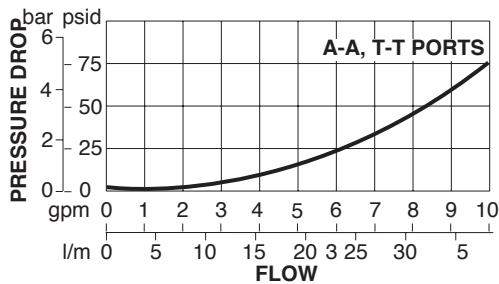
SPECIFICATIONS

- Flow: 10 GPM (38 L/M) nominal.
Refer to performance chart.
- Internal Leakage: 5 cu. in/min. (.82 cc/m) at 85% of crack pressure.
- Valve Bodies: 2500 PSI (175 Bar) = Aluminum (20224-T4)
5000 PSI (350 Bar) = Ductile (65-45-12)
- Operating Temperature: Fluid temperatures up to 200° F. will not appreciably effect valve performance, however, from a safety standpoint, temperatures above 130° F. are not recommended.
- Operating Media: All general purpose hydraulic fluids such as MIL-H-5606, SAE #10, SAE #20, etc.
- Filtration: 25 microns acceptable;
10 microns preferred.

TYPICAL PRESSURE DROP CURVES



FLOW PATH ΔP CURVES



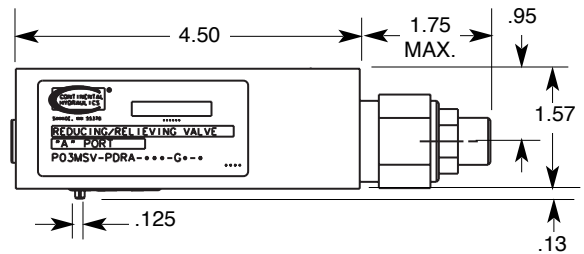
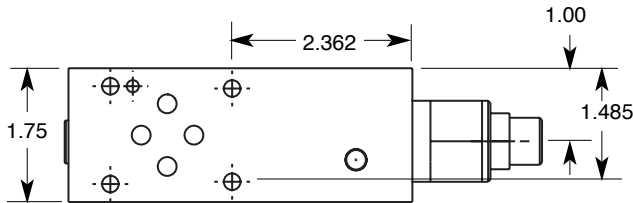
P03MSV-PDRA/P03MSV-PDRB/P03MSV-PDRP
POWRFLOW™
PRESSURE REDUCING / RELIEVING VALVE
 Pilot Operated, Sliding Spool



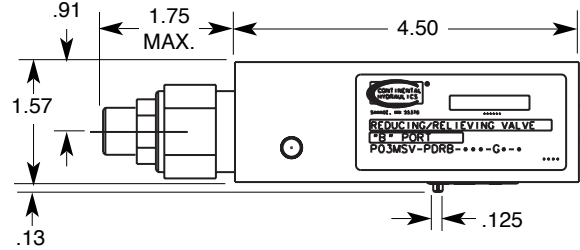
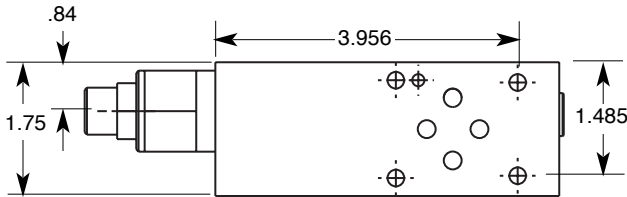
DIMENSIONS

DIMENSIONS SHOWN IN: (MILLIMETERS)
 INCHES

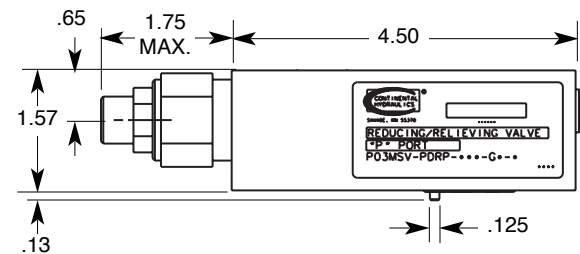
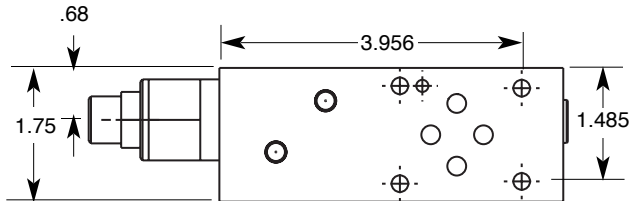
P03MSV-PDRA



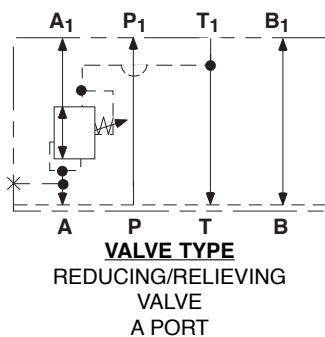
P03MSV-PDRB



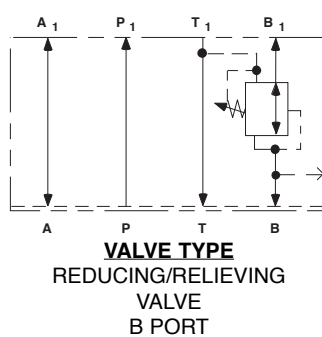
P03MSV-PDRP



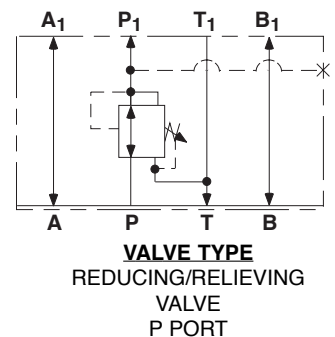
P03MSV-PDRA



P03MSV-PDRB

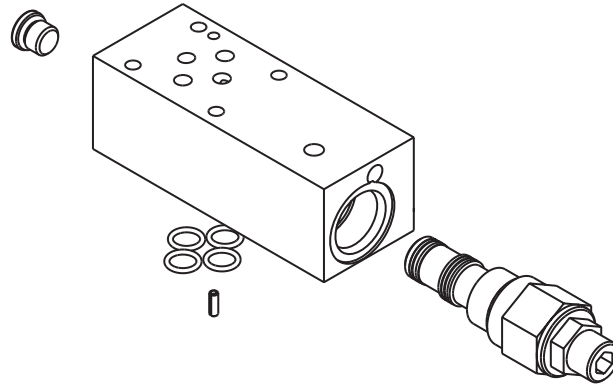


P03MSV-PDRP





P03MSV-PDRA/P03MSV-PDRB/P03MSV-PDRP
POWRFLOW™
PRESSURE REDUCING / RELIEVING VALVE
 Pilot Operated, Sliding Spool



ORDERING INFORMATION

P03MSV — PDR SELECT ONE SELECT ONE SELECT ONE DESIGN
— — **G**

FUNCTION	SIZE	STYLE	VALVE FUNCTION	CONTROL PORT		ADJUSTMENT RANGE		SEALS	BODY MATERIAL	
				CODE	LOCATION	CODE	PRESSURE		CODE	
PRESSURE CONTROL VALVE	NFPA D03	MODULAR STACK VALVE	REDUCING/ RELIEVING PILOT OPERATED	A	A PORT	150	50-1500 PSI	VITON	A	ALUMINUM
				B	B PORT	300	50-3000 PSI		D	DUCTILE
				P	P PORT	500	50-5000 PSI			

Body Only Assembly:

PDRA

Aluminum (Part No.) — 552439K

Ductile (Part No.) — 552559K

PDRB

Aluminum (Part No.) — 552483K

Ductile (Part No.) — 552560K

PDRP

Aluminum (Part No.) — 552484P

Ductile (Part No.) — 552561K

Includes O-rings & Locating Pin.

General Information:

• Cartridge cavity is C1030 with port flow pattern for cartridge flowing from port 2 to port 1; port 3 is drain.

• For other pressure ratings, see CPRRS-10 in the Cartridge Catalog

TYPICAL ORDERING CODE: **P03MSV-PDRA-150-GA**