

# How to use DVB-T/DAB RTL2832 based USB receiver with HSDR

## Hardware requirements:

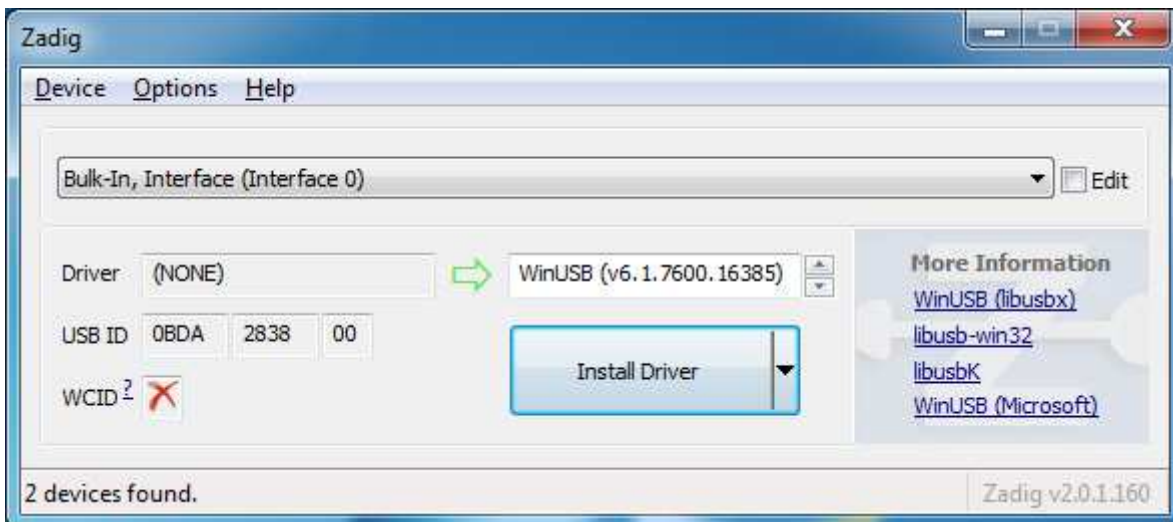
- DVB-T/DAB USB dongle with Realtek RTL2832 chipset (sometimes badly named as RTL2838)
- PC with Dual Core CPU, Soundcard, one free USB 2/3 port

## Software requirements:

- Microsoft Windows XP or newer, **latest Service Pack required!!!** (XP=SP3, Vista=SP2, Win7=SP1)  
Windows 7 or newer recommended!
- HSDR 2.70 or newer (SDR Software application)
- ExtIO\_RTL2832.dll (hardware specific DLL)
- Zadig (device driver installer)

## Installation:

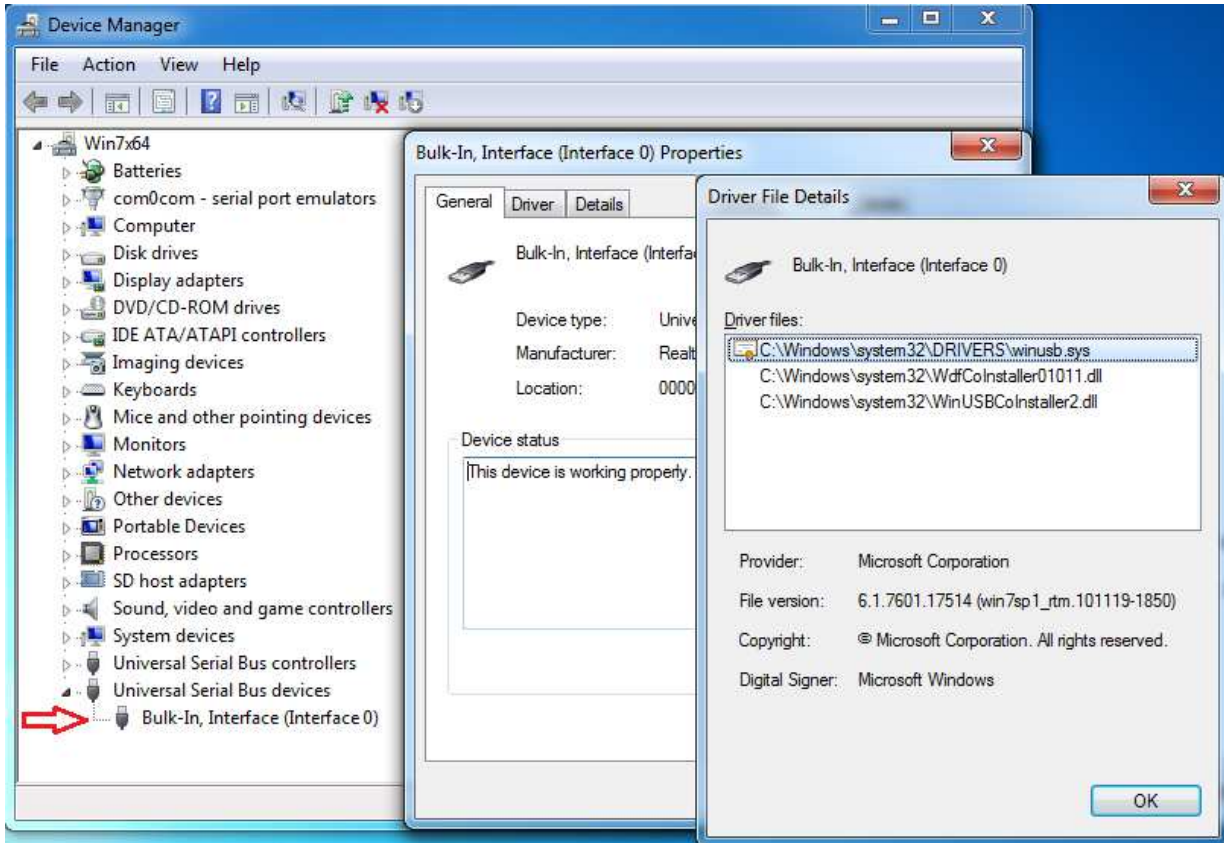
1. Don't install any DVB-T/DAB software delivered with the USB dongle.  
If already done, uninstall this software.
2. Plug in the USB receiver and complete the driver installation by click Next/Finish (if demanded).  
In many cases, Windows install drivers automatically. These will not work for any SDR application!  
The correct driver will be installed later on.
3. Download latest Zadig from <http://zadig.akeo.ie/>  
Windows XP users require a special zadig\_xp version! [http://zadig.akeo.ie/downloads/zadig\\_xp\\_2.2.exe](http://zadig.akeo.ie/downloads/zadig_xp_2.2.exe)
4. Start Zadig and press "Install Driver" to install the WinUSB drivers after selecting the right device(s). The device name is often "Bulk-In, Interface (Interface 0)" or "RTL2838UHIDIR". Is there only an empty list, the device is not properly connected or a driver is already installed. Click Options and enable "List All Devices", then choose the RTL-device and press "Replace Driver". Close Zadig.



5. Download and install HSDR [http://hdsdr.de/download/HSDR\\_install.exe](http://hdsdr.de/download/HSDR_install.exe) , but don't start HSDR immediately.
6. Download ExtIO\_RTL2832.DLL from [http://hdsdr.de/download/ExtIO/ExtIO\\_RTL2832.dll](http://hdsdr.de/download/ExtIO/ExtIO_RTL2832.dll)
7. Copy ExtIO\_RTL2832.DLL into your HSDR installation directory (default=C:\Program Files (x86)\HSDR)
8. (re)start HSDR (select ExtIO\_RTL2832.DLL and preferred output soundcard if demanded)
9. You are ready to run HSDR!

## Troubleshooting:

- check the device compatibility (ask Google)
- avoid USB extension cables and hubs
- try different USB ports
- don't use USB 1.x ports
- If your devices don't work after installing a Windows 10 "feature update" or a upgrade from earlier Windows versions, you need to reinstall the Driver using Zadig (see point 4)
- check Windows Device Manager for a correct installed RTL2832 device



- change all ExtIO-DLL settings to default values

