



COMPANY PROFILE

国華産業株式会社
KOKUKA SANGYO CO.,LTD

Since its establishment in Kobe in 1947, Kokuka Sangyo Co., Ltd. has been involved in the shipping industry, focusing mainly on coastal services. We were first engaged in the transport of coal and inorganic chemicals such as caustic soda. From the 1960s, we began transporting various organic chemicals, such as methanol, as well as venturing into the transport of specialty chemicals. We constructed the world's first molten phthalic anhydride and molten caprolactam carriers as well as Japan's first molten sulfur tanker. We then entered the international shipping business, engaging mainly in methanol transport from 1985. Kokuka Sangyo Co., Ltd. is thus an owner and operator of shipping that has been involved in its central business of liquid chemical transport for 70 years.

It has undergone changes throughout its long history. In 2015, an agreement was reached whereby Mitsubishi Gas Chemical Company, Inc. and Tatsumi Shokai Co., Ltd. came to hold 50% of its capital. We will do our best to build upon technology, knowledge, and experience that have been cultivated thus far to gain the trust of our customers and to continue to be a company that exceeds expectations. We humbly ask for your support, advice, and encouragement.

Yutaka Katada
President

Corporate Philosophy

We ensure safety in all our activities in sea and land transport.

We respond rapidly and reliably to our customers' requirements with our sincere service.

We strive to contribute to society with the safe transport and fair prices we provide.

We manage in accordance with social order and compliance.

Our management prioritizes creating a space for executives and employees to work with dignity and peace of mind.

【Profile】

【Establishment】

March 3, 1947

【Capital】

JPY 100 million

【Main shareholders】

mitsubishi gas chemical
company, inc.
tatsumi shokai co.,ltd.

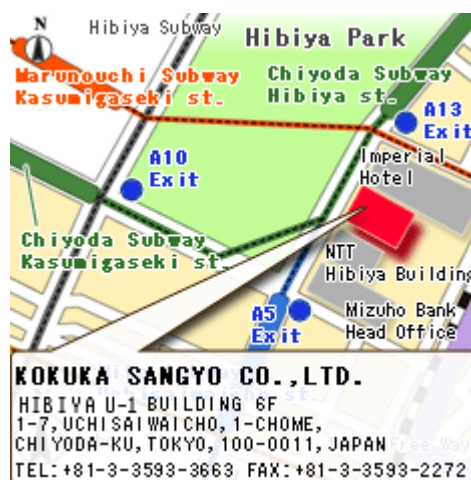
【Employees】

99
(as of June 2014, including affiliated
companies)

【Headquarters】

HIBIYA U-1 BUILDING 6F
1-7, UCHISAIWAICHO, 1-CHOME,
CHIYODA-KU, TOKYO, 100-0011
JAPAN
TEL:+81-3-3593-3663
FAX:+81-3-3593-2272

【MAP】



▲ please click on MAP

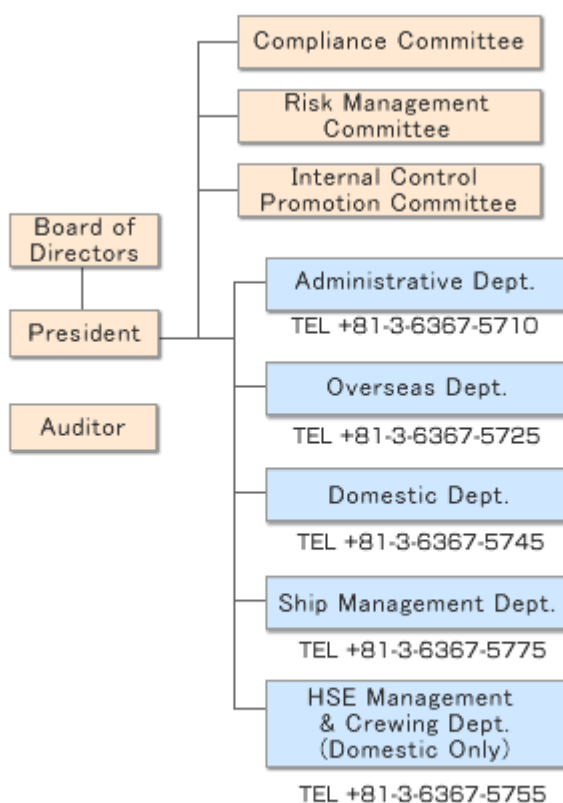
【History】

- 1947 Kokuka Sangyo Kaiun Co., Ltd. is established, with marine transport operation, non-life insurance agent operation and commercial business operation. Begins shipping operations for coals, Carbon sulfide and Sodium hydroxide. Headquarters is established in Ikuta-ku in Kobe City with JPY195,000 in capital.
- 1952 Headquarters is relocated to Kita-ku, Osaka City.
- 1954 The company name is changed to KOKUKA SANGYO CO., LTD.
- 1956 First Sodium hydroxide carrier is completed. Mihara Branch opens.
- 1960 First chemicals tanker "KOKURYU MARU" is completed, begins domestic operation.
- 1961 Capital increases to JPY 5 million by capital participation of Japan Gas Chemical Co., Inc. (current MITSUBISHI GAS CHEMICAL COMPANY, INC.).
- 1964 A chemicals tanker "KOKUHO MARU" is completed, enters oceangoing business. The world's first tanker for high temperature molten materials "OUKA MARU" is completed for shipping Molten phthalic anhydride. The Japan's first medium temperature, medium pressure ammonia tanker "KOKUSHU MARU" is completed.
- 1967 The world's first molten Caprolactam carrier "EIKA MARU" is completed. Japan's first molten Sulphur carrier "KOKA MARU" is completed.
- 1968 Tokyo branch opens in Nishi-shinbashi, Minato-ku, Tokyo. Stainless tanker "YUKA MARU" is completed.
- 1975 Capital increases to JPY 250 million, Matsuyama Branch opens.
- 1980 IWAI KAIUN LTD. is established.
- 1989 Container ship "NISHO MARU" is completed.
- 2001 Stock is transferred from TEIJIN LIMITED to MITSUBISHI GAS CHEMICAL COMPANY, INC.
- 2002 Enters business of shipping Methanol from Saudi Arabia.
- 2003 Enters business of shipping Methanol from Venezuela.
- 2005 Headquarters is relocated to Toranomom, Minato-ku, Tokyo. A Hydrogen peroxide carrier "RYOJITSU MARU" is completed.
- 2006 An LPG carrier "SAKURA HARMONY" is completed, enters oceangoing petroleum gas shipping business.
- 2008 Super eco ship "KOKUHO MARU" is completed.
- 2009 Our largest chemicals tanker "JOSE PROGRESS" is completed.
- 2010 Headquarters is relocated to Uchisaiwaicho, Chiyoda-ku, Tokyo.
- 2011 Capital reduction to JPY 100 million.
- 2013 Receives TATSUMI SHOKAI CO., LTD.'s capital participation.
- 2015 An LAG carrier "KOKUSHU MARU" is completed.

【Directors】

President	Yutaka Katada
Vice President	Toru Maehara
Managing Director	Masaji Furuta
Director	Soichiro Ueda
Director	Michio Yube
Auditor	Daisuke Korin
Auditor	Hideki Honda

【Organization】



[Affiliated Companies]

IWAI KAIUN LTD. HIBIYA U-1 BUILDING 6F
1-7, UCHISAIWAICHO, 1-CHOME, CHIYODA-
KU, TOKYO, 100-0011 JAPAN
TEL +81-3-6367-5799
FAX +81-3-3593-2272

KSK (PANAMA) CORP.
M&K OCEAN S.A.
COURAGEOUS & KSK(PANAMA) S.A.
GLORIOUS & KSK(PANAMA) S.A.
VIGOROUS & KSK(PANAMA) S.A.

[Main Customer]

ADEKA CHEMICAL SUPPLY CO.,LTD.
ASAHI TANKER CO., LTD.
AST CORPORATION
Brunei National Petroleum Company Sendirian Berhad
CG ESTER CORPORATION
Hanwa Co., LTD.
INEOS Fluor Holdings Limited.
ITOCHU Corporation
JFE LOGISTICS CORPORATION
Marubeni Chemix Corp.
Marubeni Corporation
MARUZEN PETROCHEMICAL CO., LTD.
Mexichem Fluor Japan Limited.
MITSUBISHI CHEMICAL LOGISTICS CORPORATION
Mitsubishi Corporation
MITSUBISHI GAS CHEMICAL COMPANY, INC.
MITSUI & CO., LTD.
NANIWA TANKER CO., LTD.
New Japan Chemical Co., Ltd.
NIPPON RYUTAN KOGYO CO., LTD.
Nippon Steel Chemical Co., Ltd.
Petroquimica de Venezuela, S.A.
Samsung C&T Japan Corporation
Sojitz Corporation
Sumika Logistics Co., Ltd.
Sumitomo Chemical Co., Ltd.
TATUMI SHOKAI CO., LTD
TEIJIN CO., LTD.
Tokuyama Logistics Corp.
UBE INDUSTRIES, LTD.

[Cargoes]

1.4-Butanediol	Molten caprolactam
Acetic acid	Molten sulphur
Acetone	MTBE
Acrylonitrile	Neopentyl glycol
Allyl alcohol	Nitric acid
Benzene	Petroleum products
Butadiene	Phenol
Carbon disulfide	Plasticizers
DMF	Propylene
Ethanol	Sodium hydroxide
Ethylbenzene	Styrene monomer
Ethylene glycol	Toluene
Hydrochloric acid	Vinyl acetate monomer
Hydrogen peroxide	Xylenes
Liquid ammonia	Others
LPG	
Methanol	
MMA	



**Safety of the ships,
Human lives and health,
Environment,
Property**

**maintaining and preserving them
is our principle.**

It is our social mission to make broad social contribution through the marine transport of chemical products, and we believe our top priorities are safe marine navigation and environmental protection. In order to thoroughly communicate our belief both internally and externally, we have established the above "Principle".

For the realization of the Principle, we have created "Safety Control Manual" in accordance with the ISM Code, and are utilizing it as the guidelines for our operational activities. Additionally, we continuously make improvements in the manual by applying the PDCA Cycle.

Recognizing that accidents must not occur, we have developed a system within our company to allow for the operations based on the technical and specialist perspectives. We have also developed a structure for the system to allow for individual teams to operate jointly and organically. The system consists of two teams-"HSE Management&Crewing Dept. and Ship Management Dept."

With our charter ship owners and domestic shipping management companies, we establish "Chartered Ship Management Regulation" and provide a support system based on the information provided about crew, maintenance record and such. We have also organized "KOKUKA Management Committee" in order to conduct joint safety activities by exchanging information and views.

[OVERSEAS DEPT.]**Specialized Chemicals Shipping**

We offer shipping with high temperature Molten materials carriers. We have more than 40 years of experience in this area as the global pioneer, especially being highly reputable in the services provided for molten Sulphur and molten Caprolactam.



CHISHU

Methanol Shipping

Currently, we operate six chemicals tankers of between 6,000DWT and 47,000DWT, mainly carrying Methanol being produced in Saudi Arabia, Brunei and Venezuela. Primarily transporting from Middle East (Saudi Arabia) to the Far East and the Southeast Asia, from Southeast Asia (Brunei) to Far East and Southeast Asia, from South America (Venezuela) to North America and Europe, we are currently shipping 1.8 million ton annually. To meet the growing demands created by the increasing production capability of the plants, we are further expanding our transportation capacity.



KOZAN MARU V

[DOMESTIC DEPT.]

KUNIFUJI MARU



EIKA MARU



No2 SHUKA MARU

Liquid Chemicals Shipping

We offer domestic chemicals carrier with volume ranging from 1,000 to 2,000DWT, and are equipped with a variety of ships to handle all types of chemicals, running services nationwide. Shipping items include general liquid chemicals such as Methanol, Xylene and so on, as well as liquid Anmonia, molten Sulphur, Hydrogen peroxide and Carbon disulfide. We have gained trusts of our customers with our specialty tankers, operated with the many years of experience in the field, and with our commitment to stable and safe shipping as our top priorities. We are daily making further efforts for improvements in order to respond to the diverse requests we receive.

[Oceangoing]

Name	Cargoes	IMO	Dimensions(M)			GRT	DWT	Capacity	Draft	Speed	Built
			Length	Breadth	Depth						
JOSE PROGRESS	CHEMICALS	3	185.93	32.20	19.30	30,969	47,018	58,432	11.972	15.1	2009.02
KOHZAN MARU	CHEMICALS	2	182.03	28.20	18.20	25,184	37,784	46,695	11.300	14.9	2007.10
KOKUKA VIGOROUS	CHEMICALS	2	170.00	26.80	15.60	19,349	26,980	33,600	10.281	14.3	2011.08
KOKUKA GLORIOUS	CHEMICALS	2	170.00	26.80	15.60	19,349	26,960	33,600	10.281	14.3	2011.03
KOKUKA COURAGEOUS	CHEMICALS	2	170.00	26.80	15.60	19,349	27,000	33,600	10.281	14.3	2010.10
ACACIA	CHEMICALS	2	132.4	20.00	11.90	8,535	13,565	14,561	8.800	14.0	2010.09
RAKIS	CHEMICALS	2	94.00	18.00	9.60	4,906	6,269	7,320	6.500	13.5	2010.04
KOYOMARU	MOLTEN SULPHUR	3	97.0	14.80	8.20	3,535	4,300	2,600	5.600	12.0	2009.09
KOHSHIN MARU	MOLTEN SULPHUR	3	99.92	14.50	7.80	2,999	3,999	2,373	5.760	13.0	1998.09
SULPHUR ESPOIR	MOLTEN SULPHUR	3	99.92	14.50	7.80	2,976	3,999	2,208	5.710	13.5	1995.09
KOKA MARU	CHEMICALS	2	82.05	13.60	7.00	2,362	2,999	1,596	5.550	12.8	2017.09
CHISHU	MOLTEN CAPROLACTAM	3	79.97	13.20	6.20	1,865	1,866	1,689	4.300	13.5	2003.09
Total 12ships						141,378	202,739				

Particulars



[Domestic]

Name	Cargoes	I M O	Dimensions(M)			GRT	DWT	Capacity		Draft	Speed	Built
			Length	Breadth	Depth			M3	M	Knots		
KOKUHO MARU	CHEMICALS	2	80.60	12.20	5.80	1,066	2,306	2,500	5.262	12.8	2008.06	
KOKUSHU MARU	LAG		69.95	12.20	5.44	999	1,320	1,714	4.55	13.0	2015.03	
SHOEI MARU	GAS		70.00	12.20	5.50	995	1,361	1,679	4.570	11.5	1992.06	
NO2 RYOEI MARU	CHEMICALS	2	72.00	11.50	5.40	748	1,853	1,850	4.800	12.0	2007.06	
RYOEI MARU	CHEMICALS	2	72.00	11.50	5.40	747	1,879	1,850	4.800	12.5	2004.04	
RYOJITSU MARU	CHEMICALS	2	72.00	11.00	5.00	696	1,645	1,397	4.300	11.5	2005.09	
KUNIFUJI MARU	CHEMICALS	2	64.98	10.00	4.50	499	1,199	1,230	4.150	12.0	2002.08	
EIKA MARU	CHEMICALS	2	64.93	10.00	4.50	499	1,199	1,230	4.520	11.0	2006.11	
NO2 EIKA MARU	CHEMICALS	2	64.46	10.00	4.50	499	1,265	1,230	4.450	11.7	2010.04	
SORYO MARU	CHEMICALS	2	64.98	10.00	4.50	498	1,296	1,230	4.60	11.0	2009.02	
NO2 SHUKA MARU	CHEMICALS	2	64.98	10.00	4.50	498	1,199	1,230	4.100	11.0	2008.03	
KOKUSHO MARU	CHEMICALS	2	64.80	10.20	4.50	498	1,311	1,234	4.200	11.7	2008.10	
WAKA MARU	CHEMICALS	3	65.98	10.00	4.50	498	1,315	1,370	4.600	10.6	2010.05	
SHINNICHI RYUMARU	CARBON DISULFIDE	2	41.75	7.00	3.35	179	266	182	2.890	10.0	1994.04	
Total 14ships						8,919	19,414					