

MOHAWK

PRE-EXISTING SLAB REQUIREMENTS & NEW SLAB RECOMMEDATIONS



MOHAWK RESOURCES LTD.

65 VROOMAN AVE.
AMSTERDAM, NY 12010
TOLL FREE : 1-800-833-2006
LOCAL : 1-518-842-1431
FAX : 1-518-842-1289
INTERNET: www.MOHAWKLIFTS.com
E-MAIN: Service@MOHAWKLIFTS.com

Mohawk Resources Ltd.



PRE-EXISTING Minimum Floor Requirements

Mohawk Lift Model	Minimum Slab Thickness	Minimum Compressive Strength	Reinforcement Size	Reinforcement Spacing (Rebar)
A-7	4-1/2"	4000 psi with 28 day aging	#6 rebar	12 in.
System IA	4-1/2"	4000 psi with 28 day aging	#6 rebar	12 in.
System IA-10	4-1/2"	4000 psi with 28 day aging	#6 rebar	12 in.
LMF-12	6 1/2"	4000 psi with 28 day aging	#6 rebar	12 in.
TP-15	6 1/2"	4000 psi with 28 day aging	#6 rebar	10 in.
TP-16	6 1/2"	4000 psi with 28 day aging	#6 rebar	10 in.
TP-18	8"	4000 psi with 28 day aging	#6 rebar	10 in.
TP-20	8"	4000 psi with 28 day aging	#6 rebar	10 in.
TP-26	12"	4000 psi with 28 day aging	#6 rebar	10 in.
TP-26-W	8"	4000 psi with 28 day aging	#6 rebar	10 in.
TP-30	12"	4000 psi with 28 day aging	#6 rebar	10 in.
TP-30-W	8"	4000 psi with 28 day aging	#6 rebar	10 in.
TR-19	4 1/2"	n/a	ACI Temp only*	ACI Temp only*
FL-25	4 1/2"	n/a	ACI Temp only*	ACI Temp only*
TR-25A	4 1/2"	n/a	ACI Temp only*	ACI Temp only*
TR-33	6" or (4 1/2" **)	n/a	ACI Temp only*	ACI Temp only*
TR-35	6" or (4 1/2" **)	n/a	ACI Temp only*	ACI Temp only*
TR-50	6" or (4 1/2" **)	n/a	ACI Temp only*	ACI Temp only*
TR-75	6" or (4 1/2" **)	n/a	ACI Temp only*	ACI Temp only*

* The floor must be properly aged to American Concrete Institute specifications. The floor does not require reinforcement, but a minimum of wire mesh is recommended.

** Larger 4' x 4' base pads (available from Mohawk) required for floors with a thickness range less than 6", but greater or equal to 4 1/2".

The floor should be test drilled to verify minimum floor thickness and to confirm building drawings. A core sample should be obtained and tested to verify minimum floor compressive strength. When investigating floor properties, consult building drawings to verify proper floor reinforcement.

All 2-post lifts require a continuous single slab. Spanning expansion seams or positioning posts on separate slabs is not acceptable.

--- ALL MOHAWK LIFTS MUST BE INSTALLED ON CONCRETE ONLY ---

DO NOT install any Mohawk lift on any surface other than concrete, conforming to the minimum compressive strength, aging, reinforcement, and thickness stated in the table above.

DO NOT install any Mohawk lift on expansion seams or on cracked or defective concrete. All 3/4 inch diameter anchors must be a minimum of 6 inches away from any expansion seams, control joints or other inconsistencies in the concrete. All 1 inch diameter anchors must be a minimum of 7 1/2 inches away from any expansion seams, control joints or other inconsistencies in the concrete. Refer to anchor manufacturer specifications for specific information concerning edge distances and bolt to bolt distance requirements.

NEVER, NEVER install a Mohawk lift on hand mixed concrete.

DO NOT install any Mohawk lift on a secondary floor level or on any ground floor with a basement beneath without written authorization from the building architect and prior consultation and approval from Mohawk Resources Ltd.

If the floor does not meet these minimum pre-existing floor requirements, it is suggested to construct a slab as outlined in *New Slab Recommendations*. If the location of the lift is in a seismic zone, contact Mohawk Resources Ltd. for seismic slab designs.

New Slab Recommendations:

The information contained in this appendage supercedes any other information given in the accompanied manual. This information is presented for design recommendations for a new concrete slab in the event that the pre-existing floor does not meet minimum requirements of the applicable lift type. Please read all instructions below carefully before producing new slab.

Basic Concrete Requirements:

Minimum Tensile Strength of Concrete:	4,000 P.S.I.
Minimum Aging of New Concrete Slab:	28 days (cure time)
Minimum Thickness of Concrete Slab:	See New Slab Table & Figure Attached
Minimum Width and Length of Slab:	See New Slab Table & Figure Attached

All properties of the new concrete slab are mandatory and must conform to the above stated properties before installation of the lift is deemed acceptable. The new slab must be totally surrounded by an existing concrete floor. Certified strength documentation should be obtained from the firm who supplies the concrete mixture at the time of the pour.

The slab above is designed as “stand alone” and does not take into account the contribution of strength from surrounding concrete. It may be desirable to reinforce the new slab to the pre-existing surrounding floor. Care should be taken to locate these specific reinforcement bars away from any anchor positions of the specific lift.

This new slab design does not account for second floor installations or installations in a ground floor with a basement beneath. For this case, the lift should not be installed without written authorization from the building architect.

All ¾ inch diameter anchors must be a minimum of 6 inches away from any expansion seams, control joints or other inconsistencies in the concrete. All 1 inch diameter anchors must be a minimum of 7 ½ inches away from any expansion seams, control joints or other inconsistencies in the concrete. Refer to anchor manufacturer specifications for specific information concerning edge distances and bolt to bolt distance requirements.

NEVER, NEVER, hand mix your own concrete.

New Slab Recommendations

File: New-slab.xls

Rev Date: 6/7/06

NEW SLABS MUST BE 12" THICK MINIMUM !! (See Notes Below)

Lift Model	W Slab Width, (Inches)	L Slab Length, (Inches)	R Reinforcement Size, (Inch) (See Note 1 & 2)	S1 & S2 Reinforcement Spacing, (Inch) (See Note 3)	D Wej-it Dia, (Inch)	I Wej-it Length, (Inch)
A-7	48" Min	144" Min	8 - #4 - Main Bars 21 - #4 - Temperature Bars	6 in - Long Bars 8 in - Short Bars	3/4 in	5 in
System IA	48" Min	161" Min	8 - #4 - Main Bars 21 - #4 - Temperature Bars	6 in - Long Bars 8 in - Short Bars	3/4 in	5 in
System IA-10	48" Min	161" Min	8 - #4 - Main Bars 21 - #4 - Temperature Bars	6 in - Long Bars 8 in - Short Bars	3/4 in	5 in
LMF-12	72" Min	168" Min	12 - #4 - Main Bars 23 - #4 - Temperature Bars	6 in - Long Bars 8 in - Short Bars	3/4 in	6 in
TP-15	72" Min	168" Min	12 - #4 - Main Bars 23 - #4 - Temperature Bars	6 in - Long Bars 8 in - Short Bars	3/4 in	6 in
TP-16	72" Min	168" Min	12 - #4 - Main Bars 23 - #4 - Temperature Bars	6 in - Long Bars 8 in - Short Bars	3/4 in	6 in
TP-18	72" Min	186" Min	18 - #4 - Main Bars 24 - #4 - Temperature Bars	4 in - Long Bars 8 in - Short Bars	3/4 in	6 in
TP-20	72" Min	186" Min	18 - #4 - Main Bars 24 - #4 - Temperature Bars	4 in - Long Bars 8 in - Short Bars	3/4 in	6 in
TP-26	72" Min	198" Min	18 - #4 - Main Bars 24 - #4 - Temperature Bars	4 in - Long Bars 8 in - Short Bars	1 in	10 in
TP-30	72" Min	198" Min	18 - #4 - Main Bars 24 - #4 - Temperature Bars	4 in - Long Bars 8 in - Short Bars	1 in	10 in
TR-19 *	24" Min	24" Min	4 - #4 Bars 8 Bars Total	6 in - Each Way	3/4 in	5 in
FL-25 *	24" Min	24" Min	4 - #4 Bars 8 Bars Total	6 in - Each Way	3/4 in	5 in
TR-25 *	24" Min	24" Min	4 - #4 Bars 8 Bars Total	6 in - Each Way	3/4 in	5 in
TR-33 *	72" Min	72" Min	12 - #4 Bars 24 Bars Total	6 in - Each Way	3/4 in	5 in
TR-35 *	72" Min	72" Min	12 - #4 Bars 24 Bars Total	6 in - Each Way	3/4 in	5 in
TR-50 *	72" Min	72" Min	12 - #4 Bars 24 Bars Total	6 in - Each Way	3/4 in	5 in
TR-75 *	72" Min	72" Min	12 - #4 Bars 24 Bars Total	6 in - Each Way	3/4 in	5 in

* Four Separate Slabs Formed at each Post.

Note 1: An additional layer of 6 x 6 - 10/10 WWF at mid height of new slab would be advisable in any extremely hot or cold climate to control cracking due to temperature fluctuations and shrinkage.

At anchor bolt locations only keep WWF mesh below the elevation of the anchorage to avoid drilling interference with the wire.

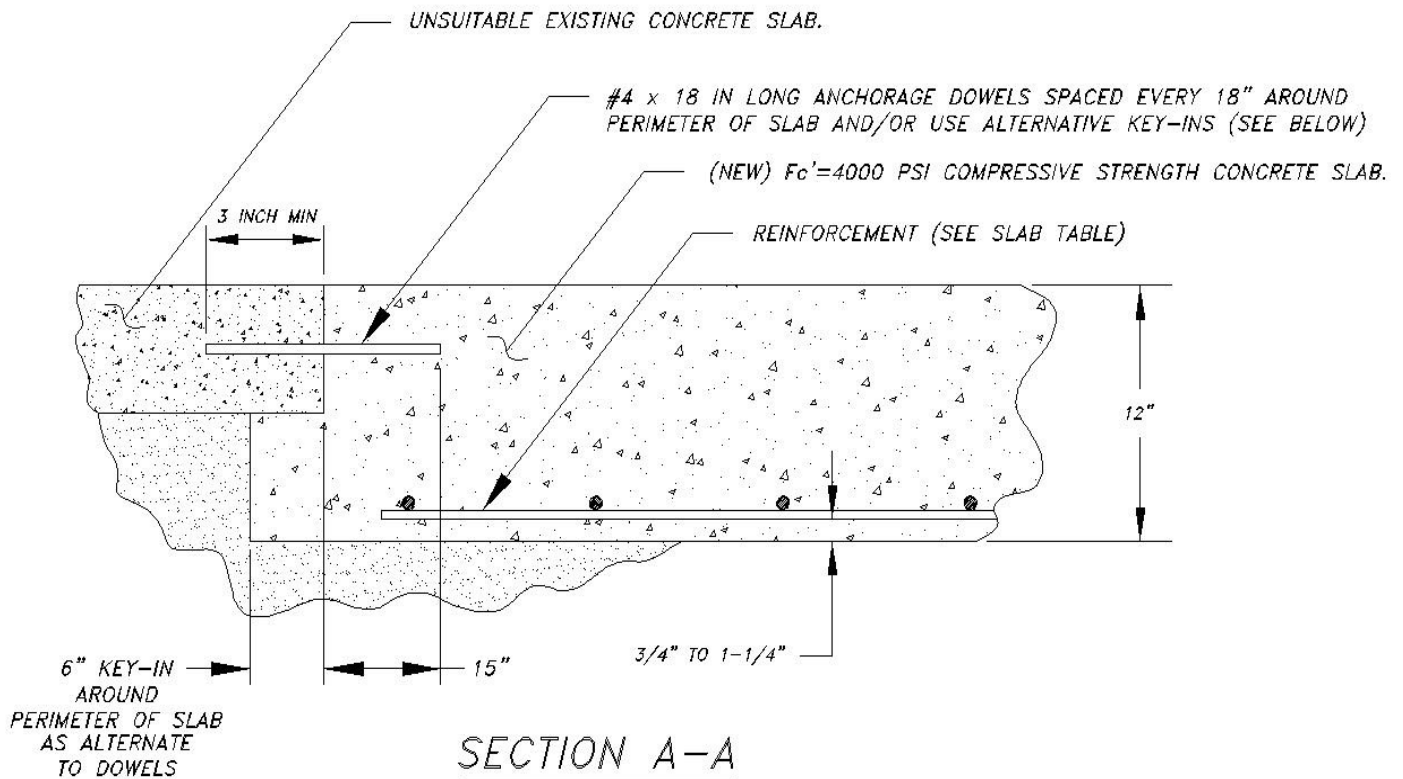
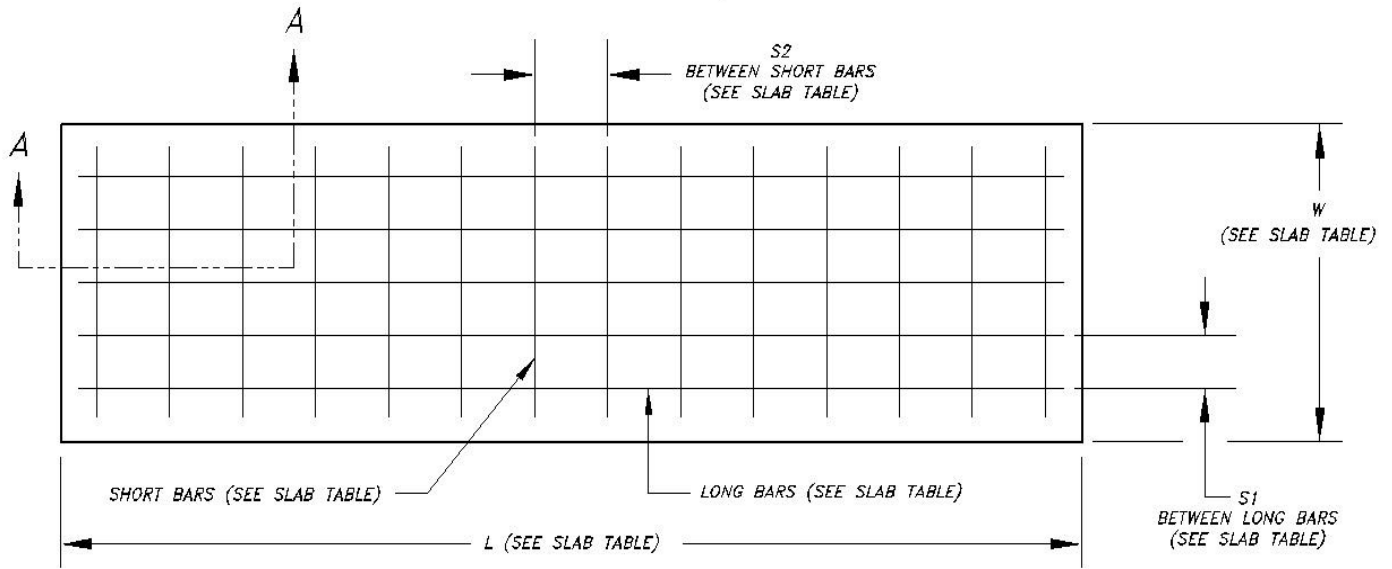
Note 2: The main reinforcing and lower temperature steel shall be Grade 60 deformed bars

Note 3: The tolerance on spacing of the bars in each direction shall be the value shown, plus or minus 1 inch. In addition, the number of bars specified in the table must be used.

Note 4: The concrete outline dimensions and the reinforcing shown are for a foundation bed allowable bearing capacity of not less than 2,000 lb/sq ft (1 ton per square foot). Many clays, and most all firm clay, hard clay, sand & clay mixes, dry sands, coarse dry sands, dry sand and silt mixes, sand and gravel mixes, and gravel type soils meet or exceed this allowable bearing capacity. If there is question regarding the foundation bed allowable bearing capacity, a soils testing engineer should be consulted. Situations where the allowable bearing capacity is lower than this value will require special attention.

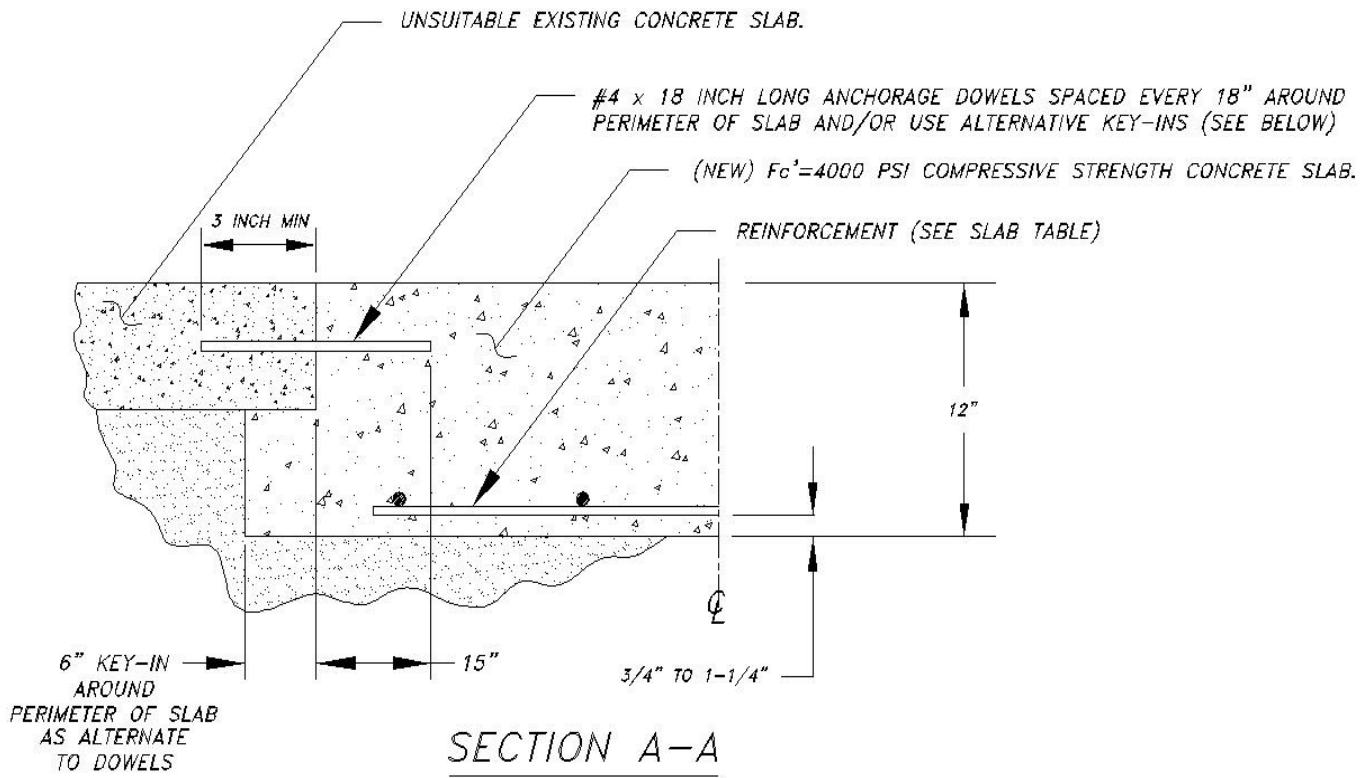
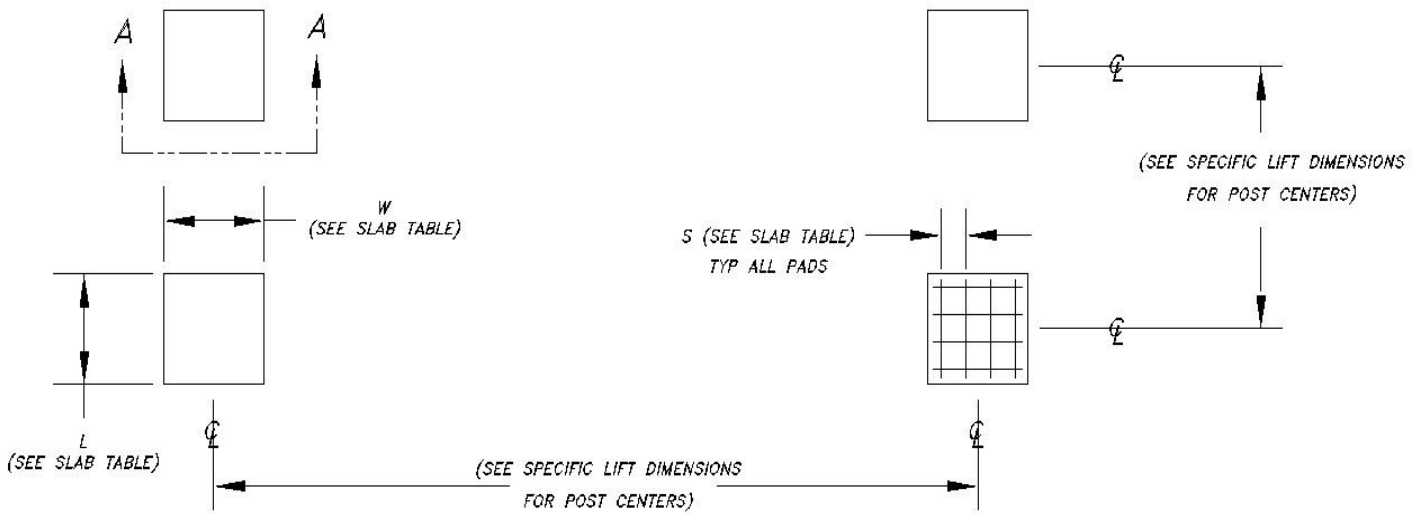
NEW RECOMMENDED SLAB DESIGN FOR 2-POST LIFTS

FILE: MAN066
DATE: 2/98
REV DATE: 7/2003



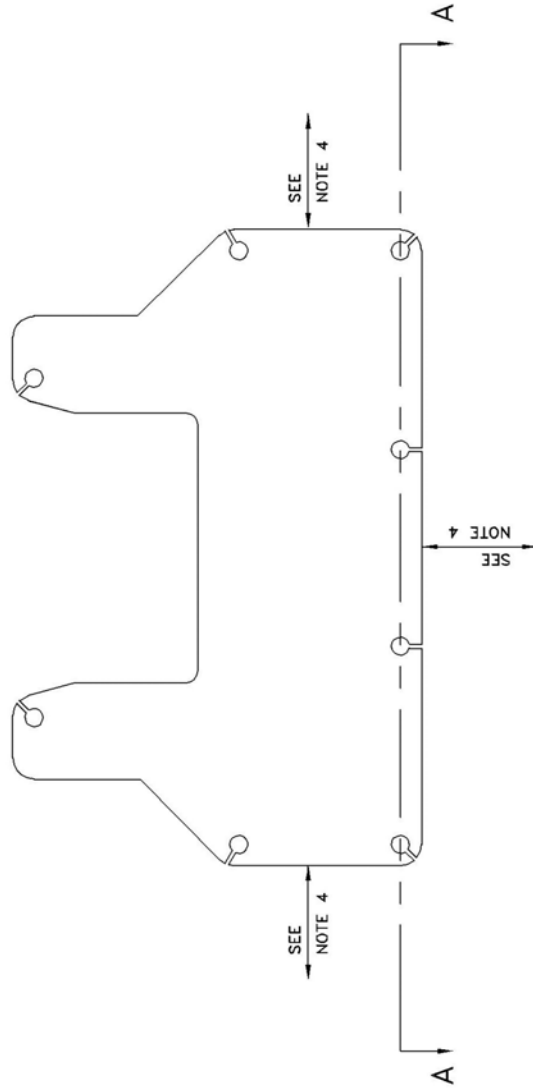
NEW RECOMMENDED SLAB DESIGN FOR 4-POST LIFTS

FILE: MAN089
DATE: 10/00
REV DATE: 7/2003



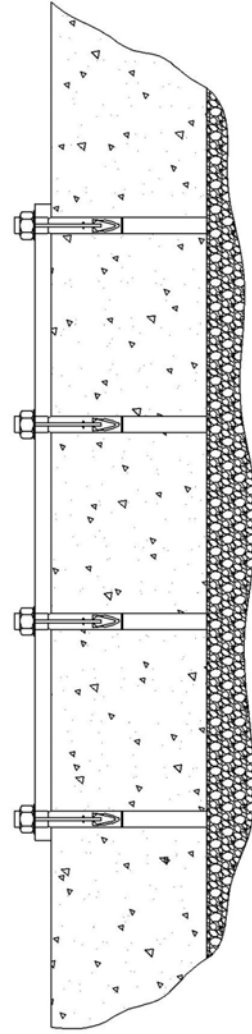
REV.	DESCRIPTION	DATE	BY	APP'D.
△				

TYPICAL BASE PLATE DETAIL
(SYSTEM IA SHOWN BELOW - 8 ANCHORS PER BASE PLATE)



BASE PLATE ANCHORING INSTRUCTIONS:

1. LOCATE POSTS IN DESIRED LOCATION OF BAY, PER LIFT SETUP DIMENSIONS. REFER TO LIFT MANUAL FOR INSIDE DIMENSIONS OF COLUMNS, ETC.
(FOR SYSTEM IA-10, THE INSIDE POST DIMENSION IS 120")
2. MATCH DRILL ALL BASE PLATE HOLES. REFER TO ANCHOR BOLT INSTALLATION SPECIFICATIONS ATTACHED FOR DRILL SIZE. (3/4" DIAMETER ORIGINAL WEJ-IT STYLE EXPANSION ANCHOR BOLTS).
3. INSTALL ANCHORS PER ANCHOR BOLT INSTALLATION SPECIFICATIONS ATTACHED. SHIM UNDER BASE PLATE AS NEEDED TO ENSURE THAT POSTS ARE SQUARE AND PLUMB (MAXIMUM OF 1/4") WITH COLORED SHIMS PROVIDED (HORSESHOE SHAPED).
4. ALL ANCHORS MUST BE A MINIMUM OF 6" AWAY FROM ANY EXPANSION SEAM, CONTROL JOINT, OR OTHER FLOOR INCONSISTENCIES.
5. DRILLING THRU ENTIRE SLAB THICKNESS IS PREFERRED WHEN POSSIBLE. THIS ALLOWS ANCHORS TO BE HAMMERED FLUSH TO CONCRETE IF LIFT IS RE-LOCATED.



SECTION A-A:

C-SIZE

NOTICE OF CONFIDENTIAL INFORMATION

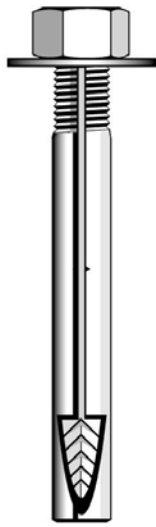
INFORMATION CONTAINED HEREIN IS CONFIDENTIAL AND PROPERTY OF MOHAWK RESOURCES LTD. IT SHALL BE USED SOLELY FOR PURPOSES OF INSPECTION, INSTALLATION, OR MAINTENANCE. THE INFORMATION SHALL NOT BE USED OR DISCLOSED BY THE RECIPIENT FOR ANY OTHER PURPOSES WHATSOEVER.

- NOTES:**
1. REMOVE ALL SHARP CORNERS & EDGES.
 2. FINISH TO BE 125 RMS.
 3. WELDING MEDIUM SHALL CONFORM TO AWS SPECIFICATIONS TO E-70XX ELECTRODES OR E-70TI CODE 5.3 FLUX CORE WIRE ONLY.

TOLERANCES:	± 1°
ANGULAR	± .030
DECIMAL	± .008
FILE NAME	ZZ912

009-010-006	009-010-006
NEXT ASSEMBLY	

SCALE	1/4	DRAWN	rww/7089	MOHAWK RESOURCES LTD.	
CHECKED	R.V.	APPROVED		TITLE	Base Plate Anchoring Detail
DATE	2/05	WEIGHT	N/A	FROM	N/A
		LB.	N/A	DRAWING NUMBER	ZZ912



The Original **wej-it**® Wedge Anchors

KEY FEATURES/BENEFITS

- **Time-Tested, Proven Reliability.** An industry standard for over 45 years.
- **Fully Assembled and Ready to Use.** Unparalleled job-site convenience.
- **BOLT SIZE IS HOLE SIZE.®** Allows precision placement of equipment through pre-drilled holes.
- **Exclusive "Positive Wedge Connections."** Minimizes wedge loosening due to vibratory loads.



SPECIFICATIONS, APPROVALS AND LISTINGS

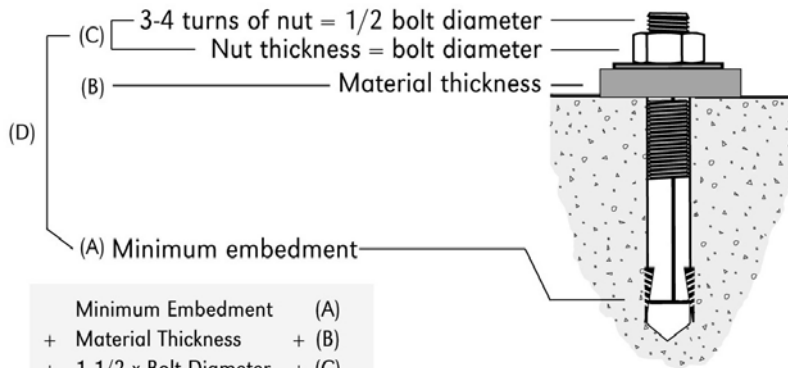
TYPE	
Zinc Plating	ASTM B-633, Type III, SCI
ICBO-ES	Report #1821
City of Los Angeles	#RR 24939
DOT	Please call Customer Service for specific information by state.
Federal Specifications	QQZ-325C, Type II, Class 3 (Clear Chromate added) FFS-325, Group II, Type 4, Class 1

MAXIMUM TENSILE AND SHEAR CAPACITY FOR STATIC LOADS

Anchor & Hole Size	LIMESTONE AGGREGATE			UNREINFORCED STONE AGGREGATE CONCRETE				UNREINFORCED LIGHTWEIGHT (IDEALITE)					
	Embedment (in)	2000 psi Tension (lbs)	2000 psi Shear (lbs)	Embedment (in)	3000 psi Tension (lbs)	3000 psi Shear (lbs)	5000 psi Tension (lbs)	5000 psi Shear (lbs)	7000 psi Tension (lbs)	7000 psi Shear (lbs)	Embedment (in)	5000 psi Tension (lbs)	5000 psi Shear (lbs)
3/4	•	•	•	3	11579	15537	19299	21000	27019	23103	3 1/2	17293	19050
3/4	•	•	•	7	15444	15537	25740	21000	36036	23103	•	•	•
1	•	•	•	5 1/2	16351	•	27252	33083	38153	35700	4 1/2	21616	31666
1	•	•	•	7	17837	•	29728	33083	41619	35700	•	•	•
Source	1			2				2			2		

Sources (available upon request): 1) University of Texas, Austin, TX (using new ICBO-ES testing criteria); 1993. 2) AA Engineers & Associates, Inc., Denver, CO; 1981.

LENGTH SELECTION GUIDE



EDGE DISTANCE AND SPACING REQUIREMENTS

Embedment (E) in Anchor Diameters (d)	Spacing	Edge Distance
E < 6d (shallow)	3.50E	1.75E
6d ≤ E ≤ 8d (standard)	2.00E	1.00E
8d < E (deep)	1.50E	0.75E

NOTES:

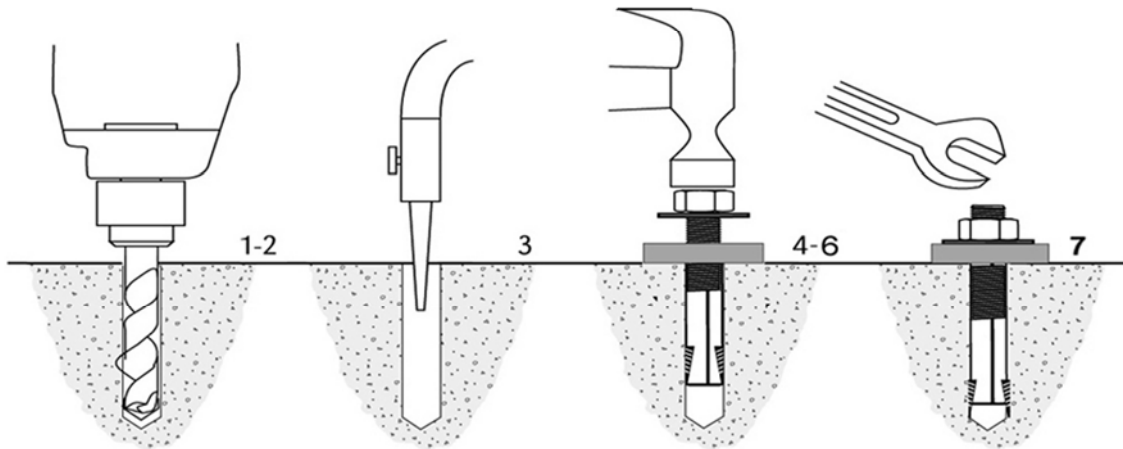
- Information provided only for the use of a qualified design engineer. Use of technical data by persons not qualified could cause serious damage, injury, or even death.
- Ultimate values shown. For static loads, use one-fourth of the maximum tensile and shear capacities for the recommended 4:1 safety factor.

INSTALLATION INSTRUCTIONS – MOHAWK LIFTS

1. Drill the hole perpendicular to the work surface.* The drill bit diameter will be the same as the anchor diameter that you are installing. To assure full holding power, do not ream the hole or allow the drill to wobble. **Ensure all holes are a minimum of 6 inches away from any cracks, seams or defects in the concrete.**
2. Drill the hole 1 diameter deeper than the intended embedment of the anchor, but not closer than two diameters to the bottom (opposite) surface of the concrete.
3. Clean the hole using compressed air and a nylon brush. A clean hole is necessary for proper performance.
4. For ease of installation, make certain that the spear heads are located up against the wedge pockets.
5. Turn the nut onto the anchor until contact is made with the top of the spears and the bottom of the washer. Insert anchor into hole.
6. Tap anchor into hole with a 2 ½ lb. hammer until the washer rests solidly against the base plate.
7. Tighten the nut from 1 ½ to 3 turns past hand tight position to estimated installation torque below. Use of an Impact wrench for Installation of the anchor is NOT recommended.

TORQUE VALUES

Anchor Diameter (in)	Drill Bit Diameter (in)	Estimated Install Torque (ft-lb)	Minimum Embedment (in)
3/4	3/4	75	3
1	1	130	5 ½



INSPECTION & MAINTENANCE INSTRUCTIONS

1. Verify torque on anchors to 70 ft-lbs for 3/4 anchors and 120 ft-lbs for 1" anchors for future/annual inspections.

* Always wear safety glasses. Follow the drill manufacturer's safety instructions. Use only solid carbide-tipped drill bits meeting ANSI B212.15 diameter standards as listed on back cover.

REV: 11/07