



# eFormation newsletter

**TCS Performance Transmission Products**

Producers and Suppliers of High Quality Products  
Tel: 604-533-8675 Toll Free: 1-800-960-1177 [www.TCSProducts.com](http://www.TCSProducts.com)

Click here to visit our website  
[www.tcsproducts.com](http://www.tcsproducts.com)

Toll Free: 1-800-960-1177

## 727 PERFORMANCE PARTS

*Manufactured In-House by TCS Products*

### 727 Full Metal Jacket Drum Kit

#### Product #K123900AS

The TCS 727 "Full Metal Jacket" Steel Sleeved Aluminum Drum Is here!! Ideal for those that use their vehicles on both the Street and Strip.

Only 5.5 lbs - 2 lbs lighter than the OEM Drum.

The Kit includes the following;

- \* One Billet Aluminum Drum with Steel Sleeve and, replaceable brass bushing.
- \* One New Billet Aluminum Clutch Piston.
- \* One TCS Steel Pressure Plate.
- \* One set of Sealing Rings.



### A518/618/727 Billet Steel Front Drum & X-Large Piston

#### Product #K123900SH

The Drum has been CNC Machined at TCS from AIAI/SAE 1040-1045 Medium-Carbon Machinery Steel - NO Cast Iron used in this one!

- \* Safer than the Cast Iron Drum and longer lasting than the Aluminum Drum - Ideal for Street Use.
- \* Will hold 5-6 friction plates versus 4 in a stock unit.
- \* 55%, YES that's 55% MORE Piston Apply Area! This results in double the clamping force needed in Third Gear - Just what you need when used in High Performance and Extreme Applications.
- \* Engineered with Dual Oil Apply Passages for even piston apply.
- \* Kit comes with a NEW Billet Aluminum Piston.



### 727 Steel Drum & Aluminum Piston

#### Product #K123900S

Made from solid Billet Steel (Carbon Steel 1040 - 1045) - Not Cast Iron or, a Forging!

- \* Kit includes a NEW Steel Pressure Plate and a NEW Aluminum Piston.
- \* Safer than Cast Iron Drum and longer lasting than the Aluminum Drum- Ideal for Street Use.
- \* Will hold up to 5 Friction Plates versus 4 in a stock unit.
- \* Engineered with Dual Apply Feed Passages.





**TCS Performance Transmission Products**

Producers and Suppliers of High Quality Products  
Tel: 604-533-8675 Toll Free: 1-800-960-1177 [www.TCSProducts.com](http://www.TCSProducts.com)

Click here to visit our website  
[www.tcsproducts.com](http://www.tcsproducts.com)

Toll Free: 1-800-960-1177

## 727 PERFORMANCE PARTS

*Manufactured In-House by TCS Products*

### **727 Billet Aluminum Direct Drum & Piston Product #K123900**

- \* The Drum is made from T6 Billet Aluminum.
- \* Kit includes a NEW steel Pressure Plate, Teflon Sealing Rings and, a NEW Aluminum Piston.
- \* Safer than OEM Cast Iron Drums.
- \* 57% LIGHTER! than the OEM drum - 3 1/4lbs versus 7.5lbs.
- \* Will hold up to 6 Friction Plates versus only 4 in a stock unit.
- \* Designed with a SERVICEABLE and REPLACEABLE Ring Sleeve & Bushing.

### **A727 Billet Aluminum Rear Drum Product #123901**

The TCS 727 Rear Drum is made in-house from T6 Billet Aluminum.

- \* 60% lighter than the stock Rear Drum - 1.45 lbs versus 3.65 lbs.
- \* A direct replacement for the stock drum.
- \* Ideal for both Street and Strip.

### **727 Weight Loss Kit Product #K727C**

The Lean & Mean Weight Reduction Combo Special

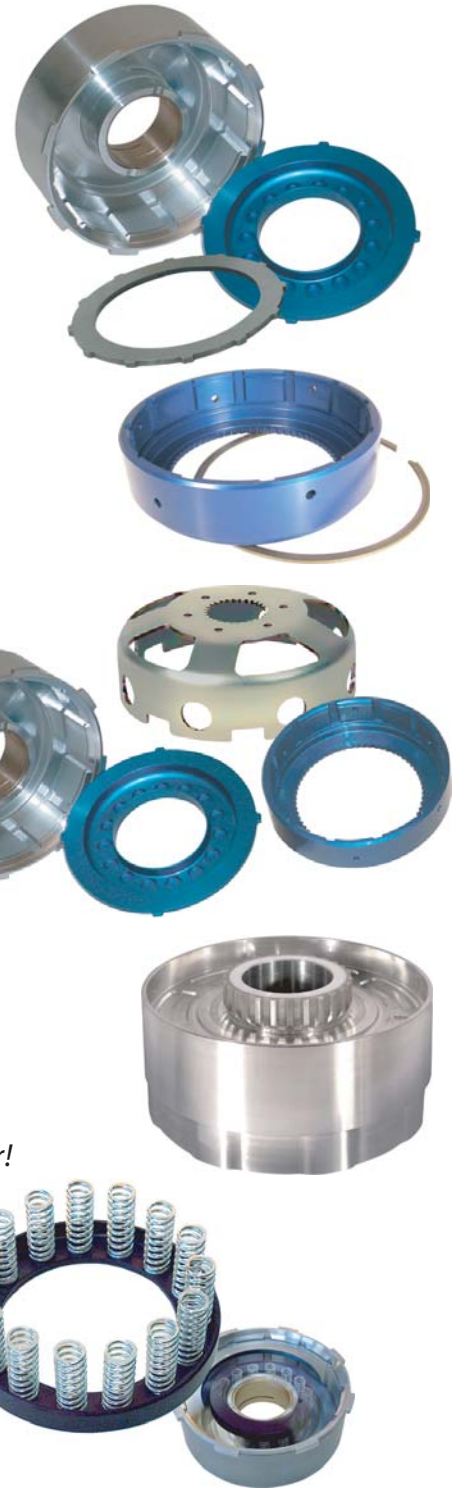
- \* Kit includes an Aluminum Front Drum with Aluminum Piston, Aluminum Rear Drum and our Ultra-Lite Sun Shell.
- \* Total weight loss using this combo over the OEM components is 7.27lbs.

### **727 Aluminum Low/Reverse Band Drum Product #123805**

- \* Made from T6 Aluminum
- \* Needle Roller Bearing Support
- \* Weighs 1.40 lbs compared to O.E.M drum weight of 4.79 lbs - 70% lighter!

### **727 Direct Drum Spring Retainer Product #123900DSR**

- \* Eliminates Snap Ring spin out.
- \* Correct tension springs for quick clutch release and shift timing.
- \* Springs available separately.





**TCS Performance Transmission Products**

Producers and Suppliers of High Quality Products  
Tel: 604-533-8675 Toll Free: 1-800-960-1177 [www.TCSProducts.com](http://www.TCSProducts.com)

Click here to visit our website  
[www.tcsproducts.com](http://www.tcsproducts.com)

Toll Free: 1-800-960-1177

## 727 PERFORMANCE PARTS

Manufactured In-House by TCS Products

### 727 Sportsman Support Kit

#### Product #K120005

TCS has modified the steel OEM cast low/reverse drum to incorporate a large bearing to reduce drag and heat generating friction.

- \* Output Support made from 4140 HTSR Steel.
- \* Radial Ball Bearing Support.
- \* Roller bearing install in a re-furbished 1st/Rev drum for friction reduction.
- \* Governor elimination sleeve.
- \* Assembly can only be used with a manual valve body.



### 727 Clutch Pack Kit

#### Product #K123900P

5 Clutch "Power Pack" for your Direct Drum.

- \* You can now HOLD YOUR POWER by installing this kit and add one more clutch plate to the 3rd Gear Drum.
- \* Also the Billet Aluminum Clutch Piston is more concentric than the O.E. Cast Piston resulting in a more positive clutch application.
- \* A more stable Piston Apply + More Friction Area = Greater Performance and Longer Durability.
- \* Raybestos Frictions and Steels are used with this kit.

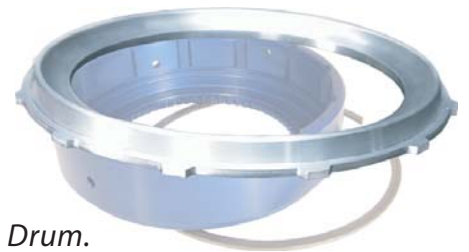


### 727 Forward Drum Aluminum Pressure Plate

#### Product #123901PP

727 Billet Aluminum Forward Drum Pressure Plate. Further reduces the rotational weight in your 727 Transmission.

- \* Made from 6061 T6 Aluminum
- \* 65% Lighter than the stock cast pressure plate .30lbs versus .85lbs.
- \* No modifications required - works with the stock drum or,our Aluminum Drum.



### 727 Aluminum Pressure Plate

#### Product #123900PA

Reduce rotational weight from your 727.

- \* Weight: 0.45 lbs.
- \* Thickness: 0.318 inches. (custom thickness available)
- \* Manufactured with extra thickness to allow your shop machinist to fit the plate according to your drum's actual requirements - # and/or type of Frictions & Steel.







**TCS Performance Transmission Products**

Producers and Suppliers of High Quality Products  
Tel: 604-533-8675 Toll Free: 1-800-960-1177 [www.TCSProducts.com](http://www.TCSProducts.com)

Click here to visit our website  
[www.tcsproducts.com](http://www.tcsproducts.com)

Toll Free: 1-800-960-1177

## 727 PERFORMANCE PARTS

*Manufactured In-House by TCS Products*

### **727 Sportsman Planetary Assembly Product #K127500A-F**



### **727 Sportsman Planetary Assembly. Low Drag Geartrain Assembly.**

- \* Largest enclosed Torrington Needle Bearings
- \* New Front Planetary Steel Top Hat - for maximum spline strength
- \* Radial Ball Bearing Support
- \* Stock Ratio 2:45/1:45
- \* Available in 3, 4 & 5 Pinion Arrangements.



When ordering, please refer to the following table for correct part#'s.

K127500A.....	3 Pinion set.....	1962-75
K127500B.....	4 Pinion set.....	1962-75
K127500C.....	5 Pinion set.....	1962-75
K127500D.....	3 Pinion set.....	1976-93
K127500E.....	4 Pinion set.....	1976-93
K127500F.....	5 Pinion set.....	1976-93

### **TF727 High Torque Input Shaft & Hub Product #129600**

- \* This shaft has been designed for those Higher Horsepower Engines, tested to 1,000 ft.lbs of torque.
- \* The Shaft is machined from select specialty steel material then heat treated for torsional strength and precision ground at all critical diameters.
- \* The Hub has been machined from 4140 HTSR steel.
- \* Shaft to Hub Splines have been increased from the O.E.M. spec of 28 to 35 - 25% more surface contact.





**TCS Performance Transmission Products**

Producers and Suppliers of High Quality Products  
Tel: 604-533-8675 Toll Free: 1-800-960-1177 [www.TCSProducts.com](http://www.TCSProducts.com)

Click here to visit our website  
[www.tcsproducts.com](http://www.tcsproducts.com)

Toll Free: 1-800-960-1177

## 727 PERFORMANCE PARTS

*Manufactured In-House by TCS Products*

### 727 Input Shaft & Aluminum Hub

#### Product #129600A

*Designed for those higher horsepower engines, this performance product has been tested to 1,000 ft/lbs of torque!*

- \* *The Shaft is machined from superior specialty steel.*
- \* *Shaft has been Heat treated for torsional strength and precision ground at all critical diameters.*
- \* *Precision machined high strength lightweight aluminum hub.*
- \* *Shaft to hub splines increased from O.E.M. 28 to 35 splines for 25% more surface contact.*
- \* *3.02 lbs - 34% lighter than the O.E.M assembly.*



### 727 4 Pinion Front Planet Assembly

#### Product #1275-1-EW

*4 Pinion Front Planet Assembly for the 727. Add STRENGTH and RELIABILITY to your 727 transmission. This is a direct replacement front planet assembly that has been manufactured with a steel spline instead of aluminum as in the OEM version. The unit uses the OEM thrust washer for easy installation. When ordering, due to spline differences, you MUST specify the production date of your transmission.*

- \* *1962-1975 - Early*
- \* *1976-1993 - Mid*
- \* *1994- On - Late*



### 727 Ultra-Light Sun Shell

#### Product #121450

- \* *For the serious enthusiast looking to reduce every possible ounce of weight from the transmission.*
- \* *2.73 lbs versus the 3.75 lb stock unit. A full 1 lb of weight reduction!*
- \* *Gold Dichromate Plated.*



### 727 Max Lug Pump Gear Set

#### Product #123404

- \* *This re-designed Gear Set has possibly the largest and, strongest pump drive lugs in the industry.*
- \* *With 45% more contact it will greatly reduce the possibility of pump failure.*





**TCS Performance Transmission Products**

Producers and Suppliers of High Quality Products  
Tel: 604-533-8675 Toll Free: 1-800-960-1177 [www.TCSProducts.com](http://www.TCSProducts.com)

Click here to visit our website  
[www.tcsproducts.com](http://www.tcsproducts.com)  
Toll Free: 1-800-960-1177

## 727 PERFORMANCE PARTS

*Manufactured In-House by TCS Products*

### **727 4.2 Ratio Band Lever**

#### **Product #146900**

- \* *The 4.2 Ratio Band Lever provides greater mechanical clamping force than the OEM 3.8 Ratio Lever.*
- \* *CNC Machined from 4140 Heat Treated HTSR steel for added Strength.*



### **Heavy Duty Billet Steel Band Anchor**

#### **Product #22718HD**

*Repalce that worn out O.E.M. Band Anchor with the TCS Products billet steel Anchor - for heavy duty and high performance applications.*

### **Heavy Duty Band Strut**

#### **Product #22717HD**

*TCS has a solution for Chrysler Automatic transmissions that tend to be prone to Band Strut failure. The OEM Band Struts, manufactured from steel by stamping are notorious for bending causing excessive Band clearances that can potentially contribute to premature transmission failure.*

- \* *The TCS Heavy Duty Band Strut is made from Case Hardened 1018 Carbon Steel to provide a more durable product.*
- \* *The Band is 100% Thicker (240 thou. versus 120 thou.) than the OEM product.*



### **727 Billet Aluminum Accumulator Piston**

#### **Product #123002**

*Billet aluminum Dual Ring "Zero Leakage" Accumulator Piston.*

### **727 Dual Ring Kick-Down Servo Assembly**

#### **Product #123001**

- \* *Billet Aluminum.*
- \* *Zero Leakage 2nd Gear apply.*
- \* *Longer band life and 3rd Gear Clutch Life!*



### **727 Low/Reverse Billet Aluminum Piston**

#### **Product #123003**

- \* *Made from T6 Aluminum.*
- \* *Eliminates cracking failures common in the O.E.M unit when Trans Brake is applied.*
- \* *Eliminates Spring and messy shims.*







# eFormation newsletter

**TCS Performance Transmission Products**

Producers and Suppliers of High Quality Products  
Tel: 604-533-8675 Toll Free: 1-800-960-1177 [www.TCSProducts.com](http://www.TCSProducts.com)

Click here to visit our website  
[www.tcsproducts.com](http://www.tcsproducts.com)  
Toll Free: 1-800-960-1177

## 727 PERFORMANCE PARTS

Manufactured In-House by TCS Products

### 727 Bottom Feeder Kit

#### Product #128001A

The TCS Performance Products In-House R&D Racing Team has designed, tested and released for sale the TF727 "Bottom Feeder" Kit. This kit lowers and rotates the stock filter position to the rear of the TF 727 Transmission pan providing increased fluid pick-up during hard acceleration.

The Kit Includes;

- \* 1 - Deep 4 Quart cast aluminium finned pan.
- \* 1- Billet aluminium filter adapter.
- \* 1- Custom Filter.
- \* 1 - Pan Gasket.
- \* 1- Drain Plug.

All necessary mounting hardware and, detailed installation instruction.

Note: If you already have an aftermarket Deep Pan, the Bottom Feeder Adapter can be purchased separtely - See Part #K123902R.



### 727 Bottom Feeder Adapter

#### Product #K123902R

TF727 Bottom Feeder Adapter. For those with a Deep Pan, this kit re-positions the filter (Lowers and rotates it to the rear) so that you'll never "run dry" during those hard accelerations.

The Kit Includes;

- \* 1 - Billet Aluminum Filter Adapter.
- \* 1 - Custom Filter.
- \* 1 - Pan Gasket.
- \* All necessary mounting hardware and, detailed installation instructions.



### 727 Bolt In Sprag Kit

#### Product #127000



### Custom High Stall Converters

- \* 8 inch and 9 inch High Stall Converters come with a TSC Billet Steel Front Cover.

