

CHARCON

HARD LANDSCAPING

BRITISH STANDARD KERB AND EDGING

TECHNICAL INFORMATION
www.aggregate.com/britishstandardkerb

BRITISH STANDARD KERB AND EDGING

KERBS AND EDGING



A RANGE OF KERBS,
CHANNELS AND EDGING AS
SPECIFIED IN THE CURRENT
VERSION OF BS EN 1340.

Designed to provide edge restraint in
pedestrian and vehicular applications.

Complies with British Standards.

Range of accessories to suit a variety
of applications.

APPLICATIONS

British Standard kerb is a cost effective
kerb for all applications.

MANUFACTURING STANDARD

British Standard kerb is manufactured using
a wet pressed process and is manufactured
in accordance with and complies with all
relevant sections of BS EN 1340: Concrete
Kerb Units – requirements and test
methods.

Charcon Hard Landscaping fully operates
an accredited Quality Assurance scheme,
certified to BS EN 9001:2008 which is
independently and regularly assessed by
BSI (British Standards Institution). All
Charcon manufacturing sites are also
certified to BS EN 14001 Environmental
Management Systems.



PERFORMANCE WITH SLIP RESISTANCE

Unpolished slip resistance values, when tested
in accordance with BS EN 1340, are available
on request. All Charcon kerb units are
classified as having a low potential for slip.

Polished slip resistance values can be
provided on request.

COMPLEMENTARY PRODUCTS

Designed for use with Charcon flag and
block paving ranges.

COLOUR SWATCH



1. Grey

A full range of accessories are available. Please refer to page 108 in the Charcon portfolio for further details.
† Represents non-primary material within the complete mix design.



OHS 61759



FM 96927



EMS 96928



Q25.

For NBS clauses, refer to Aggregate
Industries technical services.

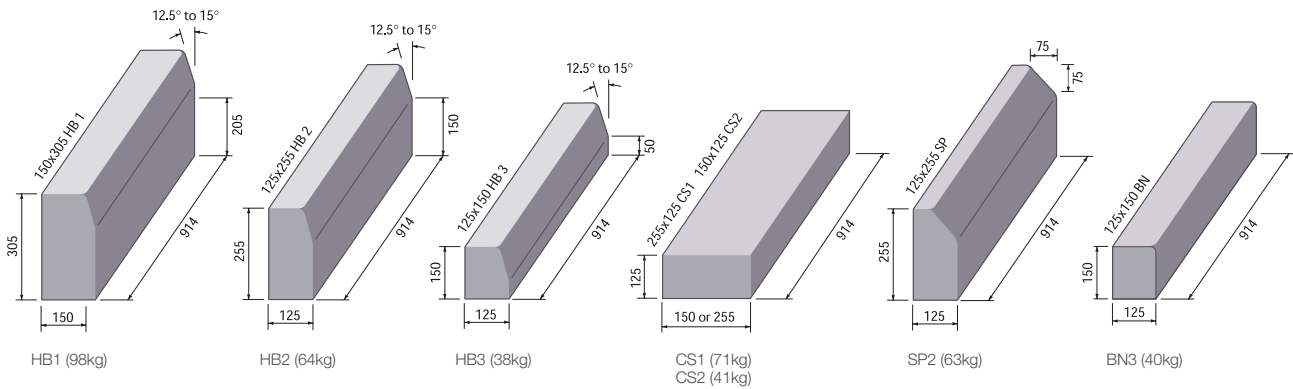
BRITISH STANDARD KERB AND EDGING

KERBS AND EDGING PRODUCT INFORMATION

BRITISH STANDARD KERB PRODUCT DATA												
Type	HB1	HB2	HB2	HB3	BN1	BN2	BN2	BN3	BN3	SP2	SP2	SP3
Length (mm)	914	914	609	914	914	914	609	914	609	914	609	914
Height (mm)	305	255	255	150	305	255	255	150	150	255	255	150
Width (mm)	150	125	125	125	150	125	125	125	125	125	125	125
Weight (kg)	100	70	46	40	100	70	46	40	30	60	40	30
Units/m (approx)	1.09	1.09	1.64	1.09	1.09	1.09	1.64	1.09	1.64	1.09	1.64	1.09
No. per pack	14	18	18	18	14	18	18	18	24	18	18	24
M/pack (approx)	12.84	16.51	10.98	16.91	12.84	16.51	10.98	16.91	14.63	16.51	10.98	21.9
Pack weight (T)	1.4	1.26	0.72	0.72	1.4	1.26	0.72	0.72	0.72	1.26	0.72	0.72
Colours	Grey	Grey	Grey	Grey	Grey	Grey	Grey	Grey	Grey	Grey	Grey	Grey

HB - Half batter / BN - Bullnose / SP - Splay.

BRITISH STANDARD EDGING PRODUCT DATA									
Type	Flat top	Flat top	Flat top	Bullnose	Bullnose	Bullnose	Round top	Round top	Round top
Length (mm)	914	914	914	914	914	914	914	914	914
Height (mm)	150	200	255	150	200	255	150	205	225
Width (mm)	50	50	50	50	50	50	50	50	75
Weight (kg)	15	20	30	15	20	30	15	20	40
Units/m (approx)	1.09	1.09	1.09	1.09	1.09	1.09	1.09	1.09	1.09
No. per pack	40	20/40	20	40	20/40	20	60	20	12
M/pack (approx)	36.56	18.28/35.56	18.28	36.56	18.28/35.56	18.28	55.05	18.28	11.01
Pack weight (T)	0.62	0.45/0.90	0.55	0.62	0.45/0.90	0.55	0.90	0.45	0.45
Colours	Grey	Grey	Grey	Grey	Grey	Grey	Grey	Grey	Grey



Nominal weights of units shown in brackets.

BRITISH STANDARD KERB AND EDGING

KERBS AND EDGING PRODUCT INFORMATION

DROPPERS AND CROSSING KERB

125x255mm HB – 125x150mm BN (LH) DL1

125x255mm HB – 125x150mm BN (RH) DR1

125x255mm SP – 125x150mm BN (LH) DL2

125x255mm SP – 125x150mm BN (RH) DR2

125x150mm BN as Crossing kerb

125x255mm BN – 125x150 BN (LH) non BS

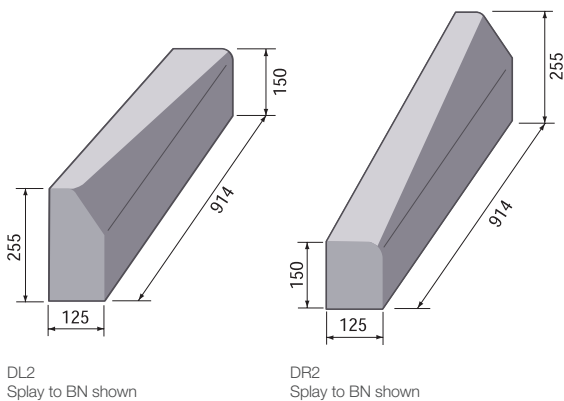
125x255mm BN – 125x150 BN (RH) non BS

RADIUS DROPPERS BS EN 1340

125x255mm HB – 125x150mm BN (LH)

125x255mm HB – 125x150mm BN (RH)

Available in 4, 6, 8 and 10m.



RADIUS KERBS AND CHANNELS

BS EN 1340

The table shown is an approximate guide only.

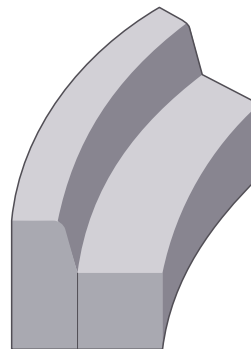
All radii over 15m (40 ft) can be achieved by using standard 914mm (3 ft) or 609mm (2 ft) kerbs.

Before ordering, check availability of size and profile.

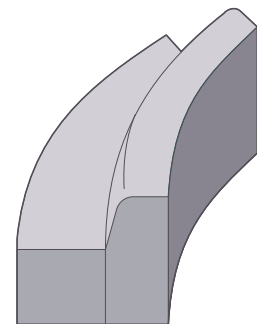
Also when ordering, please state the dimensions first, then the profile, then the radii followed by internal or external, eg 125x150 BN 4m ext.

Approx No. Units per 1/4 circle

Size of radius (m)	Units per 1/4 circle
0.5	1
1	2
2	4
3	6
4	8
5	10
6	12
8	16
10	20
15	30



Internal kerb external channel



External kerb internal channel

BRITISH STANDARD KERB AND EDGING

KERBS AND EDGING PRODUCT INFORMATION

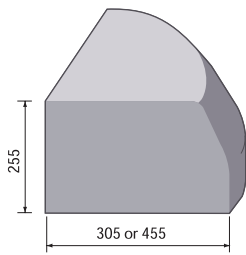
QUADRANTS BS EN 1340

305x255mm QHB

455x255mm QHB

305x255mm QBN

HB305 (42kg), HB455 (90kg)



QHB

HB305 (42kg), HB455 (90kg)

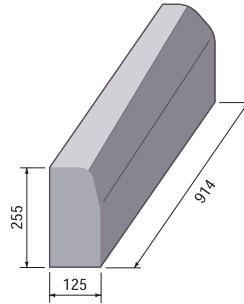
TRANSITION KERBS BS EN 1340

125x255mm HB RH – 125x255mm SP LH TR1

125x255mm HB LH – 125x255mm SP RH TL1

125x255mm HB RH - 125x255mm BN LH TR2

125x255mm HB LH - 125x255mm BN RH TL2



60kg (125x255mm HB LH – 125x255mm SP RH shown)

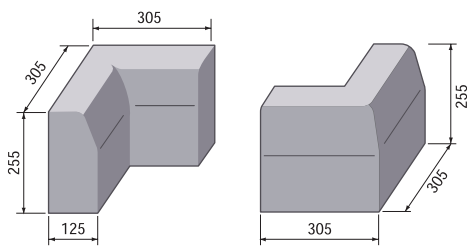
ANGLES BS EN 1340

125x255mm HB ext angle HBXA

125x255mm HB int angle HBIA

125x255mm BN ext angle BNXA

125x255mm BN int angle BNIA



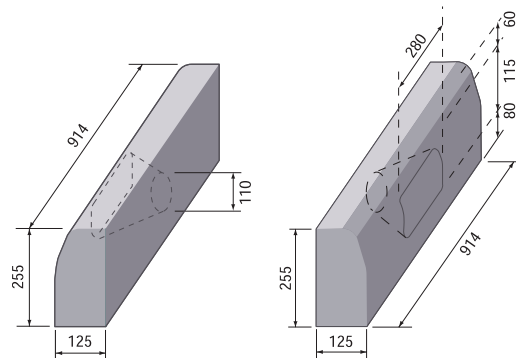
HBIA (33kg)

HBXA (33kg)

OFFLET (WEIR KERBS) HALF BATTERED ONLY

Designed to allow surface water to be discharged through the opening in the face of the kerb to a 100mm pipe.

Offlet or Weir Kerb - half battered only.



(56kg)

(56kg)



BRITISH STANDARD KERB AND EDGING

KERBS AND EDGING PRODUCT INFORMATION

NON-STANDARD KERBS AND CHANNELS

Subject to availability and minimum order quantity.

CHANNELS

150x150mm CS

NON-STANDARD DROPPERS AND CROSSING KERB

125x255mm HB – 125x175 SP*(LH) DL.

125x255mm HB – 125x175 SP*(RH) DR.

125x175mm SP* as Crossing kerb.

DOUBLE PATTERN

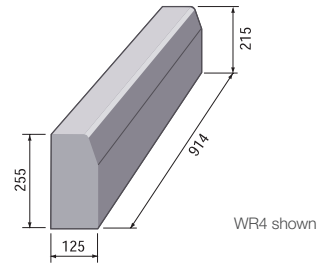
125x255mm HB – 125x215 WRCC (LH)
Order Code WR1.

125x215mm HB – 125x175 WRCC (LH)
Order Code WR2.

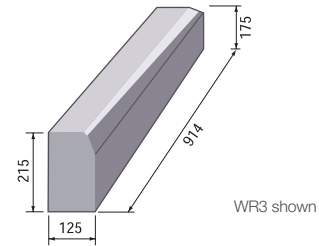
125x215mm HB – 125x175 WRCC (RH)
Order Code WR3.

125x255mm HB – 125x215 WRCC (RH)
Order Code WR4.

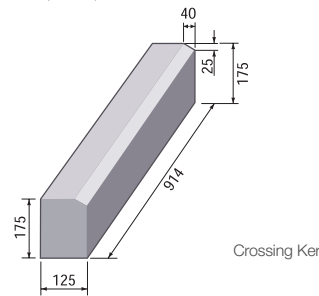
*NB 25 mm splay.



WR4 shown

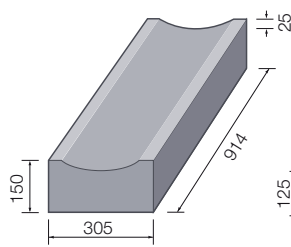


WR3 shown

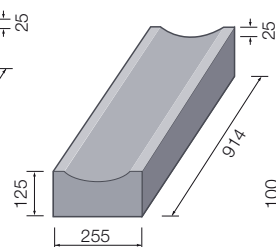


Crossing Kerb

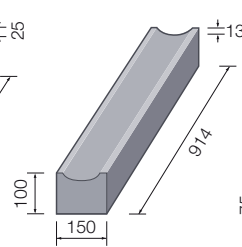
DISH CHANNELS, FLUTED CHANNEL & MOTORWAY CHANNEL



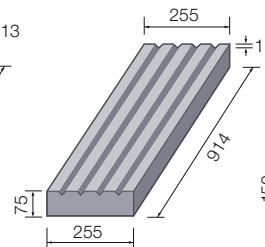
305 x 150 CD Dish Channel
6 x 12 Dish Channel.



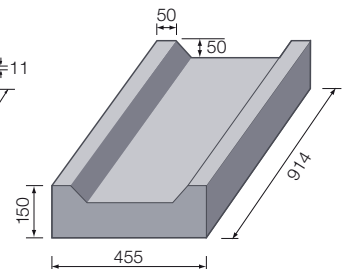
225 x 125 CD Dish Channel
5 x 10 Dish Channel
CD1.



150 x 100 CD Dish Channel
6 x 4 Dish Channel
CD2.



255 x 75 x FLCH
Fluted Channel.



Motorway Channel
Manufactured to order only.

BRITISH STANDARD KERB AND EDGING

KERBS AND EDGING PRODUCT INFORMATION

SUSTAINABILITY AND LOCAL SOURCING

ENERGY USE: Aggregate Industries is at the forefront of sustainability and has committed to reduce carbon emissions by 20% by 2016 based on a 2012 base line.

RECYCLABLE: 100% of the product can be recycled thus reducing the amount of material that is sent to landfill.

MANUFACTURING LOCATION:

Produced in the UK, with locally sourced materials under strict environmental and social legislation, for local supply.

RESPONSIBLE SOURCING: Aggregate Industries is the first company in the world to achieve accreditation to the BES 6001 Framework Standard for the Responsible Sourcing of Construction Products.

Aggregate Industries has achieved a 'Very Good' rating for major product groups. The BES 6001 standard assesses:

Quality management.

Environmental management.

Health and safety management.

Greenhouse gas emissions.

Minimising raw material usage.

Labour practice.

Biodiversity.

Community engagement.

KEY AGGREGATE AND RECYCLED CONTENT

British Standard kerb is manufactured using high quality, hard wearing locally sourced aggregates.

GENERIC GREEN GUIDE RATING*

Not applicable.

POLICIES

Aggregate Industries' policies on the environment and community, health and safety and sustainable solutions for different product applications can be viewed on our website www.aggregate.com

DESIGN AND INSTALLATION

For successful installation refer to BS 7533 Part 6. For specific design, installation and maintenance guidance, please contact our technical department on 01335 372222.

MAINTENANCE AND CLEANING

Aggregate Industries can supply on request advice on specific stain removal and general maintenance, suitable cleaning products and referrals to specialist cleaning companies.

COSHH DATA

Full COSHH data on the Charcon range of products is available on request. Please call the technical helpline on 01335 372222.

TECHNICAL SUPPORT

DETAILED GUIDANCE AND ASSISTANCE WITH THE PREPARATION OF SPECIFICATION OF THE CHARCON RANGE OF HARD LANDSCAPING PRODUCTS, INCLUDING MODEL CLAUSES, IS AVAILABLE THROUGH THE SALES OFFICE. A FREE TECHNICAL DESIGN SERVICE IS ALSO AVAILABLE.

FOR FURTHER INFORMATION, PLEASE REFER TO OUR TECHNICAL SERVICES ON 01335 372222.

*Ratings based upon generic green guide values (2009) supplied by BRE Global Ltd, www.thegreenguide.co.uk

The information contained within this publication was accurate at time of production. However, Aggregate Industries reserves the right to introduce modifications or changes to detail at any time without notice. No charge is levied for this publication or advice therein, and accordingly the company, its employees and authorised agents can accept no liability whatsoever, either indirectly or directly arising from the use of its products.

Charcon

Aggregate Industries, Hulland Ward,
Ashbourne, Derbyshire DE6 3ET

Tel: +44 (0)1335 372 222

Fax: +44 (0)1335 370 074

Email: landscaping@aggregate.com

www.aggregate.com

