



# Welcome to Port Wallhamn



# History



**15th November  
1962**

Port of Wallhamn was founded by Olof Wallenius, Bengt W. Törnqvist and Lars Johansson.

**June 1971**

PDI-plant started operations.

**September 1992**

The operation that is called Carbuilders today was started.

**15th August 2005**

Grimaldi Group and EUKOR new owners.

**28th January 1965**

M/S Bess – First ship to call Wallhamn.

**January 1982**

Johansson-group went bankrupt. Municipality of Tjörn new owners.

**October 2004**

Wallhamn starts PDS and signs contract dealership Svenska Bil.

**June 2009**

Grimaldi Group becomes sole owner.

# Owner structure



GRIMALDI GROUP

**Grimaldi Compagnia  
di Navigazione SpA**

**Grimaldi Maritime  
Agencies Sweden AB**

75%

25%



**Wallhamn AB**

# Grimaldi Group



## GRIMALDI GROUP

### Shipping

**Grimaldi Compagnia di Navigazione**, Italy  
**Atlantica di Navigazione**, Italy  
**Inarme**, Italy  
**ACL**, Sweden  
**MMS**, Malta  
**Minoan Lines**, Greece  
**Grimaldi & Suardiaz Lines**, Italy  
**Finnlines**, Finland  
    **HansaLink**  
    **NordöLink**  
    **FinnLink**  
    **Trans Russia Express**

### Terminals

**Wallhamn**, Wallhamn, Sweden  
**Alexandria Terminal**, Alexandria, Egypt  
**SAL**, Esbjerg, Denmark  
**EMIL**, Cork, Ireland  
**VTE**, Valencia, Spain  
**PET**, Palermo, Italy  
**PTML**, Lagos, Nigeria  
**Dakar Terminal**, Dakar, Senegal  
**Unikai (49%)**, Hamburg, Germany  
**Finnsteve**, Helsinki / Turku / Kotka, Finland  
**SAT**, Salerno, Italy  
**CETAL**, Monfalcone, Italy  
**CTE**, Civitavecchia, Italy  
**AET**, Antwerp, Belgium  
**SOCOMAR**, Douala, Cameroon  
**RORO Terminal Benin**, Cotonou, Benin

### Logistics

**Automar (20%)**, Italy  
**EMIL**, Ireland  
**SAL**, Denmark  
**ACL**, Usa

# Grimaldi Group facts



|                       |   |
|-----------------------|---|
| <b>Ships</b>          | 120 operated (106 owned)  |
| <b>Terminals</b>      | 16 terminals in Europe and Africa   |
| <b>Turnover</b>       | \$3,8 billion (2014)  |
| <b>Employees</b>      | approx. 10 000  |
| <b>Volumes (2014)</b> | 2.9 million cars<br>1.9 million Trailers/containers (FEU)<br>2.5 million passengers |
| <b>Port calls</b>     | 8 000 worldwide per year<br>112 port served worldwide<br>46 countries, 4 continents |
| <b>Owners</b>         | Wholly owned by the Grimaldi family.  |



GRIMALDI GROUP

# Wallhamn AB



## Wallhamn AB's position among Swedish ports

- 11<sup>th</sup> largest port company of Association Ports of Sweden's 52 members. (Source: Transport idag)
- Sweden's 3<sup>rd</sup> largest vehicles port of 5.
- The largest private employer in the municipality of Tjörn.
- Sweden's only private-owned commercial public port.
- Specialized RoRo-port.
- Important transit port for Russia and the Baltic states.
- The ports shipping customers calls about 200 ports on all continents.
- The goods value handled in the port is about 25 billion SEK
- The port geographical position gives an environmental advantage.

# Wallhamn AB facts



|                                  |  |
|----------------------------------|--|
| <b>Areas</b>                     | 490 000 m <sup>2</sup>   |
| <b>Quays</b>                     | 5 quays, 763 m   |
| <b>RoRo ramps</b>                | 2 RoRo ramps   |
| <b>Warehouses</b>                | 3 warehouses, 8 000 m <sup>2</sup>   |
| <b>Workshops</b>                 | 4 workshops, 6 900 m <sup>2</sup>  |
| <b>Turnover</b>                  | TSEK 238 319(2015)   |
| <b>EBT</b>                       | TSEK 12 406 (2015)   |
| <b>Employees</b>                 | 135 permanent<br>100 temporary   |
| <b>Volumes port<br/>2015</b>     | 155 port calls<br>79 085 motor vehicles<br>8 575 Containers, TEU<br>382 000 tonnes |
| <b>Volumes car dept<br/>2015</b> | 49 472 PDI/PDS cars<br>963 CarBuilder cars   |

# Wallhamn AB's branches



## **Port**

Car handling, Ro/Ro, Container Handling, Container repairs and Warehousing.

## **Pre Delivery Inspection (PDI)**

General PDI/PDS, Striping, Anti-corrosive treatment, De-waxing, Washing, Paint and Body shop.

## **PDS Dealer service**

Delivery service, Accessories.

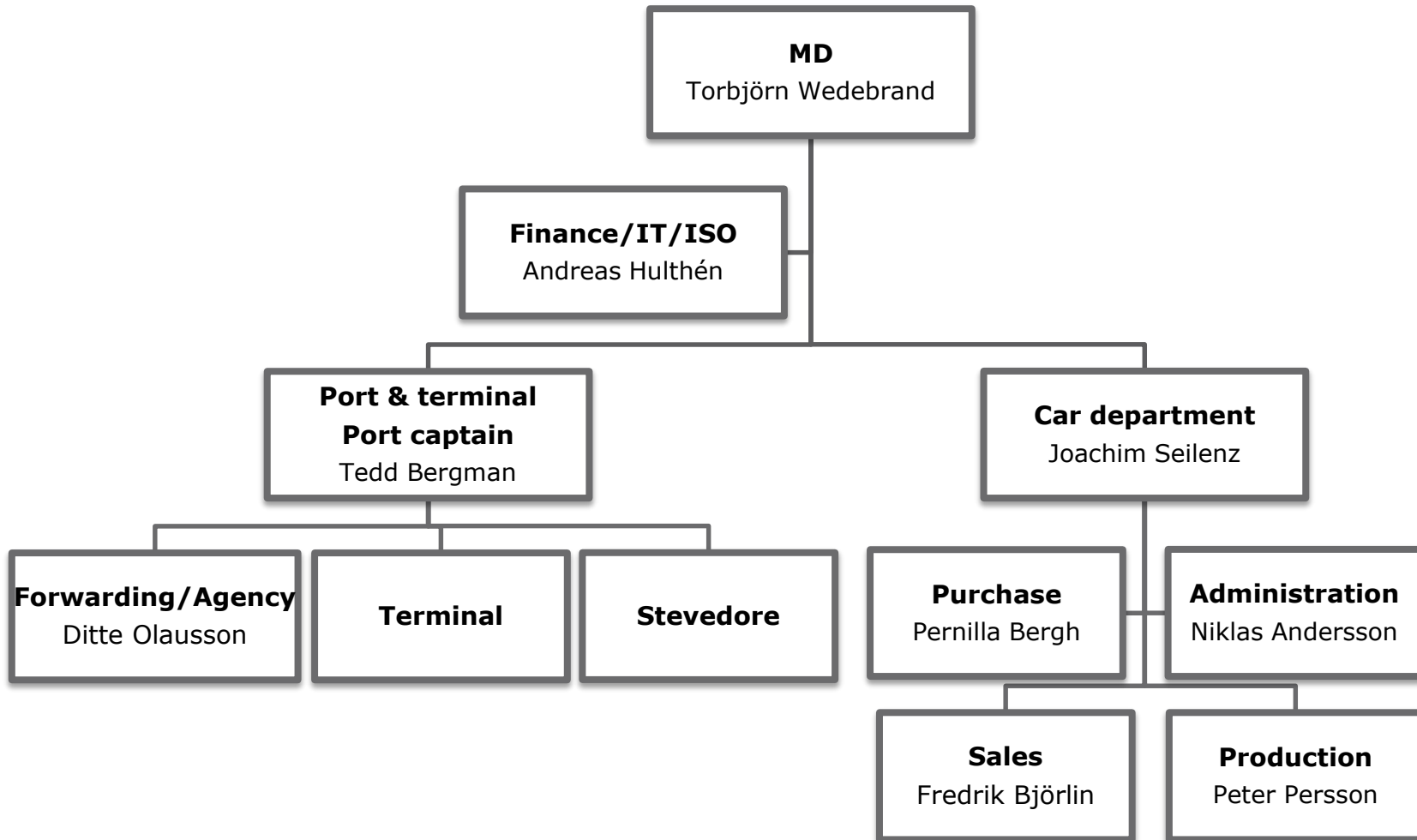
## **CarBuilders (Bilbyggarna)**

Sweden's foremost upfitter. Makes custom made solutions for professional end-users on all brands of commercial vehicles.





# Organisation



# Location

**Located by the Swedish West Coast**

**Lat 58° 01', Long 11° 42'**

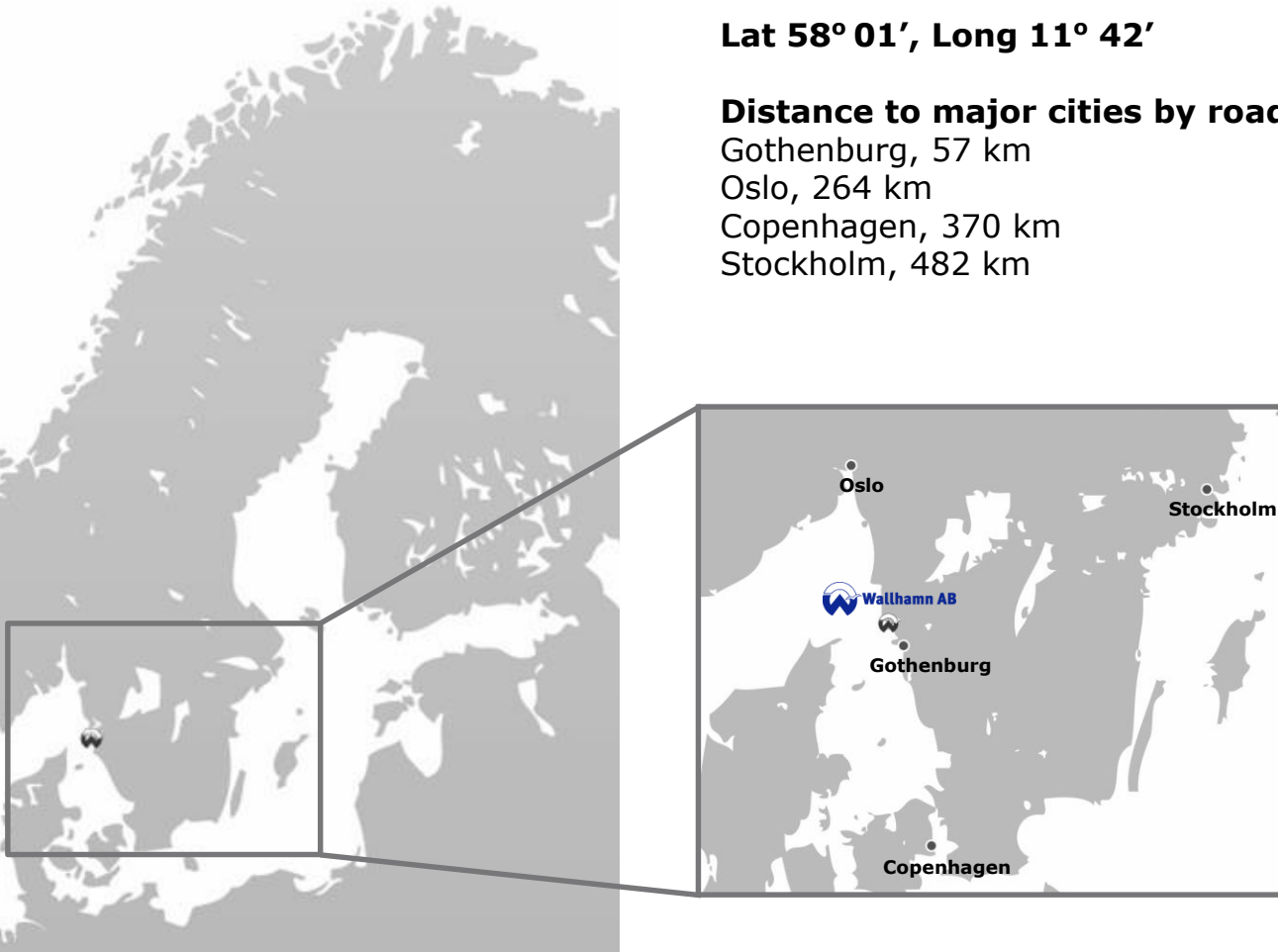
**Distance to major cities by road**

Gothenburg, 57 km

Oslo, 264 km

Copenhagen, 370 km

Stockholm, 482 km



# Port Wallhamn



## Port Wallhamn

- ISPS port
- Customs free zone
- Indoor storage close to berths
- 24 hours service
- 15 nautical miles from pilot station to berth
- Port Security, guarded and fenced area
- Great expansion possibilities

## Shipping lines

- Grimaldi
- EUKOR
- UECC
- Finlines
- Cementa



# Port facts



| Quay | Length | RoRo ramp |
|------|--------|-----------|
| 2    | 220 m  | -         |
| 3    | 80 m   | 40 m      |
| 4    | 169 m  | -         |
| 5    | 239 m  | 22 m      |
| 6    | 55 m   | -         |

## Position

- Lat 58° 01', Long 11° 42'

## Entrance

- Distance from pilot station to berth: 15 nautical miles.
- Minimum width of entrance channel: 140 m.
- Maximum draught permitted: 9,5 m.

## Pilots

- Compulsory for vessels with a length above 90 m or a wide above 16 m.
- Pilot to be taken at the Marstrand Pilot station.

## Tide variation

- Nil.

## Towage

- Tugs of all sizes available.

## Bunkers

- Full range of marine lubricants, delivered by Bunker boat or Truck.

## Stevedore

- Stevedoring 24 hours service, 365 days per year.

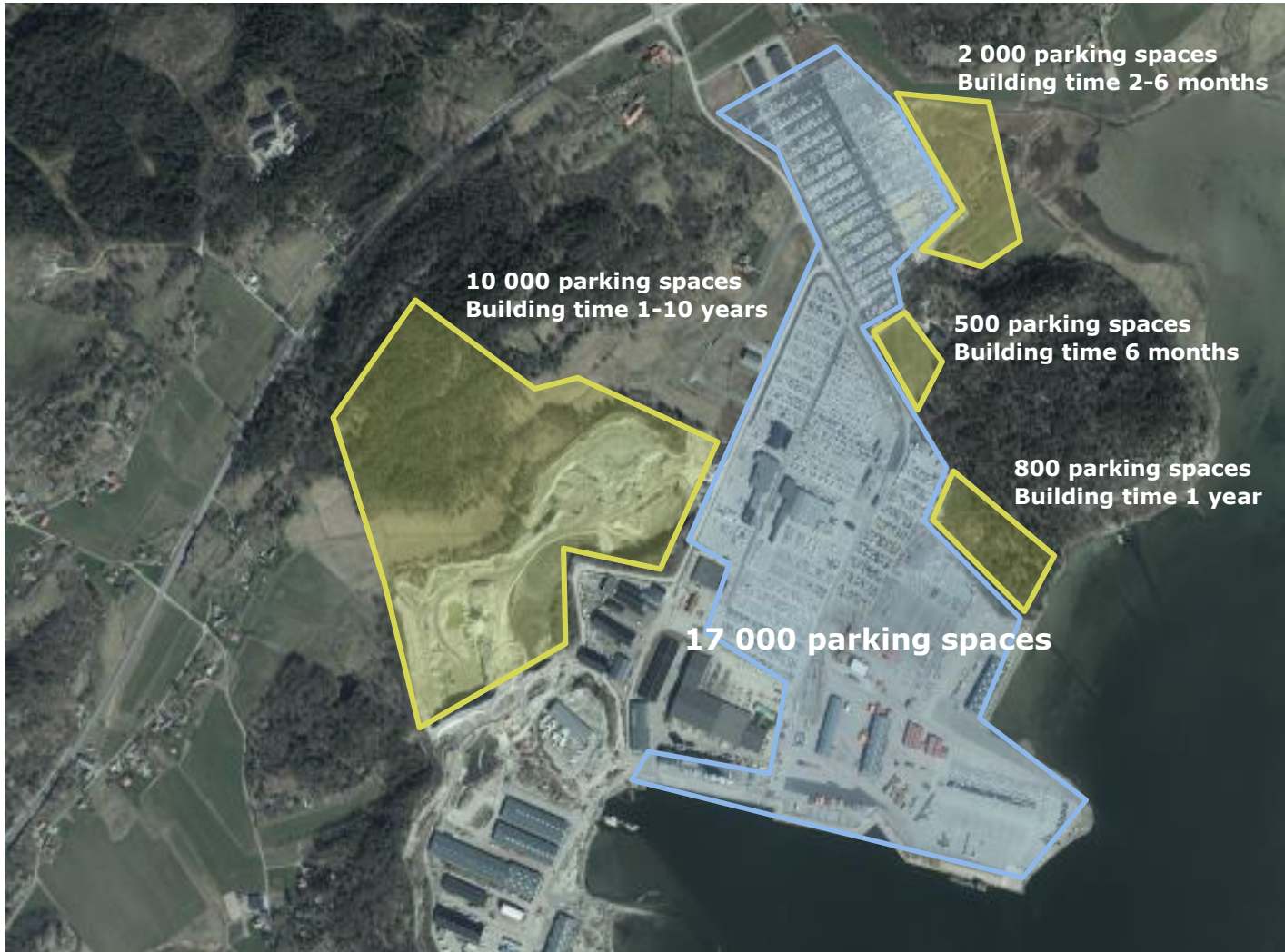
## Equipment

- 15 forklift trucks 3,5-45 ton.
- 4 tugmasters.

## Terminal

- 3 warehouses, 8 000 m<sup>2</sup>.
- Approx. 200 000 m<sup>2</sup> used flexible for TEU's and RoRo.
- Approx. 250 000 m<sup>2</sup> used for car handling. (Parking lot)

# Parking spaces





# EUKOR destinations

## Direct port calls

Bremerhaven  
Antwerp  
Le Havre  
Southampton  
Barcelona  
Livorno  
Djibouti  
Singapore  
Hong Kong  
Xinsha  
Keelung  
Shanghai  
Xingang  
Toyohashi  
Chiba  
Yokohama  
Pyungtaek  
Masan

## Transshipment via Bremerhaven or Antwerp

Aqaba  
Jeddah  
P.S. Qaboos  
Dubai / Jebel Ali  
Abu Dhabi  
Doha  
Bahrain  
Dammam  
Kuwait  
Bandar Abbas  
Dar es Salaam  
Tamatave  
Mombasa  
Mumbai  
Chennai

## Transshipment via Singapore

Port Kelang  
Bangkok  
Laem Chabang  
Jakarta  
Surabaya  
Muara Port  
Batangas  
CaiLan  
Bintulu  
Calcutta  
Yangong  
Haiphong  
Ho Chi Minh City  
Kota Kinabalu

## Transshipment via Jeddah

Massawa  
Port Sudan  
Hodeidah

## Transshipment via Yokohama

Guam





# EUKOR destinations

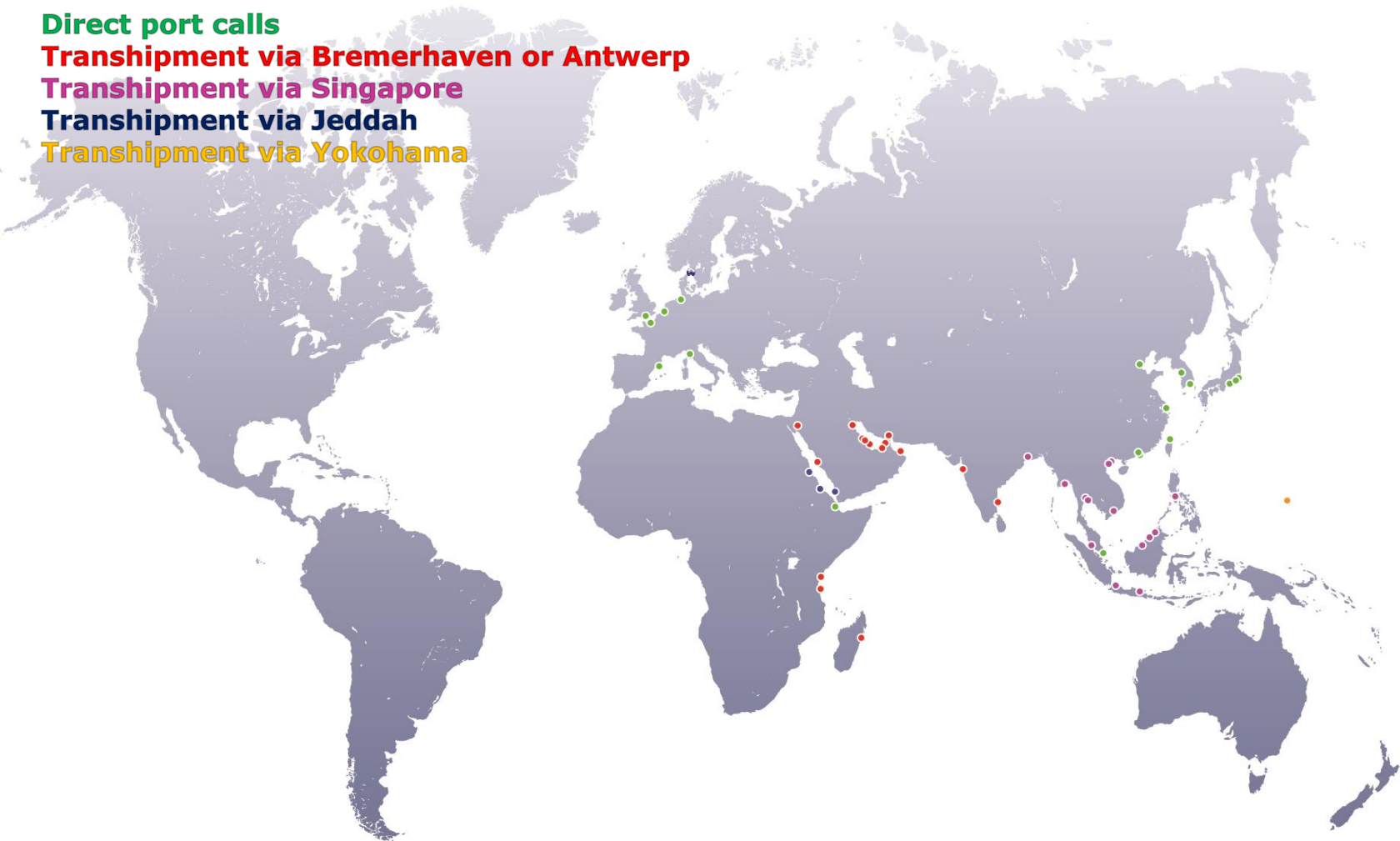
Direct port calls

Transshipment via Bremerhaven or Antwerp

Transshipment via Singapore

Transshipment via Jeddah

Transshipment via Yokohama



# Grimaldi destinations

## Mediterranean & European Service

Wallhamn  
Esbjerg  
Antwerp  
Southampton  
Cork  
Setubal  
Valencia  
Savona  
Livorno  
Civitavecchia  
Salerno  
Palermo  
Catania  
Cagliari  
Valletta  
Tunis  
Al  
Khoms/Tripoli  
Piraeus  
Izmir  
Gemlik  
Limassol  
Alexandria  
Ashdod  
Lattakia  
Tartous  
Mersin  
Beirut

Monfalcone  
Ravenna  
Koper

## South American Service

Vitoria  
Santos  
Rio de Janeiro  
Paranagua  
Montevideo  
Buenos Aires  
Zarate  
Asuncion

## West African Service

Casablanca  
Dakar  
Banjul  
Conakry  
Freetown  
Monrovia  
Abidjan  
Tema  
Takoradi  
Lome  
Cotonou  
Lagos  
Douala  
Pointe Noire  
Boma  
Luanda  
Lobito

## ACL

Gothenburg  
Hamburg  
Antwerp  
Liverpool  
Halifax  
New York  
Baltimore  
Portsmouth

## Finnlines

Helsinki  
Malmö  
Aarhus  
Halmstad  
Wallhamn





# Grimaldi destinations

**Mediterranean & European Service**

**South American Service**

**West African Service**

**ACL**

**Finnlines**



# UECC destinations

## UECC destinations

**St Petersburg**

**Ust-Luga**

**Kotka**

**Hanko**

**Gdynia**

**Malmö**

**Wallhamn**

**Bremerhaven**

**Zeebrugge**

**Southampton**



# WWL destinations

Transshipment via Bremerhaven

Zeebrugge

Le Havre

Southampton

Port Elisabeth

East London

Durban

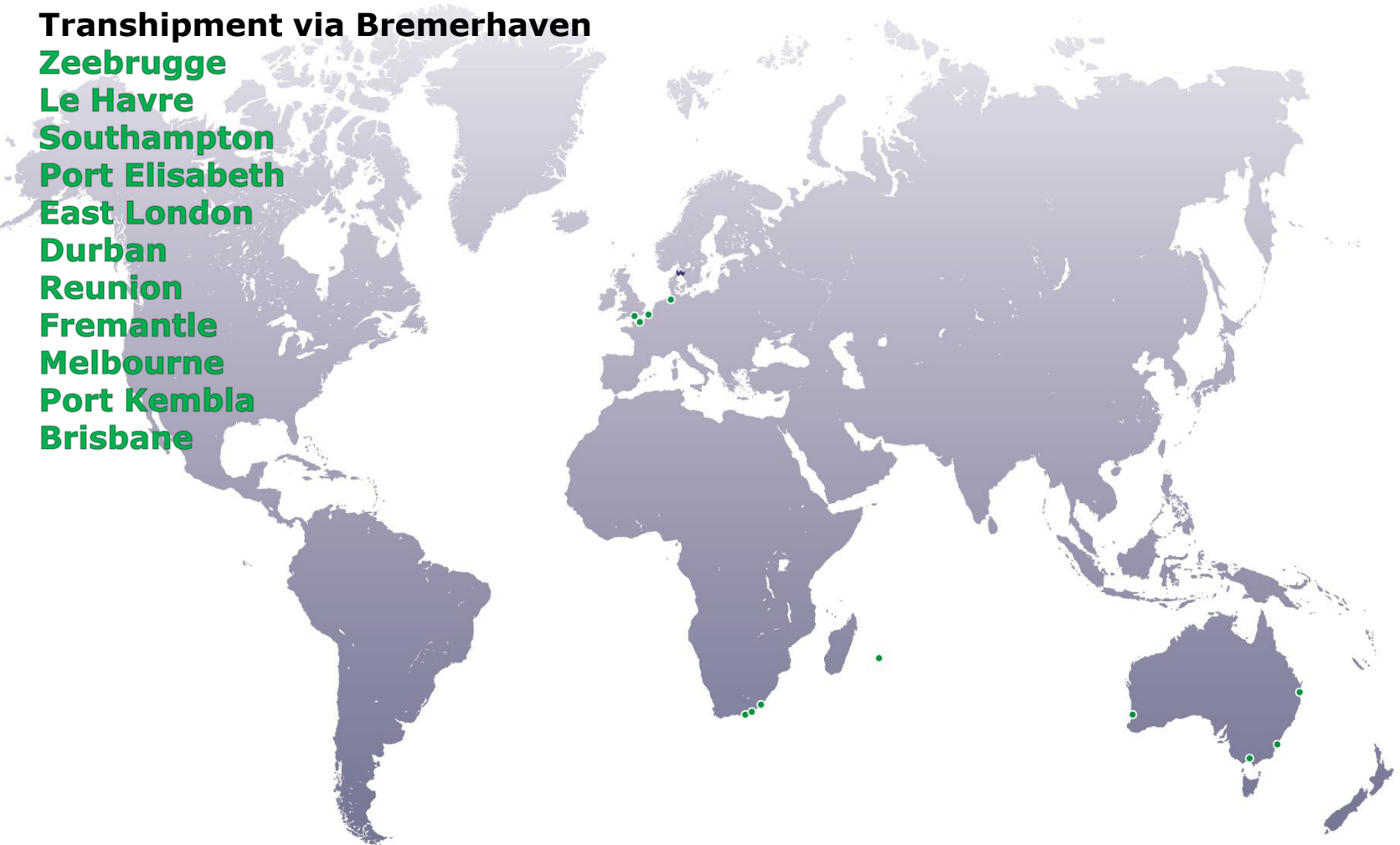
Reunion

Fremantle

Melbourne

Port Kembla

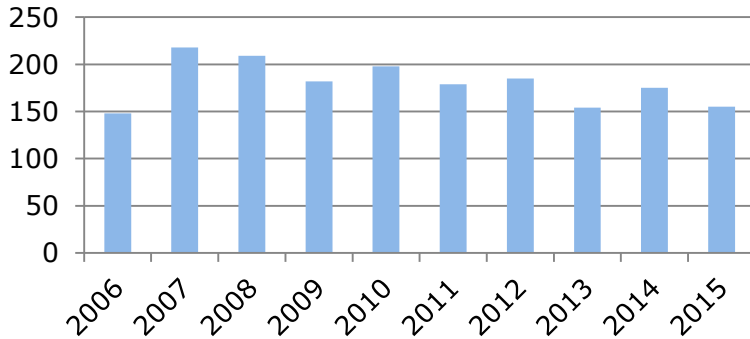
Brisbane



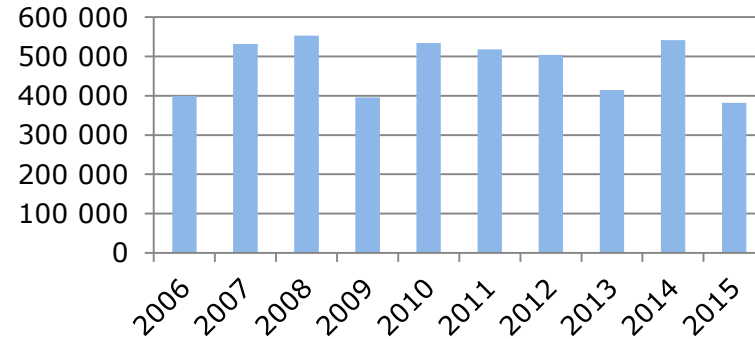


# Port Statistics

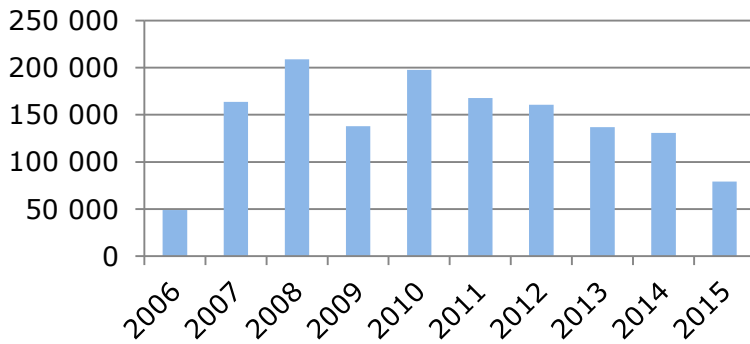
## Port Calls



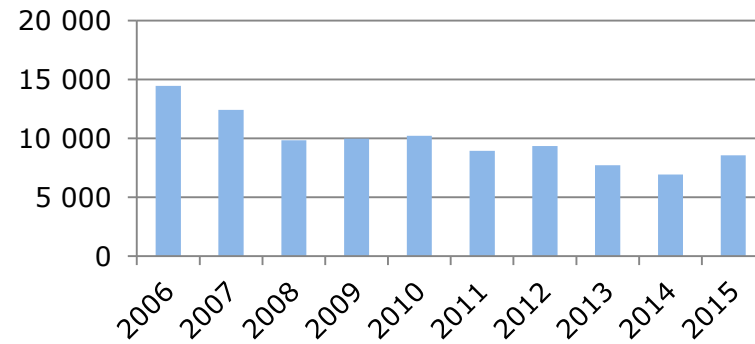
## Tonnes



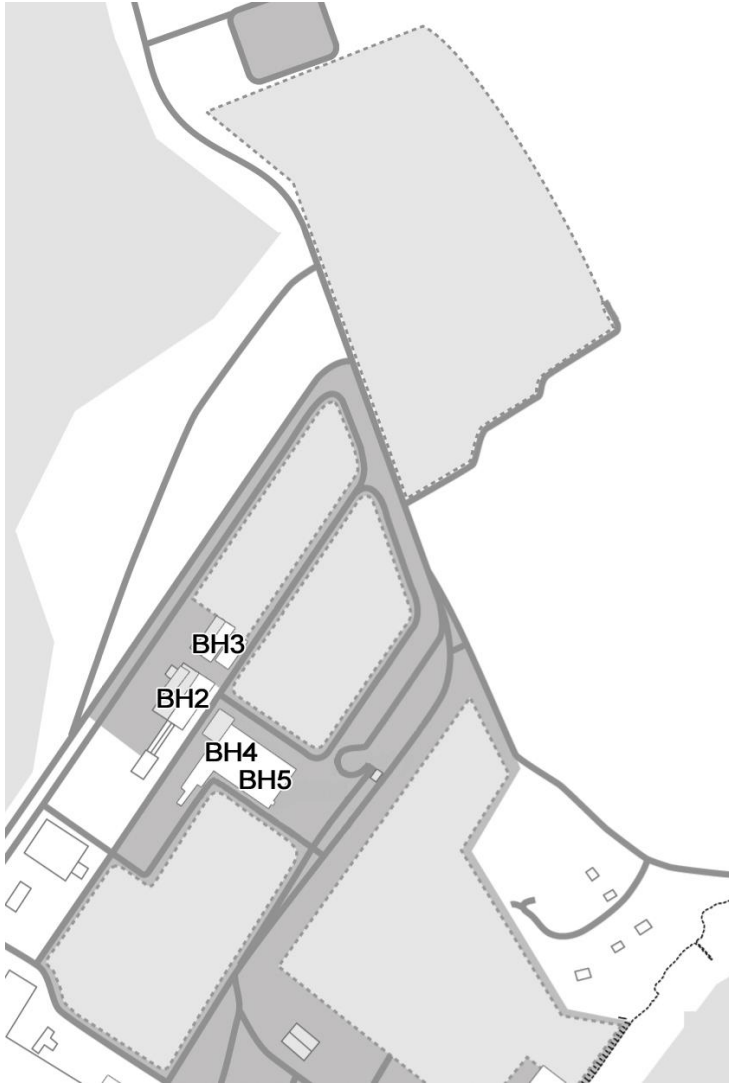
## Motor vehicles



## Containers, TEU



# Car department facts



## Capacity

- 80 000 PDI/PDS cars

## Storage

- 17 000 Parking spaces

## Warehouse (parts, accessories)

- 850 m<sup>2</sup>

## Hydraulic Lifts in Workshops

- 37 units

## Washing/Dewaxing

- Access to a highly environmentally adjusted washing and dewaxing facility.

## Sun filming

- Facility for sun filming of vehicles, with a high technology device for cutting of sun film

| Workshop | Size                 | Function                     |
|----------|----------------------|------------------------------|
| BH2      | 950 m <sup>2</sup>   | PDI/Anti-Corrosion treatment |
| BH3      | 900 m <sup>2</sup>   | PDS                          |
| BH4      | 2 700 m <sup>2</sup> | PDI                          |
| BH5      | 2 350 m <sup>2</sup> | CarBuilders                  |

# Pre Delivery Inspection (PDI)



## The PDI station

- General PDI
- Striping
- Accessories
- Anti-corrosive treatment
- Dewaxing and washing
- Paint and body shop
- Storage

## Brands

- Hyundai
- KIA
- Ford CV + 3 models cars
- FIAT/Alfa Romeo/Lancia
- Jeep



# PDS Dealer Service

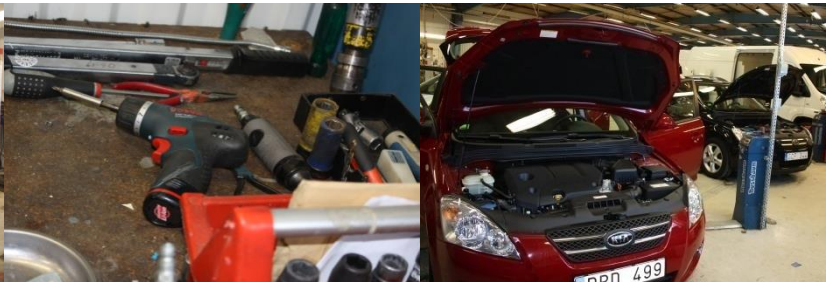


## The PDS station

- Serves as the dealers delivery workshop.
- Cost efficient
- Short lead times
- Mounts all type of accessories
- Storage

## Brands

- Opel
- Nissan
- KIA
- Hyundai
- Jeep
- Ford CV
- FIAT/Alfa Romeo/Lancia



# CarBuilders



## CarBuilders

- Sweden's foremost upfitter
- 35 building spaces
- High quality
- Superb knowledge
- High delivery reliability
- Cost effective solutions
- Custom made solutions for professional end-users
- Individual concepts
- All brands of commercial vehicles

## Customers

- Vattenfall
- Infratek
- Caverion
- Ericsson





# Thank you for your attention!











