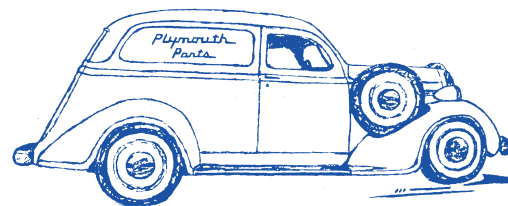


Plymouth[®] Marketplace



ADVERTISING POLICY

Ads will be accepted in good faith for Plymouth cars, Plymouth and Fargo commercial vehicles, Powell Sports Wagons and Plymouth-bodied Dodges and DeSotos (built for Canadian and foreign markets) for the years 1928-2001. Items listed as "Mopar" that may fit other makes as well as Plymouth will be allowed.

Ads will appear only one time and must be resubmitted for each issue. The only exception to this rule applies to ads in the PARTS SUPPLIERS AND REPRODUCERS, LITERATURE SUPPLIERS and CLUB/REGION "FOR SALE" sections.

Multiple ads (such as FOR SALE or WANTED items) **MUST BE submitted on separate sheets of paper.** Only the first ad will be printed if more than one ad is submitted on a single sheet. Ads should be on full-size paper.

Emailed ads are welcome and preferred.

Prices MUST BE SHOWN on all FOR SALE items. **Full name and address MUST appear** in each ad. Phone numbers with area code and hours to call, and email addresses, if available, should also be included on all ads

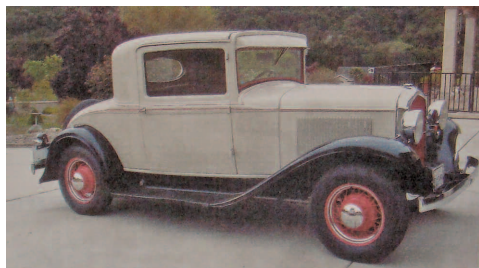
**PLEASE CHECK INSIDE FRONT COVER
FOR DEADLINE DATES.**

Advertising is free to Plymouth Owners Club members only. Photos may be included at no charge with each ad.

Non-member advertising cost is \$10 per ad. Ads with photos, \$15. Add \$3 to the above rates if requesting a copy of the issue in which the ad is to appear. Stamped envelope must be included for photo return. *(Please do not affix stamps, but enclose them in the envelope, as Canadian stamps will have to be used to mail from Canada.)*

Submit ads directly to: **Editor, PLYMOUTH BULLETIN**
288 Strathmillan Road
WINNIPEG, MB, R3J 2V5, CANADA
E-mail: editor@plymouthbulletin.com

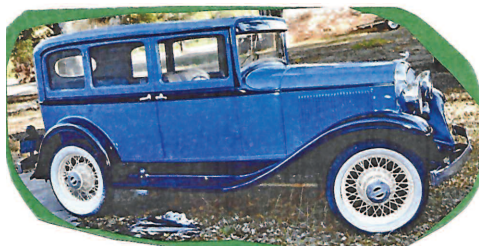
CARS FOR SALE



1931 PA coupe: rumble seat; PA engine rebuilt, 2009; new brake cyls, linings; new glass all around; rebuilt starter, generator, carb; extra set of wheels, tires, tubes; extra parts, instructional material. \$18,500, offers con-

sidered. **Henry Wespiser, Prunedale, CA. 831-663-9225.**

<henry@razzolink.com>



1932 PA Thrift: New top, interior, upholstery, headliner, carpets, brakes, paint. Ready to drive. \$13,500. **Fred Zampa, 6369 Houston Rd, Macon, GA 31216. 478-785-0275.**

1934 PE

phaeton:

Holden body (VIN PF90231); Rare, authenticated by Jim Benjaminson of the POC; Possibly the only car like this in USA; Six-cylinder, manual transmission, 63,000 miles (few miles since the total restoration); Restoration documentation available. Rated strong Condition #2. Featured in PLYMOUTH BULLETIN 313, March-April 2012 (Also BULLETIN 343). \$45,000. **Tim Kinkade, Iowa. 641-780-9144.**

<Kinkade@iowatelecom.net>



1934 PE 4dr sedan: 72,000 miles, nearly all original; pretty good condition, but has stored indoors 13 years; engine complete and in car but head is off and pistons and con rods removed for bearing replacement, new bearing and rings included, along with a new aluminum HC head (6.5:1 compression ratio); before teardown, car was driven on freeway nearly 70 mph; Original interior,

carpets, roof, running boards, glass; solid body, grey paint; All gauges work (speedometer reads low, maybe 10 mph on highway—why I got up to 70?; 6-volt electrics, silicone brake fluid, new brake linings, heater works; overrunning transmission and drivetrain in good shape; comes with service manuals and various ads and photos, extra parts, and 15 years of PLYMOUTH BULLETINS. Located in Fairborn, Ohio, titled in South Carolina. I live in GA, but can arrange for car to be inspected. Asking \$10,000 OBO. **Mark Steck, 253 St. Mary's River Bluff Rd., St. George, GA 31562. Call or text 937-321-6632. <mamsteck@gmail.com>**

1956 Ply 4dr sedan: Solid southern car; not running; red. \$2,500. **Fred Zampa, 6369 Houston Rd, Macon, GA 31216. 478-785-0275.**

1956 P29 Belvedere 4dr

sdn: Frame-off restoration, 51,895 original miles, 2nd owner; factory-original colors, rebuilt 277 V-8 (395 miles), PowerFlite; new trunion joints and brake system, good emergency brake; drives at highway speeds; fiberglass front fenders and much new sheet metal, no rust; all seats rebuilt down to bare metal; new headliner carpeting, windlace and door weather stripings; all SS side trim attached via hidden fasteners (no screws). Many spare parts. SEE story of this car in Sept-Oct, 2014 BULLETIN (328). Contact me for details, more features and more pictures. \$26,000. **Dick Friedman, 1502 Elmwood Ave, Wilmette, IL 60091. 847-256-1432.**

<HYPERLINK "mailto:rcfriedman@att.net" rcfriedman@att.net>



1964 Valiant con-

vertible: 225 slant six with a factory Hurst 4spd transmission; black vinyl bucket seats; manual steering, brakes and top; new OEM tires just installed. Car is unique, made



in Canada, has front clip of a Plymouth Valiant but from the cowl back is Dodge Dart (longer wheelbase). Older restoration but still presents well; not perfect but a good driver and people flock to it a shows. Asking \$12,250 obo; interesting trades considered. Additional information and photos on request. **Dick Roth, 7239 NW 85th Place, Johnston, IA 50131. 515-537-0252, cell. <dickroth19@gmail.com>**

1965 Fury III conv: 318 V8 re-built in 2014, auto trans; good condition with 65,000 on odometer; owned since 2004, put on 1,500 miles.

\$16,000. **Ronald Hopkins, Newport, Maine. 781-724-5505.**



CARS WANTED

Wanted: 1933, 1934 Plymouth, Dodge, DeSoto or Chrysler coupe or convertible, restored or a solid project. Paul Smith, 1848 Adler Ave, Richland, WA 99354. 509-942-9312. <psv8ford@cox.net>

Wanted: 1957 thru 1961 Plymouth, Dodge, DeSoto or Chrysler 2dr or convertible, restored or a solid project. Paul Smith, 1848 Adler Ave, Richland, WA 99354. 509-942-9312. <psv8ford@cox.net>

PARTS FOR SALE

1934 Ply parts: bellhousing complete \$65; (4) rear end U-bolts \$20; fan blade & pulley \$25; shifter tower \$50; column support \$15; complete rear end assembly, \$75 [you must pick-up]. **Nick Makris, 2700 Palm Lakes Ave, Fort Pierce, FL. 34981. 772-461-8846.**

Parts: 1936 Plymouth front emblems (2) upper & lower \$135. 1949 Ply horn ring \$75. 1946-48 "DELUXE" emblems \$75. 1941 NOS rear trunk emblem \$125. **Fuel pump heat shields** fit all Mopar 6 cyl. engines \$35. 1955 Ply re-built radio w/speaker Model 832, 7 button, 8 tube \$145. Parting the following Plymouths: 1936, 41, 46, 47, 48, 49, 50, 51, 52, 55. **Jon Kingston, 208 Vassar SE, Alb., NM 87106. 505-266-4602. <kingstonjon@centurylink.net>**

Ply/Mopar parts: flathead crankcase oil filler tube, straight, chrome plated \$30; Mopar Hadees Model 20 heater \$125; rear license plate bracket for Dodge/Fargo panel truck and some '30s Mopar cars \$80; Ply 8-1/4" locking hubcap \$100. **1936 Ply:** coupe splash apron, 3 pc, \$300; driver's side fender skirt \$300; speedometer face, glass, outer chrome-plated ring \$100. **E. M. Meadows, 115 Somerset Lane, Beaver, WV 25813. 304-253-0811.**

1946-48 P15 parts unless otherwise specified: Nice used radio grille \$35; used gauges--oil, amp \$12/ea; parking light stainless bezels \$10/ea; NOS control arm pin & nut pkg '39-54 #1241500 \$18; NOS lower control pkg '39-56 #1064687 \$80; NOS driveshaft flange assy #952539 \$25; Park or tail light lens \$12/ea, also NOS parklight lens \$15ea; brake light lens w/ ship \$15; chrome horn bezel v/gd cond #1115946 \$14; dash chrome bezel for Ply name-plate #1065789 \$30; used tall glass wdshld wshr bottle w/ pump, bracket & Mopar decal \$40; NOS gen. armature "40-48 #859900 \$25; NOS door striker plate #789720 \$10; service manual "What's New about Servicing" \$20; inside door handle #987067 \$20, used one \$10; NOS speedo shaft core #920402 \$20; Int glass dome light & chrome bezel #981369 \$18; also have some P15 stainless; ash tray receiver, chrome face plate \$; oil filter element NOS \$12; dual tubes for plug wires #1188452 \$30; chrome hood ornament v/g \$150; Spl Dlx plastic dash medallion circle 1065797 used \$35; plastic ornament horn centre w/ ship v/g 1115778 \$30; door i/s chrome garnish mldg apron 1151788 \$20; headlight ring 946942 \$10; ashtray knob cpe 1152384 \$20; ash-tray knob sedan 1152371 \$20; small NOS grille bars 1156662 and 663 \$40pr; rechromed taillight bezel \$50; gas gauge \$22; stainless hdlmp doors \$18; headlight doors stainless 1148824 (or 25) \$18ea; trunk handle complete (no key) v/g chrome \$80; P15 trunk handle assy, complete less key \$50; P15 heater parts; elbow 872168 \$10, defroster "Y" 8722170 \$10. **Other NOS Ply Parts:** rad caps '34-6 \$10, one '37-8 \$10; '40 full-circle horn ring 8854944 \$50; NOS gas filler cap chrome '53-4 \$20; NOS chrome wiper blades '53-56 \$25pr; NOS pkg old Mopar fuses 120151, 15amp \$5.50; NOS heater switch '51-4 1339794 \$20; NOS '38 upper rear eng mount 679602 \$35; original owner's manuals \$30ea: '35, 36, 41, 48, 49, 51, 52, 53; NOS pkg (6) Bakelite; '61 speedo core cable 2062766, V8 w/T/flite approx 75" long \$12; '57-58 radio w/ pushbuttons \$45; chrome radio grilles: '50 \$50; '55-6 \$35; '49 Ply Accessories bklt, 22 pgs \$25; '49 NOS heater switch w/ knob \$30; '56 hood chrome w/ ship 1646900 \$35; '57 used tailgt lens \$15; NOS spring shackles w/ bushings 1241693 fits '41-51 \$25; NOS gas pedal 798188 fits '39-41 \$20;

'38 hdlgt 684038 \$30; '39-40-41-42 taillight lens \$15ea; '58 park lens \$12; '61-64 NOS b/up lens 2094993 \$12; '49-50 NOS b/up light pkg 1302474 \$80; 1951-52 chrome park lgt bezels, lft & rt; P19 chrome taillgt bezel w/ reflector, fstbk model; v/g 1343383. *I have some other Mopar parts for '46-8 not listed. Pls reply w/ part # & SASE.* All parts priced in US funds, plus s&h. **Norm Pennie 3260 E. 22 Ave, Vancouver, BC V5M 2Y9, Canada. (604) 437-5635.**

1948 P15: radiator, exterior like new, flow 4 1/2" (specs, 5"-6") \$125; 1949 DeSoto NOS clock \$150; Mopar trunk/grille guard bar just rechromed, 33-1/8" between bolt hole centers, stamped "EPA No 1210" \$250. **Doug Wood, 32 Depot Street, Westford, MA 01886. 978-692 5645. <dougwood@yahoo.com>**

Seat covers: vinyl 1949-80 bench seat cars; new; kept in dry storage since '60s; plaid or striped (not original patterns). \$125 per car, plus shipping, Hog rings \$5, hog ring pliers \$12. Send email address (if you have one) and phone number. **Ken Weinstein, 44 Valleybrook Ln, East Amherst, NY14051 (near Buffalo). 716-689-6888 nights. <Kmw57@hotmail.com>**

1955-56 Plymouth: Hollywood style horn ring, #8.5 condition (of 10) pictures available \$250. Door latch for front passenger door of 1956 4dr Ply hardtop, part # (B) 1683540, may be usable on other '56 Chrysler makes, excellent, very little wear on "star wheel" \$130. "PowerFlite" script badge, no cracks, all mounting studs intact, slight fine scratches, slight abrasion at end of last "e" \$75. **ALL of the following are FREE, except for cost of packing and shipping (call for conditions):** 2 dome light bases; "Plymouth" in script; pair of headlight bezels; "PowerFlyte" in script; right front vent window assembly (no release knob); 3 inside door handles; 6 bows for headliner (incl. assembly for dome light base); working driver's side horn + non-working? pass side horn; plated and unplated sun visor posts; new door-window-glass wipers; set of front bumper guards; '56 --"V" trunk emblem; 2 tail light bezels; driver's side back up light bezel; insert for center piece of grille, incl gold "V"; approx 12 stainless trim pieces for sides of '56 Belvedere. **Dick Friedman, 1502 Elmwood Ave., Wilmette, IL 60091. 847-256-1432. <HYPERLINK "mailto:rcfriedman@att.net" rcfriedman@att.net>**



1956 Plymouth Powerflite automatic transmission # 1633721-1. FREE, must pick it up in **Mocksville, North Carolina** which is 45 minutes north of Charlotte, N.C. **Jerry Whitfield, 336-749-5922. NO texting**

Brake kit: After-market, new, mounted but never used ECI EC757CK Brake Kit for converting front drum to disc with simple bolt-to-knuckle adapter bracket; rolls on original spindle. Complete setup including rotors, hubs, calipers, brackets, caps, o-rings, bearings, seals. \$400, plus shipping. **William Kemman, 2986 E. Geddes Pl., Centennial, CO 80122. 303-908-9695, <bkem2986@gmail.com>**

Miscellaneous parts: #3879792 2-barrel Holley carb kit \$30; #4131181 2-barrel Carter carb kit \$35; (2) #3837521 4-barrel TQ carb kit \$35 each; (2) #4033390 D-100 truck inserts small \$25 each; (2) #4033341 D-100 truck inserts big \$30 each; #4111488 re-man distributor 8-cyl \$50; (9) #3755854 RJ87P spark plugs \$35; #2098244 contact set \$15; #2098058 condenser \$15; 1974 power steering unit w/brackets \$50; 360 intake manifold with rebuilt Thermoquad carb. \$250. **Nick Makris, 2700 Palm Lakes Ave, Fort Pierce, FL. 34981. 772-461-8846.**

PARTS WANTED

1934, wanted: oil filter w/ in and out lines. **Doug Hattersley, 2030 Debra Ln, Marietta, GA 30066. 770-856-1562. <geodoug66@gmail.com>**

1934 Ply, wanted: right front door lock assembly with key. **Nick Makris, 2700 Palm Lakes Ave, Fort Pierce, FL. 34981. 772-461-8846.**

1935 PJ, wanted: outside Yale door lock, NOS or very good condition #700659. **Dennis Buchholz, 2909 Hwy 1694, Crestwood, KY. 502-552-0076. <Buchholz001@bellsouth.net>**

1936 Ply, wanted: correct Carter down-draft carburetor—Carter C6 model or replacement BBR1 (same carb fits years 1933-1938). **Ron Ziembra, 171 Great Pines Dr, Oxford, MI 4837. 248-535-790, EST.**

1936, wanted: headlight bright trim rings. **John Regan, 116B Vaughan Dr, Richland, MS 39218. 601-519-2449. <lostpelicangarage@gmail.com>**

1941 P12, wanted: clock for P12. **Tom Gagner, 18724 Ridgewood Road, Wayzata, MN 55391. 952-404-59760, between 9:00 am - 3:00 pm CT, Mon-Fri.**

1950 Ply, wanted: set of rear fender gravel guards. Contact **Doug McRae, Manitoba, a 204-771-1229. <doug@plainsmanequipment.com>**

1956, wanted: door latch with star wheel for passengers front door of 4-door sedan. **Jerry Whitfield, 2128 Leeds Lane, Winston Salem, NC 27103. 336-749-5922.**

1960 Fury, wanted: left and right clear reverse plastic lenses in very good shape (no cracks), or NOS. **Scott Nickett, PO Box 1553, Doylestown, PA 18901. 267-242-178 <snickett01@gmail.com>**

1965, wanted: un-silenced air cleaner for a 273-2bbl engine; the type that has a clamp-on base that attaches to the carb throat and pulls air from under the air cleaner (no snorkel). **Ron Kline, 451 Lehigh Rd, Rochester Hills, MI 48307. 248-841-6534. <LLcoolgrey@aol.com>**

PARTS REPRODUCERS AND SUPPLIERS

These ads are run continuously until the advertisers cancel or change them. **ADVERTISERS, PLEASE CHECK YOUR ADS TO BE SURE THEY ARE UP TO DATE.** *Note: Alphabetized by country, state/prov., city*

1957, 1958 Plymouth reproduction dashpads. Styled from original '58 Fury survivor dashpad. Easy to fit. Get rid of your shrunken, cracked, faded dashpad and give your car that low mileage look. Any color. Built to fussy restorer specs, with attention to fine detail. References available. US\$600 includes protective packing and insured shipping to any doorstep in the world. Satisfaction guaranteed. Photos available by email <FURY@xtra.co.nz> or phone 011-64274-888-111. **Glenn Barratt, New Zealand.**



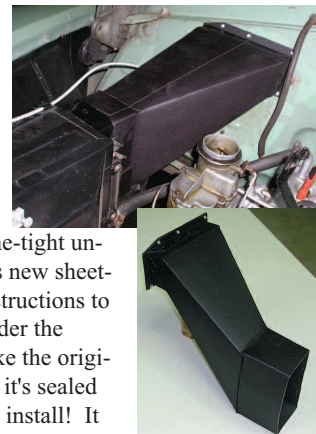
NOS AND USED MOPAR PARTS & LITERATURE 1935 to the present. Online catalog has 43,000 different items listed by part number, description, year, model, casting number or supercession. Also access to the partsvoice database is available by using the link on the front page so you can find items that I don't stock as long as you have the part number. <www.arizonaparts.com> **Arizona Parts 320 E Pebble Beach Dr. Tempe, AZ 85282. (480) 966-6683 (Martin Kolner)**

Glovebox custom reproduction for all Plymouths and other cars using the original style materials including the option of the original color and style of "blown-on" flocking material. Have almost all Plymouth/Mopar patterns. Inquire on other cars. Price per glovebox: \$95 with flocking on the inside or \$75 without flocking. Add \$10 for shipping and handling U.S. Send payment to: **Paul Taylor, PO Box 618, Arroyo Grande, CA 93421. (805) 489-7822, leave message. <pwjitaylor@msn.com>**

1949-50, 1951-52 underhood air duct assembly: Here is a chance to replace that old messy-looking air duct with an affordable, safe new ORIGINAL LOOK SHOW QUALITY piece. This new duct replacement is designed to replicate the original fiber duct in every

way--looks, style and function.

The assembly includes the new precision formed panel board duct riveted to a new steel bracket with a new 1/8" thick cork gasket attached to the bracket. The whole assembly is sealed much like the original in a water proof rubberized coating to ensure a safe air- and fume-tight underhood seal. The new duct includes new sheet-metal screws along with detailed instructions to fasten the new duct into its place under the hood. The new duct is functional like the original, it looks authentic, it's complete, it's sealed and safe, it's economical, it's easy to install! It is the REAL DEAL! Price to Plymouth Club members is \$149+\$15 S&H. Please designate the year of application: whether '49/50 or '51/52 when ordering. Send payment to: **Paul Taylor, 125 Painted Sky Way, Arroyo Grande, CA 93420. (805) 489-7822. <pwjitaylor@msn.com>**



1953-54 Heater under hood air-duct assembly for Plymouth and Dodge (6 cyl.) cars

(for heater models 103, 104, & 505) Now Available! Ready to install, original style, look, fit and function. All the benefits of our now decade-long time produced 1949-1952. Heater air-duct for '53-'54 Plymouth and Dodge 6 cyl. owners. Price to Plymouth Club members is \$209 + \$17 S&H. Send payment to: **Paul Taylor, 125 Painted Sky Way, Arroyo Grande, CA 93420. (805) 489-7822. <pwjitaylor@msn.com>**



Air cleaner support brackets reproduced to exact original for '39-54 Ply, Dod (cars, trucks), DeS, most Chrys. Steady brackets for most heavy duty oil bath type air cleaners. Specify year when ordering \$45 (check or M.O.) ppd. in US. **Paul Taylor, 125 Painted Sky Way, Arroyo Grande, CA 93420. (805) 489-7822, leave message. <pwjitaylor@msn.com>**

1939 Plymouth speedometer dome glass restoration \$250; Clock dome glass restoration \$80. Our process is NOT a cheap decal or vinyl stick-on, but silk screened on your dome glass and will look like a new original. Send your domed glass and a check for \$250 plus \$20 for return shipping. If your domed glass is broken and you have no replacement, we can send you a FLAT Speedometer Glass for the same price. Call if you have questions. **Scott Young 332 Devon Dr. San Rafael, CA 94903. 415-472-5126. <www.showcarquality.com>**

1940 Plymouth speedometer & instrument dash glass, 3-piece set, 3 colors, in stock, they look like new originals. Our process is NOT a cheap decal or vinyl stick-on, but silk screened and look like new originals. Send check for \$250 plus \$10 shipping. Call if you have any questions. **Scott Young 332 Devon Dr. San Rafael, CA 94903. 415-472-5126. <www.showcarquality.com>**

Driveshafts for Plymouth, Dodge, Chrysler, DeSoto. New shaft replaces old trunion type, bolts in, no modifying. \$395.00 and up, plus shipping. **Joe McGinnis, 234 Deer Foot Road, Blairsville, GA 30512. (706) 781-2805 / (864)980-1616, Verizon cell. <callent.beefalo@hotmail.com>**

Oil filter: cast aluminum, replaces old tin throwaway type that has a 1/8 NPT fitting at each end. 4-1/4 dia x 6" long; unscrews to replace Neon filter inside; will work with any engine that filters just the by-passed oil. \$165 plus shipping. **Joe McGinnis, 234 Deer Foot Road, Blairsville, GA 30512. (706) 781-2805 / (864)980-1616, Verizon cell. callent.beefalo@hotmail.com**

Emergency brake need a little help? I can help fix all years. Most brands in stock for speedy exchange or can rebuild yours if not in stock. Most units run \$55 for Ply Club members. Also have shoes for the later drum type. All units exchange plus shpg or \$25 core charge. **Dennis Cutshall, 29487 Old Lincoln Hwy, Honey Creek, IA 51542. (712) 545-3014.**

Highest quality concours chrome plating, brilliant metal polishing, die cast restoration, stainless steel and aluminum trim restoration. Professional metal craftsmen complete all work. Work is 100% guaranteed. Contact us today for a quote. **The Finishing Touch, Inc. (Mark Silich), 5580 Northwest Highway, Chicago, IL 60630. 800-403-4545. www.thefinishingtouchinc.com**

Are you tired of your electric clock not working because of worn parts or burned out coil or contacts? Would you like to convert your clock to an accurate and reliable timepiece that works and stays working? Instruments Services, Inc., the factory-authorized service of Borg Instruments, the original clockmaker, offers a conversion kit which takes only 30 minutes to upgrade your original 1960-81 model year Borg clock from an electro-mechanical to an accurate and reliable quartz drive. Only the internal works are changed; the clock exterior remains original equipment. Either do it yourself or have Instrument Services do the tougher and older clocks for you. For more info, contact: **Peter Huber, Instrument Services, Inc., 4075 Steele Drive, Machesney Park, IL 61115.. Toll Free: 1-800-558-2674; in Ill., call (815) 623-2993; Fax (815) 623-2993.**



As a 1934 Plymouth owner, I found it nearly impossible to find the window crank knobs for my car. These are reproduced from the exact original, with the original bulls-eye and recessed hole to accept the original shaft on your existing shafts. Can simply be attached with a 2-part epoxy, such as JB weld. If you have any questions please call me. Knobs are \$22.50 each plus \$5.00 shipping and handling for US orders. **Ron Kindred, 9017 E. Big Rock Rd, Morgantown, IN 46160. (765) 342-1757.**

1931- 32 Plymouth front hood hinge repro from stainless. When restoring my Plymouth, a machinest friend made me dies so I could make a new hinge. I had extra material so I made a few extra. I have seen the same hinge on other Plymouth, Dodge, Desoto & Chrysler cars 1930, 1931, 1932. Includes 2 each stainless screws, washers, nuts. \$25, plus \$5 shipping. Any question: tel. or email. **Bob Nixon 51887 Quince Rd. South Bend, IN 46628. 574-277-4059. <bob.nixon41@gmail.com>**



I reproduce the center convertible top latch to fit 1955-56 Plymouth and Dodge convertibles. There are only eight (8) available @ \$350ea plus shipping. No others will be made. Also have a rough



but usable 1953-54 top latch. **Gerry Charvat, 16741 St Rd 1, Spencerville, IN 46788. 260-413-4732. hotrodshop@mchsi.com**

1933-34 Plymouth, Dodge lower front cowl patch panels; wraps around firewall to the door post; exact reproduction of the originals; made from die stamped heavy gauge steel; measure 8" high and 17" long. **Floyd Riley, 303 South Delilah, Sedan, KS 67361. (620) 725-5754. debriley@terraworld.net**

World's largest selection of new and new old stock parts for Plymouth, 1930-1970! One stop shopping for most cars. We have brakes, weatherstripping, steering, gas tank, glass, front and rear axle, engine rebuild parts, suspension, electric, cooling, pedals, hubcaps and MUCH much more. 16,000 square feet of MoPar parts. Same day shipping on most orders. Free catalog for fellow Plymouth Owners Club members! Andy Bernbaum Auto Parts, serving MoPar hobbyists worldwide for over 35 years. **Andy Bernbaum Auto Parts, 93 Border St, West Newton MA. 02493. 800-457-1250, emailorders@oldmoparts.com** or check us out on the web at **oldmoparts.com**.

NOS, reproduction, used Mopar parts & literature: weather seals, window kits, interiors, floor mats, trunk mats, rubber items, custom molding of smaller rubber parts, headliners, glass; restoration supplies, fabrics, etc. *When requesting NOS, please try to supply Mopar part number.* **Pat Walsh Restorations, 383-R Lowell St, Unit #4, Wakefield, MA 01880. 781-246-3266. <www.patwalshrestorations.com>**

Plymouth mascots in stainless steel: 1928-29 winged cap; 1930 winged cap; 1931-32 parking cap; 1931-32 goddess; 1933 PC & PD twist-on goddess; 1933 PC Deluxe bolt-on goddess; 1934 ship, 1935 ship; 1936 ship, Made in stainless steel from the lost wax casting process; polished and flash chrome plated ready to install. 1929 and 1933 Plymouth door handles in stainless steel; may fit other years. Visit our websit <www.americanarrowcorp.com> **Don Sommer, American Arrow Corporation, 105 Kinross St, Clawson, MI 48017. 248-435-6115. <dsommer@tc3net.com>**



Newly remanufactured taillamp bracket reinforcement: OEM part #384503. This bracket is installed on the underside of rear fenders; fits right or left side. Fits these Plymouth applications: 1932 PC up to serial #1820989; 1934 PE, PF, PG (all except PE close-coupled sedan); 1935 PJ, all; 1936 P1, P2 (except 4dr touring and 7-passenger sedan). Price for (1) piece: \$20 + \$5 s&h; \$36 for (2) pieces + \$6 s&h to lower 48 states, USA. For international shipping, contact seller. Send check or money order US funds to: **Tom Russell, 8 Wallinwood Ave NE, Grand Rapids, MI 49503-3720.** Allow checks to clear. (616) 322-4970, after 7pm EDT. **trussell42@att.net**



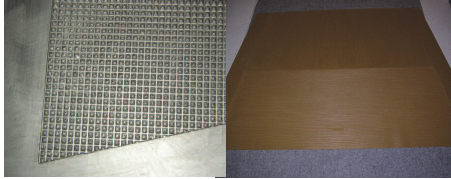
1933-34 Plymouth/Dodge rubber gear shift boot with embedded metal reinforcing plate. Duplicate of PN 471319. Color: Black. I had

these made when I couldn't find anything close to original. Price: \$85 +\$6 shipping. **Bill Anderson, 3301 Saddle Ridge, Highland, MI 48357. 248-881-6510. <old50grit@comcast.net>**

Body repair panels: 1935-1952 Chrysler, Plymouth, Dodge, DeSoto automobiles. **The Plymouth Doctor (Wayne Brandon), 5745 Forest Green Drive, Perry MI 48872. (517) 625-PLYM. www.plymouth-doctor.com plymdr@aol.com**

Body repair panels: 1933-1947 Plymouth, Dodge light trucks (1/2 ton to 1-1/2 ton). **The Plymouth Doctor (Wayne Brandon), 5745 Forest Green Drive, Perry MI 48872. (517) 625-PLYM. www.plymouthdoctor.com plymdr@aol.com**

1935 Plymouth,
1937-1941 Ply,
Dodge, DeSoto,
Chry. Front floor
mats with correct
pattern in brown or
black. Either mat \$225 + \$25 S&H, most locations. **William Knudsen, 341 Orange St, Wyandotte, MI 48192. (734) 626 0261. wknudsen402@aol.com**



1946-48 taillight reproductions, all three; rapid-fire LEDs. \$250+shipping. **Dale Hegfors, 614 E. Camp St, Ely, MN 55731. 218-966-2416 (No computer or text messages)**

1934 new bumper guard bolts: same shape and special profile except head is chrome plated instead of having a thin piece of stainless cap crimped to bolt head as per original. (When I restored my PE, I had extras made because I could only find beat up ones.) \$10ea prepaid or 8 pcs for \$59 prepaid in lower 48. Send check to: **Jere Longrie, Box 803, Grand Rapids, MN 55744. 218-259-7625, cell; 218-259-7625.**



1934 PE new chrome wing ornaments: insert onto top of headlight shells; exact profile and metal as per original. (Could not find any good enough to plate when restoring my '34 so had extras made. \$69 for pair, prepaid in lower 48. Send check to: **Jere Longrie, Box 803, Grand Rapids, MN 55744. 218-259-7625, cell; 218-259-7625.**



Goodyear Collector Series tires: The PROPER tire for your Plymouth or MoPar in original tread design patterns. 6:95x14 in 7/8" whitewall or 3/8" dual red stripe. 7:50x14 in 1" or 2.25" whitewall. 8:00x14 in 1" or 2.25" whitewall. 6:70x15 in 4.25", 2 11/16", 2.25" or 1" whitewall; also available in blackwall. 7:10x15 4.25" or 2.75" whitewall; 7:60x15" 2.75" whitewall. 6:00x16 with 3.5" whitewall or blackwall. 6:50x16 with 4" whitewall or blackwall. Performance tires also available including 6:95x14 "Blue Streak" with raised white lettering and blue stripe for the Barracuda Formula S only. Other performance tire sizes available including E70, F70 and G70 sizes; 7:75x15" also available. You're done the rest right, now why not the proper tires? For price quotes please email (no phone calls please as I'm usually not home to answer your call). Special discount for Plymouth Club members. **Jim Benjaminson, P O Box 345, Walhalla, ND 58282-0345. benji@utma.com for quickest reply.**

Goodyear Collector Series tires for the early cars: 4:75x19" in 2 7/8" whitewall or blackwall. 4.50x21" in 2 3/4" whitewall or black-

wall. Tubes and lines with TR-35 valve stem also available. Non-directional tread 6:00x16 6-ply rated (blackwall only) for trucks and military vehicles. You've done the rest right, now why not the proper tires? For price quotes please email (no phone calls please as I'm usually not home to answer your call). Special discount for Plymouth Club members. **Jim Benjaminson, P O Box 345, Walhalla, ND 58282-0345. benji@utma.com for quickest reply.**



Goodyear wide whitewall radial tires. Sizes available include 205/75R14 with 2 5/8" whitewall. 15" sizes include 205/75R15 and 215/75R15 in 2 5/8" whitewall. 225/75R15 in 3" whitewall and 235/75R15 in 3 1/2" whitewall. NOT original design tread pattern but wide white radials for those who want an authentic look with riding and handling qualities of a radial tire. Made in the USA by Goodyear For info send SASE to **Jim Benjaminson, P O Box 345, Walhalla, ND 58282-0345** or email

benji@utma.com Please - no phone calls as I'm usually not home to answer your questions.

Running board mouldings for 28 to 32 PA: I can supply repro in aluminum. I have them on my car, really nice! For pictures, email. **Bob Romano, 251 Woodlawn Ter, Collingswood, NJ 08108. (856) 858-6291. hobnroman@yahoo.com**

Vintage American Parts Company is now offering many new and exciting products brand new reproduction hood ornament clear plastic inserts for \$45 for POC members. Wide variety of brand new **hood springs** from 1942 all the way up to 1961 models; all hood springs are brand new, made from hardened heat-treated steel, guaranteed for a lifetime. Brand new **thermostat housings** for flathead 6 exact duplicate of the original **HIGH QUALITY CASTING!** These housings are brand new and made from high-quality cast iron. Originals tend to rot out from 70-plus years of water pumping through them; get a brand new replacement thermostat housing! Housing for thermostat with bypass port: part is 5 in. tall; mounting holes are 3-1/4 in. apart. Top hose connection is 1-3/4 in. diameter, lower hose connection is 1 in. diameter. Here is an opportunity to replace your rusted-out thermostat housing with a **NEW PART!** If you are looking for **brake parts** come to the source: master cylinders, wheel cylinders, brake hoses, brake shoes, most years in stock from 1928-1961. All brand new **hydraulic parts** of recent manufacture. If you need a **fuel pump** for your flathead 6 come to the source; brand new **588 fuel pumps** in stock; ethanol tolerant diaphragm, 2 year warranty \$99.99. **1946-47-48 Plymouth rocker molding clips** are also available \$14 each. 1949-1952 Plymouth brand new fuel sending units \$99.99. **1940-54 Plymouth fuel tank strap sleeve nuts repair:** Most of these are rotted and rusted out or the threads are stripped, or missing. Get a new set today. These sleeve nuts slide through your hole in the trunk and fasten to the tank straps under the car. These are brand new and made of 303 stainless steel, 3/8 internal thread. These parts are an exact duplicate of the original sleeve nuts but now made of high quality stainless steel, one-piece machined. Enjoy another Vintage American Parts Company Restoration creation. **Michael R. Warshaw, Vintage American Parts & Restoration, 158 Allen Blvd, Suite B, Farmingdale NY 11735. 516-233-7788.**



<<http://vintageamericanpartsoflongisland.com/>>

NEW Parts: Brake shoes 1937-61 \$45 axle, exchange; disc pads OEM style \$35; front emergency brake cables 1942-up \$35; emergency brake shoes and bands \$45 exchange; tie rod ends \$15-\$35; pivot pins \$45; pivot pins \$45pair; rebuilt starters, generators, voltage regulators, 6-, 12-volt; generator cut outs \$25; 1940s-60s shock absorbers \$35pr; 1957-up electric wiper motors \$125; 1930s-up headlight switches \$45, 1935-48 valve grind gasket set \$35; 1956-up water pumps \$50; fuel pumps \$25; piston rings 6-8 cylinders \$35; 1920s-up tune up kits \$25-50; woven brake lining \$6/ft; 1962-72 Valiant lower ball joints \$85pr; 1946-48 sedan trunk lid, no rust \$250; 1936 NOS ammeter \$45; 1950s-70s hub caps \$65. set of 4. **Donald Nowak, 3820 Lake Shore Rd, Blasdell, NY 14219. 716-824-2292. <oldcarnut007@aol.com>**

Brake booster rebuild: \$115 to \$155, 1962-90. 1957-61 oval bellows (new bellows) \$300. Bendix oval can \$225. Hemi boosters and brackets available. Rebuild yours or exchange. Plating available. Call "**Booster**" Dewey at: **Power Brake Booster Exchange, 4335 SE 63rd Ave #1118, Portland, OR 97206. 503-238-8882. boosterdeweyexchange.com**

Interior kits available for several models of 1933-34-35. Duplicated from original cars. Will do other years and models if your old interior is intact. Kit includes headliner, seat covers rolled, pleated and filled, all interior panel parts, rug, visors and assist straps on your hardware and all trim. Also offer a complete line of car care items. For more details, prices and samples of cloth, contact **Kathy at Schrack's Classic Auto Interiors, 6645 Mountain Rd, McAlisterville, PA 17049. (717) 463-3384. kathyschrack@yahoo.com**

Ed Spiegel Antique Moparts Co. NOS parts for 1937-1966: moldings, lenses, medallions, headlight rims, seals, suspension, brake, original shop and part manuals, bumper guards, hub caps, plus much more "all new original." email parts requests to [<parts4u@aol.com>](mailto:parts4u@aol.com) or parts requests also at [<antiquemopar.com>](http://antiquemopar.com) **Edwin Spiegel, 3521 Burnett Dr, Murraysville, PA 15668. 412-559-6880, cell; 724-733-1818, home.**

1932-35 Plymouth Parts. We have many small parts to help finish your restoration. They include windshield frames, swing out hardware, running boards, wood roof kits, oval bumper bolts, bumper bracket bolt base and cover, 1933 taillight stands and other quality reproduction parts. We also make windshield frames for most other Plymouth, Dodge and Chrysler cars and trucks. Also we make frames for many other makes and models of antique cars and trucks. Call, write or e-mail for a free catalog. **N/C Industries Antique Auto Parts, 301 So. Thomas Ave., PO Box 254, Sayre, PA 18840. (570) 888-6216. sales@windshieldframes.com windshieldframes.com**

Woodgraining. National show quality. 20 yrs experience. **Bill Gratkowski, 515 N. Petroleum St., Titusville, PA 16354. (814) 827-1782, evs.**

1964 Plymouth hood ornaments: 361, 383, and 426. Show quality chrome-plated brass reproductions with anodized aluminum engine size tags (raised numbers) as original. Excellent reproduction \$495 ea. Engine size tags \$75 pr. Free shipping to club members. **Dan Franzetta, 308 Bells Mills Rd., West Newton, PA 15089. 724-244-9720. <plymouthknut@gmail.com>**

R&R Fiberglass & Specialties, specializing in heavy duty fiberglass fenders and body parts for '31-36 Ply, Dge cars and '33-38 trucks. Also aluminum grille inserts & dash panels. Free brochure. **R&R Fiberglass & Spec., 4850 Wilson Dr. NW, Cleveland, TN 37312. (423) 476-2270.**

1931-48 Ply; 1933-85 Ply and Dod trucks; 1931-39 Dod cars. **R & R Fiberglass and Specialties,** specializes in heavy duty fiberglass and

body parts for Plymouth and Dodge cars and trucks. Also available: 1932-38 Ply/Dod aluminum grill inserts. Contact us for a free price catalog at: **R & R Fiberglass and Specialties, 571 Randolph Lane Decatur, TN 37322. (423) 334-4455. rrfiberglass@wingnet.net**

Castings: cylinder heads, intake/exhaust manifolds, blocks and other cast items mfg'd on request. All alloy, **EMI (Empire Motors Inc.), R. Perrigey, 13451 Montana Ave., El Paso, TX 79938 USA. 915-856-9607; Fax 915-856-9637. info@empiremotorsinc.com**

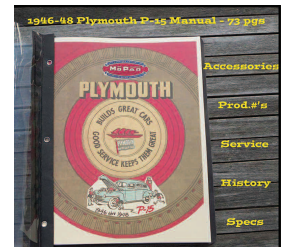
Plymouth, Maxwell, Chrysler, Imperial, DeSoto, Dodge H/C aluminum head finned and non-finned and standard iron cyl. heads; exhaust/intake manifolds. Plym 1932 PB, Ply/Dod 1933-54, DeS '34-36 Airflow 6 H/C 7.0/1 alum cyl heads 1937-50s H/C alum heads, 2-2B finned alum intake manifolds mfg'd to order. Other cast items mfg'd on request. **R. Perrigey, 13451 Montana Ave., El Paso, TX 79938 USA. 915-856-9607; Fax 915-856-9637. info@empiremotorsinc.com**

Reproduction Running Boards. 1932 PB series only ("32 DeS SC); 1933-42 Ply ('33-34 Dodge pass.); 1933-38 Ply/Dodge P.U. Call or write for prices. **Charles R. Light, Ram Reproductions, Ararat, VA. 276-251-1023. Visit our website: <www.ramreproductions.com>**

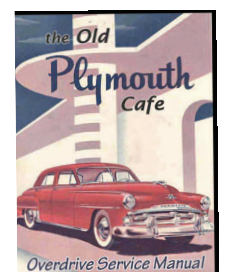
After 43 years of serving the needs of Mopar enthusiasts, we're still going at full throttle. We have a mountainous NOS inventory, mid-1930s to 1980s, including many thousands of rare impossible-to-find items, all guaranteed under our no-hassle, no-small-print 30-day return policy. View it all at www.dpmotorparts.com, or send \$10.00 (\$15.00, overseas) for our 440-page NOS parts catalog on computer disk. Mastercard, VISA, Discover welcome. **Len Dawson, 15541 Yokeko, Anacortes, WA 98221. FAX: (360) 293-1032.**

Finder's fees paid for leads resulting in acquisition of virgin NOS Mopar inventories, 1940-83. Top prices paid for quality parts. **Len Dawson, 15541 Yokeko Drive, Anacortes, WA 98221. Fax: (360) 293-1032.**

1946-48 Plymouth owners P15 information manual: original info: production by body style, for months and years, serial #'s; service info: lubrication and wiring, engine, clutch, suspension, brakes and U-joints; factory info: specifications, P15 assembly line pics, accessory pics and prices; trivia info: old ads, restoration and articles on P15 history and differences. This new repro copy is 8.5 x 11" in size and has 70+ pages of compiled info. Original, factual and interesting reading, an enjoyable and great reference manual for any P15 owner. For ALL P15s, Deluxe and Special Deluxe models built from Dec. 1945 thru March 1949. \$19.50 - free USA shipping—check, m/o or Paypal. **Neil Riddle, 20303 8th Avenue NW, Shoreline, WA 98177-2107. (206) 285-6534, days. <seaplym@hotmail.com>**

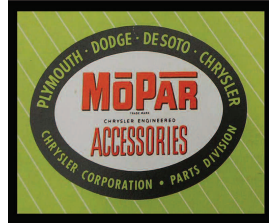


1952 Mopar OVERDRIVE Tech Manual: Here's a new repro copy of a 1952 MoPar O/D manual, same 8.5 X 11" format as it was originally presented to the Chrysler dealer mechanics for servicing the NEW Borg-Warner R-10 overdrive transmission for 1952. This booklet of information covers: O/D operation (mechanical & electrical), also - O/D controls & service (wiring & troubleshoot-



ing), and O/D maintenance (disassembly, reassembly & installation). A total of 33+ pages of tools, tech information & pics for use on: ALL Plymouths with manual transmission 1940 thru 1955. A great book to have on hand for that overdrive installation on your old car and some truck. \$18 ea + \$4.50 shpg. to USA. For more info, just email: <seaplym@hotmail.com> or call days in Seattle **206-285-6534**. Payment can be made by check, money order or Paypal. **Neil Riddle, 20303 8th Avenue NW, Shoreline, WA 98177-2107. (206) 285-6534, days. <seaplym@hotmail.com>**

"MoPar Accessory Booklets" from 1949 thru 1962; copies of the original parts counter brochures, the amount of pages vary per year, usually 30-50+ pages of info and pics of those rare Mopar accessories that were offered from the factory. All pages are bound in a color folder with the first page in color as original. A great gift for the Mopar Fan. \$19.50 each, free USA shpg. **Neil Riddle, 20303 8th Avenue NW, Shoreline, WA 98177-2107. (206) 285-6534, days. <seaplym@hotmail.com>**

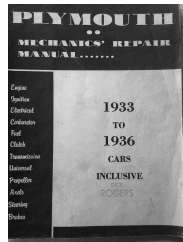


LITERATURE SUPPLIERS

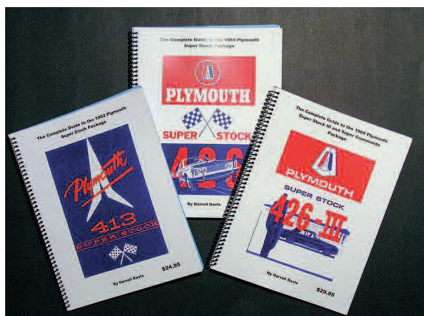
Ads in this category will be run continuously until advertisers request change or deletion. "Literature for Sale" ads will appear only once. All literature ads, unless specified for "Literature Suppliers" will be listed under LITERATURE FOR SALE.

1934-70 Plymouth service manuals: 1934-54 \$29.95, 1966-2000 \$25-\$70; 1950-65 parts interchange manual \$39.95; 1968-74 parts interchange manual \$24.95; other parts manuals 1928-48; Australian Valiant service manuals 1961-70. **Alex Voss, 4850 37th Ave So, Seattle, WA 98118. (206) 721-3077. www.books4cars.com**

1933-36 Plymouth mechanic's repair manual for cars: Shown are the front and index pages of an original 59-page manual. This is among other references collected when our 33PD was restored, 1973-83. I have scanned the complete manual as individual .jpg images onto CDs. I offer a CD to any club member who wants a copy. No charge but I ask to be recouped for the cost of mailing and the minimal cost of the CD itself. Send me \$5-10 after you have reviewed the product. **Robert Rogers, PO Box 2076, Shelton, WA 98584. 360-549-6542. <rrahgers@msn.com>**



The Guide to the 1960 Plymouth Sonoramic Package, 1961 Plymouth Sonoramic Package, 1962 Plymouth Super Stock Package, 1963 Plymouth Super Stock Package, 1964 Plymouth Super Stock & Super Commando Package and the 1965 Plymouth Super Commando Package.



Written and published books on Plymouth's high performance packages, by Darrell Davis, retired Chrysler executive and former NHRA record holder. Written because I've seen too many "tributes"

being offered as real cars that damage the value of real cars. Darrell Davis compiled all the information contained in the files of Chrysler's archives on these cars. Because of his ties to the company, Davis was fortunate to be able to access the records, an enormous task considering he had to look at every record of every car built to gather this priceless information.

Chapters in each book include 1. Public Announcements; 2. Dealer Announcements; 3. Coding Guides; 4. Dealer Price Bulletins; 5. Production Records; 6. Service Bulletins; 7. Summary of Production of Super Stock equipment; 8. Serial Numbers of Production of Super Stock Vehicles; 9. & 10. You've got to buy the books to find out what information is revealed in these last two chapters! Also available are similar books on the same vintage Dodge vehicles.

These books are complete with serial numbers, equipment, dealer and region codes, copies of coding guides, price information, dealer correspondence, press releases and applicable service bulletins. The 1960 and 1961 books include copies of the Ross Roy Data Books also.

The prices are as follows: 1960 Plymouth: \$64.95, 1961 Plymouth: \$44.95, 1962 Plymouth: \$39.95, 1963 Plymouth: \$49.95, 1964 Plymouth: \$44.95 and 1965 Plymouth: \$39.95. Domestic Priority Mail Flat Rate shipping is included in the price of all books. International shipments will be at actual cost.

Payment can be made by PayPal at ddavis8839@aol.com or by personal check. Contact: **Darrell Davis, 100 Tech Drive, Sanford, Florida 32771. (407) 330-9100; (407) 701-4493, cell. ddavis8839@aol.com**

Service Manuals All \$14.95 each FOB (within continental USA) 1936 cover; 1936-42 repair; 1953 Hi Drive exc; 1954 Powerlite Transmission good; 1958 Supp Canada C/Do/DeS exc; 1961 Supplement Plymouth repro; Supplement Valiant good; 1965 Air Conditioning C/D exc; 1968 Eng/ Perf/Eval/Tech D/C good; 1971 Cricket exc; 1972 Body Only C v/good; Cricket (supplement) good; 1975 2 Vol/Chassis-Body C/D good; Supp Trail Duster/Ramcharger good; Supplement Voyager/Compact D v/good; 1976 2 Vol C/D good; Electrical C/D exc; Voyager/Compact D v/good; 1977 Elec C/D rough; Voyager/Compact Do v/good; Voyager/Compact Do good; 1978 Chassis/Body Voyager-Compact Do exc; Electrical C/D exc; Horizon/Omni D v/good; 1979 Colt/Arrow & Challenger/Sapporo D v/good; P/U Trucks Arrow & D-50 D exc; Sportsman/Voyager/Fr Sec. D v/good; 1980 Challenger/Sapporo Do good; Chr/Ply/Do, Chr/Do good; D-50/Arrow P/U Truck Do good; 1981 Omni/Horizon Aries/Reliant Do good; Trail Duster Ramcharger Do good; 1982 Arrow/Ram 50 Do exc; Engine Performance Chr/Do exc; Sapporo/Challenger Do good; 1983 Front Wheel Drive Chr/Do exc; Sapporo/Challenger Do good; 1984 Front Wheel Drive 2vol Chr/Do exc; Rear Wheel Car 2 Vol Do/Chr exc; 1985 Front Wheel, Will ship Media Mail cost. No handling charges. **Andy Weimann, 16 Cottage Rd. Harwinton, CT 06791-1006. 860-485-0300. <weimann@snet.net>**

Owners Manuals 1928 2nd ed 8/28 w/lub chart v/good \$75** 1929 5th ed. 5/29 w/up/draft carb. Exc \$48**1929 6th ed August 1929 good \$48**1933 PD DeLuxe mint \$65**1934 All RePro \$12**1935 PJ 2nd Ed 2/35 w/OSP & ID mint \$58**1935 PJ Early O.M. Lub Chart v/good \$18**1935 PJ 1st ed Jan 1935 fair \$25**1936 P1/P2 1st ed September 1935 good \$28**1936 P1/P2 2nd ed 1st 4 pgs xerox rough \$16**1936 P1/P2 4th ed June 1936 exc \$42**1936 P1/P2 1st ed 9/35 exc \$38**1937 Commercial Car PT 50 mint \$125**1937 Commercial Cars B&W/color 56 pgs Xerox \$28**1938 All exc \$36**1938 All mint \$48**1939 P7-P8 loose cover good \$42**1940 Commercial Car PT105 n/mint \$125**1940 P9&P10 n/mint \$38**1940P9&P10 X-Rox \$9**1941 Commercial Car Xerox \$28**1941 Commercial Car PT 125 exc \$95**1941 P11-P12 exc

\$28**1942 All n/mint \$26**1946 All 1946-47 good \$32**1946 P-15 47-48 RePro \$18**1947 All 46 v/good \$32**1947 P-15 46-48 RePro \$18** 1948 P-15 46-47 RePro \$18**1948 O-15 w/envelope exc \$38**1949 All good \$18**1950 All n/mint \$38**1951 All good \$18**1952 All exc \$22**1952 All mint \$38**1953 All n/mint \$36**1953 All v/good \$22**1954 All w/serv. Policy n/mint \$32**1955 All good \$18**1955 All w/serv.policy n/mint \$32**1956 All exc \$32**1956 All stain \$18**1956 Australian Des/Do/Ply good \$24**1957 All good \$24**1957 All n/mint \$36**1958 All good \$24**1959 All v/good \$18**1960 All except Valiant n/mint \$32**1960 Valiant exc \$24**1961 All except Valiant n/mint \$32**1961 Valiant good \$22**1962 All except Valiant mint \$36**1962 All except Valiant stain \$18**1962 Valiant exc \$24**1963 Plymouth exc \$26**1963 Valiant exc \$24**1964 Plymouth w/O.S.P. exc \$28**1964 Valiant exc \$24**1965 Belvedere exc \$32**1965 Valiant exc \$32**1966 Barracuda w/Club Flyer exc \$42**1966 Belvedere/Satellite n/mint \$32**1966 Fury w/extras exc \$28**1966 Valiant exc \$28**1967 Belvedere mint \$36**1967 Fury mint \$28**1967 Fury poor \$7**1967 Valiant fair \$10**1967 Valiant v/good \$24**1968 Bel/Sat/GTX/Road Runner exc \$38**1968 Fury n/mint \$28**1969 Barracuda exc \$38**1969 Fury exc \$24**1969 Fury poor \$5**1969 Valiant exc \$28**1970 Barracuda exc \$38**1970 Belvedere exc \$38**1970 Fury good \$22**1970 Valiant/Duster n/mint \$22**1971 Duster/Valiant exc \$22**1971 Fury mint \$18**1971 Satellite/Roadrunner/GTX v/good \$26**1971 Satellite/RR/GTX n/mint \$32**1972 Barracuda/Cuda mint \$38**1972 Fury v/good \$15**1972 Satellite & R/R v Good \$26**1972 Satellite & R/R w/envelope mint \$42**1972 Valiant/Duster exc \$24**1973 Pocket Data/Facts/C&T/prices mint \$85**1973 Barracuda mint \$44**1973 Fury exc \$22**1973 Satellite/Road Runner/GTX v/good \$28**1973 Satellite, Roadrunner repair \$22**1973 Valiant-Duster good \$18**1973 Valiant/Duster exc \$22**1973 Fury 2dr HT good \$38**1974 Barracuda/Cuda mint \$42**1974 Duster/Valiant good \$14**1974Duster/Valiant fair \$10**1974 Fury mint \$28**1974 Satellite mint \$38**1974 Satellite stain \$18**1974 Voyager mint \$22. **SPECIAL 10% OFF ALL MANUALS.** Please add \$2 postage for orders under \$15. Orders over \$15 are postpaid in the continental US. **Andy Weimann, 16 Cottage Rd. Harwinton, CT 06791-1006. 860-485-0300. <weimann@snet.net>**

LITERATURE FOR SALE

Ply literature, sales items: Service professional desk pad w/ separate card holder, set of coasters, note pad holder, pen holder w/ gold pen. \$350; Set of Mopar parts book (12) 59-60, 61-62, 63-64, 66-67, 68, 69, 70-71, 72, 73-74, 94-95. \$850; *The Story of an American Car Company—Chrysler* \$40; *Pictorial History of Chrysler Corp, 1924-1968* \$35; *History of Chrysler and American Motors Merger*, very rare \$40; all sales folders, prewar \$20; all sales folders, postwar \$25; factory photo, Ply XX-500, 1954 \$25; *Greatest Show on Earth*, Ply book, very unusual \$60; Chrysler Pentastar cigarette lighter, in box, NOS \$75; 1960 Ply cigarette lighter w/ pic of the Plymouth Bld, very unusual \$100; *Detroit Goes to War* \$60; Auto trivia book, very rare \$60; *Storied Independent Automakers: Hudson, Nash, AMC* \$75; auto company stock certificates, 14 different ones \$15-\$85; Ply Voyager pencil, very unusual, NOS \$25; polishing cloth \$75; Tiffany glass model of space ship *Challenger* dealer award, ex. rare \$850; Chrysler Pentastar glass dealer award \$250; pewter model of the Chrysler Bld w/ book on the bld, award 2003, very rare \$1,000; Ply vanity mirror \$30; polishing cloth 1316-224 \$75; 1970 Ply 'Cuda conv Hemi, red, Franklin Mint \$135; 1967 Ply Petty race car "43" Franklin Mint \$135; 1967 Ply Sat Hemi, black, Franklin Mint \$135; *70 Years of Chrysler* \$100; 1969 Ply service manual \$85; (10) different models, Brooklin, 1/43, \$115, ea; framed silver platter from the 1977 Bob Hope Desert Classic, w/ Pentastar logo, ex rare \$450; matching ceramic ashtray w/ bronze medallion *Chrysler One-millionth Power-*

flite, May 20, 1955 and ceramic cigarette box *Chrysler Corp Torque-flite*, Nov-17-1950 *Kokomo Plant Dedication*, very, very rare and unusual \$1,800; folder on Dodge Brothers dealership signs, very rare, very unusual \$75; framed dealer picture of Walter P. Chrysler, 1938 \$850; Mopar train set, 1993, NOS \$275. All items subject to prior sale; prices plus shipping & handling. **Don Phillips, 1325 Arnoldstown Rd, Jefferson, MD 21755. 301-401-8302.**

LITERATURE WANTED

Wanted: Is there any one (or two) of you who has **Plymouth Canadian literature** that you would swap or sell me? I'm willing to swap/buy your newer items for earlier stuff I have that you might like. **Andy Weimann, 16 Cottage Rd, Harwinton, CT 08791. 860-485-0300. <weimann@snet.net>**

Wanted: *Plymouth Traveler* magazines. I need 1960 Vol I #9, '61 Vol II #1, '64 Vol V #4 and '70 Vol XI #3 & #6 to complete the 13-year run. Will buy or I have a lot of duplicates I would swap five (5) for each one I need. **Andy Weimann, 16 Cottage Rd, Harwinton, CT 08791. 860-485-0300. <weimann@snet.net>**

AUTOMOBILIA

Vintage Travel Decal Replicas! Do you admire the artistic style of the vintage travel decals of the 1950s-60s with their beautifully drawn graphics and rich colors? Would you like to have a modern reproduction for your classic car, family minivan or office window? Our replicas are made with modern window-cling material that can be applied to any clean glass surface with the added capability of being re-useable! These classic reproductions can be removed, moved or transferred from one location to another. Don't

destroy an original collector's item decal by trying to soak and apply it to your window. Keep in mind that many are over 60 years old and may have deteriorated to the point that they will simply dissolve. Use these replicas instead! Our replicas are reverse-printed so that they are to be applied to the inside of the window glass just like the original decals. We took the extra step of doing this so that the cling is protected from damage, accidental dislodgement and unauthorized removal. **<http://stores.ebay.com/vintage-traveldecalreplicas> (Joe Romey)**

1950 & 1953 Lionel train Ply billboards, complete with green frames (not matching) \$9.95 each. free shipping in continental U.S. **Andy Weimann, 16 Cottage Rd. Harwinton, CT 06791-1006. 860-485-0300. <weimann@snet.net>**

Matchcovers (NO matches), eight different, only \$10 postpaid. Also have most other brands. **Andy Weimann, 16 Cottage Rd. Harwinton, CT 06791-1006. 860-485-0300. <weimann@snet.net>**

CLUB / REGION ITEMS

2014 National Fall Meet: golf shirts, T-shirts, hats, dash plaques. See previous *BULLETINS* 328, p54 / 329, p29 / 330, p41 / 331, p47 for listings. **Dennis Oleksiak, 2429 Mayor, St. Clair, MI 48079. 810-329-3679. Thank you from the Detroit Region**

2007 National Fall Meet: commemorative neck ties displaying the national club logo and logo of the Carolina Region, in Plymouth



Blue. Only 200 were made; be one of 200 to own one of these ties. \$20 ppd. Contact: **Thomas E. Carroll, 181 Charles St, Forest City, NC 28043. uncuncc26@aol.com**

Shirts: lightly used Delaware Valley Region National Meet (no year) 1-L/42-44 & 1-M/38-40; 1990 DVR National Meet 1-L \$14 ea. Used 1989 Colonial Region National Meet 1-L \$10. All ppd, continental US only. **Andy Weimann, 16 Cottage Rd. Harwinton, CT 06791-1006. 860-485-0300. [<weimann@snet.net>](mailto:weimann@snet.net)**

EVENTS

July 24-28, 2018, Northville, MI: 2018 Grand National Meet celebrating the 90th anniversary of Plymouth, a judging meet hosted by the Detroit Region. Contact: **Russ Nardi, 586-566-5838 [<rpnardi@hotmail.com>](mailto:rpnardi@hotmail.com)**

ANNOUNCEMENTS

The Chrysler Group LLC Preferred 'Friends' Program (PP) offers Plymouth Owner's Club members the opportunity to purchase a new Chrysler, Dodge, Jeep®, Ram or Fiat vehicle at a special discount price. This 'Preferred Program' price is 1% maximum below Factory Invoice plus a \$75 administration fee, which could be up to 11% below the Manufacturers Suggested Retail Price (MSRP). Most Chrysler Group vehicles are available at this special discount price, including all Chrysler, Jeep, Dodge (including Charger and Challenger SRT models), Ram and FIAT vehicles. Ineligible models include the 200 LX, 500e, Grand Cherokee SRT and Pacifica Hybrid (applicable at the time this ad was written).

This special discount price is only available on the Factory Invoice. Ask your sales person. You have the right to see the factory invoice and verify the 'PP' price ('PP' will be printed on the invoice). In addition to this special price, any rebates or special offers which you are qualified for at the time of your purchase are deducted from the Preferred Price. To check on the latest incentives for your area, check the applicable Chrysler, Dodge, Jeep®, Ram or Fiat web site, or call 800-227-0757. Please note that these dealers are independently owned and operated, and therefore do not have to provide the discount to you or sell you a specific vehicle. If this happens, try a different dealer.

After visiting your dealer to discuss this special discount program, call POC member **Ron Kline at 248-841-6534** to obtain a Control Number to provide to your sales person to complete the sale. Please note this offer is not available for Canadian members (sorry!).

When planning your club tours for the upcoming season, you should consider the Endless Mountains region of Pennsylvania—miles of scenic country roads with no traffic lights, billboards, strip malls or congestion. Visit our state parks, covered bridges and friendly villages and, by all means, bring a camera.

Since 1997, **Morgan Century Farm B&B** in Lincoln Falls, PA, has been hosting car clubs and antique car owners. We offer five clean, comfortable rooms with private baths and a full down-home country breakfast.


Directly across the road is the Mariah Rogers Guest House with a fully equipped kitchen, antique furnishings and two full baths.

We are minutes away from World's End State Park, Richetts Glen State Park and the Victorian village of Eagles Mere. Nearby is the "Grand Canyon of Pa" in Wellsboro and the Little League World Series in Williamsport.

Two major antique centers are just a 45-minute ride away and within two hours other attractions include Steamtown USA, Woolrich factory outlet, Watkins Glen and the Corning Glass Museum.

So, give us a call at **570-924-4909** and we'll send a brochure or

check us out at **[<morgancenturyfarm.com>](http://morgancenturyfarm.com)** We speak Plymouth and own Plymouths. **Morgan Century Farm B&B, 7043 Rte 154, Lincoln Falls, PA 18616.**



**48 Years
of the
PLYMOUTH BULLETIN**

Order your DVD set at **\$39.95** each, plus **\$1.50** postage USA orders; **\$2.00** postage Canada orders; **\$3.00** postage Overseas orders. Pay by check or VISA, Mastercard or Discover (give credit card number and expiration date).


Plymouth Owners Club, Inc.
Box 416
Cavalier, ND 58220-3746
benji@utma.com



Monthly Magazine Dues: \$35 US \$40 Foreign
WPC CLUB INC. • P.O. Box 3504 • Kalamazoo, MI 49003
www.chryslerclub.org

Reciprocal ad with the WPC

Buy your next fleet car for George Brooks.



George Brooks (president of Football Sales, Inc.) needs a strong, good-natured traveling companion like you need economical, good-looking fleet cars. And he's got it. A '65 ex-fleet Plymouth which serves as an extra car.

It's a great car, used, which suggests that Plymouth is an even better buy new. A '67 Plymouth Fury, for instance, with features to win over the most pernickety salesman.


Like that Sport Fury below. Check the accent paint striping along the fender line. The turn indicators on top. Strictly custom—but standard.

Same story inside. Special 3-spoke wheel. Buckets that sigh when you settle into them; and between them, your choice of sporty console or unique armrest/seat cushion unit—all with our compliments.

Naturally you can tool up a Sport Fury as you please. Even to our Super Commando 440 V-6—biggest engine option in Fury's price class.

A whole new Fury story—25 models strong—is waiting at your Plymouth Dealer's. Unfold it. You'll find all that makes a fleet Plymouth a good used car for George Brooks also makes a new Plymouth a great buy for your fleet. Every '67 model is priced right—priced to win you over.

What's George Brooks got to do with fleet cars? If it's a Plymouth, it could be his next traveling companion. And George really gets around. Sits, travels, in an A-number-one sports fan. So as an extra family car, George owns a '65 ex-fleet Plymouth. A second-hand gem because it's still first rate.



97 Sport Fury Fast Top

Plymouth
CHRYSLER GROUP LLC

20 FORTUNE April 1987

MICHAEL OWENS COLLECTION